

CSO LTCP Project Fact Sheet



LTCP Project Number: L_OR_MF_172_S_09B_B_A_0

Project Name: Adams Street Storage Basin

Project Type: Off-Line Storage

Receiving Stream: Ohio River

Project Description: This project includes a 0.12 MG underground covered concrete basin for CSO172 to reduce overflows to 0 overflows per year. The basin is located near River Road/CSX RR. The facility will be a pump out operation.

Design Parameters / Assumptions: Basins are designed to the 1st overflow event volume, resulting in 0 CSO overflows/year. The 1st peak flowrate is evaluated to compare gravity vs. pumped conveyance. Design for pump-back is 24 hours. Type of basin based on hydraulics and surroundings.

Surrounding Area Land Use: The project is located between River Rd. and I-64. CSO172 is located to the East of the project. The project is located within 'Parks, Cemeteries, etc.'

Apparent Utilities Description: Sewer Line approx. 2 ft. from proposed basin.

Capital Projects: No capital projects identified within the project area

Advanced Site Restoration: N/A

Estimated Capital Cost (2008): \$983,000

Capital Cost / Gallon Overflow Removed: \$1.11

Weighted Benefit / Cost Ratio (Capital Cost): 96.02

Overflow Points Addressed:

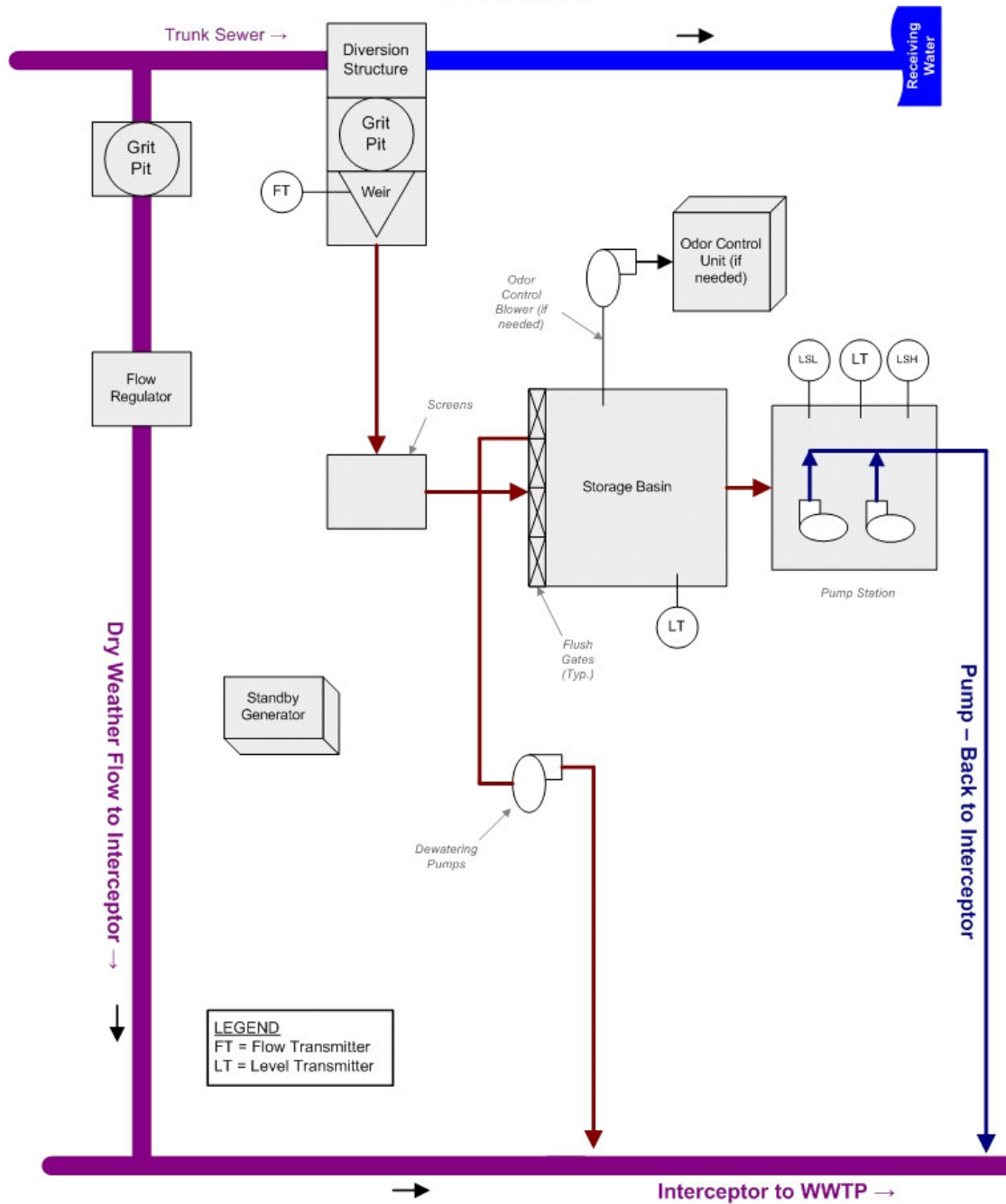
<u>CSO Number</u>	<u>CSO Name</u>	<u>CSO Area (Acres)</u>	<u>2008 AAOV (MG / Yr)</u>	<u># of Overflows / Yr</u>	<u>Post LTCP AAOV (MG/Yr)</u>	<u>Post LTCP # Overflows / Year</u>
CSO172	Adams Street	13.67	1.28	31	0	0

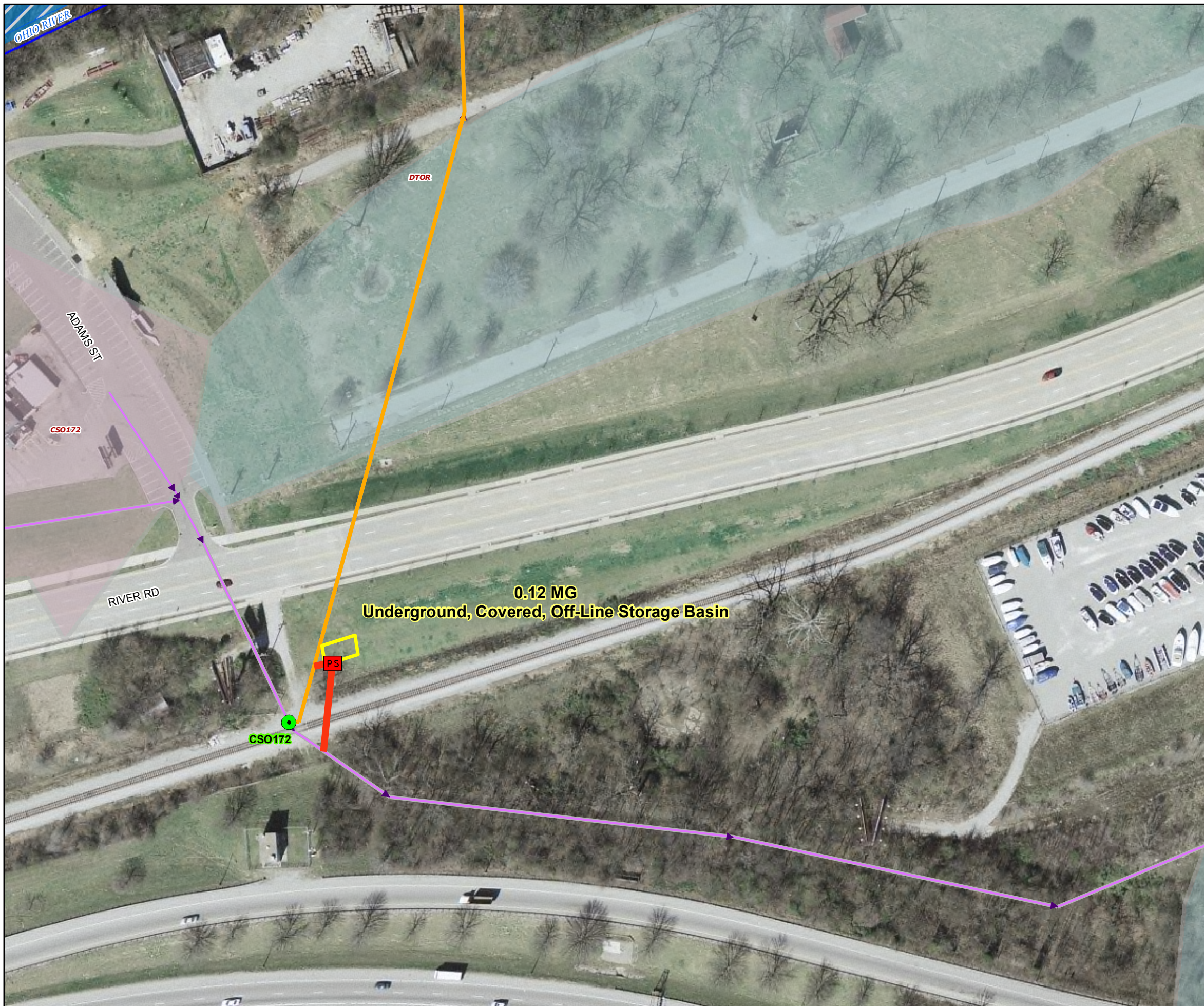
NOTE: CSO hydraulic statistics are predicted based on InfoWorks model results.

CSO LTCP Project Fact Sheet

LTCP Project Number: L_OR_MF_172_S_09B_B_A_0

Off-Line Storage
Pumped Effluent
Flow Diagram





Integrated Overflow Abatement Plan
Vol. 2 - Final CSO Long Term Control Plan
 Ohio River
 SolutionID # L_OR_MF_172_S_09B_B_A_0
 Adams Street Storage Basin

Preliminary - For Budget Development Only
Legend

- PS Proposed Pump Station Solution
- Active CSO
- Eliminated CSO
- PS Pump Station
- Proposed Pipe Solution
- Force Main
- Collector < 12"
- Interceptor => 12"
- Combined Sewer Pipe
- ~ Streams
- Proposed Storage Solution
- Floodway
- Metro Parks
- County Boundary

General representation of overflow abatement solutions are for preliminary planning purposes. Alignments and locations may be altered during design.

1 inch equals 100 feet
 Scalable when printed on 11" X 17" paper

Some boundaries are uniquely symbolized within the map.
 Map Revision
 December 3, 2008
 Aerial Date: 2006

Copyright © 2008 LOUISVILLE AND JEFFERSON COUNTY METROPOLITAN SEWER DISTRICT (MSD), LOUISVILLE WATER COMPANY, LOUISVILLE METRO GOVERNMENT, and JEFFERSON COUNTY PROPERTY VALUATION ADMINISTRATOR (PVA). All Rights Reserved.