



## SSO SSDP Project Fact Sheet



---

<b><u>SSO Project Number:</u></b>	S_OR_MF_NB04_M_03_B_B
<b><u>Project Name:</u></b>	Prospect # 1 - WQTC Eliminations
<b><u>Modeled Area:</u></b>	ORFM
<b><u>Branch or SSO ID:</u></b>	NB04
<b><u>Project Type:</u></b>	Pipe Upgrades, Diversion, WQTC Eliminations
<b><u>Receiving Stream:</u></b>	Goose Creek, Little Goose Creek, Harrods Creek, Muddy Fork Beargrass Creek, and Ohio River

---

<b><u>Project Description:</u></b>	Construct new Harrods Creek Interceptor, including 15,000 LF of 24-42" sewer pipe and 3,400 LF of 6" force main to eliminate five Prospect WQTCs; also includes construction of two new pump stations. Eliminate Deep Creek PS by constructing 130 LF of 8" sewer pipe to the new Harrods Creek Interceptor. Elimination of the WQTCs by 2015 is a requirement of the Amended Consent Decree.
------------------------------------	---

<b><u>Reason for Overflow:</u></b>	ORFM and pump station capacity, WQTC capacity
------------------------------------	---

<b><u>Design Parameters / Assumptions:</u></b>	This solution is based on a 2.25 inch cloudburst rain event
--	---

<b><u>Project Constraints:</u></b>	None
------------------------------------	------

<b><u>Capital Projects:</u></b>	Barbour Lane, Hillsdale, Glenview Hills & New Market Pump Station Expansions - Awaiting Bidding; Harrods Creek PS
---------------------------------	---

---

<b><u>Estimated Capital Cost (2008 dollars):</u></b>	\$17,247,000
--	--------------

<b><u>Weighted Benefit/Cost Ratio (Present Worth):</u></b>	1.69
--	------

---

**Overflow Points Addressed:**

<b><u>SSO</u></b>	<b><u>SSO Name</u></b>	<b><u>Service Area</u></b>	<b><u>Overflow Type</u></b>	<b><u>Discharge To</u></b>	<b><u>Average Overflow / Incident (gallons)</u></b>
22436	Manhole Adjacent to West Goose Creek PS	Morris Forman	Pumped	Ditch	30,275
40870	Muddy Fork PS #1	Morris Forman	Manhole	Ditch	41,800
40871	Muddy Fork PS #2	Morris Forman	Manhole	Ditch	150,067
40872	Muddy Fork PS #3	Morris Forman	Manhole	Ground	183,400
42680	Barbour Lane #1	Morris Forman	Pumped	Stream	162,000
65633	Barbour Lane #2	Morris Forman	Manhole	Stream	102,125
65635	Barbour Lane #3	Morris Forman	Manhole	Stream	25,500
MSD0292	Hunting Creek South WWTP	Hunting Creek South	Treatment Plant	Stream	117,436
MSD0123-PS	West Goose Creek	Morris Forman	Lift Station	Ditch	36,750
MSD0183-PS	Glenview Hills	Morris Forman	Lift Station	Ditch	73,733
MSD0192-PS	Barbour Lane	Morris Forman	Lift Station	Stream	38,581
MSD0193-PS	New Market	Morris Forman	Lift Station	Stream	16,333
MSD1044-PS	Phoenix Hill	Morris Forman	Pumped	Ground	2,252
MSD1063-PS	Deep Creek PS	Hunting Creek South	Lift Station	Ditch	15,623



**Integrated Overflow Abatement Plan**  
**Vol. 3 - Sanitary Sewer Discharge Plan**  
**Ohio River Force Main Sewershed**  
**Solution ID # S\_OR\_MF\_NB04\_M\_03\_B\_B**  
**Prospect #1 - WQTC Eliminations**

**Preliminary - For Budget Development Only**

**Legend**

- Documented SSO
- Suspected SSO
- Haul Operation
- Proposed Pump Station Solution
- Pump Station
- WWTP
- Proposed Pipe Solution
- Force Main
- Collector < 12"
- Interceptor => 12"
- Combined Sewer Pipe
- Proposed Off-line Storage
- Road
- Streams
- Floodway
- Small WWTP Service Area
- Large WWTP Service Area
- CSO Area
- Metro Parks

General representation of overflow abatement solutions are for preliminary planning purposes. Alignments and locations may be altered during design.

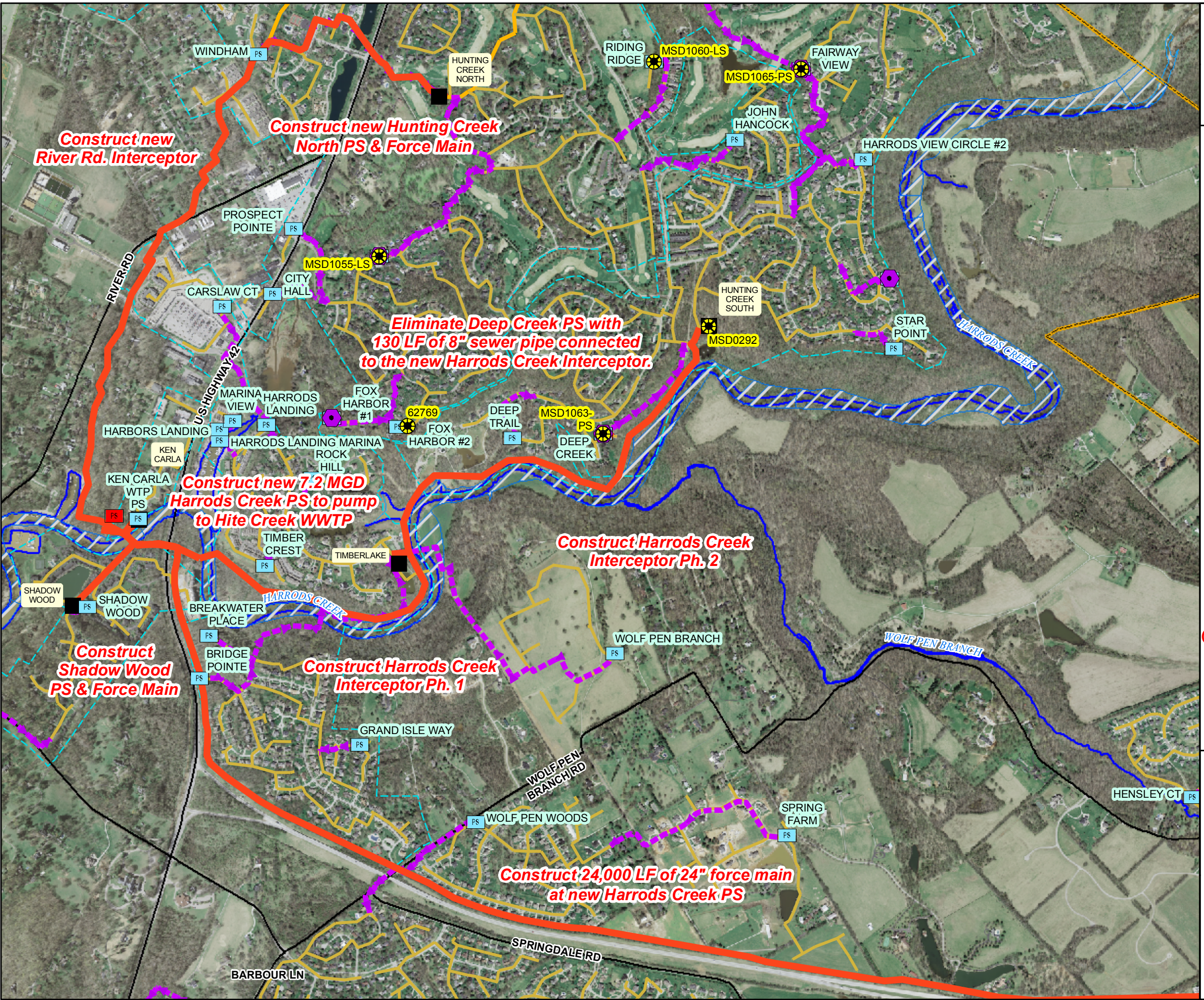
1 inch equals 1,200 feet  
Scalable when printed on 11" X 17" paper



Some boundaries are uniquely symbolized within the map.  
Map Revision  
May 7, 2009  
Aerial Date: 2006



Copyright © 2008 LOUISVILLE AND JEFFERSON COUNTY METROPOLITAN SEWER DISTRICT (MSD), LOUISVILLE WATER COMPANY, LOUISVILLE METRO GOVERNMENT, and JEFFERSON COUNTY PROPERTY VALUATION ADMINISTRATOR (PVA). All Rights Reserved.







## SSO SSDP Project Fact Sheet



---

<b><u>SSO Project Number:</u></b>	S_OR_MF_NB04_M_03_B_B
<b><u>Project Name:</u></b>	Prospect # 2 - Harrods Creek PS
<b><u>Modeled Area:</u></b>	ORFM
<b><u>Branch or SSO ID:</u></b>	NB04
<b><u>Project Type:</u></b>	Pump Station & Pipe Upgrades
<b><u>Receiving Stream:</u></b>	Goose Creek, Little Goose Creek, Harrods Creek, Muddy Fork Beargrass Creek, and Ohio River

---

<b><u>Project Description:</u></b>	Construct new 7.2 MGD Harrods Creek PS and 24,000 LF of 24" force main to pump flow to Hite Creek WQTC.
<b><u>Reason for Overflow:</u></b>	ORFM and pump station capacity, WQTC capacity
<b><u>Design Parameters / Assumptions:</u></b>	This solution is based on a 2.25 inch cloudburst rain event
<b><u>Project Constraints:</u></b>	None
<b><u>Capital Projects:</u></b>	Barbour Lane, Hillsdale, Glenview Hills & New Market Pump Station Expansions - Awaiting Bidding; Harrods Creek PS

---

<b><u>Estimated Capital Cost (2008 dollars):</u></b>	\$9,621,000
<b><u>Weighted Benefit/Cost Ratio (Present Worth):</u></b>	1.69

---



**Overflow Points Addressed:**

<b><u>SSO</u></b>	<b><u>SSO Name</u></b>	<b><u>Service Area</u></b>	<b><u>Overflow Type</u></b>	<b><u>Discharge To</u></b>	<b><u>Average Overflow / Incident (gallons)</u></b>
22436	Manhole Adjacent to West Goose Creek PS	Morris Forman	Pumped	Ditch	30,275
40870	Muddy Fork PS #1	Morris Forman	Manhole	Ditch	41,800
40871	Muddy Fork PS #2	Morris Forman	Manhole	Ditch	150,067
40872	Muddy Fork PS #3	Morris Forman	Manhole	Ground	183,400
42680	Barbour Lane #1	Morris Forman	Pumped	Stream	162,000
65633	Barbour Lane #2	Morris Forman	Manhole	Stream	102,125
65635	Barbour Lane #3	Morris Forman	Manhole	Stream	25,500
MSD0292	Hunting Creek South WWTP	Hunting Creek South	Treatment Plant	Stream	117,436
MSD0123-PS	West Goose Creek	Morris Forman	Lift Station	Ditch	36,750
MSD0183-PS	Glenview Hills	Morris Forman	Lift Station	Ditch	73,733
MSD0192-PS	Barbour Lane	Morris Forman	Lift Station	Stream	38,581
MSD0193-PS	New Market	Morris Forman	Lift Station	Stream	16,333
MSD1044-PS	Phoenix Hill	Morris Forman	Pumped	Ground	2,252
MSD1063-PS	Deep Creek PS	Hunting Creek South	Lift Station	Ditch	15,623



**Integrated Overflow Abatement Plan**  
**Vol. 3 - Sanitary Sewer Discharge Plan**  
**Ohio River Force Main Sewershed**  
**Solution ID # S\_OR\_MF\_NB04\_M\_03\_B\_B**  
**Prospect #2 - Harrods Creek PS**

**Preliminary - For Budget Development Only**

**Legend**

- Documented SSO
- Suspected SSO
- Haul Operation
- Proposed Pump Station Solution
- Pump Station
- WWTP
- Proposed Pipe Solution
- Force Main
- Collector < 12"
- Interceptor => 12"
- Combined Sewer Pipe
- Proposed Off-line Storage
- Road
- Streams
- Floodway
- Small WWTP Service Area
- Large WWTP Service Area
- CSO Area
- Metro Parks

General representation of overflow abatement solutions are for preliminary planning purposes. Alignments and locations may be altered during design.

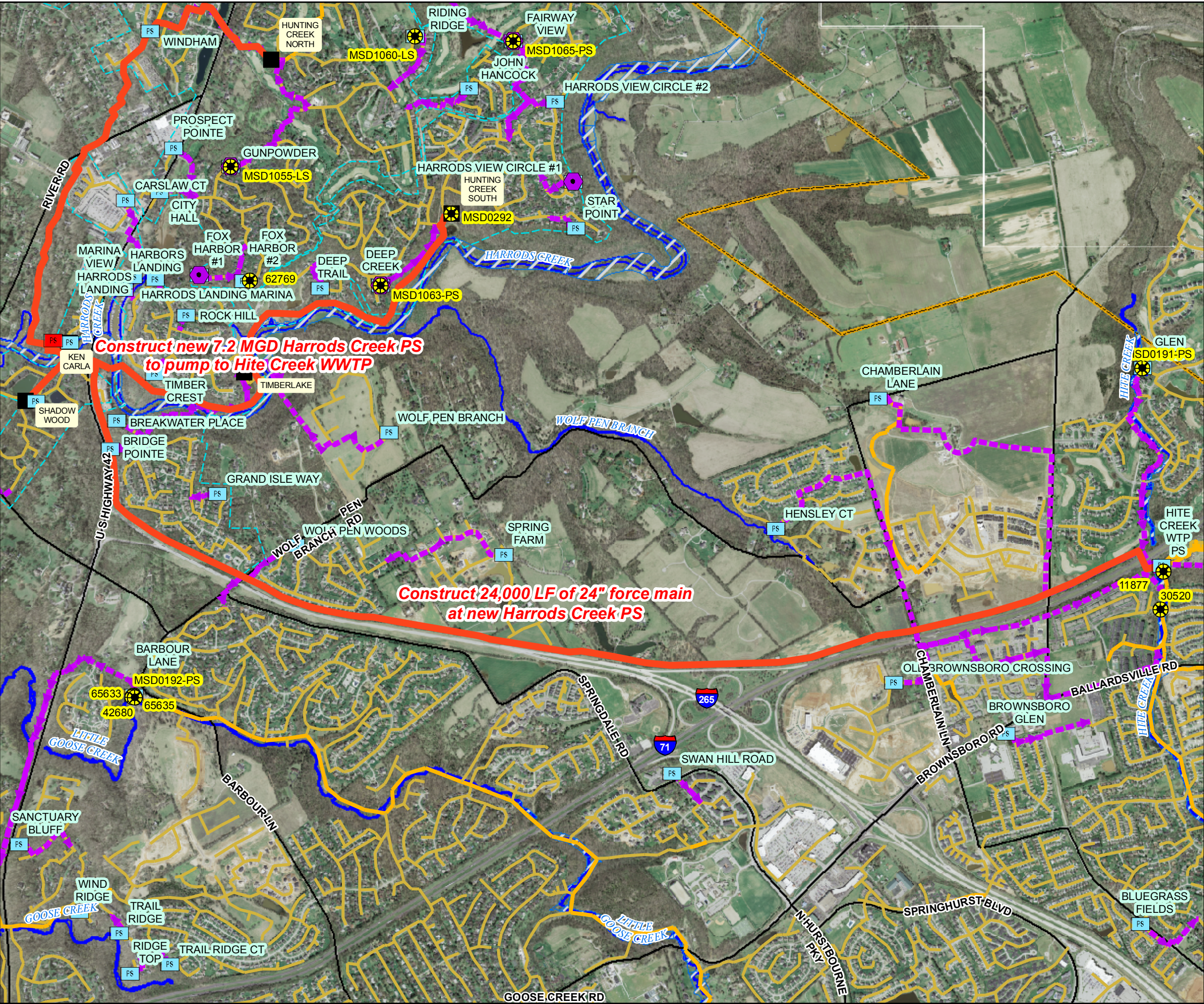
1 inch = 1,800 feet  
Scalable when printed on 11" X 17" paper



Some boundaries are uniquely symbolized within the map.  
Map Revision  
May 7, 2009  
Aerial Date: 2006



Copyright © 2008 LOUISVILLE AND JEFFERSON COUNTY METROPOLITAN SEWER DISTRICT (MSD), LOUISVILLE WATER COMPANY, LOUISVILLE METRO GOVERNMENT, and JEFFERSON COUNTY PROPERTY VALUATION ADMINISTRATOR (PVA). All Rights Reserved.







## SSO SSDP Project Fact Sheet



---

<b><u>SSO Project Number:</u></b>	S_OR_MF_NB04_M_03_B_B
<b><u>Project Name:</u></b>	Prospect # 3 - ORFM System Improvements
<b><u>Modeled Area:</u></b>	ORFM
<b><u>Branch or SSO ID:</u></b>	NB04
<b><u>Project Type:</u></b>	Pump Station & Pipe Upgrades
<b><u>Receiving Stream:</u></b>	Goose Creek, Little Goose Creek, Harrods Creek, Muddy Fork Beargrass Creek, and Ohio River

---

<b><u>Project Description:</u></b>	Upsize 8,300 LF of interceptor upstream of Muddy Fork PS to 27". Upgrade pumps at Muddy Fork, Winding Falls/Phoenix Hill PS and New Market PS. Upsize force main from Muddy Fork PS to 24".
------------------------------------	---

<b><u>Reason for Overflow:</u></b>	ORFM and pump station capacity
------------------------------------	--------------------------------

<b><u>Design Parameters / Assumptions:</u></b>	This solution is based on a 2.25 inch cloudburst rain event
--	---

<b><u>Project Constraints:</u></b>	None
------------------------------------	------

<b><u>Capital Projects:</u></b>	Barbour Lane, Hillsdale, Glenview Hills & New Market Pump Station Expansions - Awaiting Bidding; Harrods Creek PS
---------------------------------	---

---

<b><u>Estimated Capital Cost (2008 dollars):</u></b>	\$7,194,000
--	-------------

<b><u>Weighted Benefit/Cost Ratio (Present Worth):</u></b>	1.69
--	------

---



**Overflow Points Addressed:**

<b><u>SSO</u></b>	<b><u>SSO Name</u></b>	<b><u>Service Area</u></b>	<b><u>Overflow Type</u></b>	<b><u>Discharge To</u></b>	<b><u>Average Overflow / Incident (gallons)</u></b>
22436	Manhole Adjacent to West Goose Creek PS	Morris Forman	Pumped	Ditch	30,275
40870	Muddy Fork PS #1	Morris Forman	Manhole	Ditch	41,800
40871	Muddy Fork PS #2	Morris Forman	Manhole	Ditch	150,067
40872	Muddy Fork PS #3	Morris Forman	Manhole	Ground	183,400
42680	Barbour Lane #1	Morris Forman	Pumped	Stream	162,000
65633	Barbour Lane #2	Morris Forman	Manhole	Stream	102,125
65635	Barbour Lane #3	Morris Forman	Manhole	Stream	25,500
MSD0292	Hunting Creek South WWTP	Hunting Creek South	Treatment Plant	Stream	117,436
MSD0123-PS	West Goose Creek	Morris Forman	Lift Station	Ditch	36,750
MSD0183-PS	Glenview Hills	Morris Forman	Lift Station	Ditch	73,733
MSD0192-PS	Barbour Lane	Morris Forman	Lift Station	Stream	38,581
MSD0193-PS	New Market	Morris Forman	Lift Station	Stream	16,333
MSD1044-PS	Phoenix Hill	Morris Forman	Pumped	Ground	2,252
MSD1063-PS	Deep Creek PS	Hunting Creek South	Lift Station	Ditch	15,623



**Integrated Overflow Abatement Plan**  
**Vol. 3 - Sanitary Sewer Discharge Plan**  
**Ohio River Force Main Sewershed**  
**Solution ID # S\_OR\_MF\_NB04\_M\_03\_B\_B**  
**Prospect #3 - ORFM System Improvements**

**Preliminary - For Budget Development Only**

**Legend**

- Documented SSO
- Suspected SSO
- Haul Operation
- Proposed Pump Station Solution
- Pump Station
- WWTP
- Proposed Pipe Solution
- Force Main
- Collector < 12"
- Interceptor => 12"
- Combined Sewer Pipe
- Proposed Off-line Storage
- Road
- Streams
- Floodway
- Small WWTP Service Area
- Large WWTP Service Area
- CSO Area
- Metro Parks

General representation of overflow abatement solutions are for preliminary planning purposes. Alignments and locations may be altered during design.

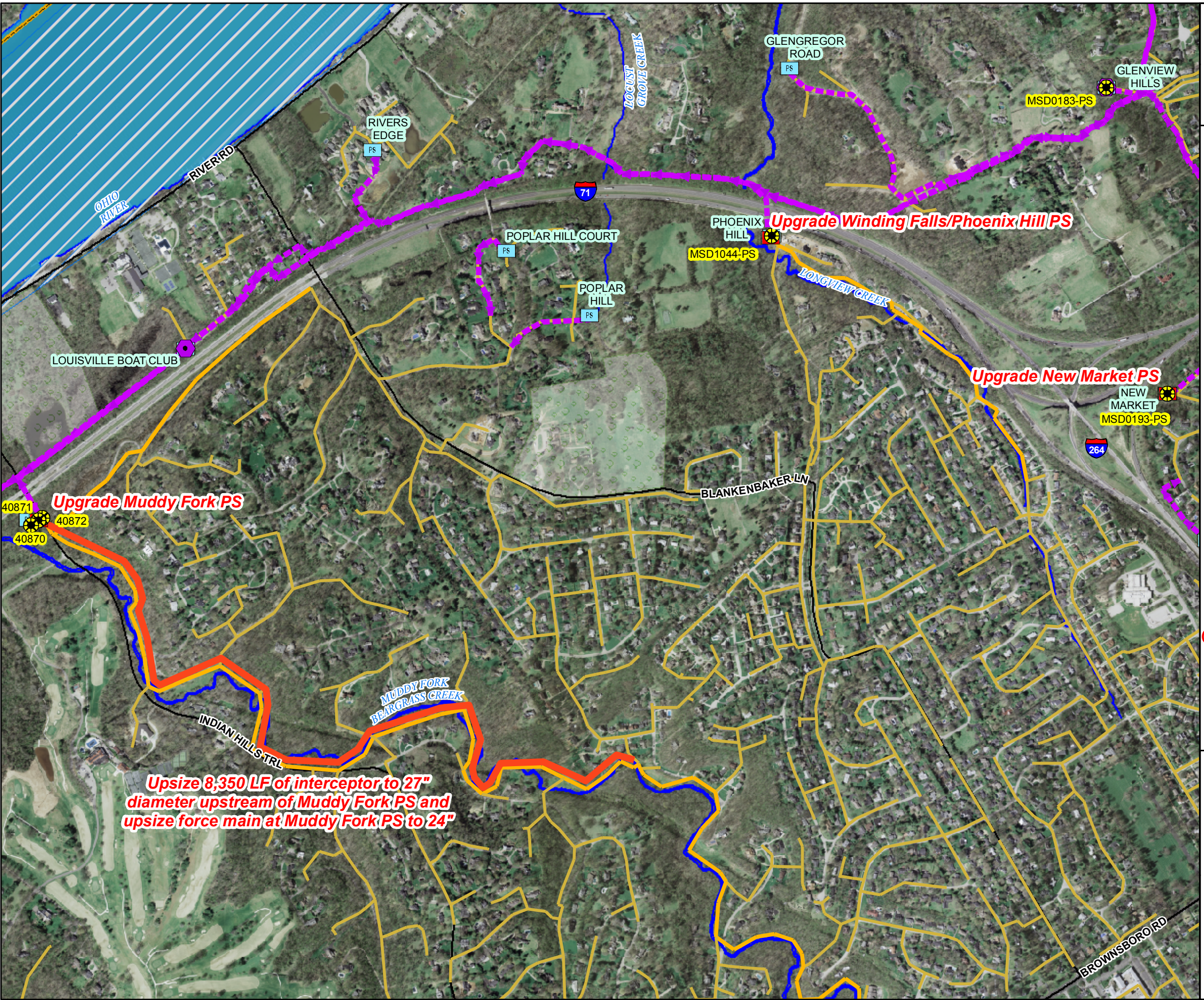
1 inch equals 900 feet  
Scalable when printed on 11" X 17" paper



Some boundaries are uniquely symbolized within the map.  
Map Revision  
May 7, 2009  
Aerial Date: 2006



Copyright © 2008 LOUISVILLE AND JEFFERSON COUNTY METROPOLITAN SEWER DISTRICT (MSD), LOUISVILLE WATER COMPANY, LOUISVILLE METRO GOVERNMENT, and JEFFERSON COUNTY PROPERTY VALUATION ADMINISTRATOR (PVA). All Rights Reserved.



**Upsize 8,350 LF of interceptor to 27" diameter upstream of Muddy Fork PS and upsize force main at Muddy Fork PS to 24"**

**Upgrade Winding Falls/Phoenix Hill PS**

**Upgrade New Market PS**

**Upgrade Muddy Fork PS**