



SSO SSDP Project Fact Sheet



SSO Project Number: S_JT_JT_NB01_M_01_C_A

Project Name: Jeffersontown WQTC Elimination

Modeled Area: Jeffersontown

Branch or SSO ID: NB01

Project Type: Off-line Storage & Pipe Upgrades, WQTC Elimination

Receiving Stream: Chenoweth Run

Project Description: Upsize the interceptor (6,200 LF) from Grassland to the WQTC. Offline storage facility (5.7 MG) at the WQTC site and a new PS with capacity of 10 MGD. 32,100 LF of 24" force main constructed to convey flows to the Hikes Lane Interceptor (HLI).

Reason for Overflow: System capacity, siphon, and WQTC

Design Parameters / Assumptions: This solution is based on a 1.82 inch cloudburst rain event

Project Constraints: None at this time

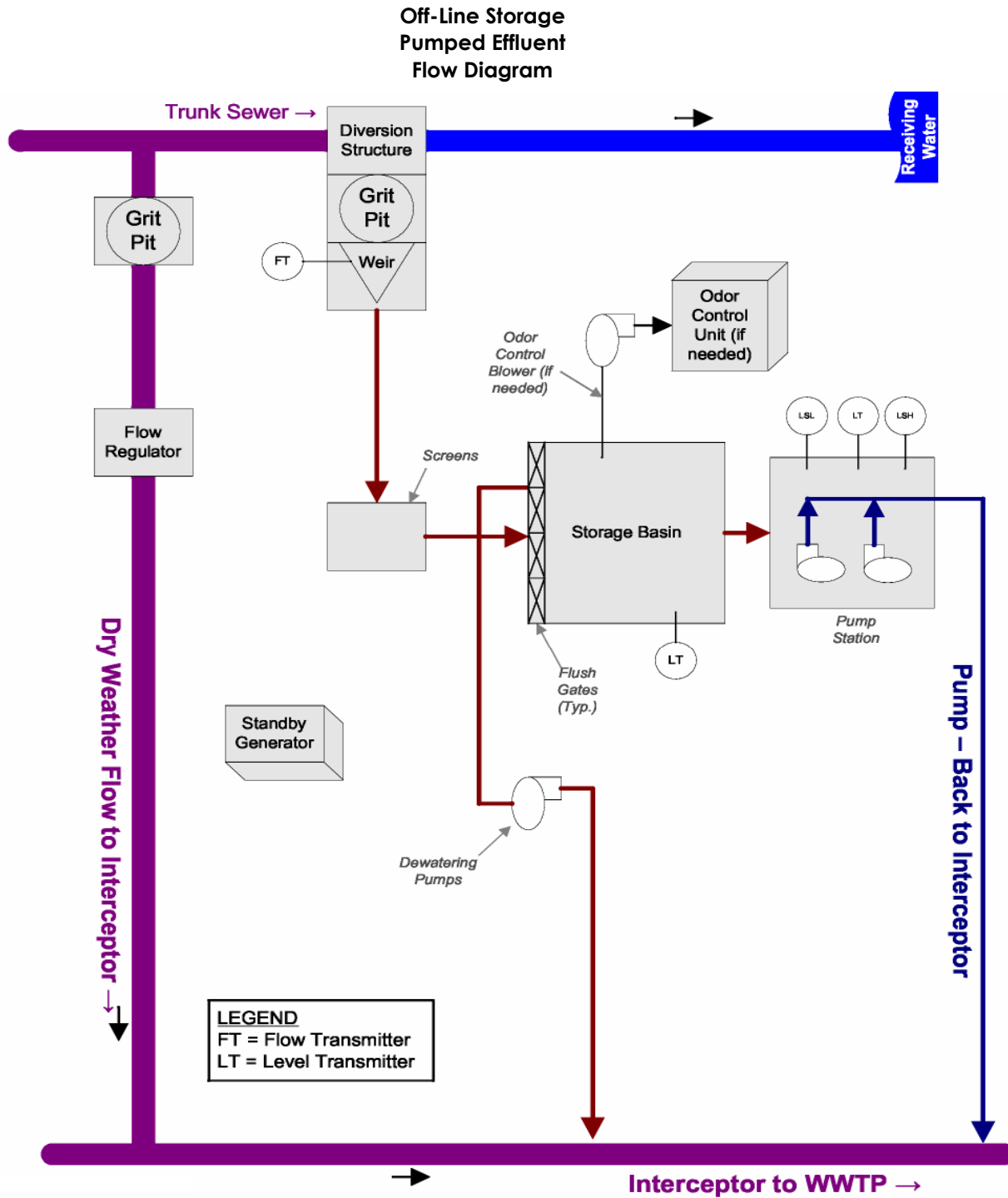
Estimated Capital Cost (2008 dollars): \$23,737,000

Weighted Benefit/Cost Ratio (Present Worth): 5.23

Overflow Points Addressed:

SSO	SSO Name	Service Area	Overflow Type	Discharge To	Average Overflow / Incident (gallons)
28173	Watterson Trail	Jeffersontown	Manhole	Ground	46,028
28390	10025 Grassland Road	Jeffersontown	Manhole	Stream	MOP-no data
28391	Grassland #3	Jeffersontown	Manhole	Stream	387,000
28392	Grassland #2	Jeffersontown	Manhole	Stream	2,160,000
28395	Grassland #1	Jeffersontown	Manhole	Stream	251,378

31733	10001 Grassland Road	Jeffersontown	Manhole	Stream	Suspected-no data
64505	3200 Ruckreigel Pky	Jeffersontown	Manhole	Stream	Suspected-no data
ISO28-SI	Jeffersontown WQTC Siphon	Jeffersontown	Constructed	Stream	113,000
MSD0255	Jeffersontown WQTC	Jeffersontown	Treatment Plant	Stream	1,800,658



Preliminary - For Budget Development Only

Legend

- Documented SSO
- Suspected SSO
- Haul Operation
- Proposed Pump Station Solution
- Pump Station
- WWTP
- Proposed Pipe Solution
- Force Main
- Collector < 12"
- Interceptor => 12"
- Combined Sewer Pipe
- Proposed Off-line Storage
- Road
- Streams
- Floodway
- Small WWTP Service Area
- Large WWTP Service Area
- CSO Area
- Metro Parks

General representation of overflow abatement solutions are for preliminary planning purposes. Alignments and locations may be altered during design.

1 inch = 1,500 feet
 Scalable when printed on 11" X 17" paper

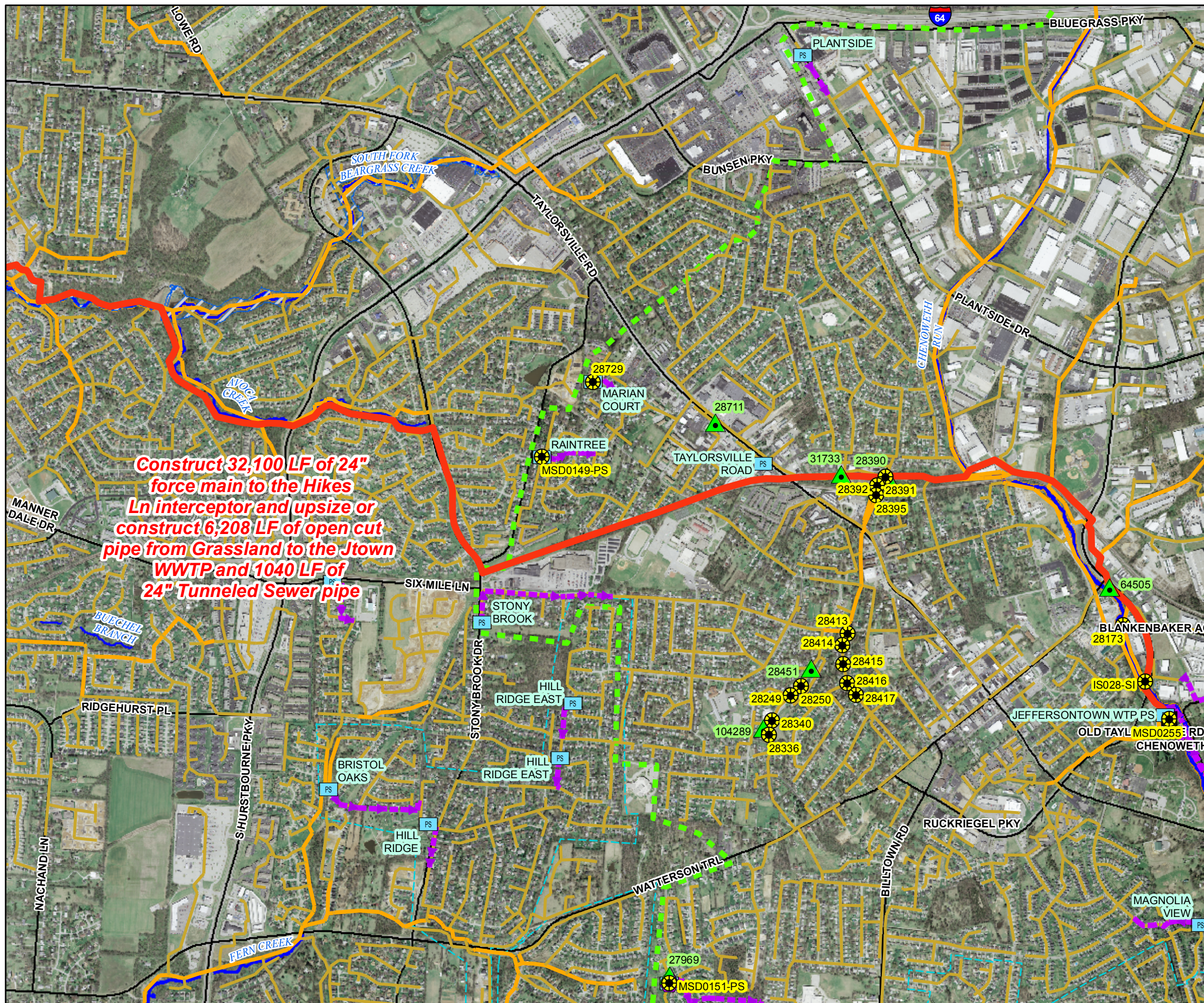
Some boundaries are uniquely symbolized within the map.

Map Revision
 May 07, 2009

Aerial Date: 2006



Copyright © 2008 LOUISVILLE AND JEFFERSON COUNTY METROPOLITAN SEWER DISTRICT (MSD), LOUISVILLE WATER COMPANY, LOUISVILLE METRO GOVERNMENT, and JEFFERSON COUNTY PROPERTY VALUATION ADMINISTRATOR (PVA). All Rights Reserved.



Integrated Overflow Abatement Plan
Vol. 3 - Sanitary Sewer Discharge Plan
Jeffersontown Sewershed
Solution ID # S_JT_JT_NB01_M_01_C_A
Jeffersontown WQTC Elimination
Southeast - Page 2 of 2

Preliminary - For Budget Development Only

Legend

- Documented SSO
- Suspected SSO
- Haul Operation
- Proposed Pump Station Solution
- Pump Station
- WWTP
- Proposed Pipe Solution
- Force Main
- Collector < 12"
- Interceptor => 12"
- Combined Sewer Pipe
- Proposed Off-line Storage
- Road
- Streams
- Floodway
- Small WWTP Service Area
- Large WWTP Service Area
- CSO Area
- Metro Parks

General representation of overflow abatement solutions are for preliminary planning purposes. Alignments and locations may be altered during design.

1 inch = 100 feet
 Scalable when printed on 11" X 17" paper



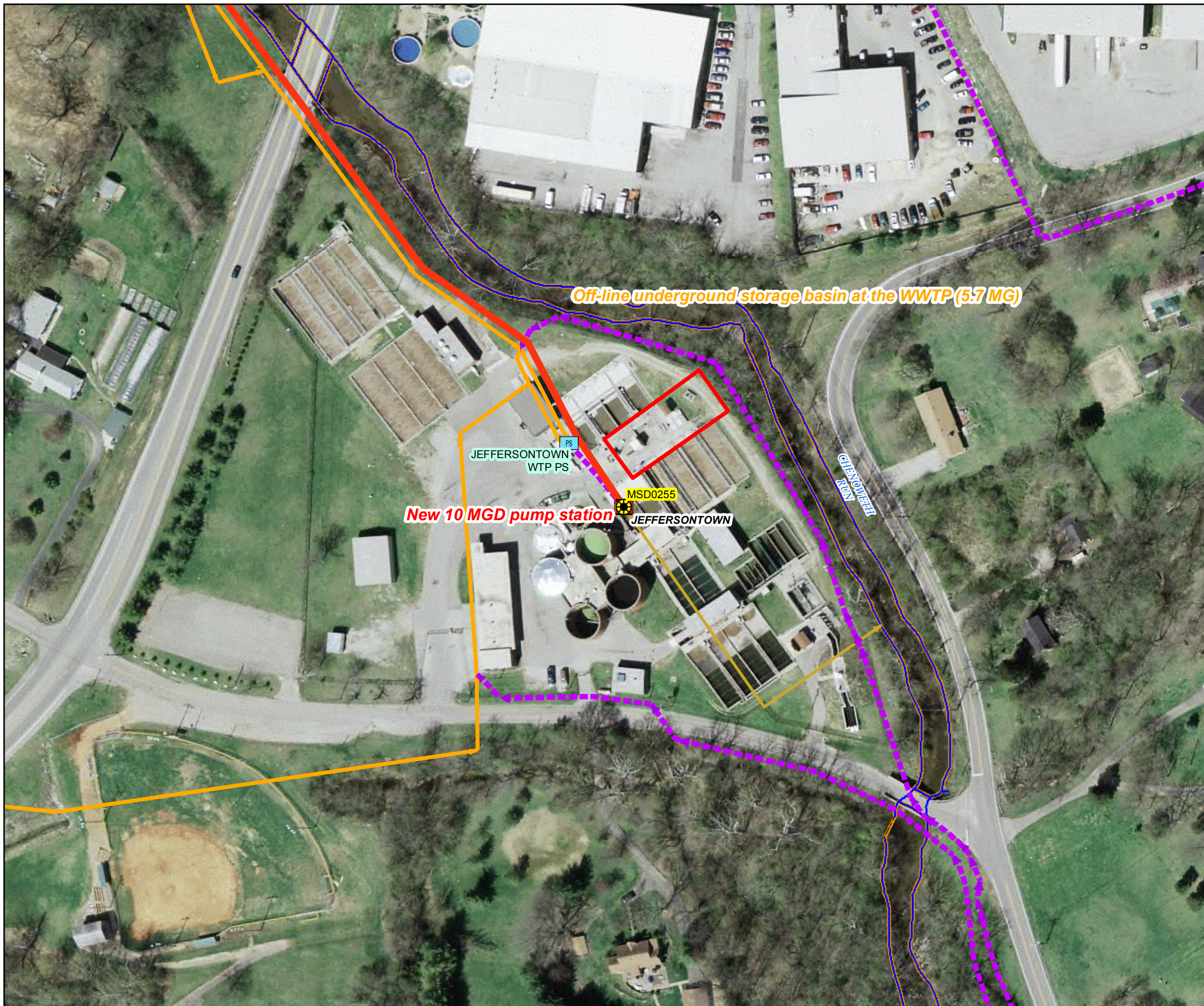
Some boundaries are uniquely symbolized within the map.

Map Revision
 May 07, 2009

Aerial Date: 2006



Copyright © 2008 LOUISVILLE AND JEFFERSON COUNTY METROPOLITAN SEWER DISTRICT (MSD), LOUISVILLE WATER COMPANY, LOUISVILLE METRO GOVERNMENT, and JEFFERSON COUNTY PROPERTY VALUATION ADMINISTRATOR (PVA). All Rights Reserved.





SSO SSDP Project Fact Sheet



SSO Project Number: S_JT_JT_NB01A_M_03_C

Project Name: Chenoweth Hills WQTC Elimination, Chenoweth Run and Chippewa PS Improvements

Modeled Area: Jeffersontown

Branch or SSO ID: NB01A

Project Type: Pump Station & Force Main Upgrades, WQTC Elimination

Receiving Stream: Chenoweth Run

Project Description: This alternative includes upgrading pumps at Chenoweth Run PS to pump 2.7 MGD and upsizing the entire 8,030 LF of force main to 12". Chenoweth Hills WQTC will be eliminated. Pumps at Chippewa PS upgraded to 0.15 MGD. Install 1,995 LF of new 15" sewer and replace 600 LF of 8" with 18" sewer pipe for Chenoweth Hills WQTC diversion.

Reason for Overflow: System capacity, siphon, and WQTC

Design Parameters / Assumptions: This solution is based on a 1.82 inch cloudburst rain event

Project Constraints: None at this time

Estimated Capital Cost (2008 dollars): \$3,140,000

Weighted Benefit/Cost Ratio (Present Worth): 20.05

Overflow Points Addressed:

<u>SSO</u>	<u>SSO Name</u>	<u>Service Area</u>	<u>Overflow Type</u>	<u>Discharge To</u>	<u>Average Overflow / Incident (gallons)</u>
64096	Chenoweth Run #1	Jeffersontown	Manhole	Stream	51
86052	4706 Chenoweth Run	Jeffersontown	Manhole	Stream	Suspected-no data

92061	11804 Chippewa Ridge Lane	Jeffersontown	Manhole	Ground	3,917
MSD0196-PS	Chenoweth Run	Jeffersontown	Lift Station	Stream	212,117
MSD0263A-PS	Chenoweth Hills WQTC PS	No Plant	Lift Station	Stream	108,767
MSD0263	Chenoweth Hills WQTC	Floyds Fork	Treatment Plant	Stream	2,767

Integrated Overflow Abatement Plan

Vol. 3 - Sanitary Sewer Discharge Plan

Jeffersontown Sewershed

Solution ID # S_JT_JT_NB01A_M_03_C

Chenoweth Hills WQTC Elimination, Chenoweth Run and Chippewa PS Improvements

Preliminary - For Budget Development Only

Legend

- Documented SSO
- Suspected SSO
- Haul Operation
- Proposed Pump Station Solution
- Pump Station
- WWTP
- Proposed Pipe Solution
- Force Main
- Collector < 12"
- Interceptor => 12"
- Combined Sewer Pipe
- Proposed Off-line Storage
- Road
- Streams
- Floodway
- Small WWTP Service Area
- Large WWTP Service Area
- CSO Area
- Metro Parks

General representation of overflow abatement solutions are for preliminary planning purposes. Alignments and locations may be altered during design.

1 inch = 800 feet
Scalable when printed on 11" X 17" paper



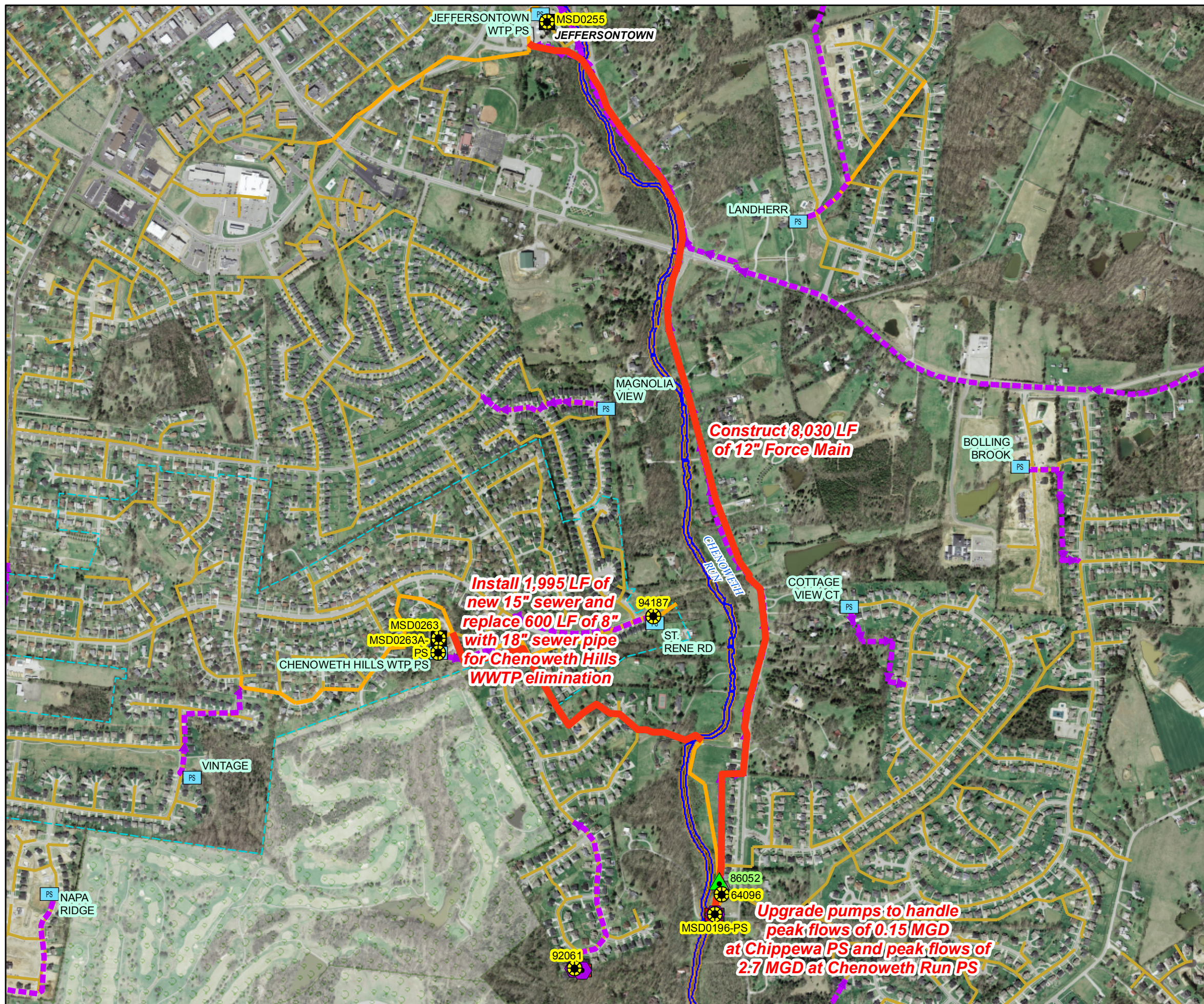
Some boundaries are uniquely symbolized within the map.

Map Revision
May 07, 2009

Aerial Date: 2006



Copyright © 2008 LOUISVILLE AND JEFFERSON COUNTY METROPOLITAN SEWER DISTRICT (MSD), LOUISVILLE WATER COMPANY, LOUISVILLE METRO GOVERNMENT, and JEFFERSON COUNTY PROPERTY VALUATION ADMINISTRATOR (PVA). All Rights Reserved.





SSO SSDP Project Fact Sheet



SSO Project Number: S_JT_JT_NB02_M_01_C

Project Name: Dell Rd. and Charlane Pkwy Interceptor Improvements

Modeled Area: Jeffersontown

Branch or SSO ID: NB02

Project Type: Pipe Upgrades

Receiving Stream: Chenoweth Run

Project Description: Upsize interceptor downstream of Charlane and Dell Road overflows with 3,788 LF of (10"-21") sewer.

Reason for Overflow: System capacity

Design Parameters / Assumptions: This solution is based on a 1.82 inch cloudburst rain event

Project Constraints: None at this time

Estimated Capital Cost (2008 dollars): \$917,000

Weighted Benefit/Cost Ratio (Present Worth): 31.34

Overflow Points Addressed:





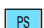







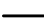






<u>SSO</u>	<u>SSO Name</u>	<u>Service Area</u>	<u>Overflow Type</u>	<u>Discharge To</u>	<u>Average Overflow / Incident (gallons)</u>
28249	Charlane Parkway/St Edwards Drive	Jeffersontown	Manhole	Ditch	14,676
28250	Charlane Parkway Near the Street	Jeffersontown	Manhole	Ditch	31,422

28336	Parking Lot Charlane Parkway	Jeffersontown	Manhole	Ditch	247,618
28340	Charlane Parkway at Pool	Jeffersontown	Manhole	Ground	36,804
28413	3317 Dell Road	Jeffersontown	Manhole	Ground	No Data
28414	3322 Dell Road	Jeffersontown	Manhole	Ground	55,012
28415	3406/3404 Dell Road	Jeffersontown	Manhole	Ground	143,920
28416	Marlin Drive	Jeffersontown	Manhole	Ground	78,000
28417	Locust Avenue/Marlin Drive	Jeffersontown	Manhole	Ground	15,000
104289	3620 Charlane Pky	Jeffersontown	Manhole	Stream	Suspected- no data

Integrated Overflow Abatement Plan
Vol. 3 - Sanitary Sewer Discharge Plan
 Jeffersontown Sewershed
 Solution ID # S_JT_JT_NB02_M_01_C
 Dell Rd and Charlane Pkwy
 Interceptor Improvements

Preliminary - For Budget Development Only

Legend

-  Documented SSO
-  Suspected SSO
-  Haul Operation
-  Proposed Pump Station Solution
-  Pump Station
-  WWTP
-  Proposed Pipe Solution
-  Force Main
-  Collector < 12"
-  Interceptor => 12"
-  Combined Sewer Pipe
-  Proposed Off-line Storage
-  Road
-  Streams
-  Floodway
-  Small WWTP Service Area
-  Large WWTP Service Area
-  CSO Area
-  Metro Parks

General representation of overflow abatement solutions are for preliminary planning purposes. Alignments and locations may be altered during design.

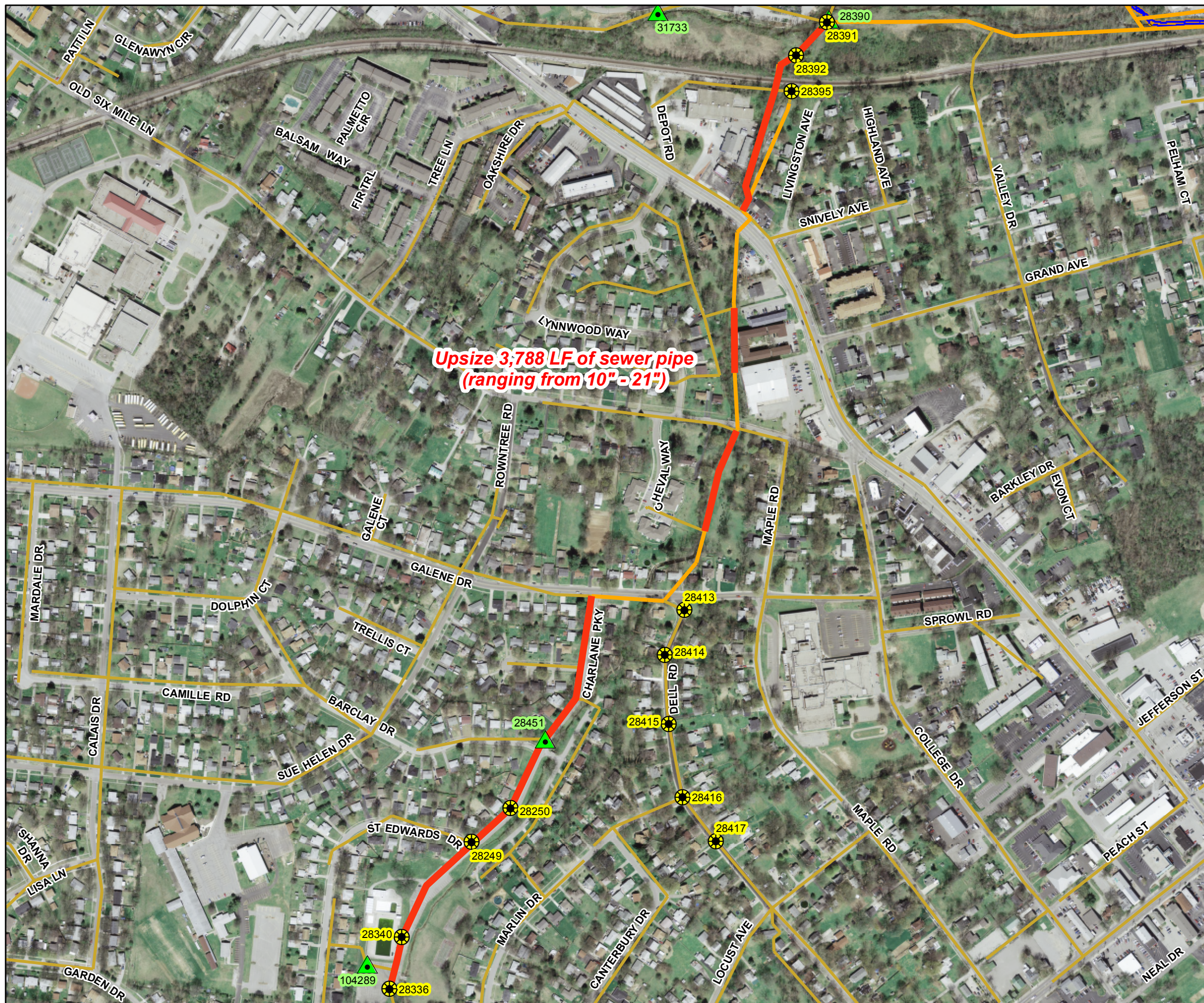
1 inch = 400 feet
 Scalable when printed on 11" X 17" paper



Some boundaries are uniquely symbolized within the map.
 Map Revision
 May 07, 2008
 Aerial Date: 2006



Copyright © 2008 LOUISVILLE AND JEFFERSON COUNTY METROPOLITAN SEWER DISTRICT (MSD), LOUISVILLE WATER COMPANY, LOUISVILLE METRO GOVERNMENT, and JEFFERSON COUNTY PROPERTY VALUATION ADMINISTRATOR (PVA). All Rights Reserved.





SSO SSDP Project Fact Sheets



SSO Project Number: S_JT_JT_NB03_M_01_C

Project Name: Raintree and Marian Ct. PS Eliminations 1 - PS Eliminations

Modeled Area: Jeffersontown

Branch or SSO ID: NB03

Project Type: Diversion

Receiving Stream: Avoca Creek

Project Description: This alternative eliminates two pump stations by installing 455 LF of 8" open cut sewer from Marian Ct PS and 400 LF of 8" from Raintree PS to divert flows to the SED.

Reason for Overflow: System & pump station capacity

Design Parameters / Assumptions: This solution is based on a 1.82 inch cloudburst rain event

Project Constraints: None

Estimated Capital Cost (2008 dollars): \$260,000

Weighted Benefit/Cost Ratio (Present Worth): 72.76

Overflow Points Addressed:

<u>SSO</u>	<u>SSO Name</u>	<u>Service Area</u>	<u>Overflow Type</u>	<u>Discharge To</u>	<u>Average Overflow / Incident (gallons)</u>
28711	9510 Taylorsville Road	Jeffersontown	Manhole	Ground	Suspected- no data
28719	Intersection of Gleeson and Wendell	Jeffersontown	Manhole	Ground	MOP-no data
28729	9100 Marian Ct (Wet Well for Marian Ct PS)	No Plant	Constructed	Catch Basin	Documented-no data
MSD0149-PS	Raintree	No Plant	Constructed	Ditch	No data

Integrated Overflow Abatement Plan

Vol. 3 - Sanitary Sewer Discharge Plan

Jeffersontown Sewershed

Solution ID # S_JT_JT_NB03_M_01_C

Raintree & Marian Ct PS Eliminations -1
PS Eliminations

Preliminary - For Budget Development Only

Legend

- Documented SSO
- Suspected SSO
- Haul Operation
- Proposed Pump Station Solution
- Pump Station
- WWTP
- Proposed Pipe Solution
- Force Main
- Collector < 12"
- Interceptor => 12"
- Combined Sewer Pipe
- Proposed Off-line Storage
- Road
- Streams
- Floodway
- Small WWTP Service Area
- Large WWTP Service Area
- CSO Area
- Metro Parks

General representation of overflow abatement solutions are for preliminary planning purposes. Alignments and locations may be altered during design.

1 inch = 160 feet
Scalable when printed on 11" X 17" paper



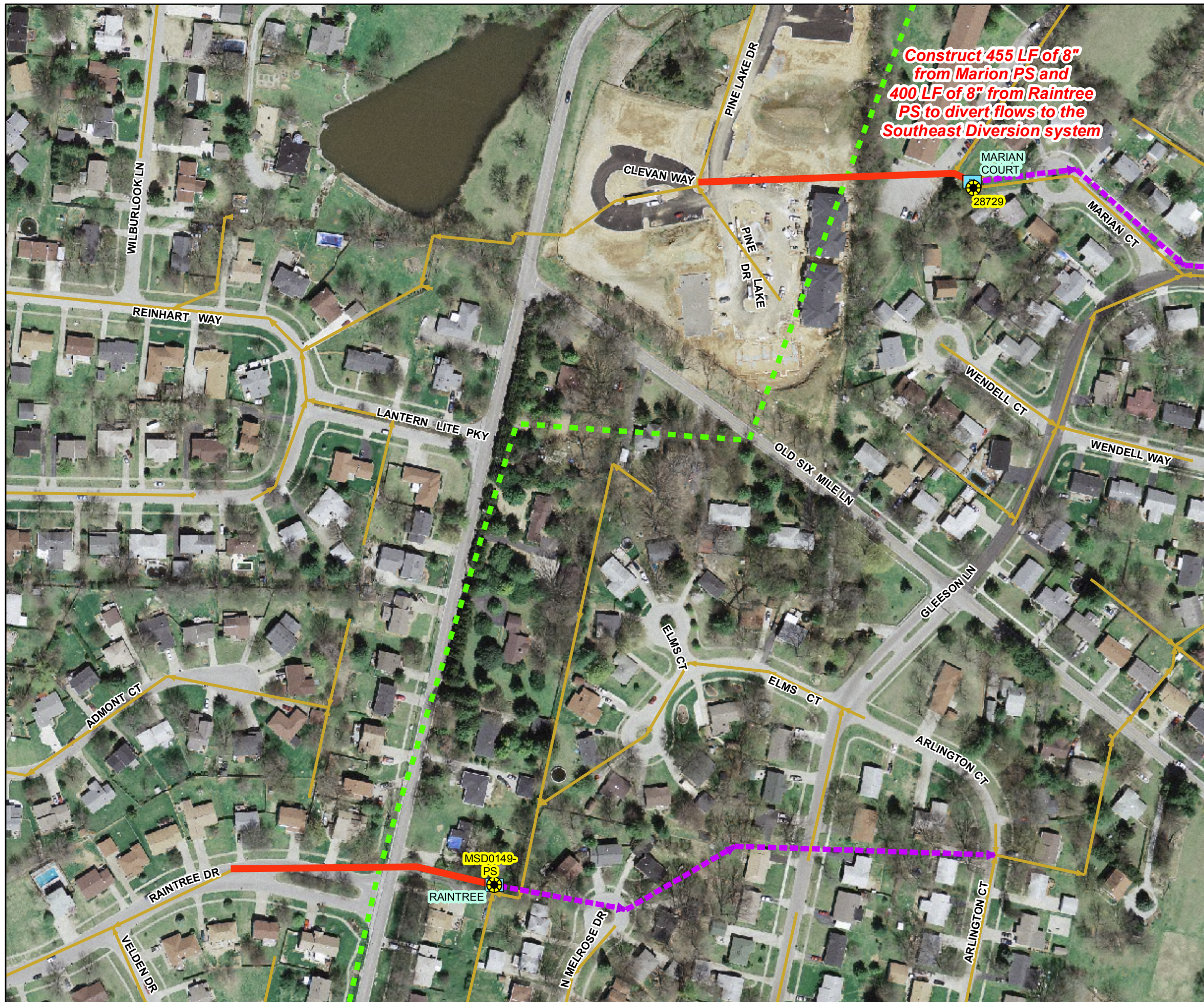
Some boundaries are uniquely symbolized within the map.

Map Revision
May 07, 2009

Aerial Date: 2006



Copyright © 2008 LOUISVILLE AND JEFFERSON COUNTY METROPOLITAN SEWER DISTRICT (MSD), LOUISVILLE WATER COMPANY, LOUISVILLE METRO GOVERNMENT, and JEFFERSON COUNTY PROPERTY VALUATION ADMINISTRATOR (PVA). All Rights Reserved.



Construct 455 LF of 8" from Marian PS and 400 LF of 8" from Raintree PS to divert flows to the Southeast Diversion system



SSO SSDP Project Fact Sheets



SSO Project Number: S_JT_JT_NB03_M_01_C

Project Name: Raintree and Marian Ct. PS Eliminations 2 - Pipe Upgrades

Modeled Area: Jeffersontown

Branch or SSO ID: NB03

Project Type: Pipe Upgrades

Receiving Stream: Avoca Creek

Project Description: This alternative includes 2,675 LF of 15" interceptor upgrades

Reason for Overflow: System & pump station capacity

Design Parameters / Assumptions: This solution is based on a 1.82 inch cloudburst rain event

Project Constraints: None

Estimated Capital Cost (2008 dollars): \$745,000

Weighted Benefit/Cost Ratio (Present Worth): 72.76





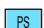







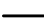






Overflow Points Addressed:

<u>SSO</u>	<u>SSO Name</u>	<u>Service Area</u>	<u>Overflow Type</u>	<u>Discharge To</u>	<u>Average Overflow / Incident (gallons)</u>
28711	9510 Taylorsville Road	Jeffersontown	Manhole	Ground	Suspected- no data
28719	Intersection of Gleeson and Wendell	Jeffersontown	Manhole	Ground	MOP-no data
28729	9100 Marian Ct (Wet Well for Marian Ct PS)	No Plant	Constructed	Catch Basin	Documented-no data
MSD0149-PS	Raintree	No Plant	Constructed	Ditch	No data

Integrated Overflow Abatement Plan
Vol. 3 - Sanitary Sewer Discharge Plan
 Jeffersontown Sewershed
 Solution ID # S_JT_JT_NB03_M_01_C
 Raintree & Marian Ct PS Eliminations - 2
 Pipe Upgrades

Preliminary - For Budget Development Only

Legend

-  Documented SSO
-  Suspected SSO
-  Haul Operation
-  Proposed Pump Station Solution
-  Pump Station
-  WWTP
-  Proposed Pipe Solution
-  Force Main
-  Collector < 12"
-  Interceptor => 12"
-  Combined Sewer Pipe
-  Proposed Off-line Storage
-  Road
-  Streams
-  Floodway
-  Small WWTP Service Area
-  Large WWTP Service Area
-  CSO Area
-  Metro Parks

General representation of overflow abatement solutions are for preliminary planning purposes. Alignments and locations may be altered during design.

1 inch = 300 feet
 Scalable when printed on 11" X 17" paper



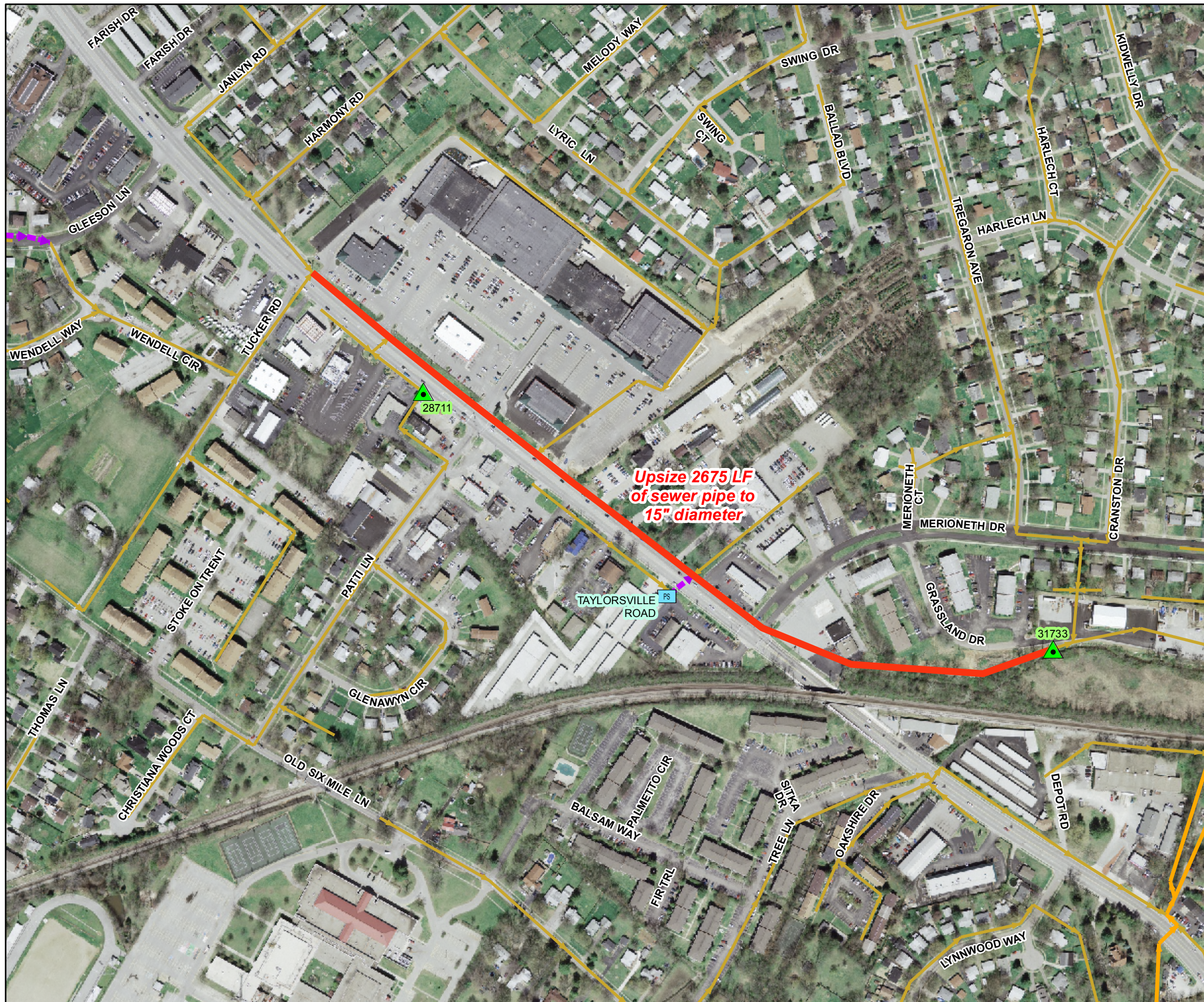
Some boundaries are uniquely symbolized within the map.

Map Revision
 May 07, 2009

Aerial Date: 2006



Copyright © 2008 LOUISVILLE AND JEFFERSON COUNTY METROPOLITAN SEWER DISTRICT (MSD), LOUISVILLE WATER COMPANY, LOUISVILLE METRO GOVERNMENT, and JEFFERSON COUNTY PROPERTY VALUATION ADMINISTRATOR (PVA). All Rights Reserved.



**Upsize 2675 LF
of sewer pipe to
15" diameter**

TAYLORSVILLE
ROAD PS

28711

31733



SSO SSDP Project Fact Sheet



SSO Project Number: S_JT_JT_NB04_M_01_A

Project Name: Monticello PS Elimination

Modeled Area: Jeffersontown

Branch or SSO ID: NB04

Project Type: Diversion

Receiving Stream: Chenoweth Run and Fern Creek

Project Description: This alternative includes eliminating Monticello PS by diverting to West County with 625 LF of 8" sewer.

Reason for Overflow: Pump station capacity

Design Parameters / Assumptions: This solution is based on a 2.60 inch cloudburst rain event

Project Constraints: None at this time

Estimated Capital Cost (2008 dollars): \$207,000

Weighted Benefit/Cost Ratio (Present Worth): 65.85

Overflow Points Addressed:

<u>SSO</u>	<u>SSO Name</u>	<u>Service Area</u>	<u>Overflow Type</u>	<u>Discharge To</u>	<u>Average Overflow / Incident (gallons)</u>
27969	4304 Rivanna Dr	Jeffersontown	Manhole	Ground	Suspected- no data
MSD0151-PS	Monticello Place	Jeffersontown	Lift Station	Ground	10,000

Integrated Overflow Abatement Plan

Vol. 3 - Sanitary Sewer Discharge Plan

Jeffersontown Sewershed

Solution ID # S_JT_JT_NB04_M_01_A

Monticello PS Elimination

Preliminary - For Budget Development Only

Legend

- Documented SSO
- Suspected SSO
- Haul Operation
- Proposed Pump Station Solution
- Pump Station
- WWTP
- Proposed Pipe Solution
- Force Main
- Collector < 12"
- Interceptor => 12"
- Combined Sewer Pipe
- Proposed Off-line Storage
- Road
- Streams
- Floodway
- Small WWTP Service Area
- Large WWTP Service Area
- CSO Area
- Metro Parks

General representation of overflow abatement solutions are for preliminary planning purposes. Alignments and locations may be altered during design.

1 inch = 100 feet
Scalable when printed on 11" X 17" paper



Some boundaries are uniquely symbolized within the map.

Map Revision
MAY 07, 2009

Aerial Date: 2006



Copyright © 2008 LOUISVILLE AND JEFFERSON COUNTY METROPOLITAN SEWER DISTRICT (MSD), LOUISVILLE WATER COMPANY, LOUISVILLE METRO GOVERNMENT, and JEFFERSON COUNTY PROPERTY VALUATION ADMINISTRATOR (PVA). All Rights Reserved.

