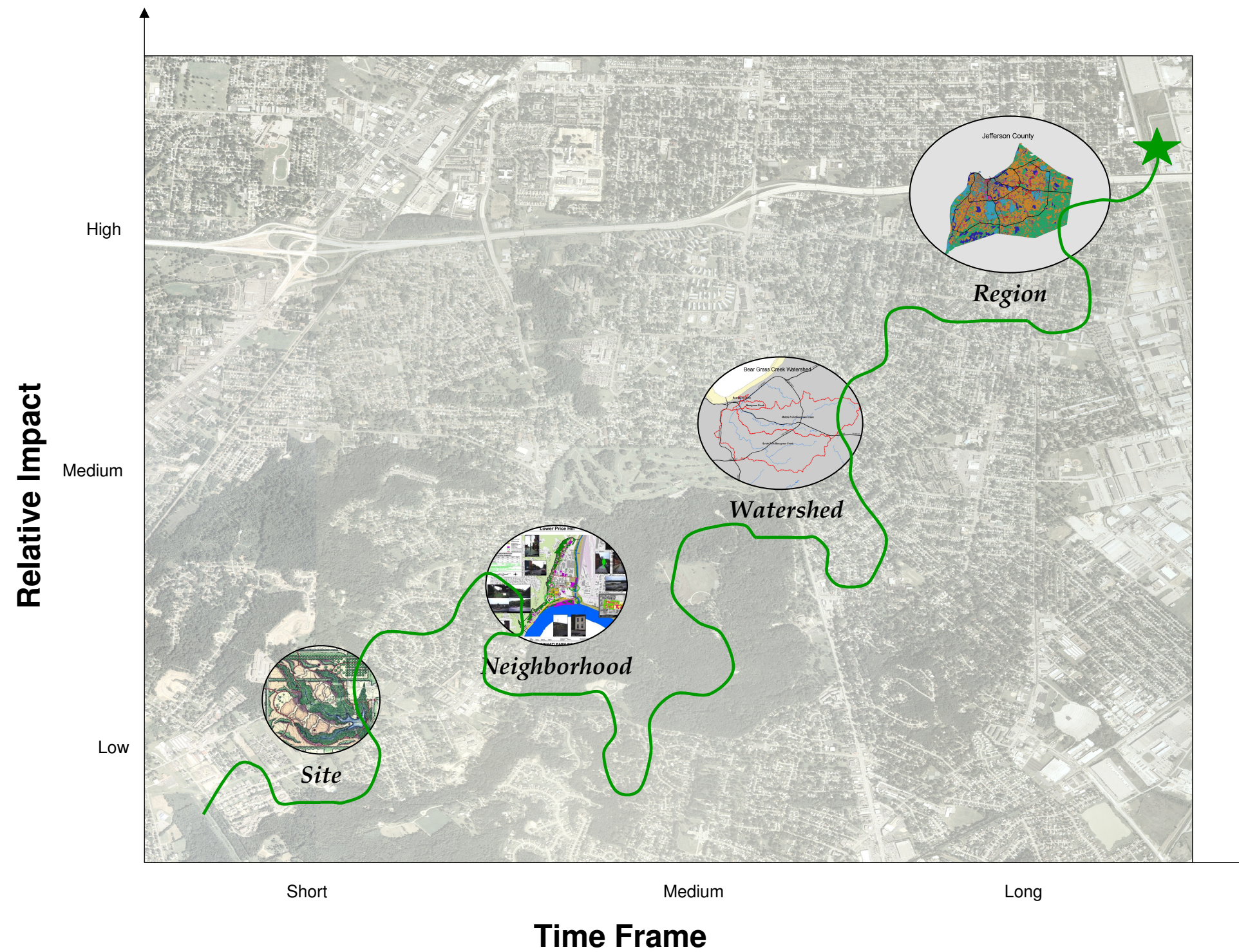


FIGURE 3.2.1
GRAPHICAL DEPICTION OF
GREEN INFRASTRUCTURE STRATEGY

Green Infrastructure Strategy

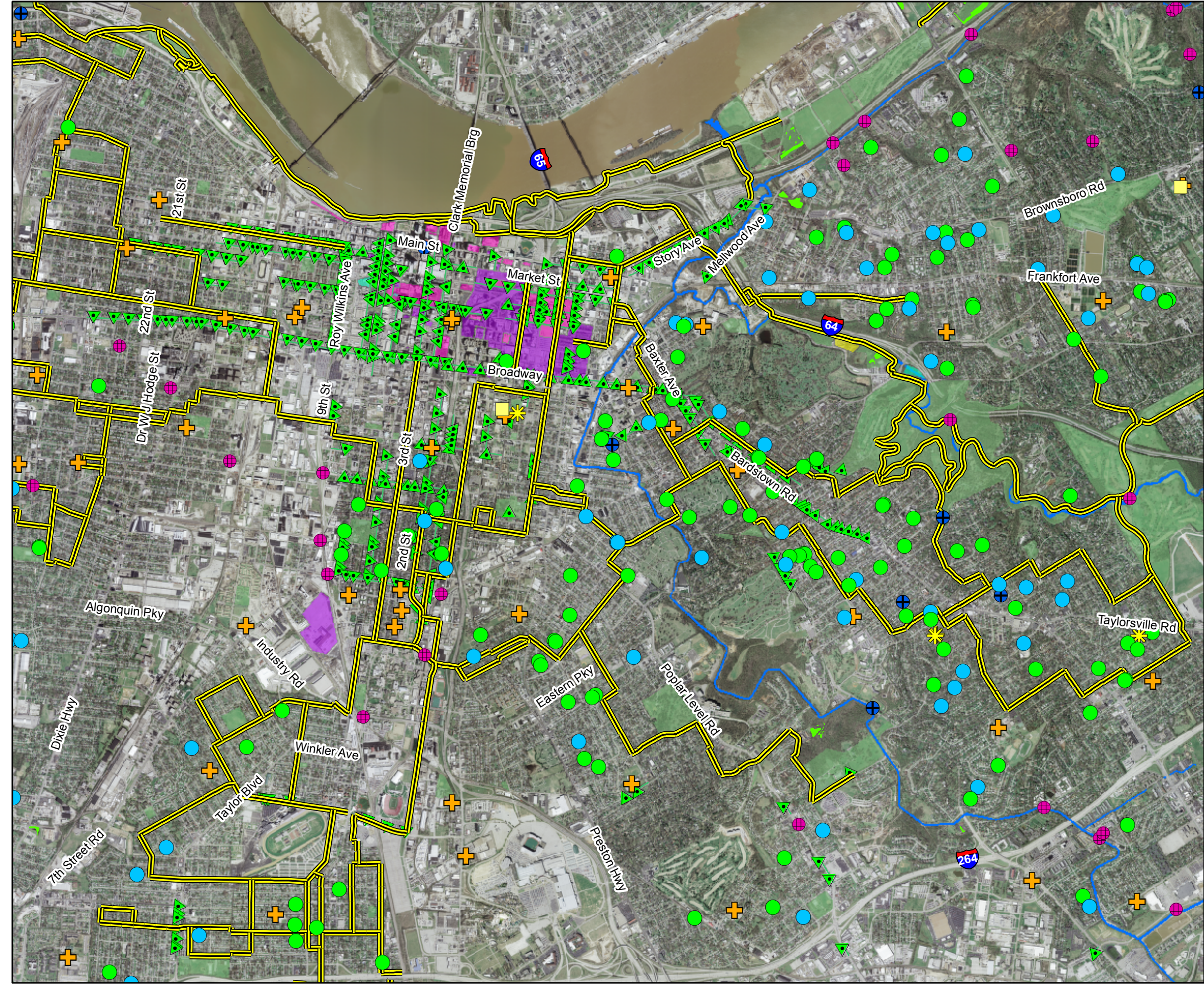


Copyright © 2008 LOUISVILLE AND JEFFERSON COUNTY METROPOLITAN SEWER DISTRICT (MSD), LOUISVILLE WATER COMPANY, LOUISVILLE METRO GOVERNMENT, and JEFFERSON COUNTY PROPERTY VALUATION ADMINISTRATOR (PVA). All Rights Reserved.

Integrated Overflow Abatement Plan
Vol. 2 - Final CSO Long-Term Control Plan
FIGURE 3.2.2
EXISTING AND POTENTIAL GREEN
ACTIVITIES IN LOUISVILLE AND
JEFFERSON COUNTY AS OF AUGUST 2008




LEGEND

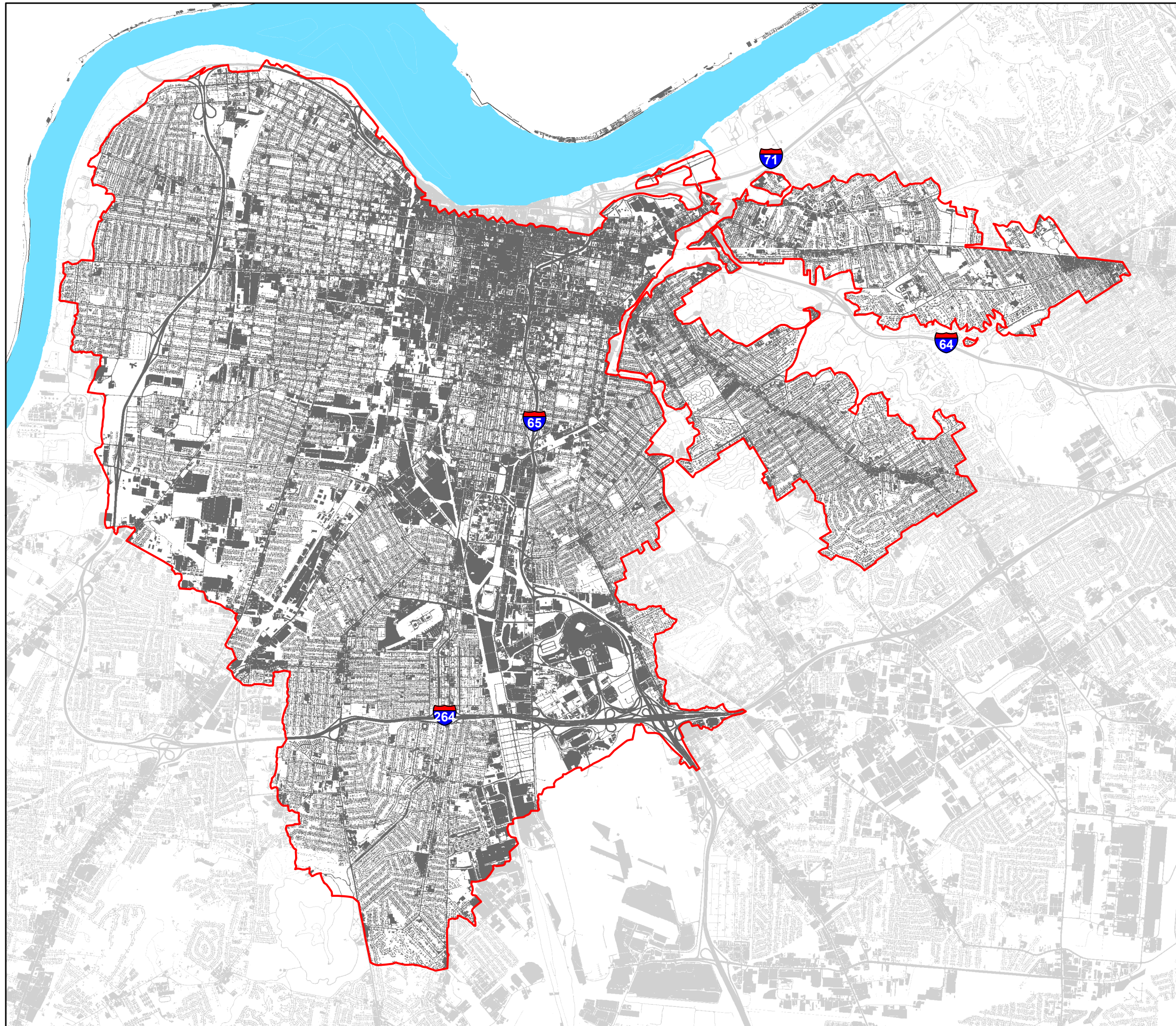
-  Outdoor Classroom
-  Rain Barrel
-  Rain Garden
-  Rain Barrel Request
-  Drainage Hot Spots
-  Consent Decree Projects
-  Public Schools
-  Bikeway
-  Community of Trees
-  Mosquito Pretreatment Zones
-  Existing Green Projects
-  Proposed Green Projects
-  Proposed New Construction
-  Proposed Renovation
-  Stream
-  Metro Parks



Integrated Overflow Abatement Plan
Vol. 2 - Final CSO Long Term Control Plan
FIGURE 3.2.3
IMPERVIOUS SURFACES
WITHIN THE COMBINED SYSTEM

LEGEND

-  CSO Boundary
-  Ohio River
-  Storm Water Impervious Area



Copyright © 2008 LOUISVILLE AND JEFFERSON COUNTY METROPOLITAN SEWER DISTRICT (MSD), LOUISVILLE WATER COMPANY, LOUISVILLE METRO GOVERNMENT, and JEFFERSON COUNTY PROPERTY VALUATION ADMINISTRATOR (PVA). All Rights Reserved.

FIGURE 3.2.4
HISTORIC CIVIL WAR MAP

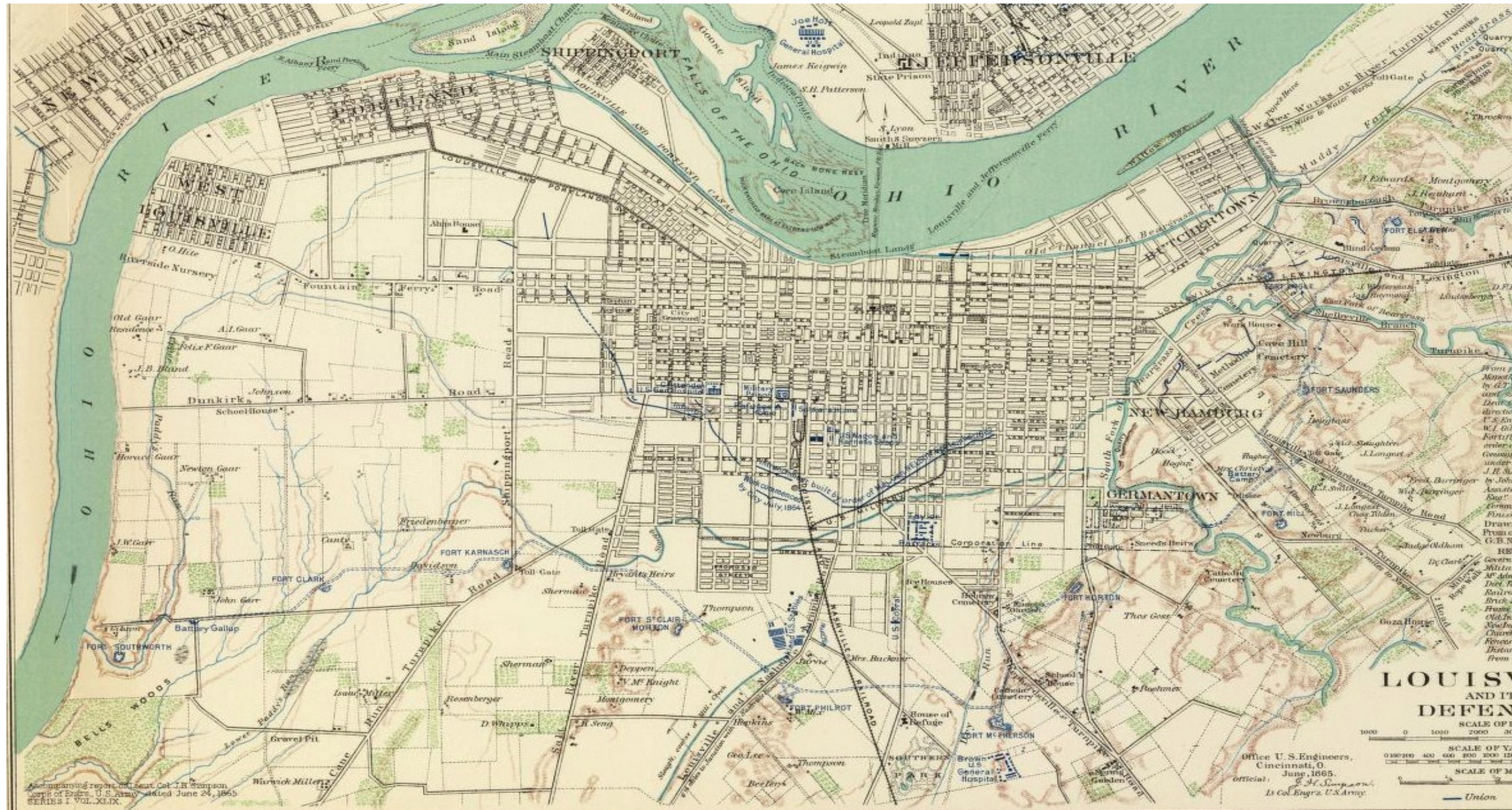
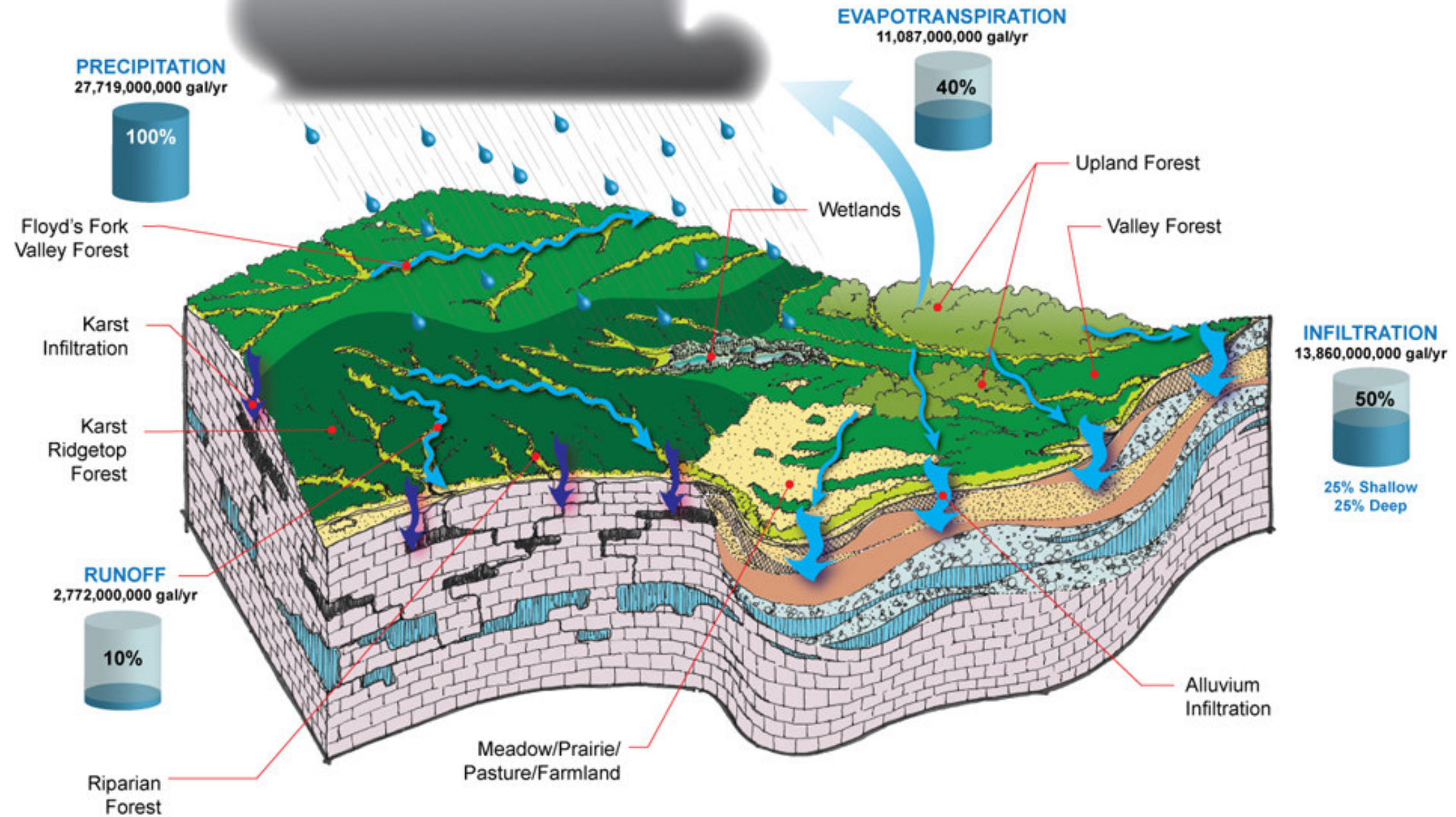


FIGURE 3.2.5
RUNOFF SCENARIO
IN NATURAL CONDITIONS

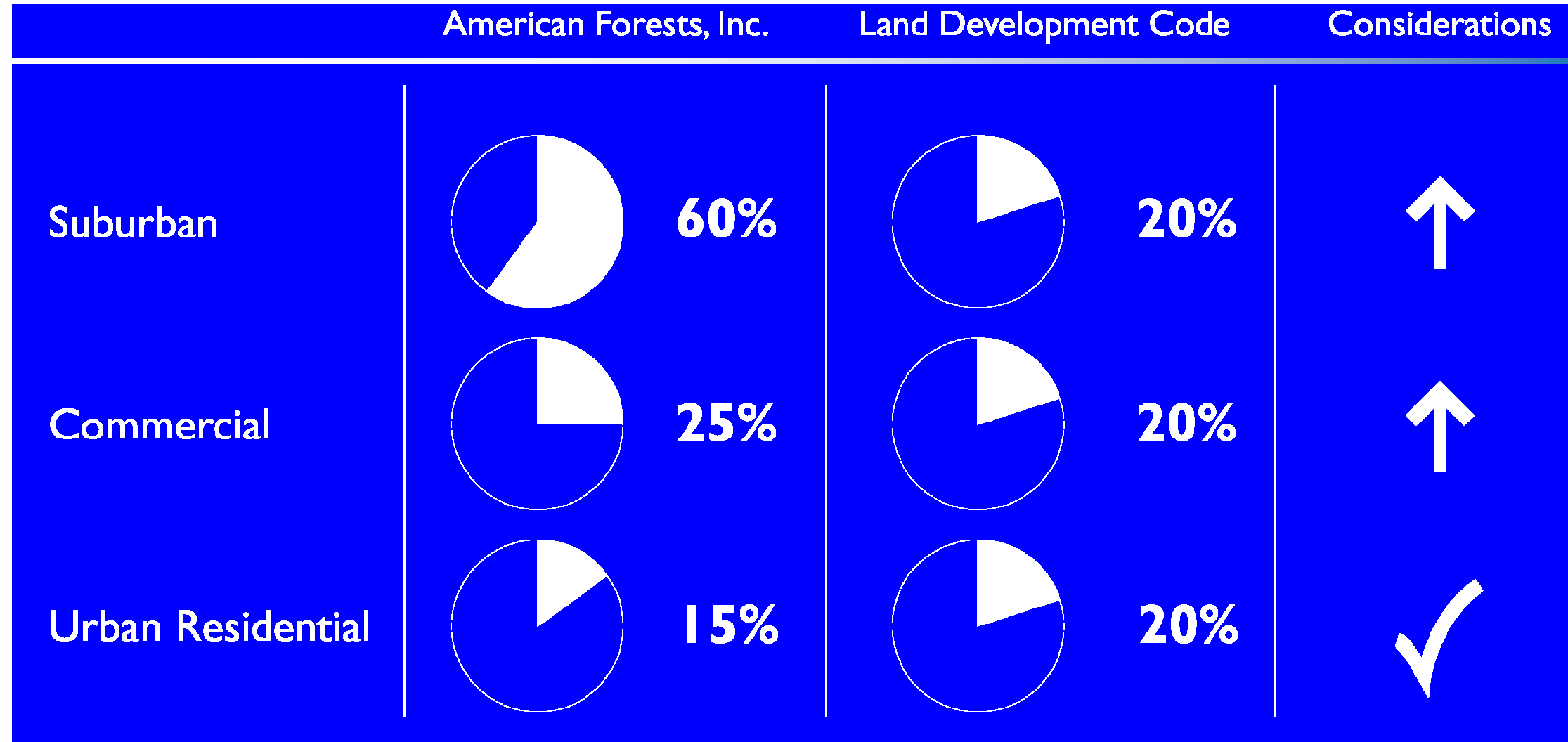


NOTE: Water quantities are for CSO areas only.

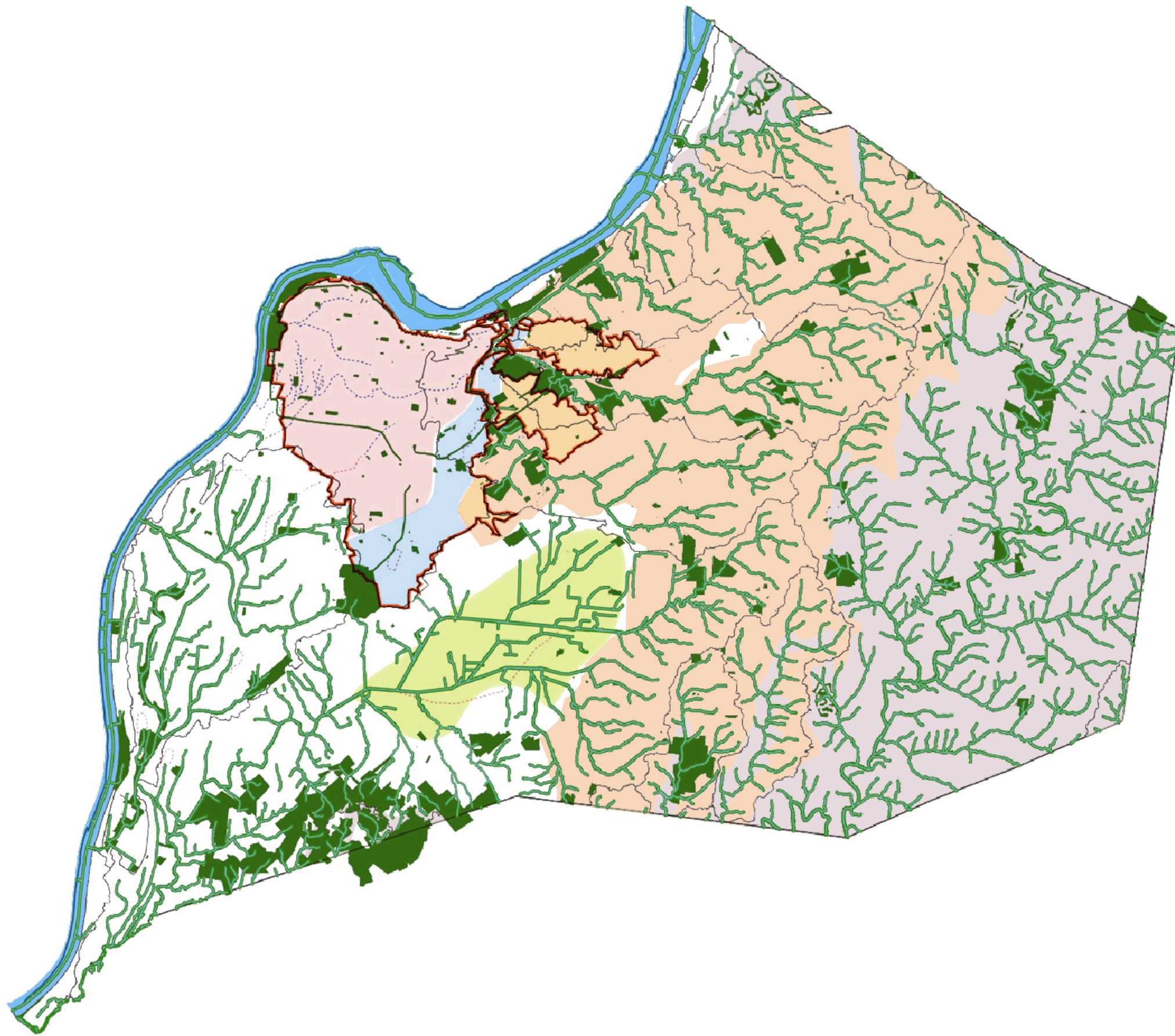


Copyright © 2008 LOUISVILLE AND JEFFERSON COUNTY METROPOLITAN SEWER DISTRICT (MSD), LOUISVILLE WATER COMPANY, LOUISVILLE METRO GOVERNMENT, and JEFFERSON COUNTY PROPERTY VALUATION ADMINISTRATOR (PVA). All Rights Reserved.











**FIGURE 3.2.6
TREE CANOPY
EVALUATION RESULTS**



Integrated Overflow Abatement Plan
Vol. 2 - Final CSO Long-Term Control Plan
FIGURE 3.2.7
CSS SYSTEM AND THE
LOCAL STREAM NETWORKS



LEGEND

-  Streams with LDC-Recommended Buffers
-  Historic Streams
-  Loess Terrace Geology with Moderate Infiltration Potential
-  Karst Geology with Strategic Infiltration Potential
-  Alluvial Geology with High Infiltration Potential
-  Karst (Major)
-  Karst (Moderate)
-  Low Land
-  Watershed
-  Metro Parks & Open Space

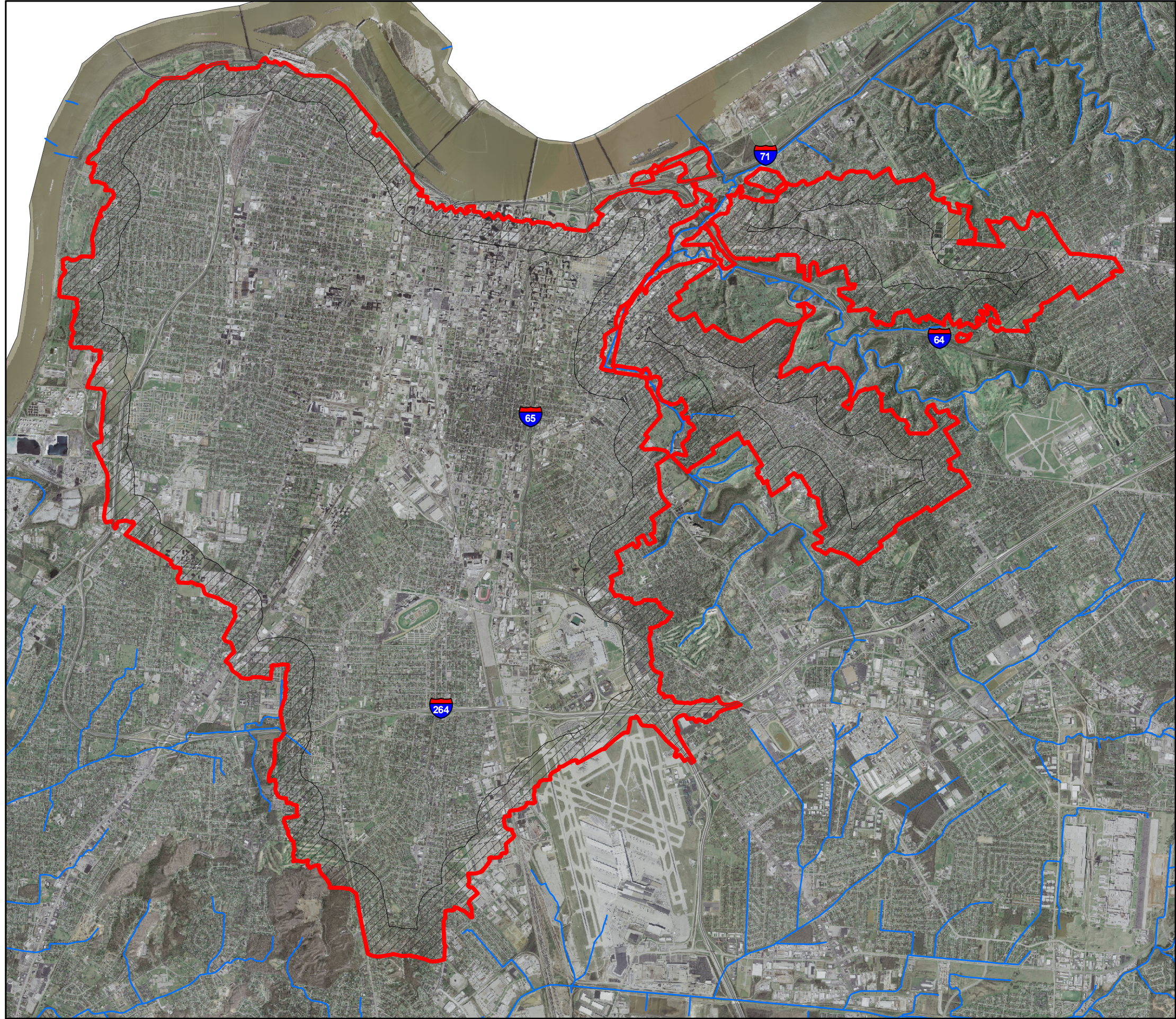


Copyright © 2008 LOUISVILLE AND JEFFERSON COUNTY METROPOLITAN SEWER DISTRICT (MSD), LOUISVILLE WATER COMPANY, LOUISVILLE METRO GOVERNMENT, and JEFFERSON COUNTY PROPERTY VALUATION ADMINISTRATOR (PVA). All Rights Reserved.

Integrated Overflow Abatement Plan

Vol. 2 - Final CSO Long-Term Control Plan

**FIGURE 3.2.8
STUDY AREA PARALLEL TO THE CSS
1/4 MILE INSIDE EXISTING BOUNDARY
FOR STORMWATER REDIRECTION**



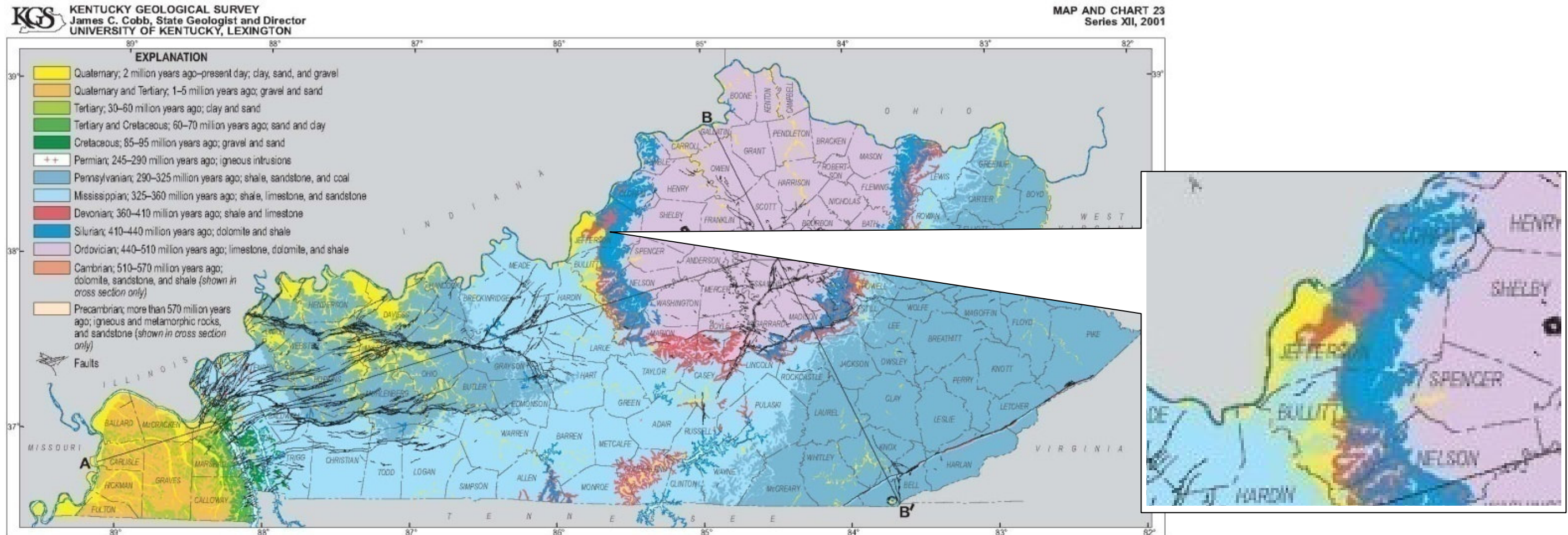
LEGEND

- Major Roads
- ~ Streams
- ▭ CSO Boundary
- ▨ 1/4Mile CSO Buffer (8,000 Acres)

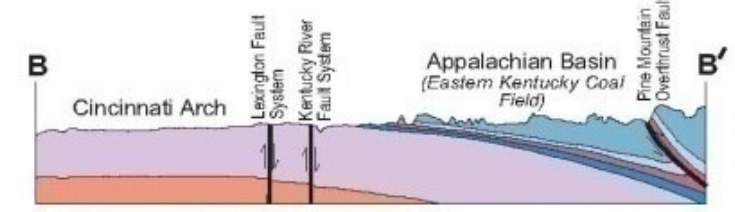
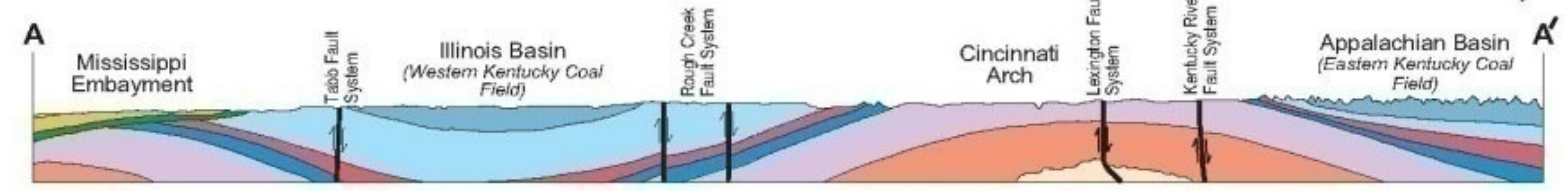


Copyright © 2008 LOUISVILLE AND JEFFERSON COUNTY METROPOLITAN SEWER DISTRICT (MSD), LOUISVILLE WATER COMPANY, LOUISVILLE METRO GOVERNMENT, and JEFFERSON COUNTY PROPERTY VALUATION ADMINISTRATOR (PVA). All Rights Reserved.

FIGURE 3.2.9
KENTUCKY GEOLOGIC MAP



GEOLOGIC MAP OF KENTUCKY



Generalized geologic cross sections

Cross sections are diagrammatic; not to scale

Copyright © 2001
University of Kentucky
Kentucky Geological Survey

Compiled from Noger, M.C., 1988, Geologic map of Kentucky: U.S. Geological Survey, scale 1:500,000.
Cartography by Terry Hounshell

View the KGS World Wide Web site at www.uky.edu/kgs

For information on obtaining copies of this map and other Kentucky Geological Survey maps and publications call:
Publication Sales
(859) 257-3896

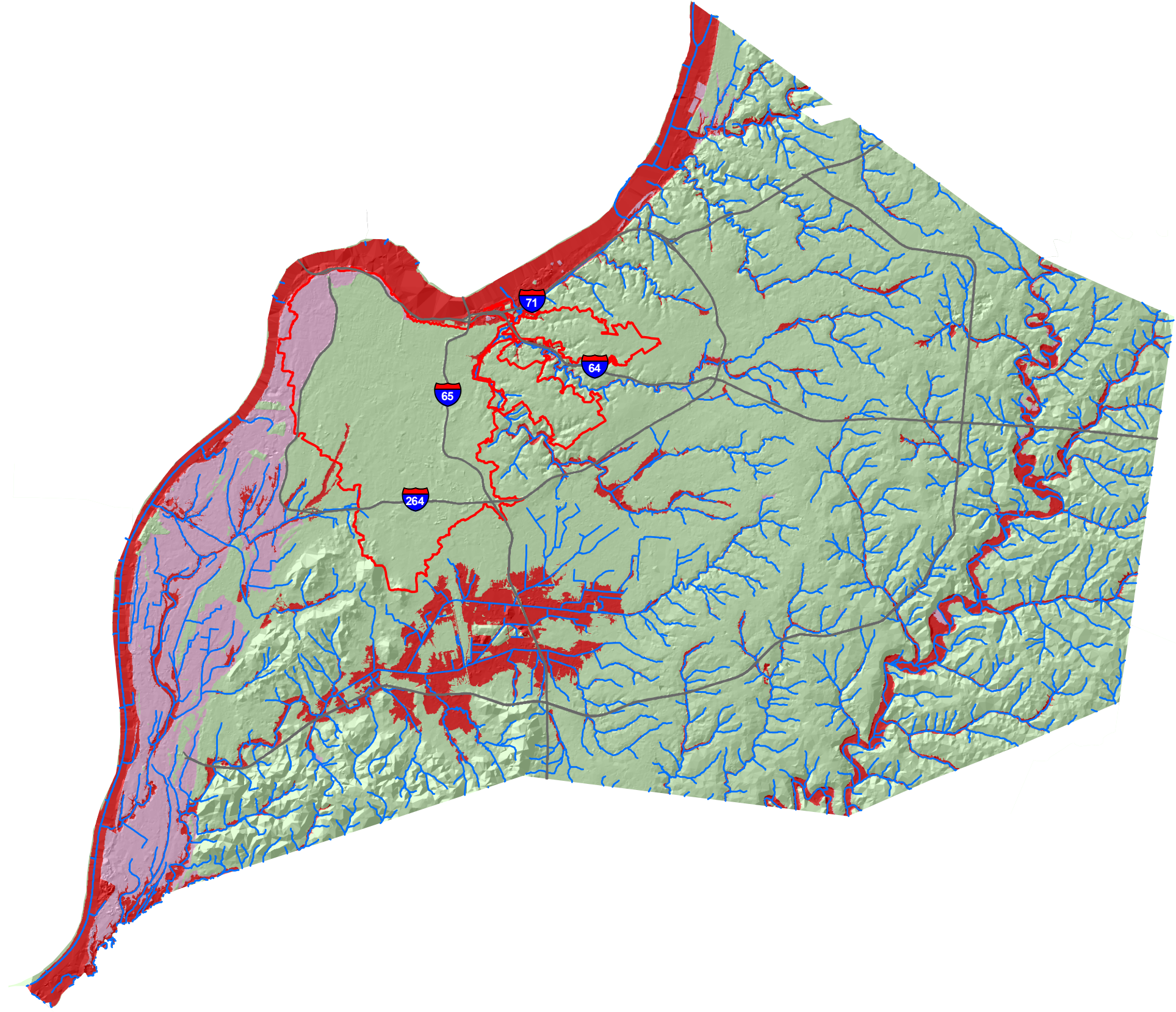


Copyright © 2008 LOUISVILLE AND JEFFERSON COUNTY METROPOLITAN SEWER DISTRICT (MSD), LOUISVILLE WATER COMPANY, LOUISVILLE METRO GOVERNMENT, and JEFFERSON COUNTY PROPERTY VALUATION ADMINISTRATOR (PVA). All Rights Reserved

Integrated Overflow Abatement Plan

Vol. 2 - Final CSO Long-Term Control Plan

**FIGURE 3.2.10
Flood Zones**



LEGEND

- Major Roads
- ~ Streams
- CSO Boundary

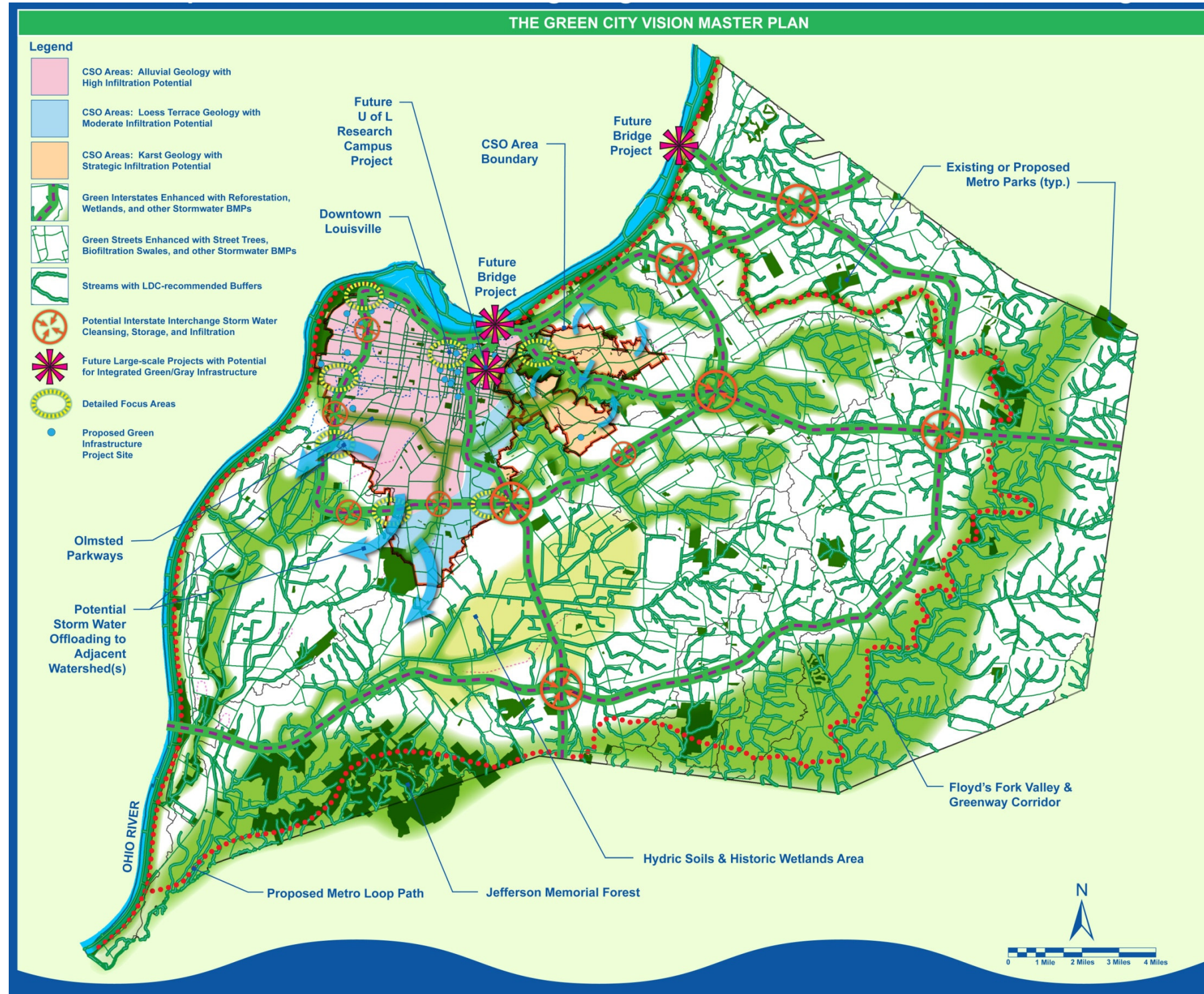
Flood Zones

- Outside Floodplain
- 100 Yr Floodplain
- 500 Yr Floodplain

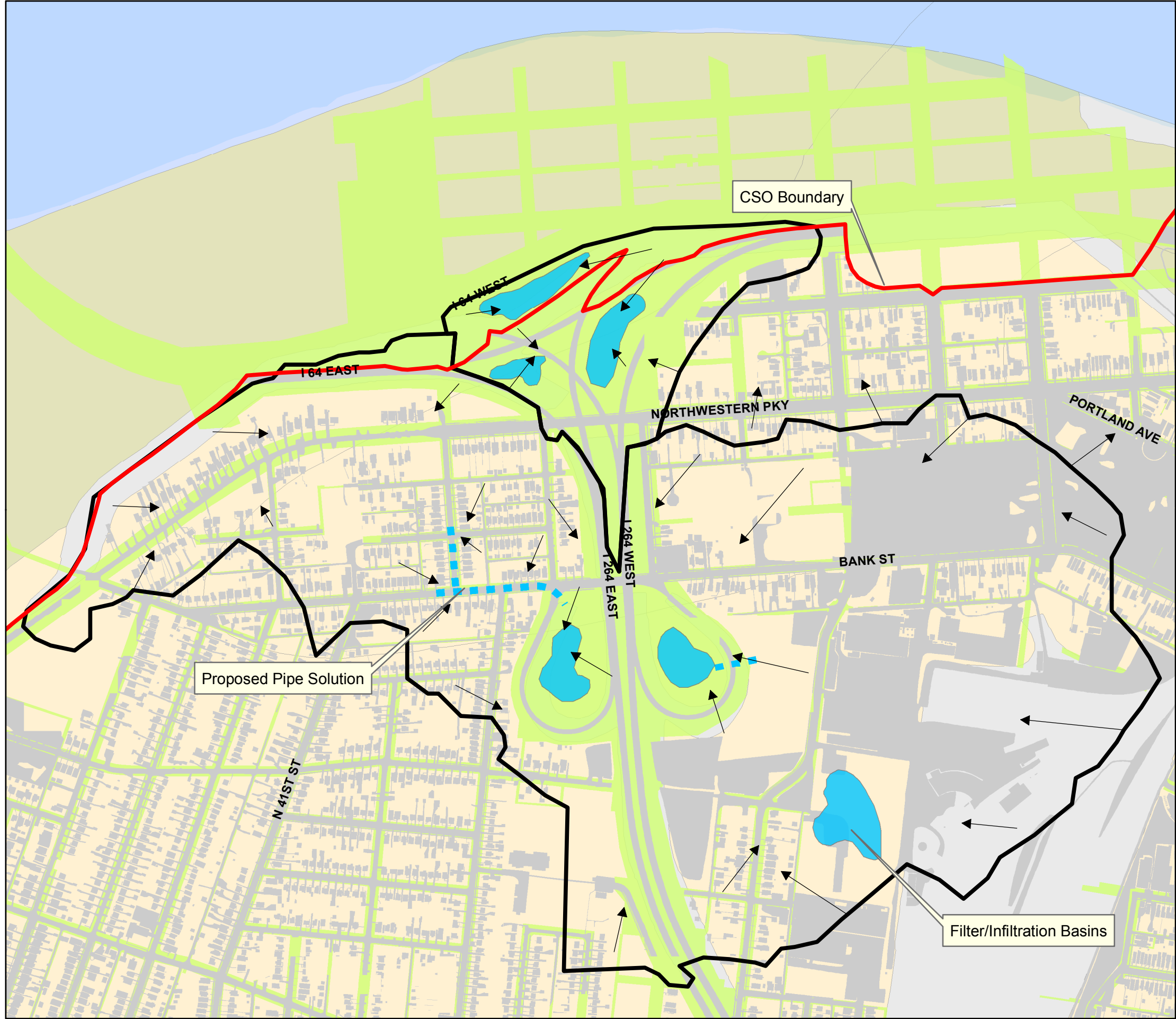


Copyright © 2008 LOUISVILLE AND JEFFERSON COUNTY METROPOLITAN SEWER DISTRICT (MSD), LOUISVILLE WATER COMPANY, LOUISVILLE METRO GOVERNMENT, and JEFFERSON COUNTY PROPERTY VALUATION ADMINISTRATOR (PVA). All Rights Reserved.

**FIGURE 3.2.11
GRAPHICAL DEPICTION
OF REGIONAL EVALUATION**



Integrated Overflow Abatement Plan
Vol. 2 - Final CSO Long-Term Control Plan
FIGURE 3.2.12
NORTHWEST GREEN FOCUS AREA



LEGEND

- Flow Direction
- ▬ Proposed Pipe Solution
- ▭ CSO Boundary
- ▭ Drainage Area
- ▭ Potential Infiltration Area
- ▭ Impervious Area
- ▭ Right of Way
- ▭ Ohio River
- ▭ Alluvium
- ▭ Glacial outwash (Wisconsinan)
- ▭ Artificial fill

Soils
 Outwash; Silts and clays in upper 15 to 20 feet, sands below, grading into gravel. Limestone 70 to 100 feet deep

Features	Area (Acres)
Drainage Basin NW	272
<i>Interstate</i>	
Road Right of Way	50
Impervious	17
<i>Metro</i>	
Road Right of Way	22
Impervious	15
<i>Other</i>	
Impervious	72



Copyright © 2008 LOUISVILLE AND JEFFERSON COUNTY METROPOLITAN SEWER DISTRICT (MSD), LOUISVILLE WATER COMPANY, LOUISVILLE METRO GOVERNMENT, and JEFFERSON COUNTY PROPERTY VALUATION ADMINISTRATOR (PVA). All Rights Reserved.