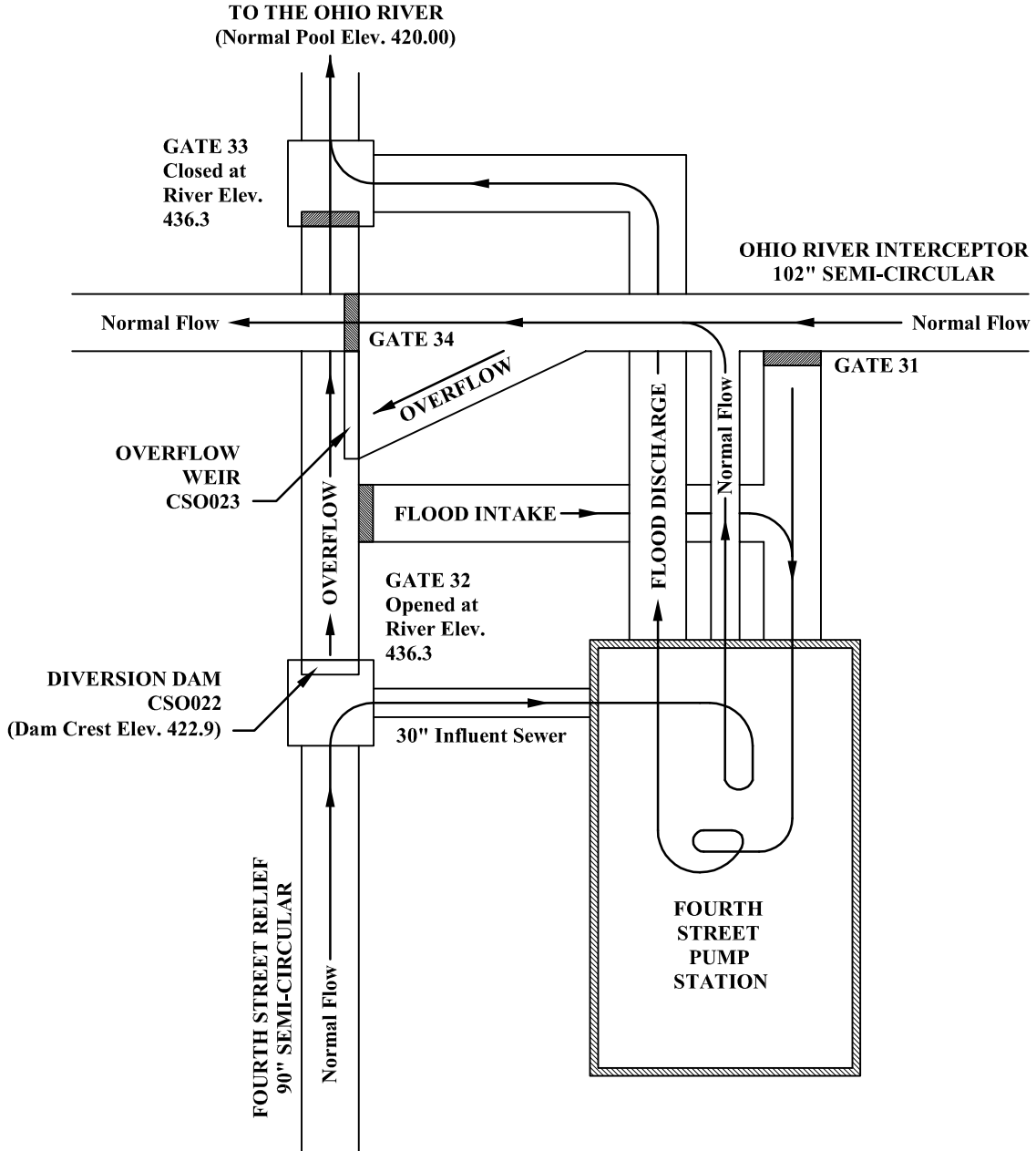
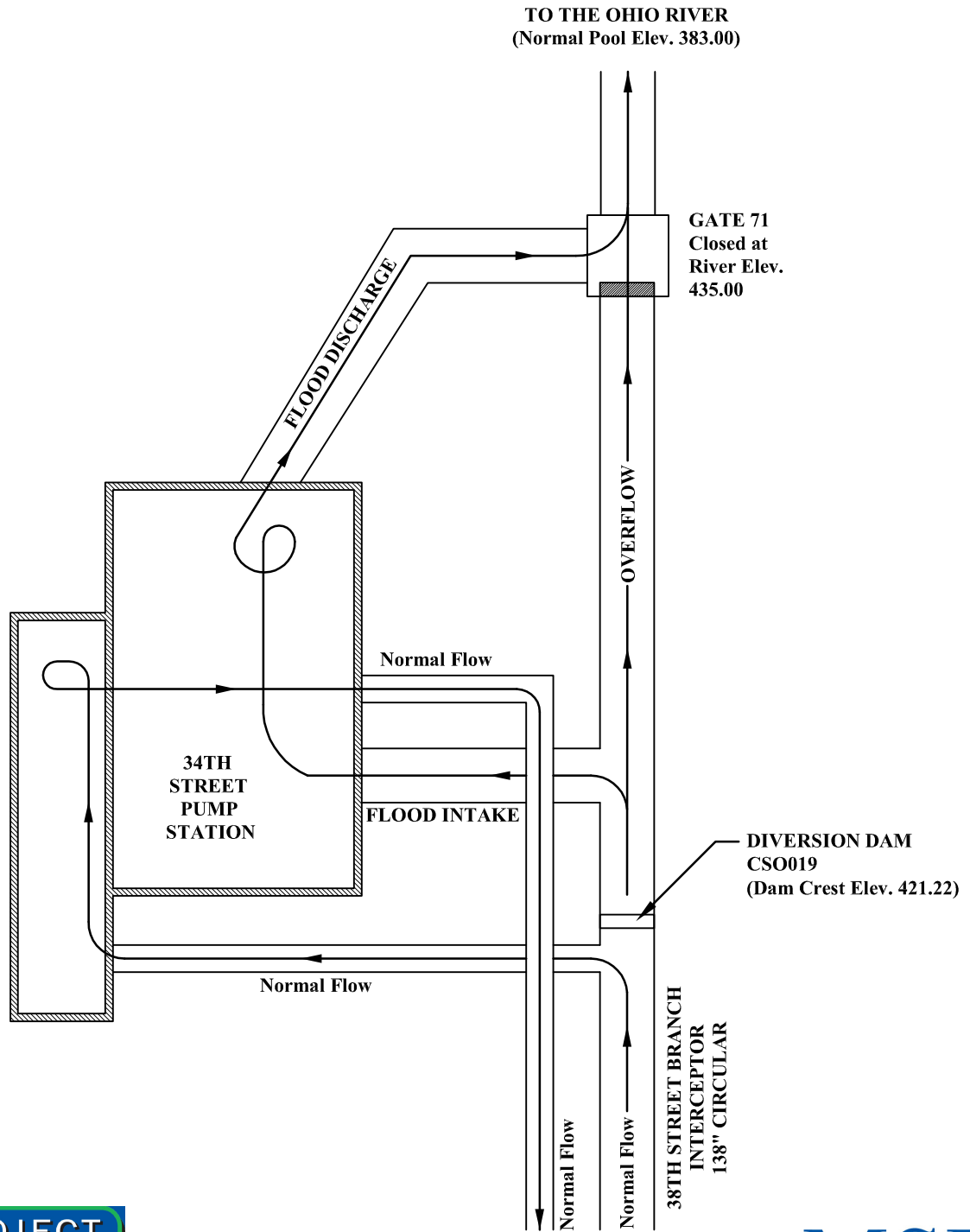


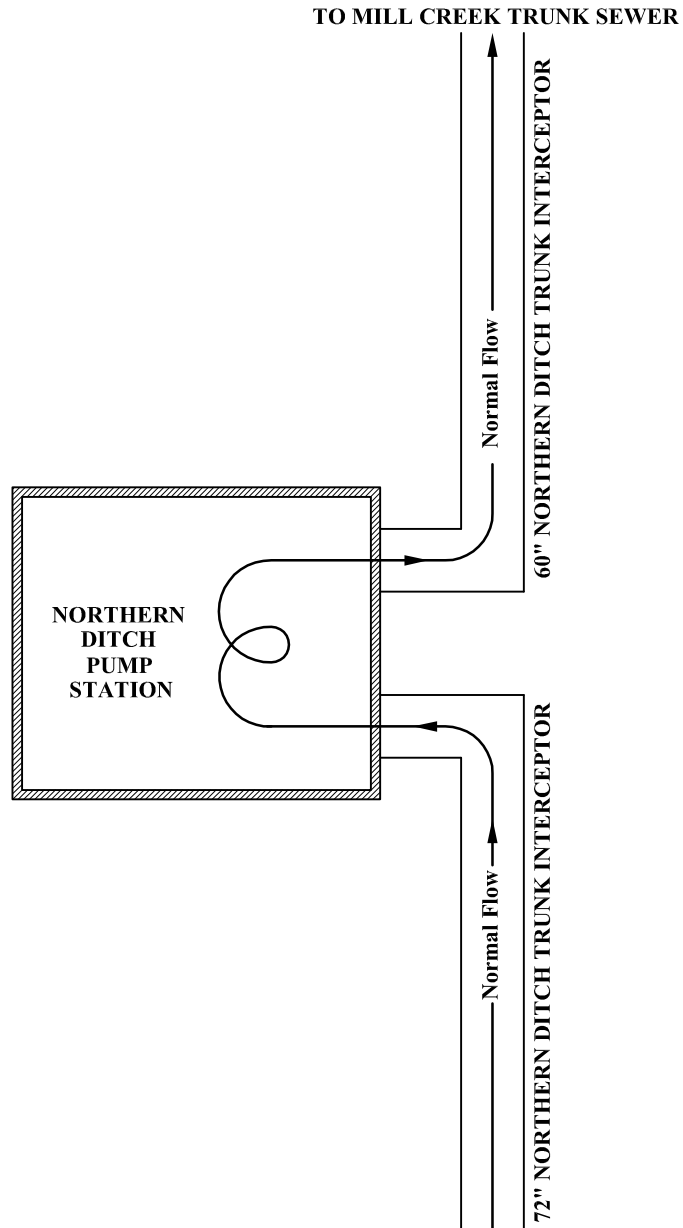
**FIGURE 2.6.3**  
**FOURTH STREET**  
**PUMP STATION**  
**MSD0087-PS**  
 342 WEST MAIN STREET  
 LOUISVILLE, KY



**FIGURE 2.6.4**  
**34TH STREET PUMP STATION**  
**MSD0082-PS**  
 816 NORTH 34TH STREET  
 LOUISVILLE, KY



**FIGURE 2.6.5**  
**NORTHERN DITCH**  
**PUMP STATION**  
**MSD0015-PS**  
341 MAC BRAE RD  
LOUISVILLE, KY



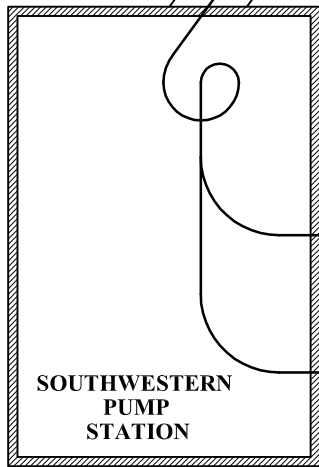
**FIGURE 2.6.6**  
**SOUTHWESTERN PUMP STATION**  
**MSD0080-PS**  
4010 BELLS LN  
LOUISVILLE, KY

TO THE OHIO RIVER  
(Normal Pool Elev. 383.00)

SOUTHWESTERN BRANCH  
INTERCEPTOR  
72" CIRCULAR

TO MORRIS FORMAN  
WASTEWATER  
TREATMENT PLANT

GATE STRUCTURE  
(Closed at River Elev. 400.00)  
(Opened at River Elev. 417.00)



DIVERSION DAM  
CS0015  
(Dam Crest at Elev. 400.00)

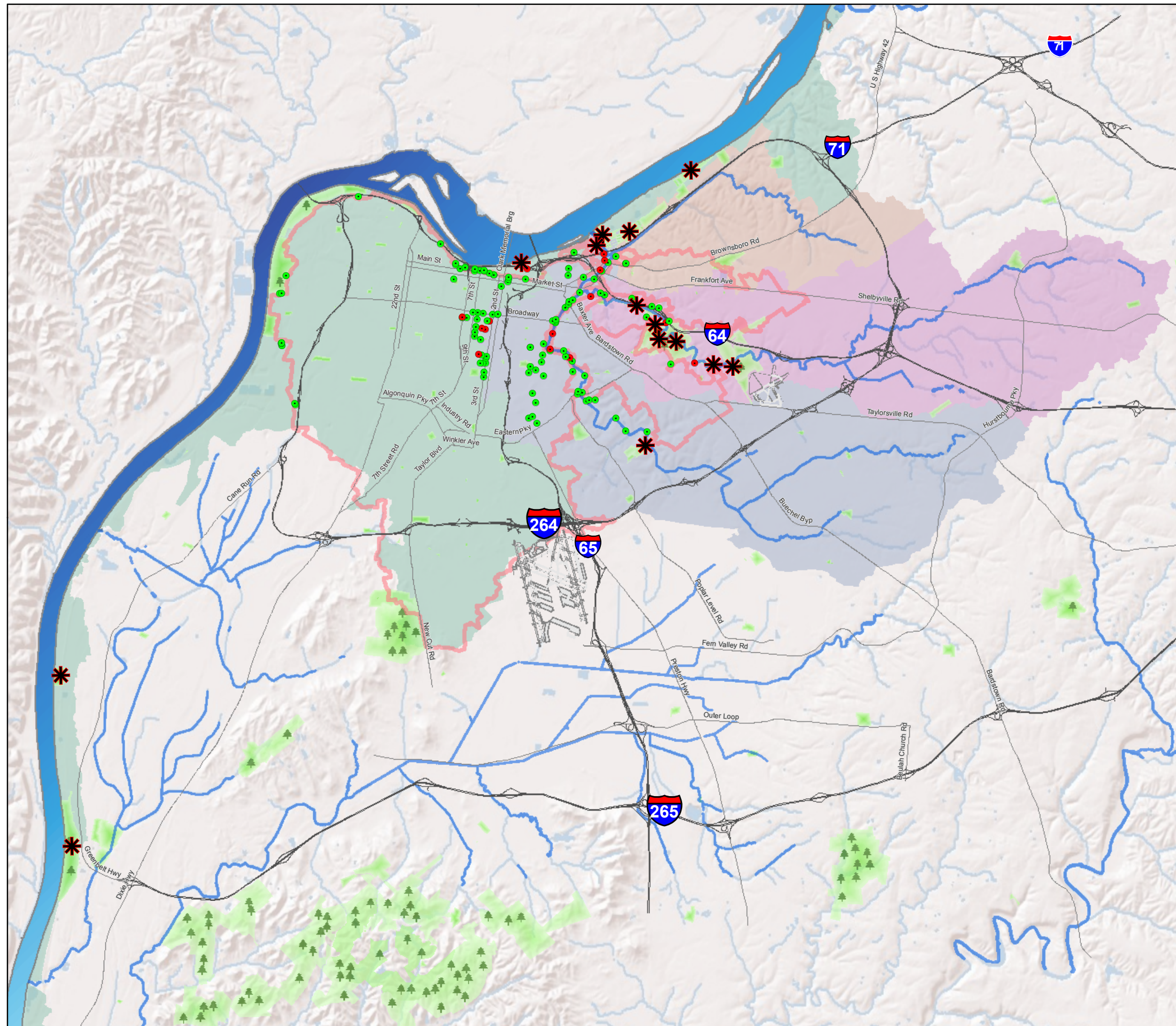
SOUTHWESTERN OUTFALL  
18'-4" X 27'-6" INVERTED EGG















**Integrated Overflow Abatement Plan**

**Vol. 2 - Final CSO Long-Term Control Plan**

**FIGURE 2.7.1  
RECREATIONAL USE  
SURVEY SITES**



**LEGEND**

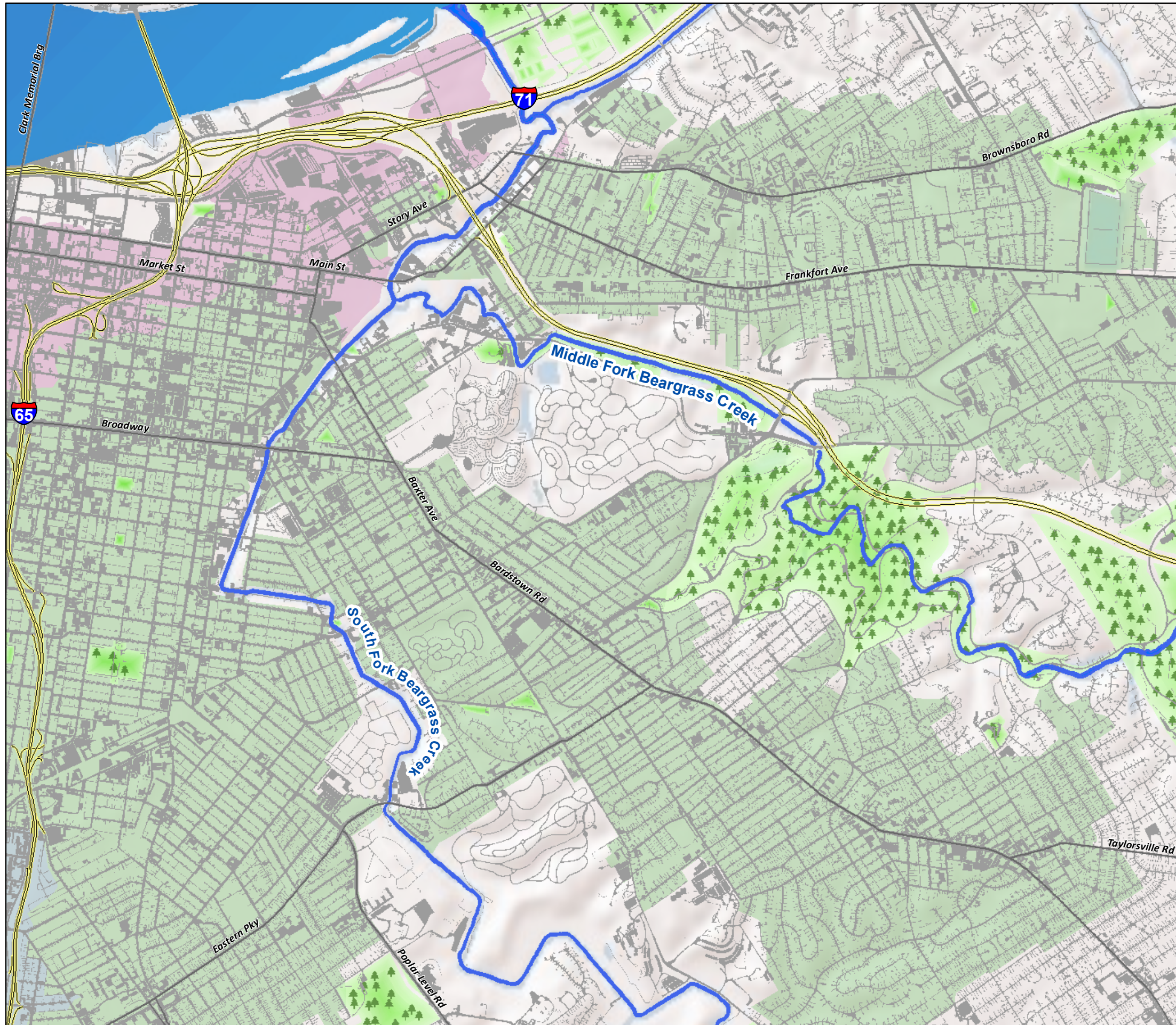
-  Recreational Use Survey Location
-  Active CSO Location
-  Eliminated CSO Location
-  Interstate
-  Major Road
- Watershed Boundary:
  -  Ohio River
  -  Middle Fork Beargrass Creek
  -  Muddy Fork Beargrass Creek
  -  South Fork Beargrass Creek
  -  CSO General Boundary
  -  Metro Park
  -  Water Feature



Copyright © 2008 LOUISVILLE AND JEFFERSON COUNTY METROPOLITAN SEWER DISTRICT (MSD), LOUISVILLE WATER COMPANY, LOUISVILLE METRO GOVERNMENT, and JEFFERSON COUNTY PROPERTY VALUATION ADMINISTRATOR (PVA). All Rights Reserved.

**Integrated Overflow Abatement Plan  
Vol. 2 - Final CSO Long-Term Control Plan**

**FIGURE 2.8.1  
PAVED SURFACES AROUND  
BEARGRASS CREEK**



**LEGEND**

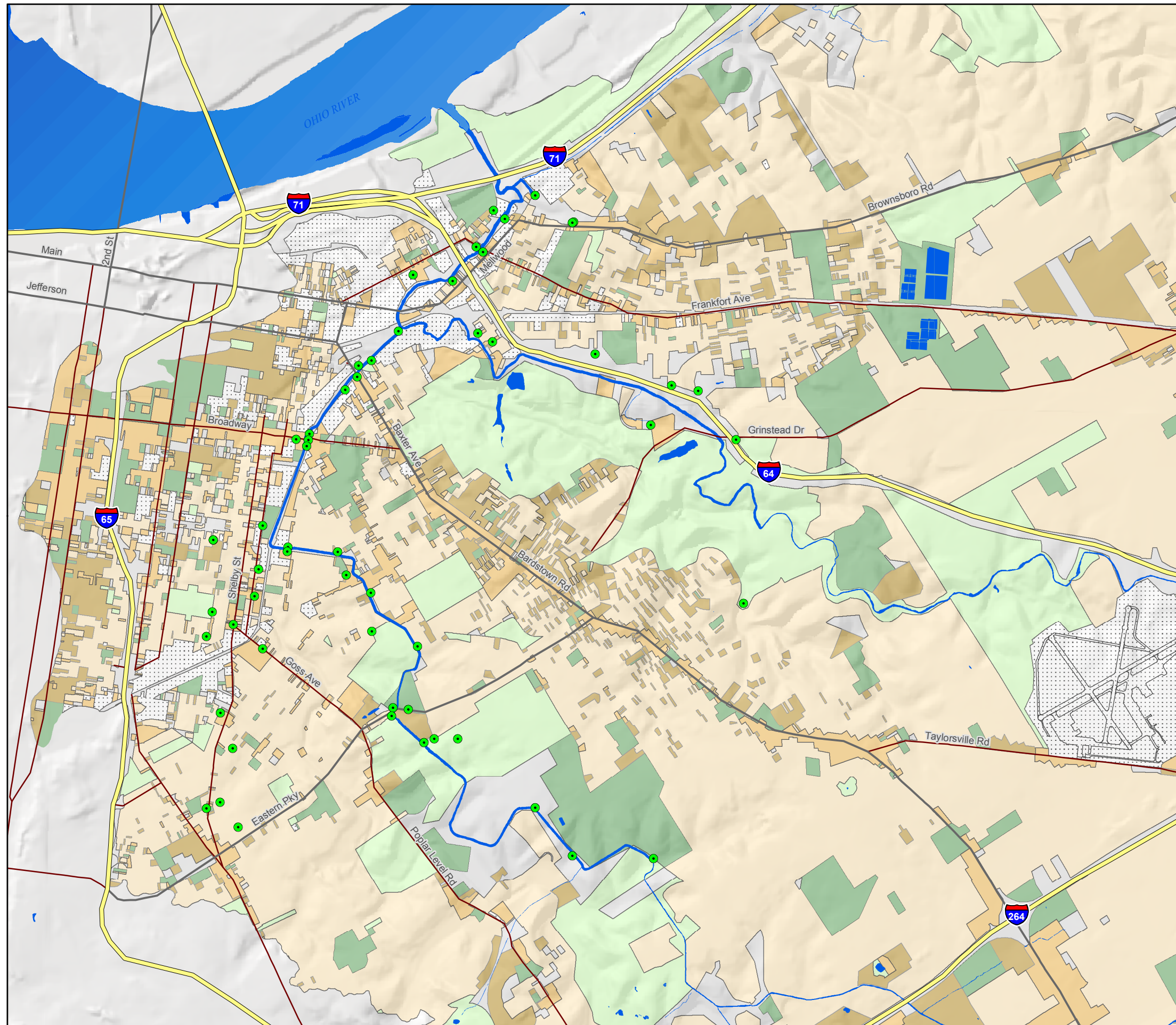
- Interstate
- Major Arterial Street
- Paved Surface
- Regional Boundaries
  - Beargrass Creek
  - Ohio River North
  - Ohio River West
- Metro Park
- Water Feature



Copyright © 2008 LOUISVILLE AND JEFFERSON COUNTY METROPOLITAN SEWER DISTRICT (MSD), LOUISVILLE WATER COMPANY, LOUISVILLE METRO GOVERNMENT, and JEFFERSON COUNTY PROPERTY VALUATION ADMINISTRATOR (PVA). All Rights Reserved.

**Integrated Overflow Abatement Plan  
Vol. 2 - Final CSO Long-Term Control Plan**

**FIGURE 2.8.4  
BEARGRASS CREEK  
LAND USE**



**LEGEND**

- CSO
- Interstate
- Highway
- Major Road
- Parks, Cemeteries, etc.
- Public and Semi-Public
- Single Family Residential
- Multi-Family Residential
- General Commercial and Office
- Industrial
- Vacant and Undeveloped
- Water Feature

NOTE: Land use data were created by Louisville Metro Planning and Design Services in 2005.

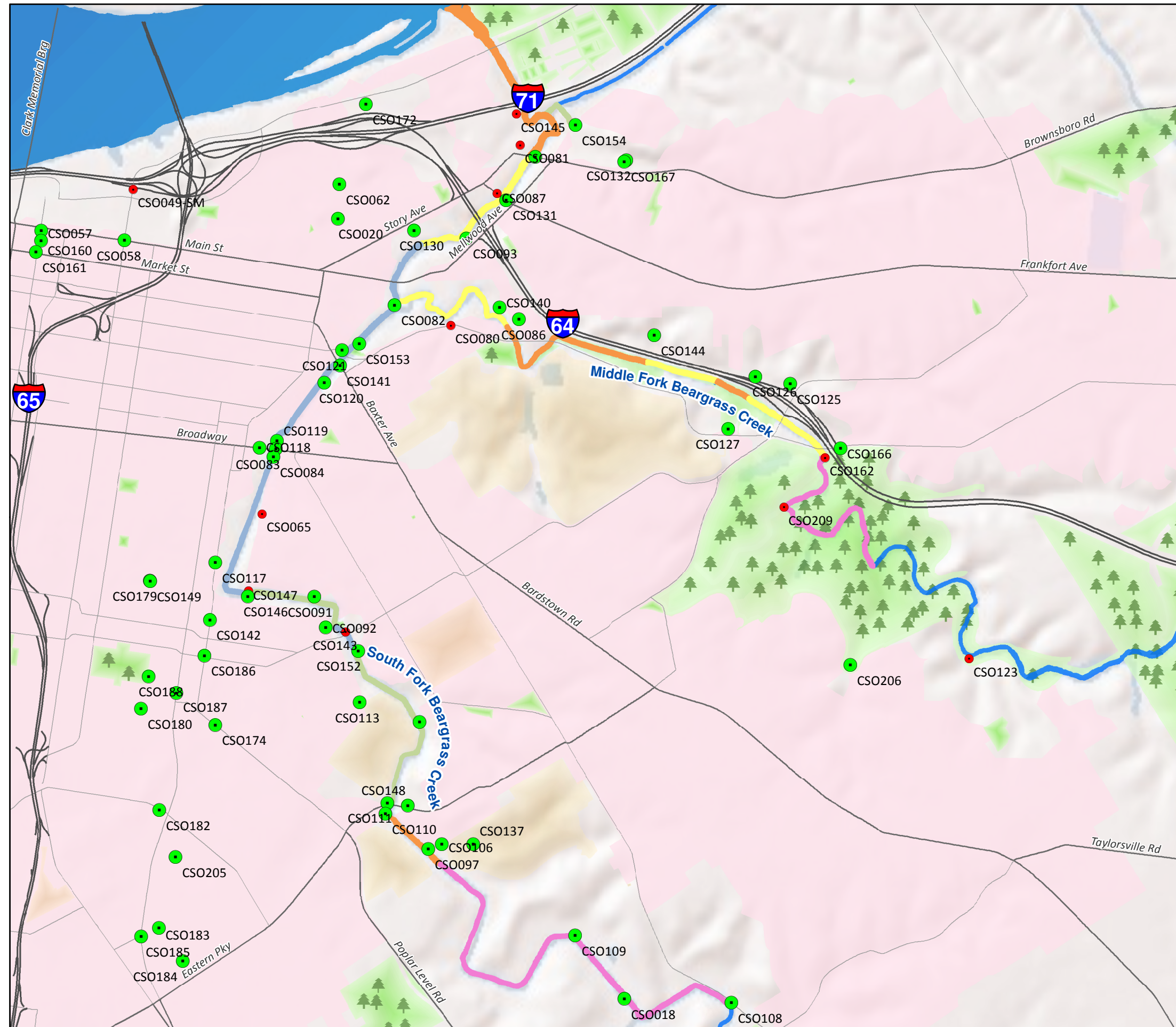


Copyright © 2008 LOUISVILLE AND JEFFERSON COUNTY METROPOLITAN SEWER DISTRICT (MSD), LOUISVILLE WATER COMPANY, LOUISVILLE METRO GOVERNMENT, and JEFFERSON COUNTY PROPERTY VALUATION ADMINISTRATOR (PVA). All Rights Reserved.

Integrated Overflow Abatement Plan

Vol. 2 - Final CSO Long-Term Control Plan

FIGURE 2.8.6  
DISTRIBUTION OF  
STREAM PRIORITY RATING



LEGEND

- Active CSO Location
- Eliminated CSO Location
- Interstate
- Major Arterial Street
- Minor Arterial Street
- Stream Priority Rating
  - Lowest
  - Medium / Low
  - Medium
  - High / Medium
  - Highest
  - Stream Segment Not Evaluated
- CSO Boundary
- Metro Park
- Cemetery

Revision Date: August 7, 2009



Copyright © 2008 LOUISVILLE AND JEFFERSON COUNTY METROPOLITAN SEWER DISTRICT (MSD), LOUISVILLE WATER COMPANY, LOUISVILLE METRO GOVERNMENT, and JEFFERSON COUNTY PROPERTY VALUATION ADMINISTRATOR (PVA). All Rights Reserved.