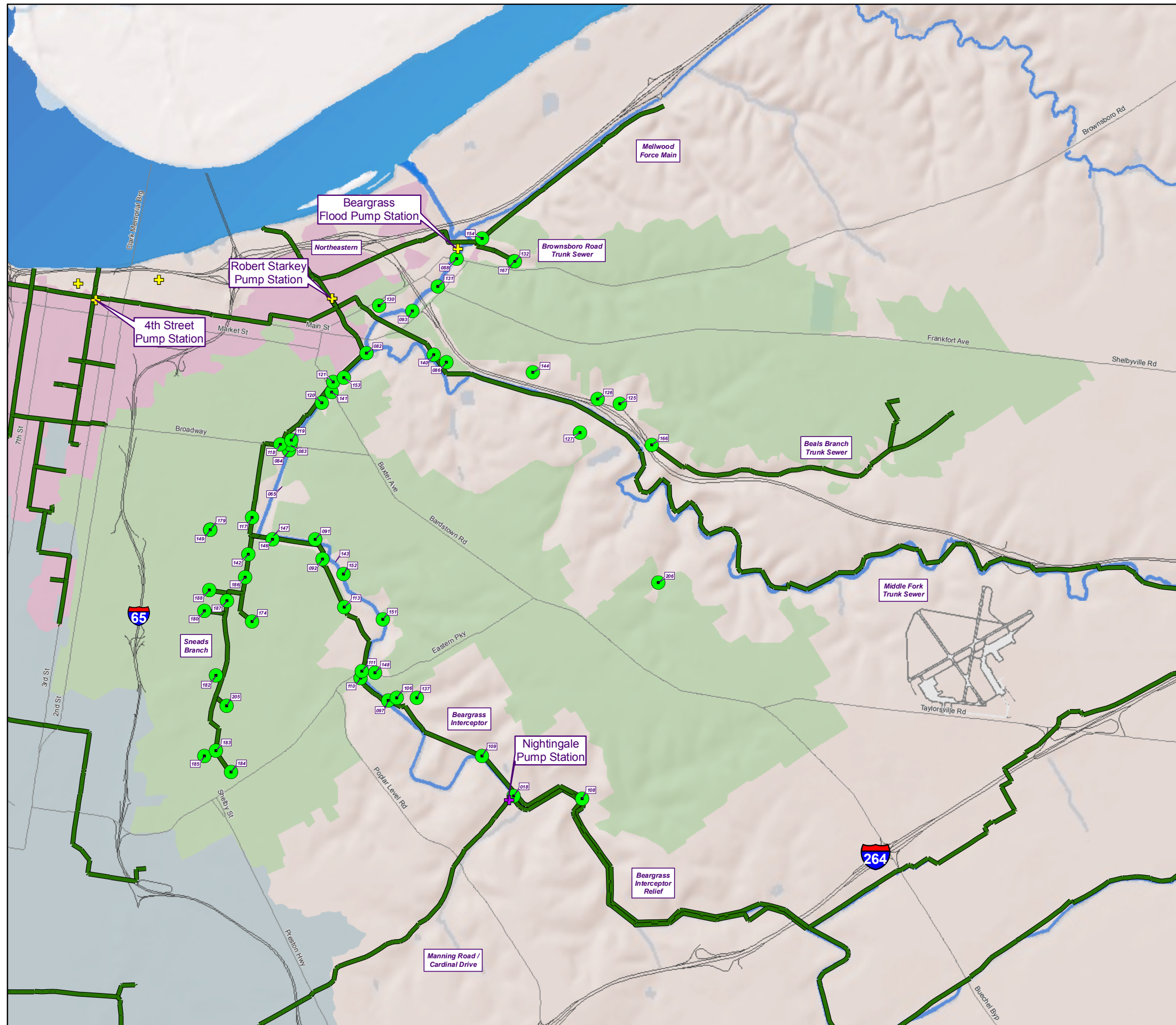


**Integrated Overflow Abatement Plan**

**Vol. 2 - Final CSO Long-Term Control Plan**

**FIGURE 2.5.1  
BEARGRASS CREEK  
REGION**



**LEGEND**

- Active CSO Location
- + Flood Pump Station
- + Sanitary Pump Station
- Major Sewer Line
- Interstate
- Major Road
- Regional Boundaries
  - Beargrass Creek
  - Ohio River North
  - Ohio River West
  - Morris Forman Service Area
  - Water Feature



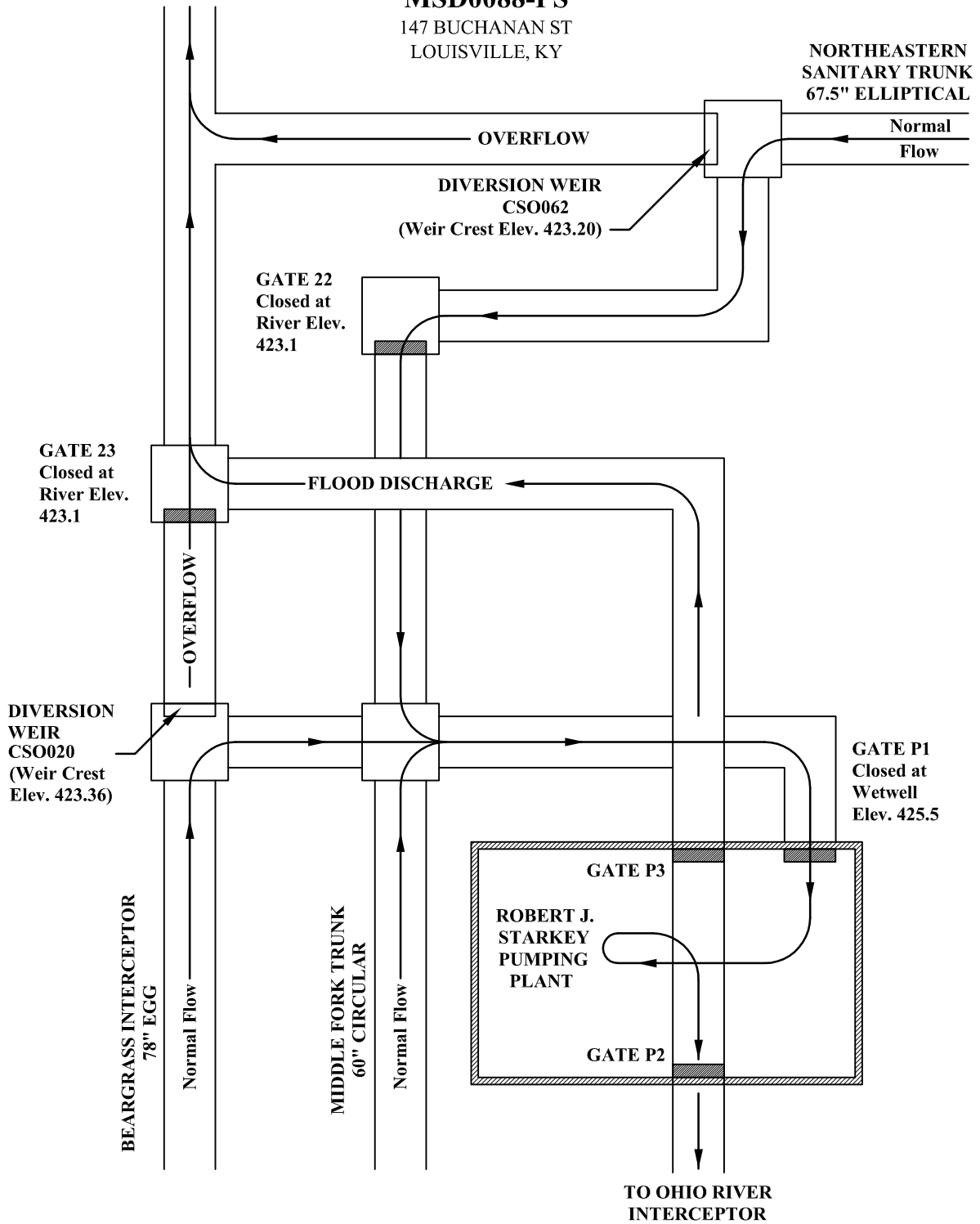
Copyright © 2008 LOUISVILLE AND JEFFERSON COUNTY METROPOLITAN SEWER DISTRICT (MSD), LOUISVILLE WATER COMPANY, LOUISVILLE METRO GOVERNMENT, and JEFFERSON COUNTY PROPERTY VALUATION ADMINISTRATOR (PVA). All Rights Reserved.

**FIGURE 2.5.2**  
**ROBERT J. STARKEY**  
**PUMPING PLANT**  
**MSD0088-PS**

147 BUCHANAN ST  
 LOUISVILLE, KY

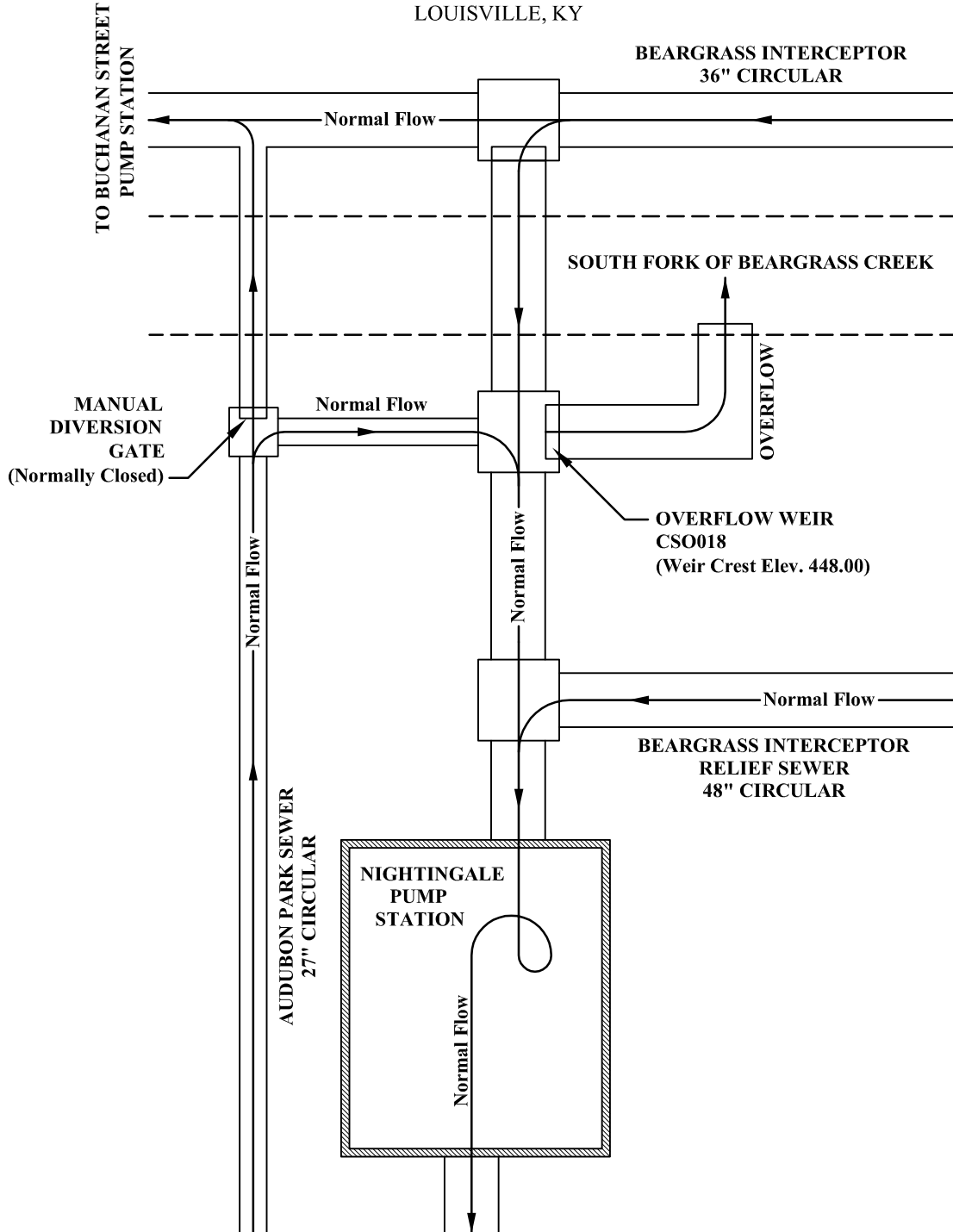
TO OHIO RIVER  
 (Normal Pool Elev. 420.00)

NORTHEASTERN  
 SANITARY TRUNK  
 67.5" ELLIPTICAL



**FIGURE 2.5.3  
NIGHTINGALE  
PUMP STATION  
MSD0022-PS**



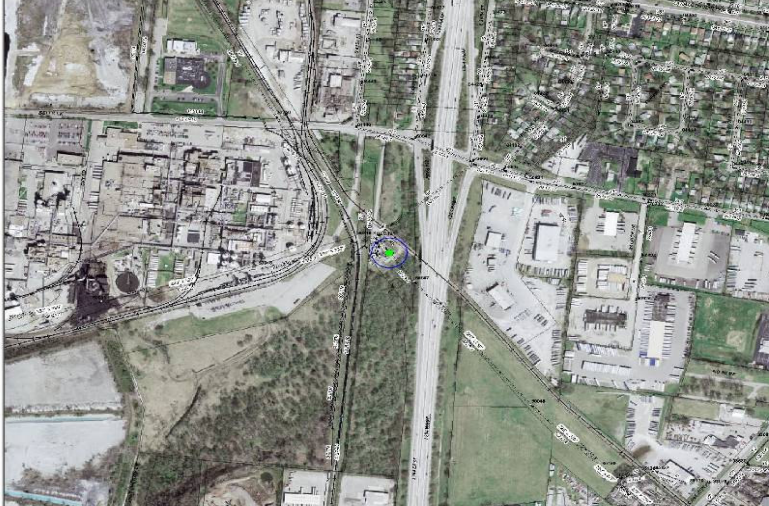
1800 NIGHTINGALE RD  
LOUISVILLE, KY

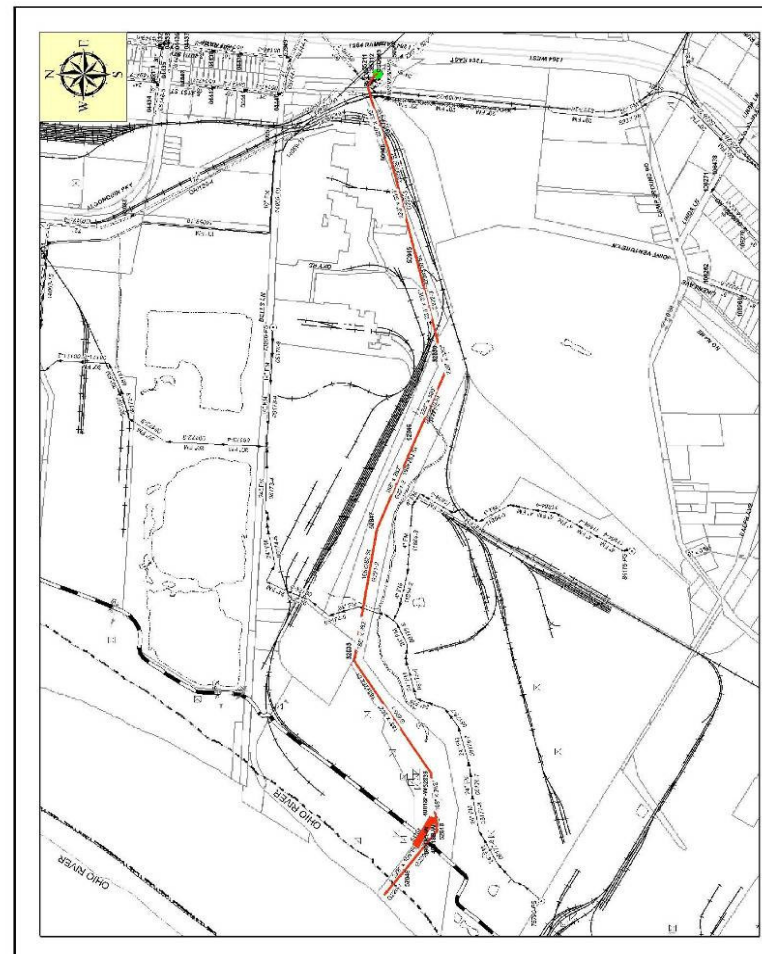



**Integrated Overflow Abatement Program  
Vol 2. Long Term Control Plan**

**FIGURE 2.5.4  
CSO SAMPLE  
DATA SHEET**

**CSO Inspection Sheets**

 <p><b>MSD</b> Louisville-Jefferson County Metropolitan Sewer District</p>		<p><b>CSO015</b> 4010 BELLS LN Report as of 10/21/2008</p>	
<p>Record#: ORR9-3 MSD Affix: BC212 Map#: MAL17</p>			
		<p><b>Location Map</b></p>	



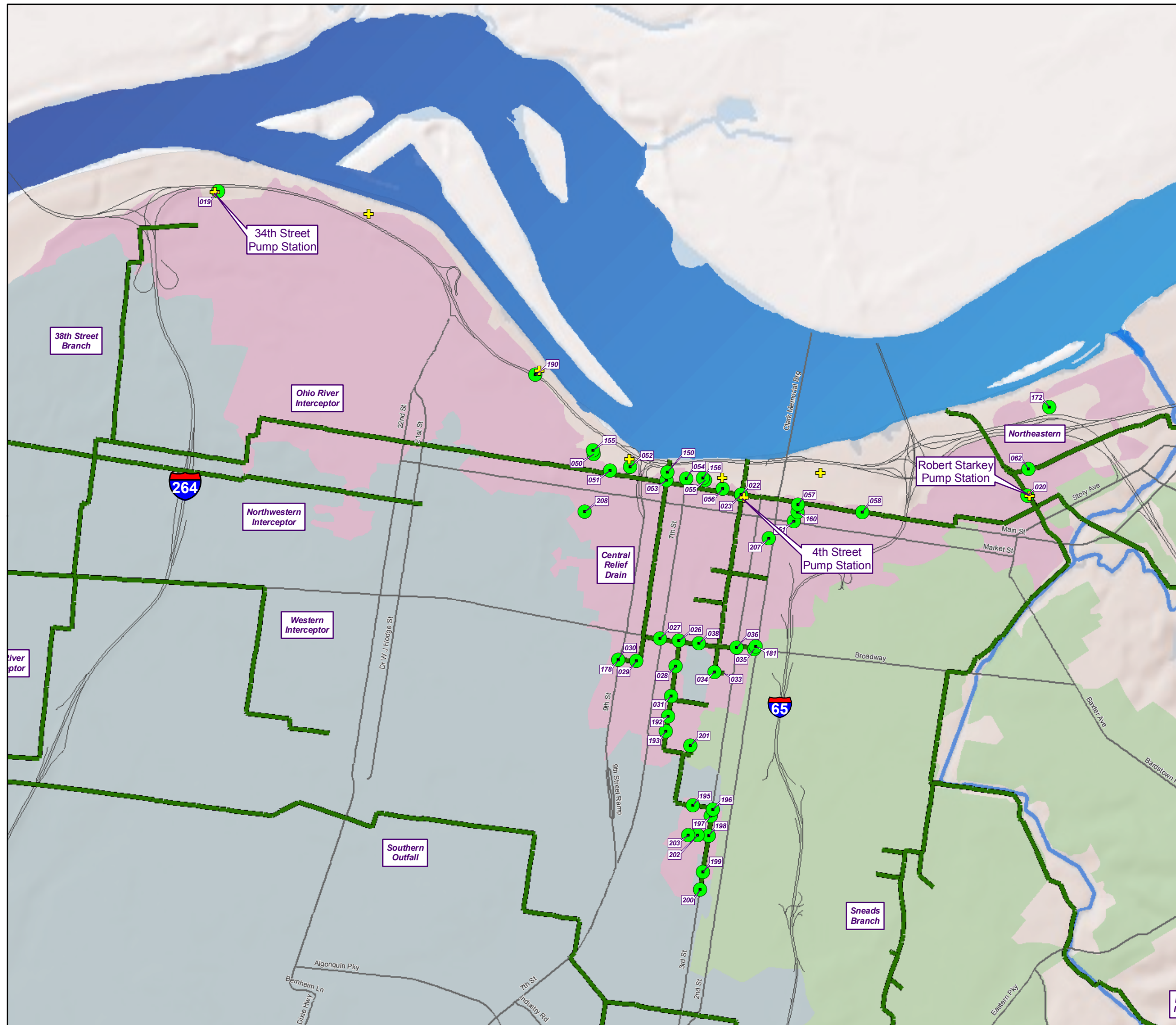
 	
<p><u>CSO 2008 Baseline Characteristics Report</u></p>	
<b>CSO Number:</b>	CSO015
<b>CSO Name:</b>	Southwestern Pump Station
<b>Overflow Type:</b>	Diversion Dam
<b>Solids and floatables Device:</b>	Baffle
<b>Drainage Area (Acres):</b>	7,496.70
<b>Percent Impervious Surfaces:</b>	47.47%
<b>Receiving Stream:</b>	Ohio River
<b>General Location:</b>	Ohio River West
<b>2008 AAOV (in MG / Yr):</b>	494.56
<b>Number of Overflow Incidents (in Number / Yr):</b>	61
<b>Average Duration of Overflow (in Hours):</b>	7.23
<b>Average Volume per Incident (in 1000 G / Incident):</b>	8,107.52
<b>Residential Landuse:</b>	50.91%
<b>Commercial Landuse:</b>	10.34%
<b>Industrial Landuse:</b>	16.68%
<b>Parks:</b>	2.47%
<b>Vacant Property:</b>	11.03%
<b>Population Estimate:</b>	51,487
<p><small>Based on LOIC data as of June 2008 and InfoWorks Version 8 baseline characteristics. CSOs listed having 0.00 Drainage Areas serve as system relief points. While a CSO may display 0.00 AAOV, note that this is based on typical year rainfall data.</small></p>	
<p><small>Monday, October 20, 2008 <span style="float: right;">Page 1 of 1</span></small></p>	



**Integrated Overflow Abatement Plan**

**Vol. 2 - Final CSO Long-Term Control Plan**

**FIGURE 2.6.1  
OHIO RIVER NORTH  
REGION**



**LEGEND**

- Active CSO Location
- + Flood Pump Station
- + Sanitary Pump Station
- Major Sewer Line
- Interstate
- Major Road
- Regional Boundaries
  - Beargrass Creek
  - Ohio River North
  - Ohio River West
  - Morris Forman Service Area
  - Water Feature

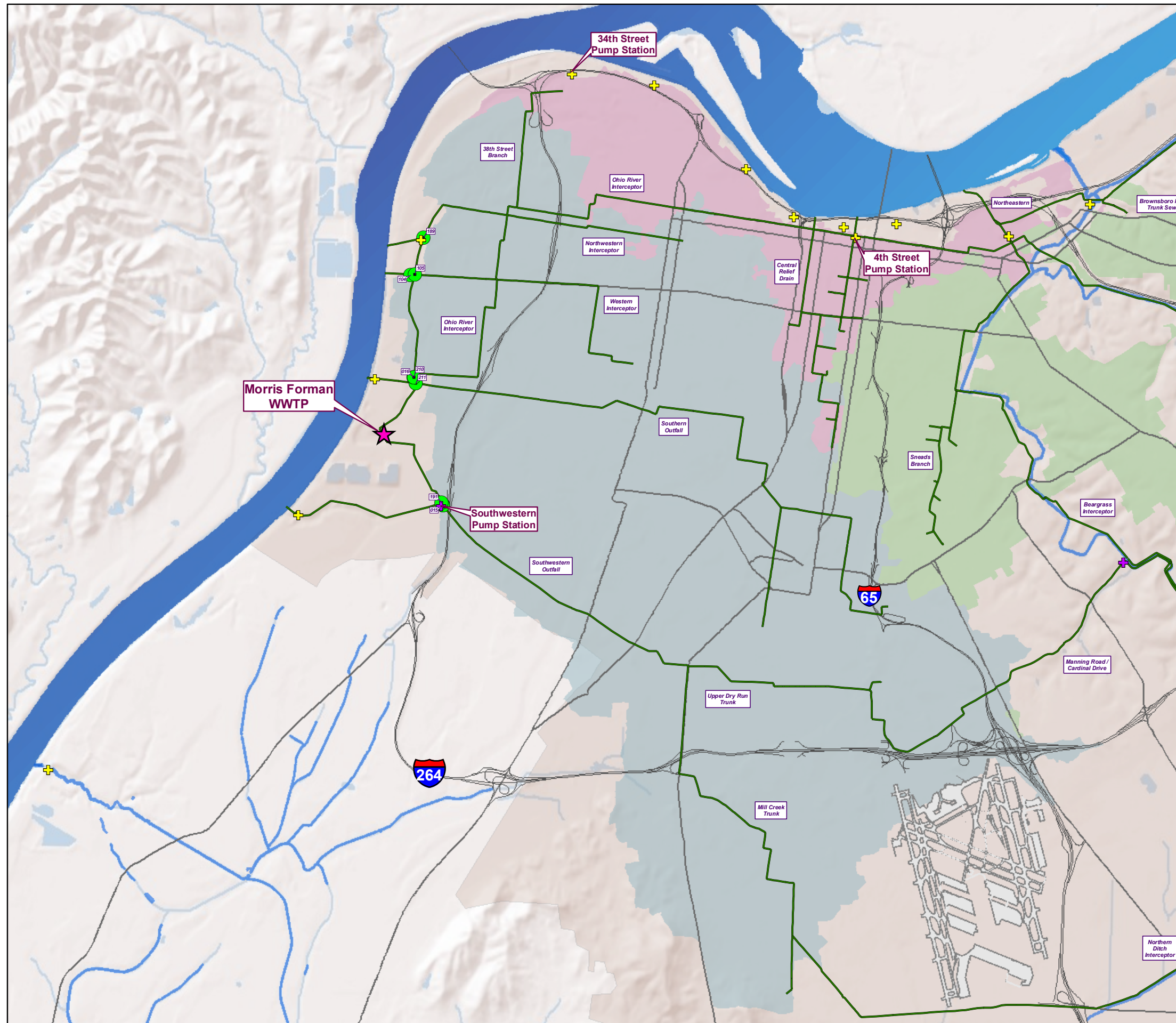


Copyright © 2008 LOUISVILLE AND JEFFERSON COUNTY METROPOLITAN SEWER DISTRICT (MSD), LOUISVILLE WATER COMPANY, LOUISVILLE METRO GOVERNMENT, and JEFFERSON COUNTY PROPERTY VALUATION ADMINISTRATOR (PVA). All Rights Reserved.

**Integrated Overflow Abatement Plan**

**Vol. 2 - Final CSO Long-Term Control Plan**

**FIGURE 2.6.2  
OHIO RIVER WEST  
REGION**



**LEGEND**

- Active CSO Location
- + Flood Pump Station
- + Sanitary Pump Station
- ★ Wastewater Treatment Plant
- Major Sewer Line
- Interstate
- Major Road
- Regional Boundaries
- Beargrass Creek
- Ohio River North
- Ohio River West
- Morris Forman Service Area
- Water Feature



Copyright © 2008 LOUISVILLE AND JEFFERSON COUNTY METROPOLITAN SEWER DISTRICT (MSD), LOUISVILLE WATER COMPANY, LOUISVILLE METRO GOVERNMENT, and JEFFERSON COUNTY PROPERTY VALUATION ADMINISTRATOR (PVA). All Rights Reserved.