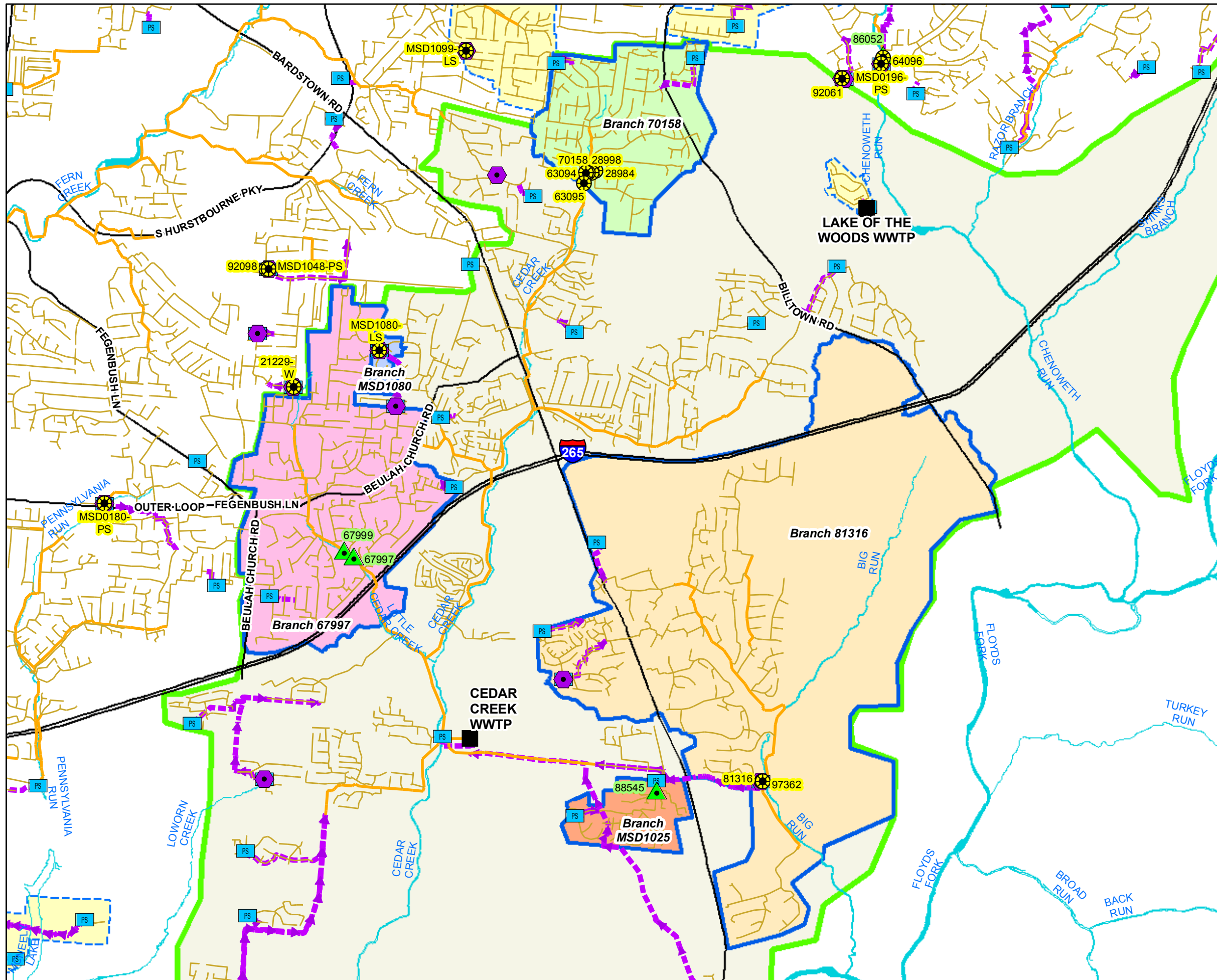


**Integrated Overflow Abatement Plan
Vol. 3 Sanitary Sewer Discharge Plan**

**Cedar Creek Sewershed
Branch Network
Figure 2.5.3**



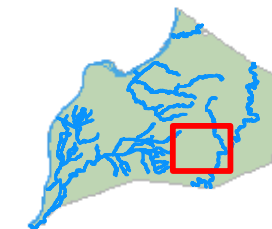
Legend

- Documented SSO
- Suspected SSO
- Haul Operation
- WWTP
- Pump Station
- Force Main
- Collector < 12"
- Interceptor ≥ 12"
- Major Road
- Streams
- CSO Area
- Small WWTP Service Area
- Large WWTP Service Area
- Branch 67997
- Branch 70158
- Branch 81316
- Branch MSD1080
- Branch MSD1025
- County Boundary

1 inch = 2,800 feet
Scalable when printed on 11" X 17" paper

Some boundaries are uniquely symbolized within the map.

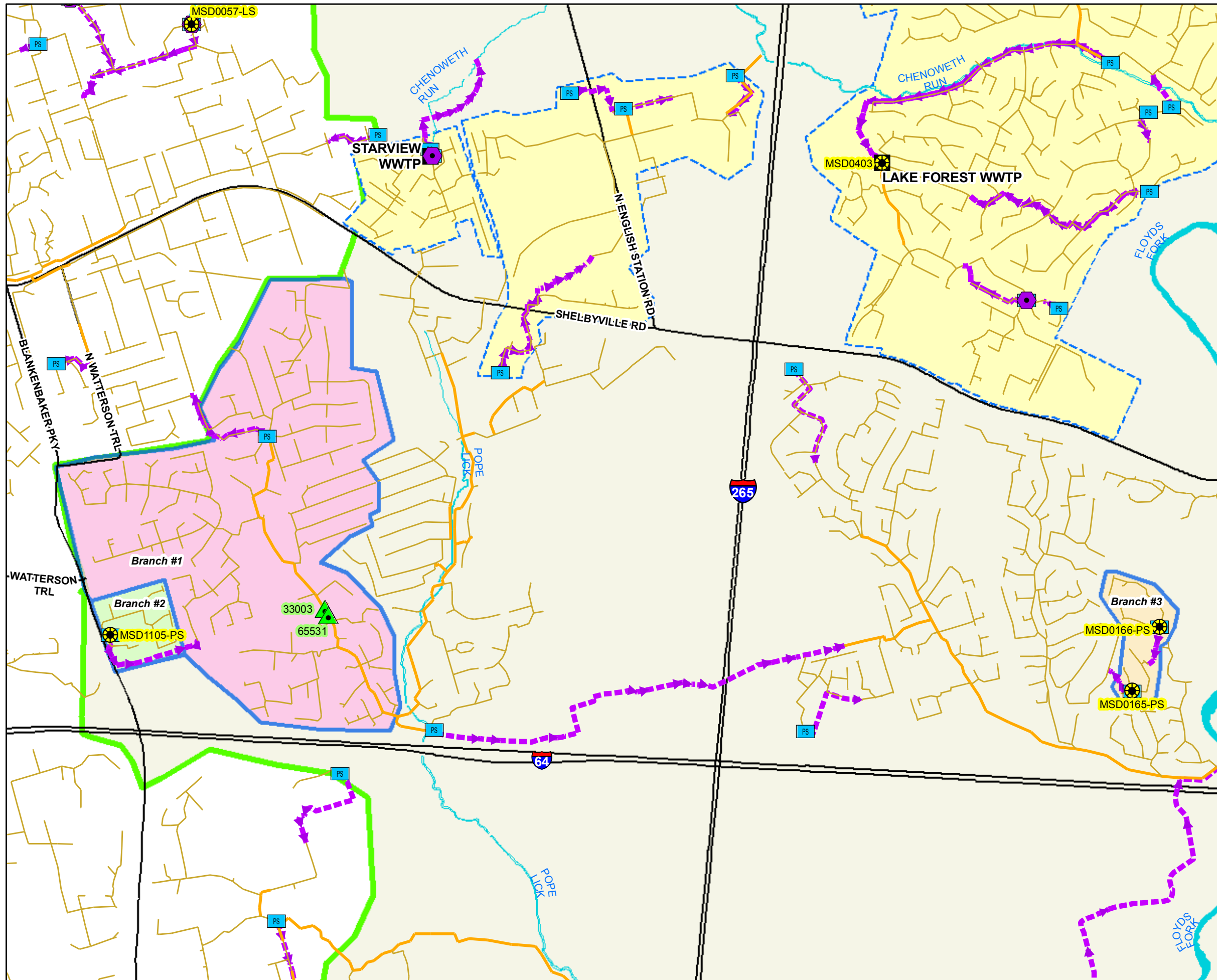
Map Revision
May 07, 2009



Copyright © 2008 LOUISVILLE AND JEFFERSON COUNTY METROPOLITAN SEWER DISTRICT (MSD), LOUISVILLE WATER COMPANY, LOUISVILLE METRO GOVERNMENT, and JEFFERSON COUNTY PROPERTY VALUATION ADMINISTRATOR (PVA). All Rights Reserved.

**Integrated Overflow Abatement Plan
Vol. 3 Sanitary Sewer Discharge Plan**

**Floyds Fork Sewershed
Branch Network
Figure 2.5.4**



- Legend**
- Documented SSO
 - Suspected SSO
 - Haul Operation
 - WWTP
 - Pump Station
 - Force Main
 - Collector < 12"
 - Interceptor =>12"
 - Major Road
 - Streams
 - CSO Area
 - Small WWTP Service Area
 - Large WWTP Service Area
 - Branch #1
 - Branch #2
 - Branch #3
 - County Boundary

1 inch = 1,600 feet
Scalable when printed on 11" X 17" paper



Some boundaries are uniquely symbolized within the map.
Map Revision
May 07, 2009

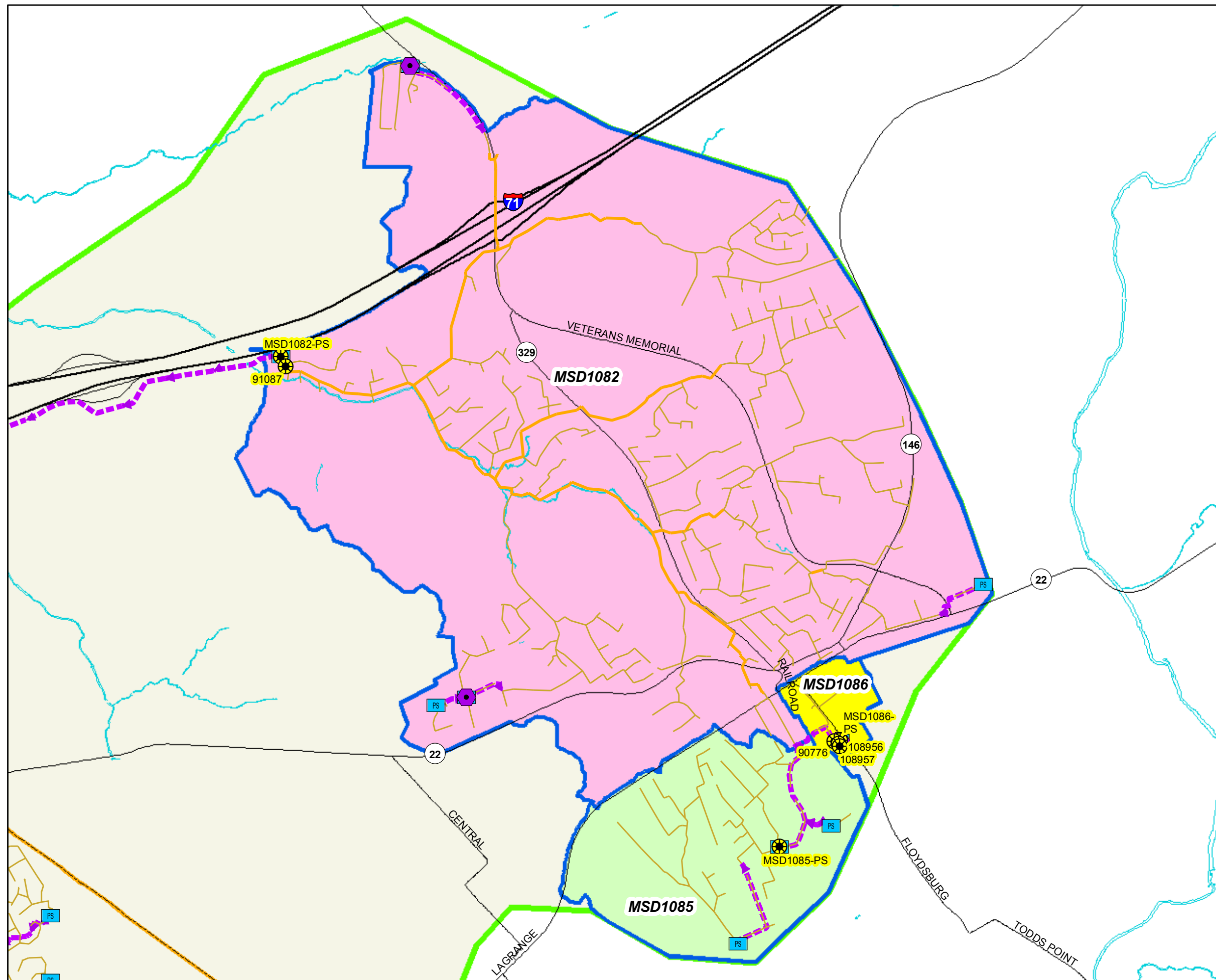


Copyright © 2008 LOUISVILLE AND JEFFERSON COUNTY METROPOLITAN SEWER DISTRICT (MSD), LOUISVILLE WATER COMPANY, LOUISVILLE METRO GOVERNMENT, and JEFFERSON COUNTY PROPERTY VALUATION ADMINISTRATOR (PVA). All Rights Reserved.

Integrated Overflow Abatement Plan

Vol. 3 Sanitary Sewer Discharge Plan

Hite Creek Sewershed Branch Network Figure 2.5.5



Legend

- ☀ Documented SSO
- ▲ Suspected SSO
- ⬢ Haul Operation
- WWTP
- PS Pump Station
- ➔ Force Main
- Collector < 12"
- Interceptor =>12"
- Major Road
- ~ Streams
- CSO Area
- Small WWTP Service Area
- Large WWTP Service Area
- Branch MSD1085
- Branch MSD1086
- Branch MSD1082
- County Boundary

1 inch = 1,800 feet
Scalable when printed on 11" X 17" paper



Some boundaries are uniquely symbolized within the map.

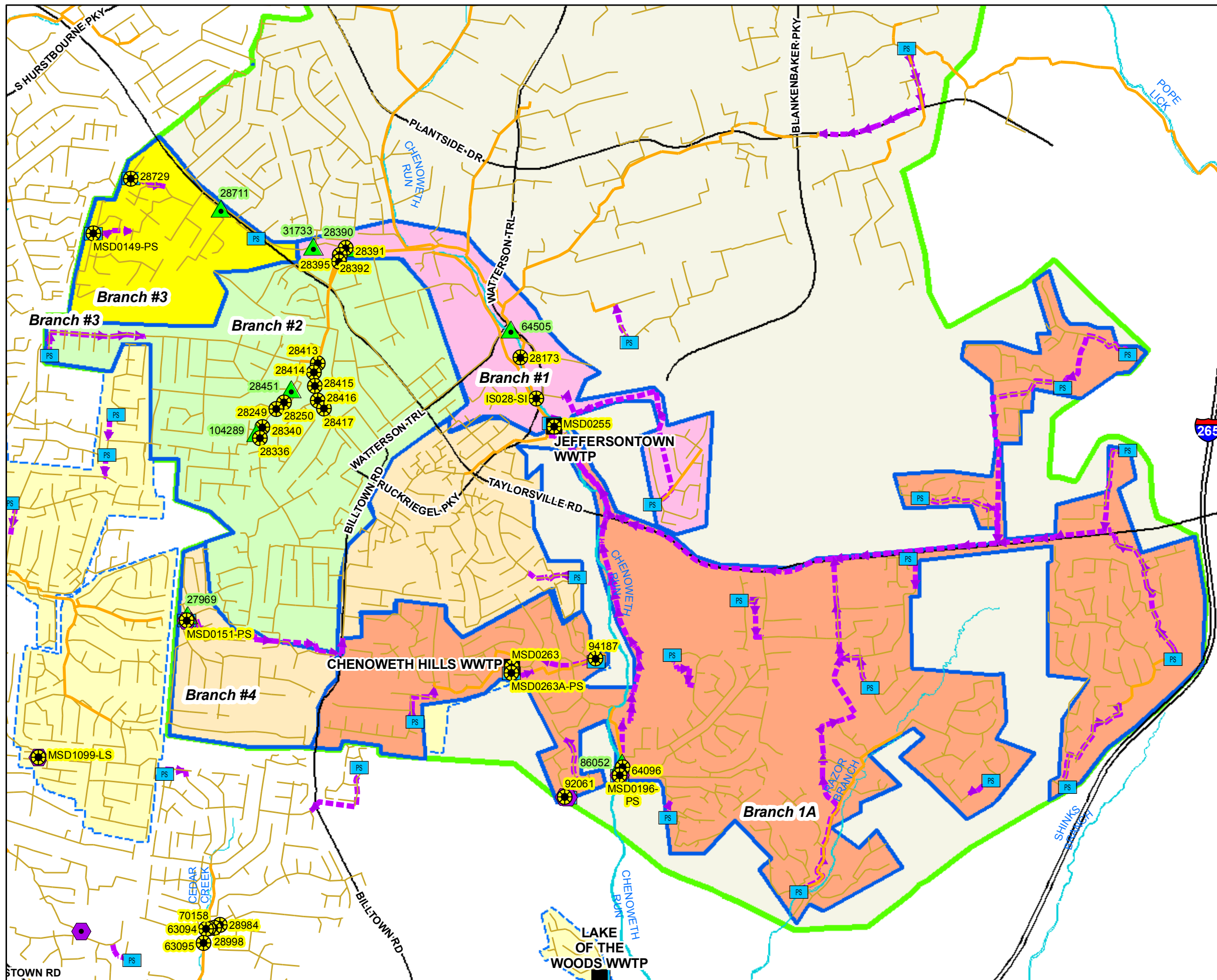
Map Revision
May 07, 2009



Copyright © 2008 LOUISVILLE AND JEFFERSON COUNTY METROPOLITAN SEWER DISTRICT (MSD), LOUISVILLE WATER COMPANY, LOUISVILLE METRO GOVERNMENT, and JEFFERSON COUNTY PROPERTY VALUATION ADMINISTRATOR (PVA). All Rights Reserved.

Integrated Overflow Abatement Plan
Vol. 3 Sanitary Sewer Discharge Plan

Jeffersontown Sewershed
 Branch Network
 Figure 2.5.6



Legend

- Documented SSO
- Suspected SSO
- Haul Operation
- WWTP
- Pump Station
- Force Main
- Collector < 12"
- Interceptor =>12"
- Major Road
- Streams
- CSO Area
- Small WWTP Service Area
- Large WWTP Service Area
- Branch #1
- Branch #2
- Branch #3
- Branch #4
- Branch 1A
- County Boundary

1 inch = 2,000 feet
 Scalable when printed on 11" X 17" paper

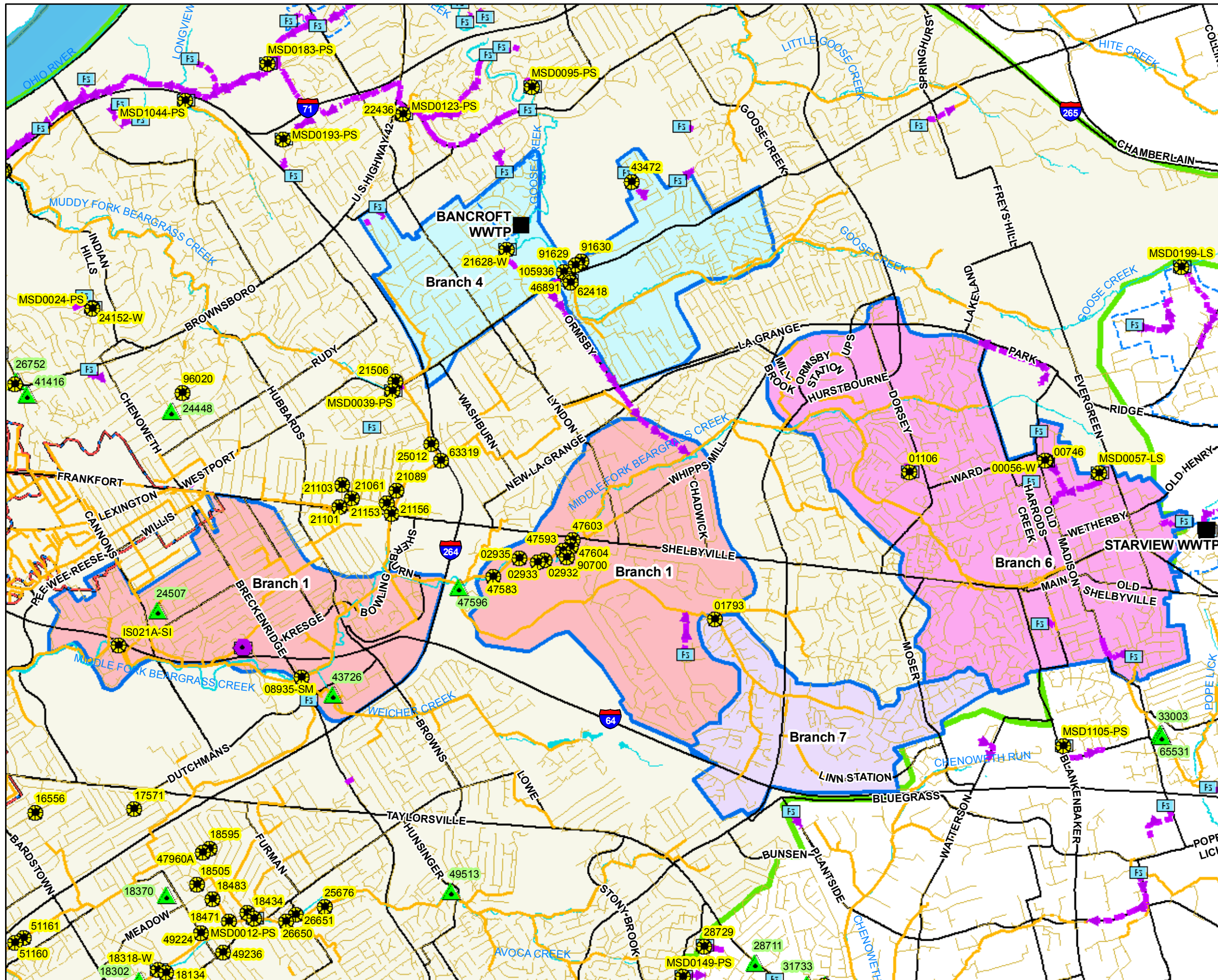


Some boundaries are uniquely symbolized within the map.
 Map Revision
 May 07, 2009



Copyright © 2008 LOUISVILLE AND JEFFERSON COUNTY METROPOLITAN SEWER DISTRICT (MSD), LOUISVILLE WATER COMPANY, LOUISVILLE METRO GOVERNMENT, and JEFFERSON COUNTY PROPERTY VALUATION ADMINISTRATOR (PVA). All Rights Reserved.

Integrated Overflow Abatement Plan
Vol. 3 - Sanitary Sewer Discharge Plan
Morris Forman Sewershed
Middle Fork
Branch Network
Figure 2.5.7



Legend

- Documented SSO
- Suspected SSO
- Haul Operation
- WWTP
- Pump Station
- Force Main
- Collector < 12"
- Interceptor =>12"
- Streams
- Interstates
- Small WWTP Service Area
- Large WWTP Service Area
- CSO Area
- Branch 1
- Branch 4
- Branch 6
- Branch 7
- County Boundary

1 inch equals 3,600 feet
 Scalable when printed on 11" X 17" paper

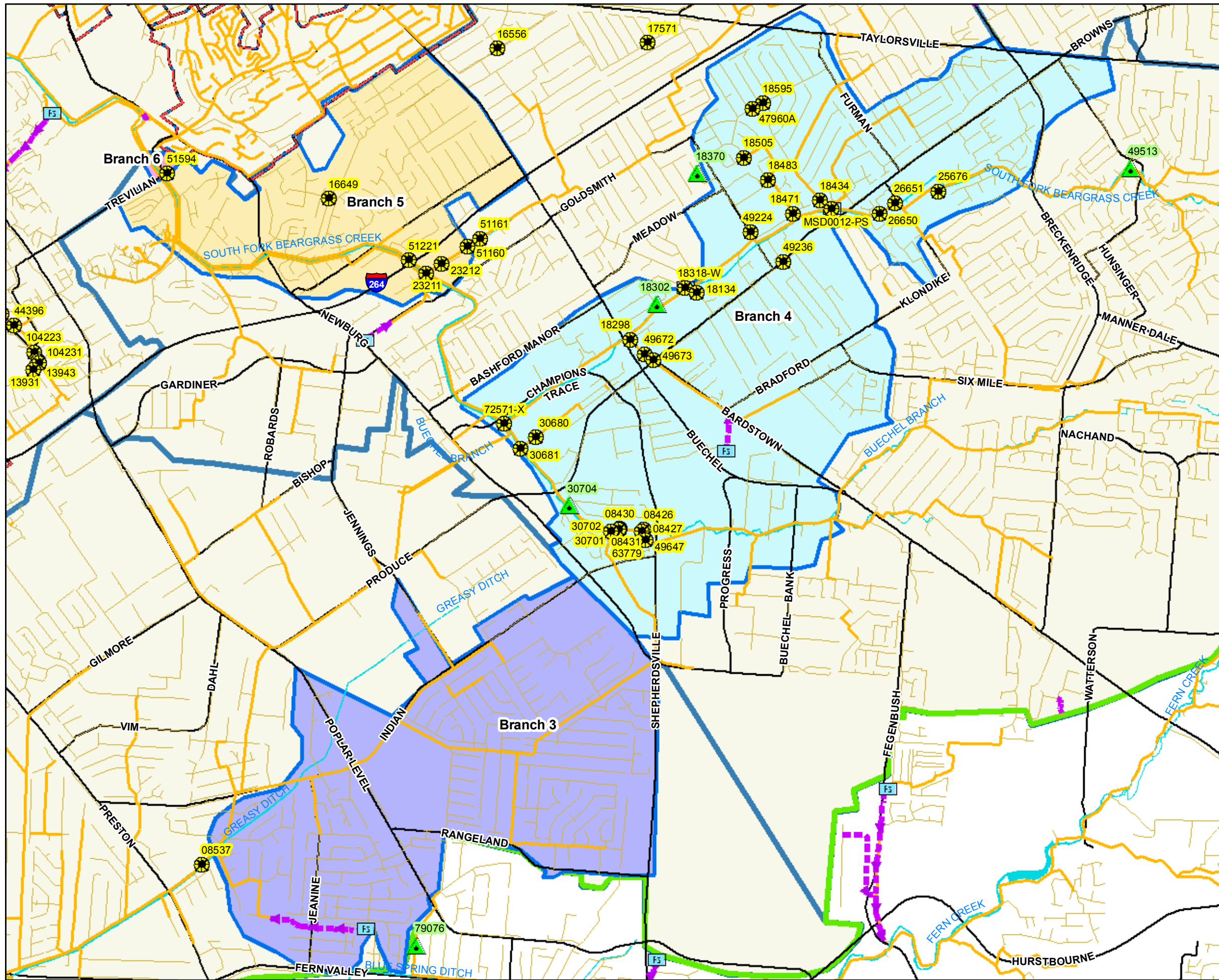


Some boundaries are uniquely symbolized within the map.
 Map Revision
 May 7, 2009



Copyright © 2008 LOUISVILLE AND JEFFERSON COUNTY METROPOLITAN SEWER DISTRICT (MSD), LOUISVILLE WATER COMPANY, LOUISVILLE METRO GOVERNMENT, and JEFFERSON COUNTY PROPERTY VALUATION ADMINISTRATOR (PVA). All Rights Reserved.

Integrated Overflow Abatement Plan
Vol. 3 - Sanitary Sewer Discharge Plan
Morris Forman Sewershed
Southeast Diversion
Branch Network
Figure 2.5.8



Legend

- Documented SSO
- Suspected SSO
- Haul Operation
- WWTP
- Pump Station
- Force Main
- Collector < 12"
- Interceptor =>12"
- Streams
- Interstates
- Small WWTP Service Area
- Large WWTP Service Area
- CSO Area
- Branch 3
- Branch 4
- Branch 5
- Branch 6
- County Boundary

1 inch equals 2,350 feet
 Scalable when printed on 11" X 17" paper

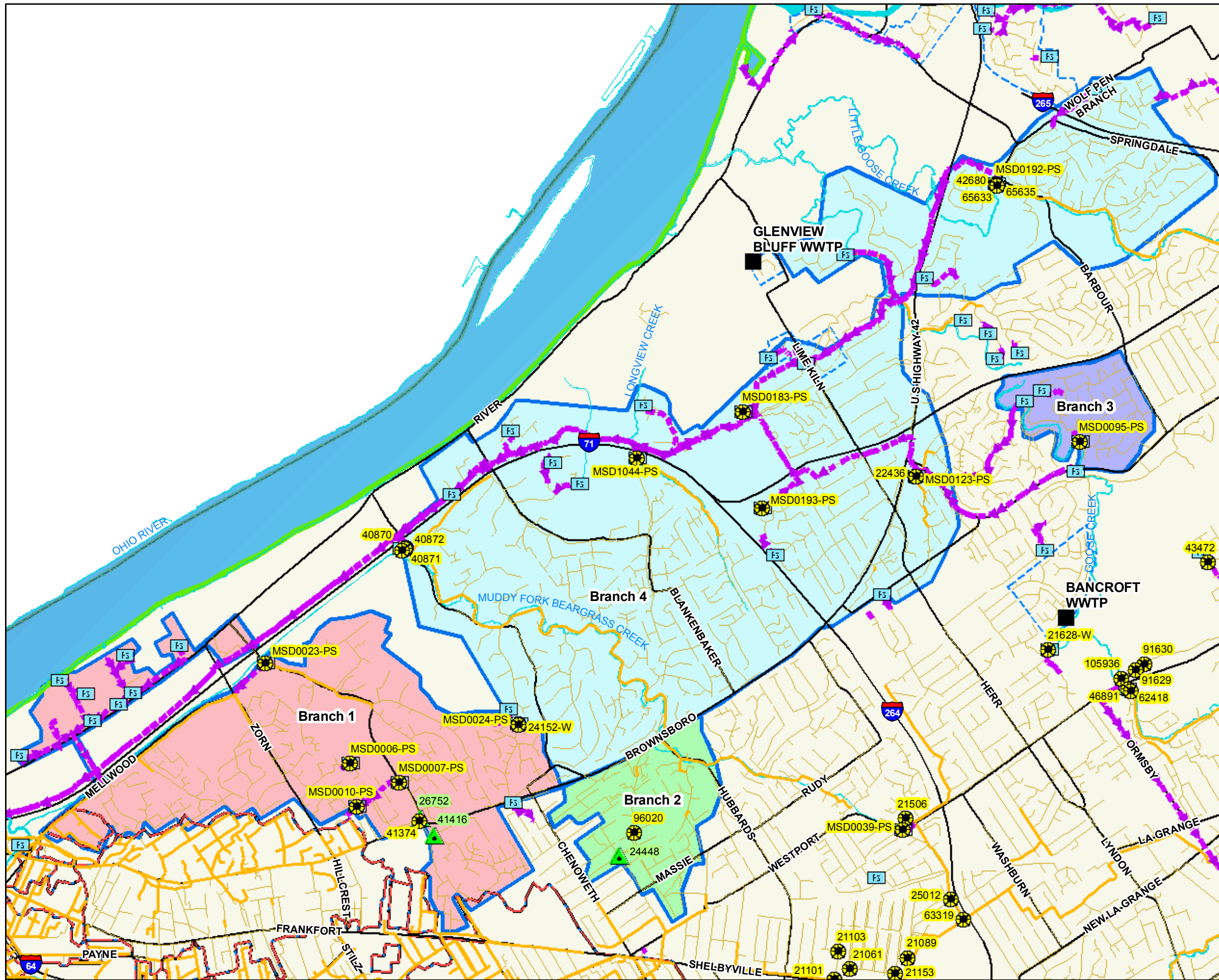


Some boundaries are uniquely symbolized within the map.
 Map Revision
 May 7, 2009



Copyright © 2008 LOUISVILLE AND JEFFERSON COUNTY METROPOLITAN SEWER DISTRICT (MSD), LOUISVILLE WATER COMPANY, LOUISVILLE METRO GOVERNMENT, and JEFFERSON COUNTY PROPERTY VALUATION ADMINISTRATOR (PVA). All Rights Reserved.

Integrated Overflow Abatement Plan
Vol. 3 - Sanitary Sewer Discharge Plan
Morris Forman Sewershed
ORFM
Branch Network
Figure 2.5.9



Legend

- Documented SSO
- Suspected SSO
- Haul Operation
- WWTP
- Pump Station
- Force Main
- Collector < 12"
- Interceptor =>12"
- Streams
- Interstates
- Small WWTP Service Area
- Large WWTP Service Area
- CSO Area
- Branch 1
- Branch 2
- Branch 3
- Branch 4
- County Boundary

1 inch equals 2,800 feet
 Scalable when printed on 11" X 17" paper

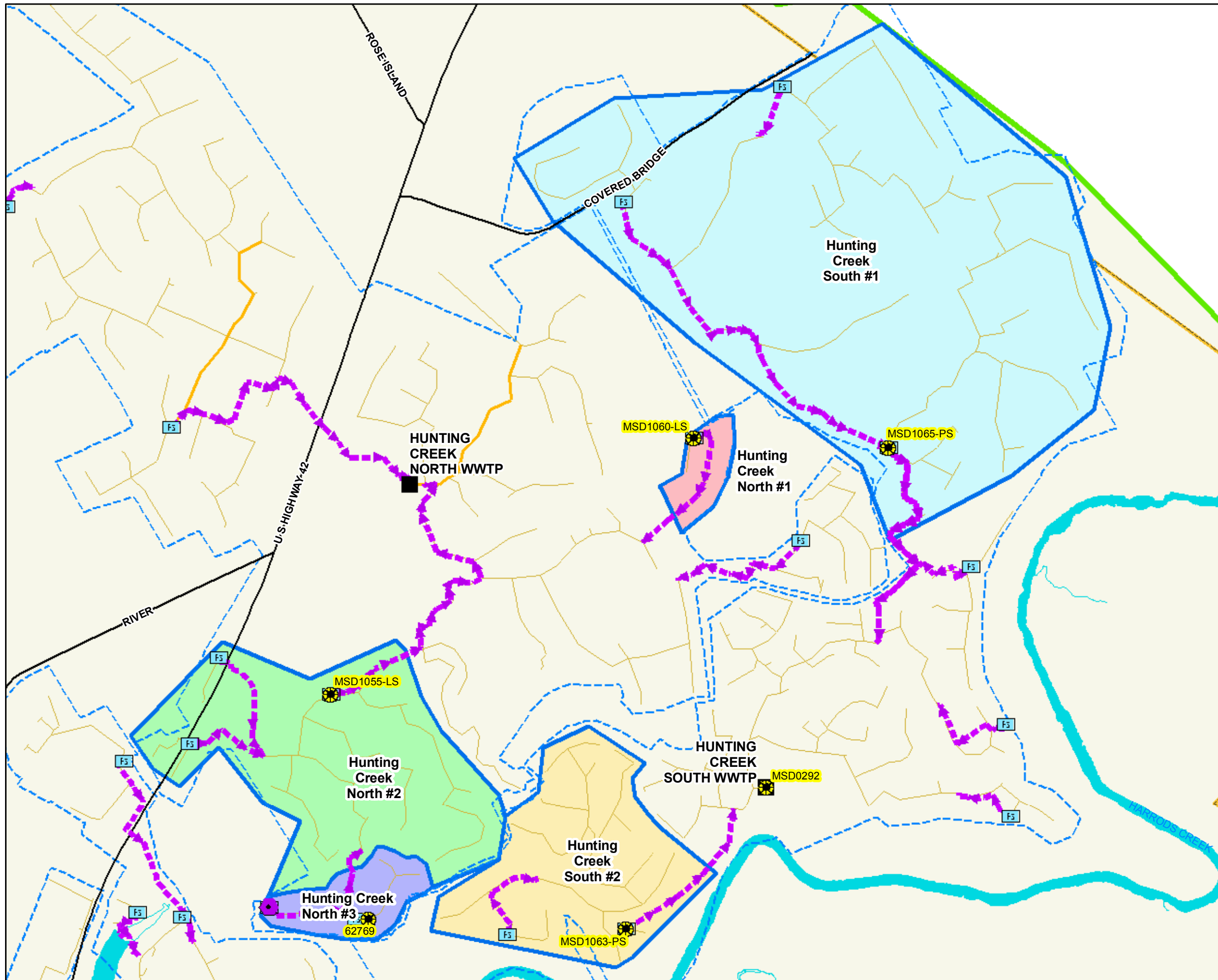


Some boundaries are uniquely symbolized within the map.
 Map Revision
 May 7, 2009



Copyright © 2008 LOUISVILLE AND JEFFERSON COUNTY METROPOLITAN SEWER DISTRICT (MSD), LOUISVILLE WATER COMPANY, LOUISVILLE METRO GOVERNMENT, and JEFFERSON COUNTY PROPERTY VALUATION ADMINISTRATOR (PVA). All Rights Reserved.

Integrated Overflow Abatement Plan
Vol. 3 - Sanitary Sewer Discharge Plan
Morris Forman Sewershed
Small WWTP - Hunting Creek Area
Branch Network
Figure 2.5.11



Legend

- Documented SSO
- Suspected SSO
- Haul Operation
- WWTP
- Pump Station
- Force Main
- Collector < 12"
- Interceptor =>12"
- Streams
- Interstates
- Small WWTP Service Area
- Large WWTP Service Area
- CSO Area
- Hunting Creek North #1
- Hunting Creek North #2
- Hunting Creek North #3
- Hunting Creek South #1
- Hunting Creek South #2
- County Boundary

1 inch equals 900 feet
 Scalable when printed on 11" X 17" paper

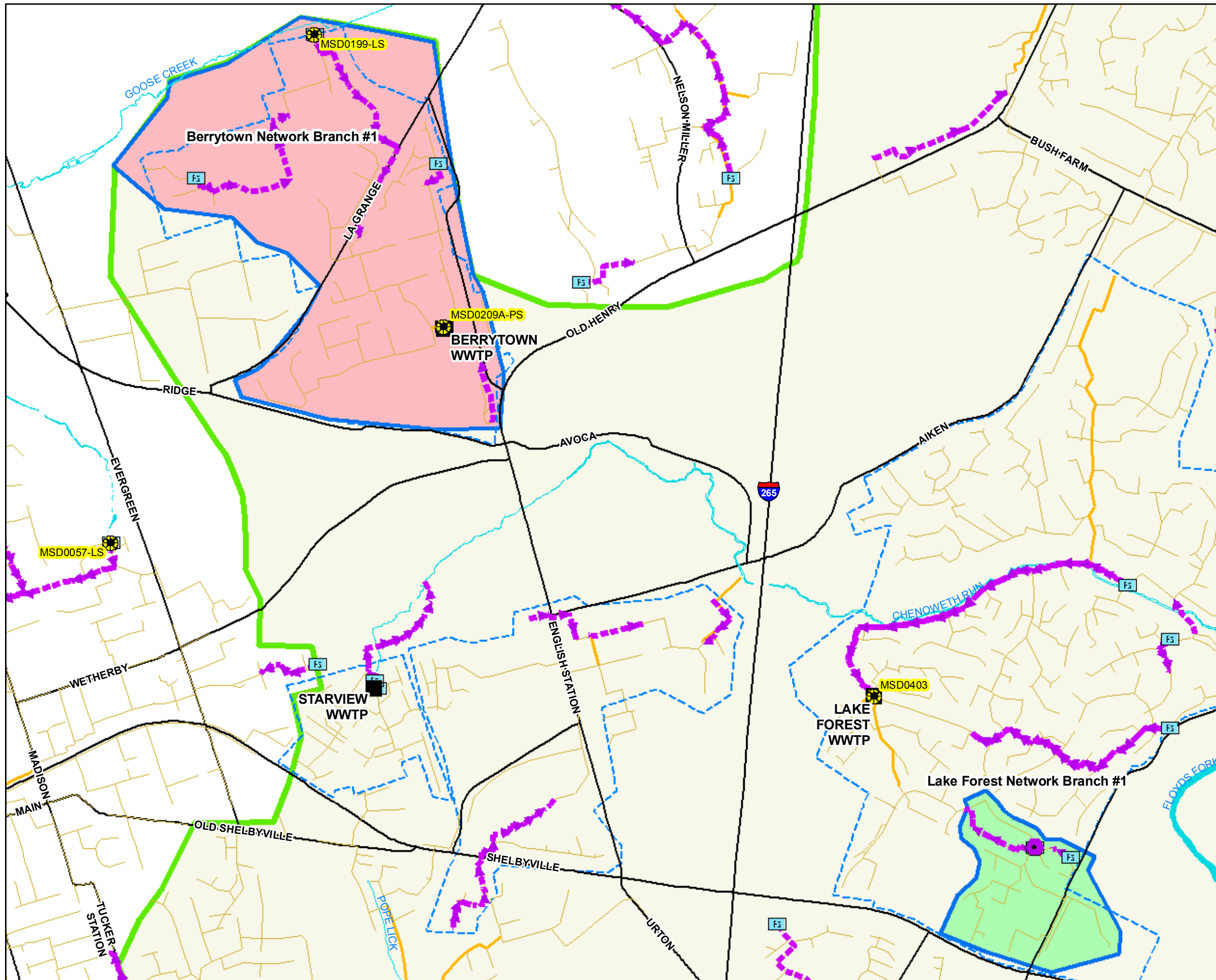


Some boundaries are uniquely symbolized within the map.
 Map Revision
 May 7, 2009



Copyright © 2008 LOUISVILLE AND JEFFERSON COUNTY METROPOLITAN SEWER DISTRICT (MSD), LOUISVILLE WATER COMPANY, LOUISVILLE METRO GOVERNMENT, and JEFFERSON COUNTY PROPERTY VALUATION ADMINISTRATOR (PVA). All Rights Reserved.

Integrated Overflow Abatement Plan
Vol. 3 - Sanitary Sewer Discharge Plan
Morris Forman Sewershed
Small WWTP - Berrytown and Lake Forest Area
Branch Network
Figure 2.5.12



Legend

- Documented SSD
- Suspected SSD
- Haul Operation
- WWTP
- Pump Station
- Force Main
- Collector < 12 "
- Interceptor =>12"
- Streams
- Interstates
- Small WWTP Service Area
- Large WWTP Service Area
- CSO Area
- Berrytown Network Branch #1
- Lake Forest Network Branch #1
- County Boundary

1 inch equals 1,450 feet
 Scalable when printed on 11" X 17" paper

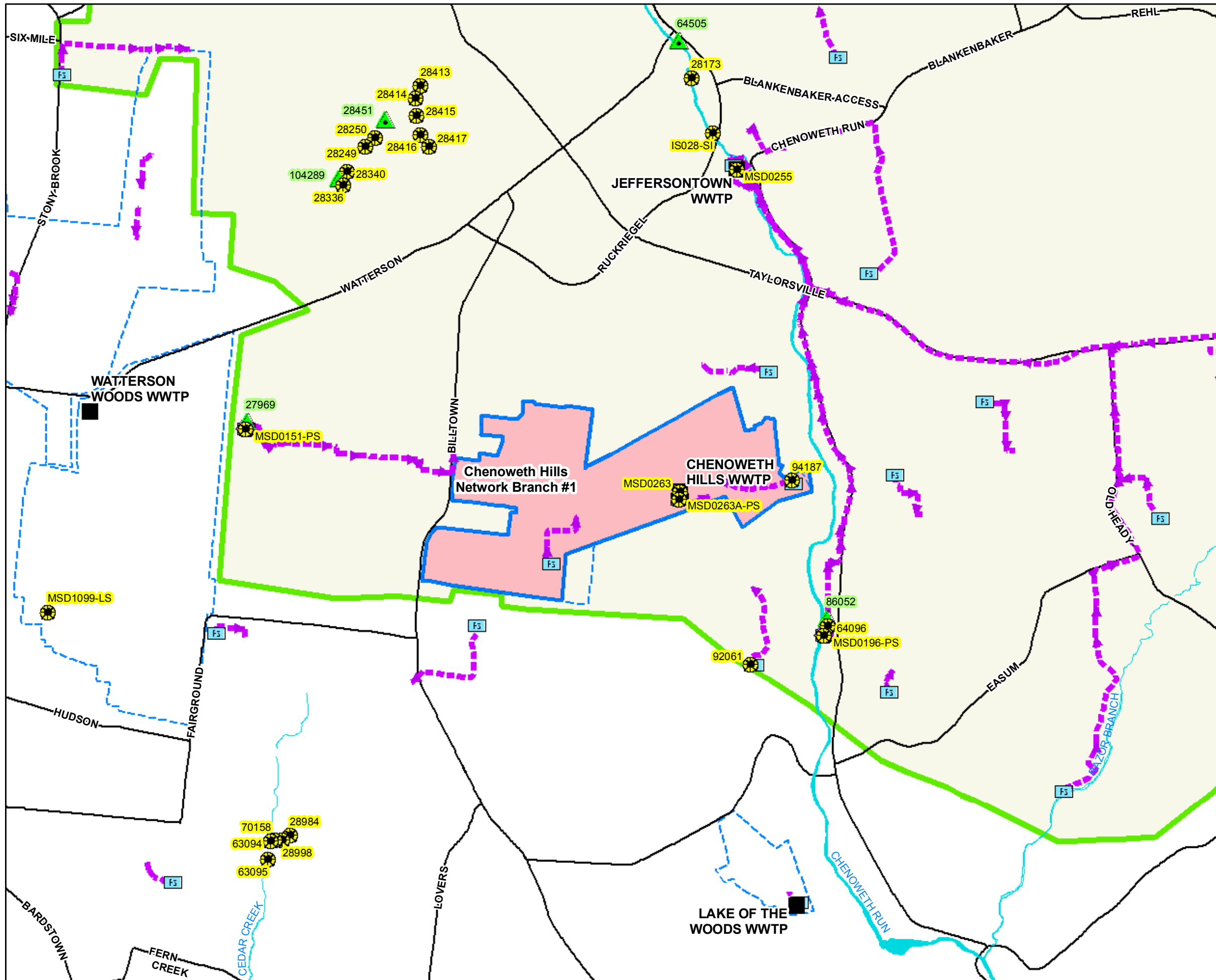


Some boundaries are uniquely symbolized within the map.
 Map Revision
 May 7, 2009



Copyright © 2008 LOUISVILLE AND JEFFERSON COUNTY METROPOLITAN SEWER DISTRICT (MSD), LOUISVILLE WATER COMPANY, LOUISVILLE METRO GOVERNMENT, and JEFFERSON COUNTY PROPERTY VALUATION ADMINISTRATOR (PVA). All Rights Reserved.

Integrated Overflow Abatement Plan
Vol. 3 - Sanitary Sewer Discharge Plan
Morris Forman Sewershed
Small WWTP - Chenoweth Hills Area
Branch Network
Figure 2.5.13



Legend

- Documented SSO
- Suspected SSO
- Haul Operation
- WWTP
- Pump Station
- Force Main
- Collector < 12"
- Interceptor =>12"
- Streams
- Interstates
- Small WWTP Service Area
- Large WWTP Service Area
- CSO Area
- Chenoweth Hills Network Branch #1
- County Boundary

1 inch equals 1,500 feet
 Scalable when printed on 11" X 17" paper

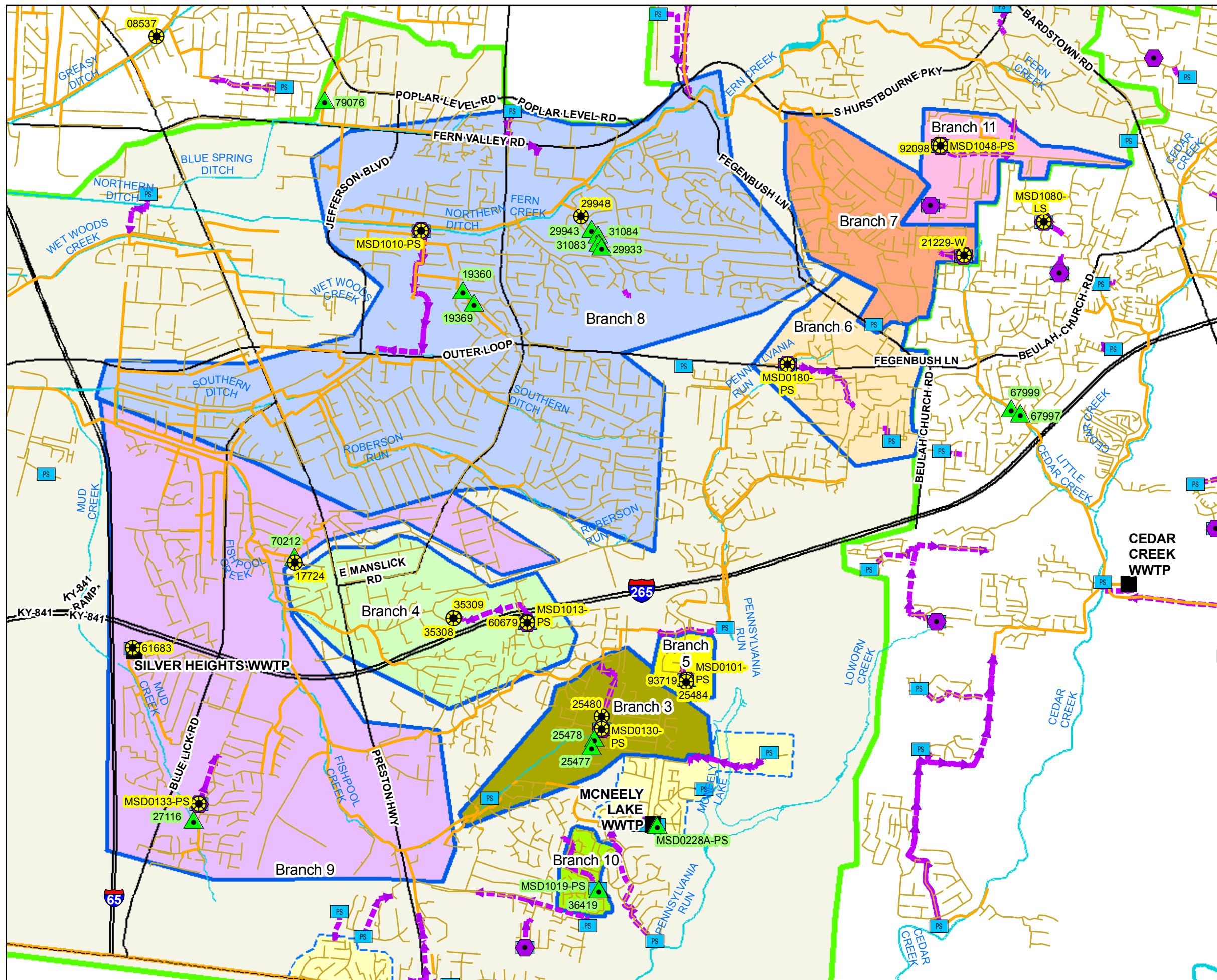


Some boundaries are uniquely symbolized within the map.
 Map Revision
 May 7, 2009



Copyright © 2008 LOUISVILLE AND JEFFERSON COUNTY METROPOLITAN SEWER DISTRICT (MSD), LOUISVILLE WATER COMPANY, LOUISVILLE METRO GOVERNMENT, and JEFFERSON COUNTY PROPERTY VALUATION ADMINISTRATOR (PVA). All Rights Reserved.

Integrated Overflow Abatement Plan
Vol. 3 Sanitary Sewer Discharge Plan
West County Pond
Creek Area Sewershed
Branch Network
Figure 2.5.14



Legend

- Documented SSO
- Suspected SSO
- Haul Operation
- WWTP
- Pump Station
- Force Main
- Collector < 12"
- Interceptor => 12"
- Streams
- Major Road
- Small WWTP Service Area
- Large WWTP Service Area
- CSO Area
- Branch 3
- Branch 4
- Branch 5
- Branch 6
- Branch 7
- Branch 8
- Branch 9
- Branch 10
- Branch 11
- County Boundary

1 inch = 3,000 feet
 Scalable when printed on 11" X 17" paper

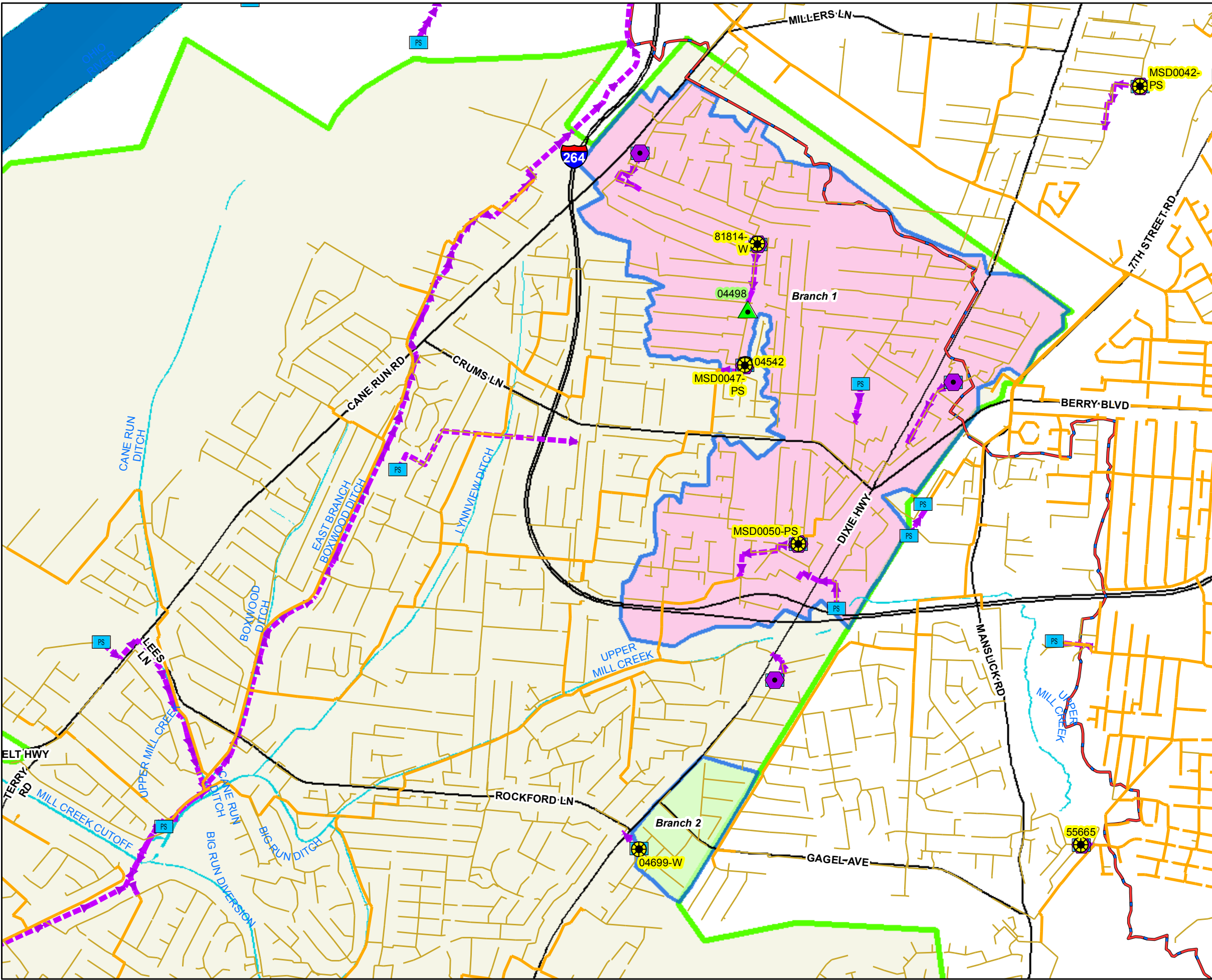
Some boundaries are uniquely symbolized within the map.

Map Revision
 May 07, 2009



Copyright © 2008 LOUISVILLE AND JEFFERSON COUNTY METROPOLITAN SEWER DISTRICT (MSD), LOUISVILLE WATER COMPANY, LOUISVILLE METRO GOVERNMENT, and JEFFERSON COUNTY PROPERTY VALUATION ADMINISTRATOR (PVA). All Rights Reserved.

Integrated Overflow Abatement Plan
Vol. 3 Sanitary Sewer Discharge Plan
West County Mill
Creek Area Sewershed
Branch Network
Figure 2.5.15



- Legend**
- Documented SSO
 - Suspected SSO
 - Haul Operation
 - WWTP
 - Pump Station
 - Force Main
 - Collector < 12"
 - Interceptor =>12"
 - Major Road
 - Streams
 - CSO Area
 - Small WWTP Service Area
 - Large WWTP Service Area
 - Branch 1
 - Branch 2
 - County Boundary

1 inch = 1,800 feet
 Scalable when printed on 11" X 17" paper

Some boundaries are uniquely symbolized within the map.

Map Revision
 May 07, 2009



Copyright © 2008 LOUISVILLE AND JEFFERSON COUNTY METROPOLITAN SEWER DISTRICT (MSD), LOUISVILLE WATER COMPANY, LOUISVILLE METRO GOVERNMENT, and JEFFERSON COUNTY PROPERTY VALUATION ADMINISTRATOR (PVA). All Rights Reserved.