



MSD's Amended Consent Decree: Prospect WWTP Eliminations

September 27, 2011

MSD's Amended Consent Decree: Prospect WWTP Eliminations



MSD is currently required to eliminate 5 Existing Treatment Plants by the end of 2015.

The elimination of these five plants will result in improved water quality in the Prospect Area and Harrods Creek Watersheds.

MSD's Amended Consent Decree: Prospect WWTP Eliminations

The 5 Existing WWTPs

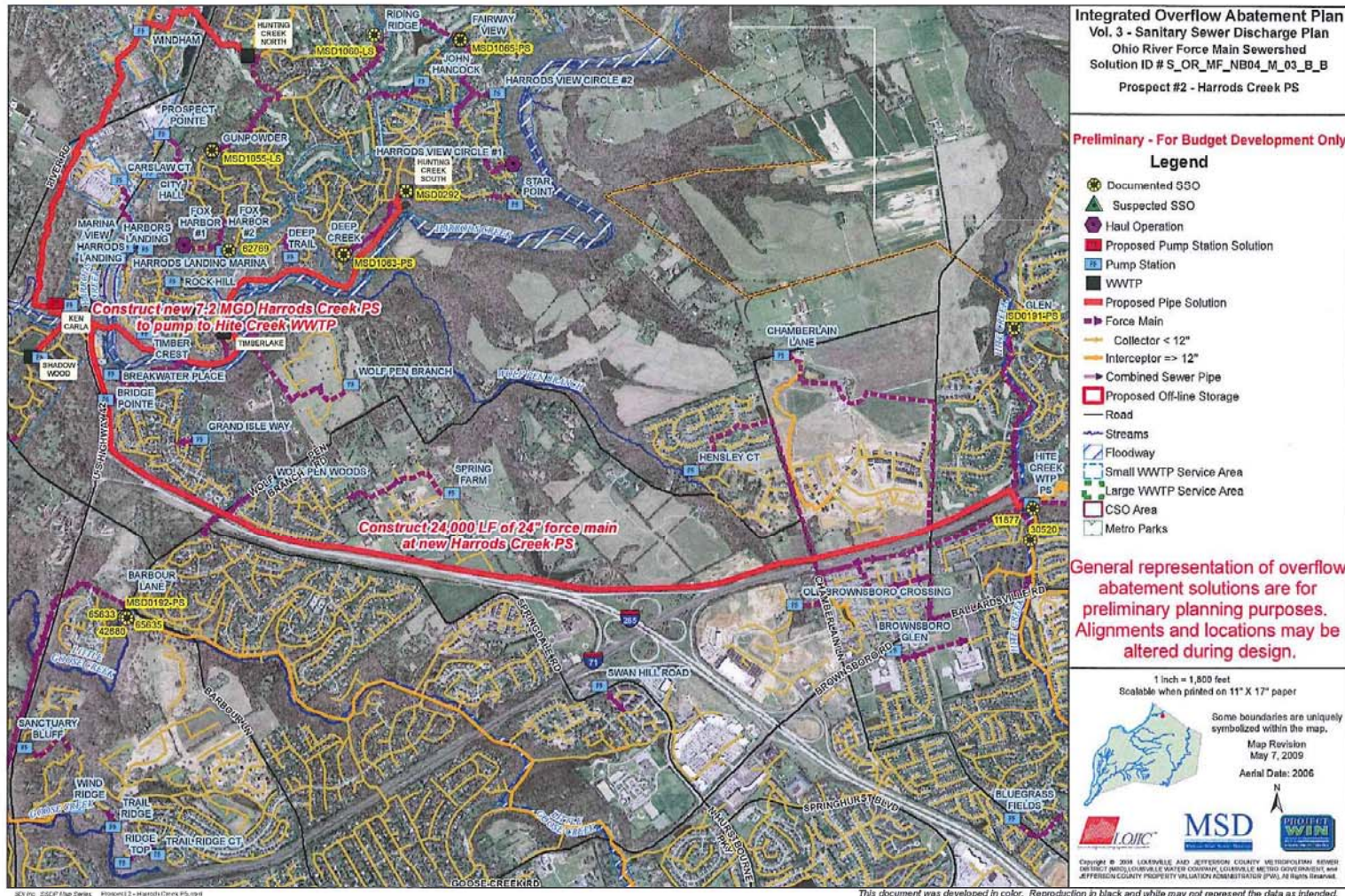
- Hunting Creek North (built 1964, acquired 1999)
- Hunting Creek South (built 1968, acquired 1999)
- Timberlake (built 1973, acquired 1999)
- Ken Carla (built 1968, acquired 1973)
- Shadow Wood (built 1979, acquired 2008)



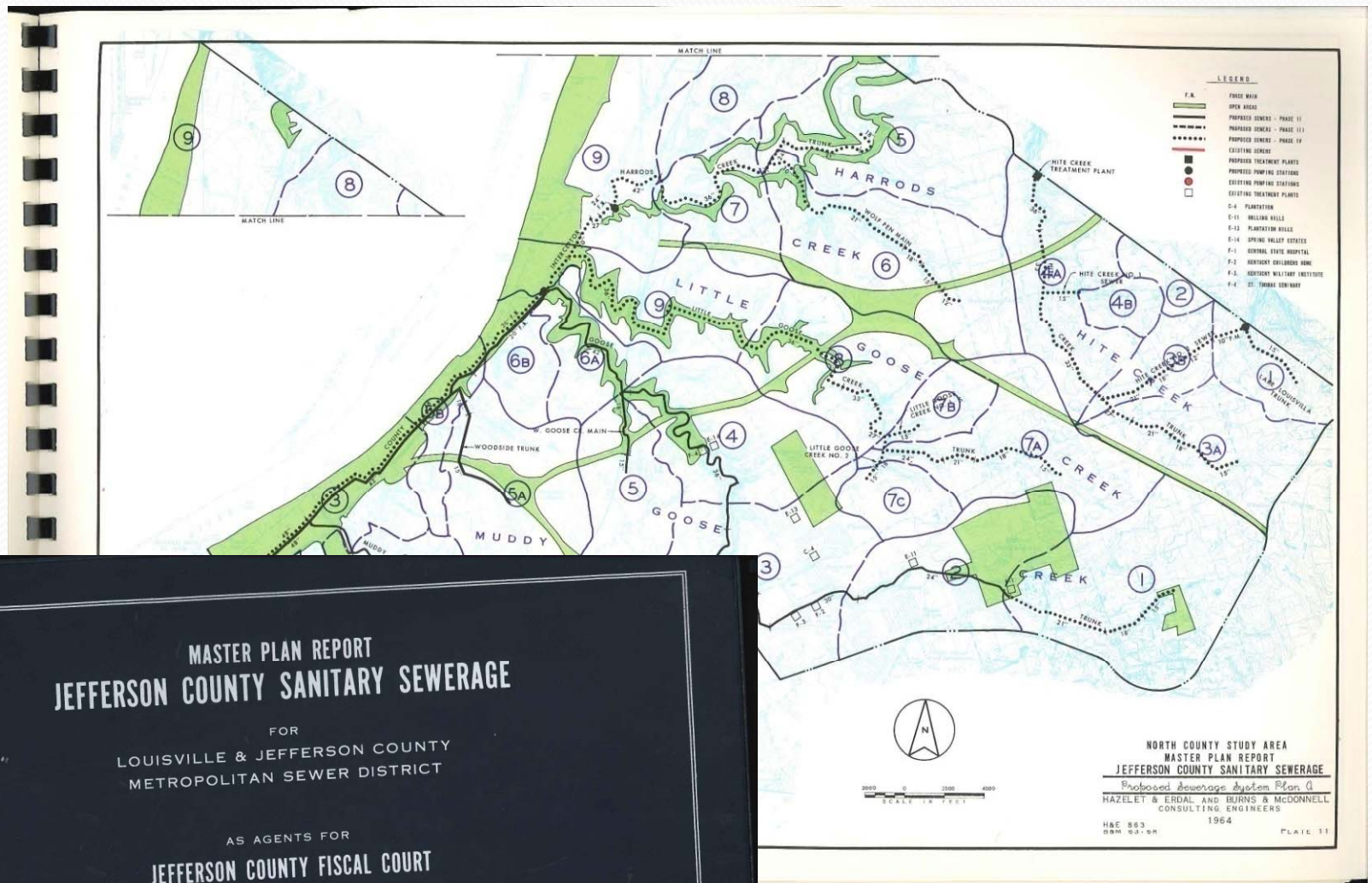
MSD's Amended Consent Decree: Prospect WWTP Eliminations – Critical Dates

- March 31, 2009 – MSD required to submit a plan to EPA summarizing a selected option for the elimination of the (5) existing package plants in the Prospect area.
- June 10, 2009 – MSD was granted a wasteload allocation allowing for the expansion of the MSD Hite Creek Water Quality Treatment Center from 6.0 MGD to 8.8 MGD in anticipation of the increased flows from Prospect.
- September 2009 – EPA formal approval of the Elimination Plan.

MSD's Amended Consent Decree: Prospect WWTP Eliminations



MSD's Amended Consent Decree: Prospect WWTP Eliminations



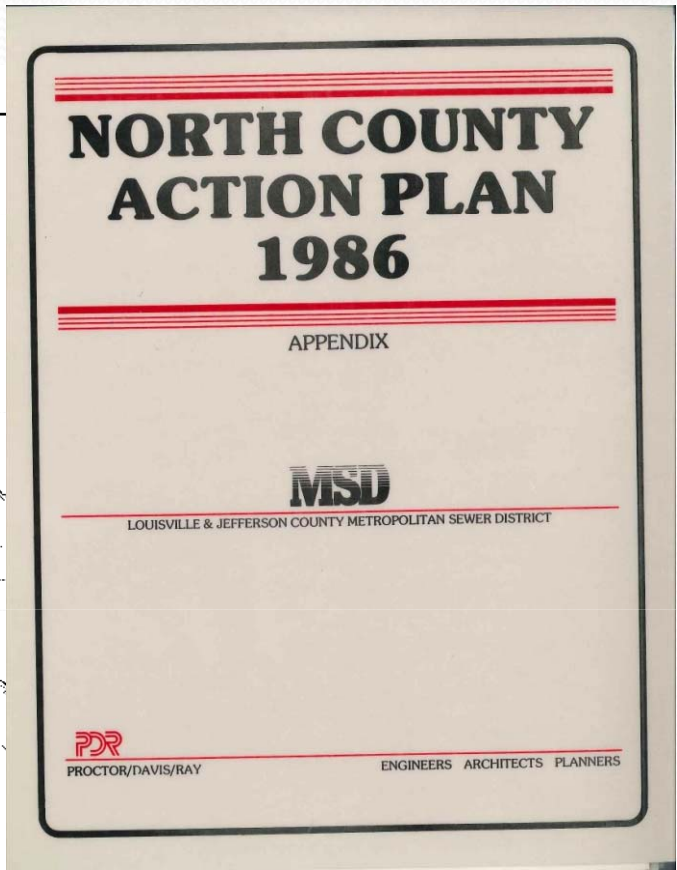
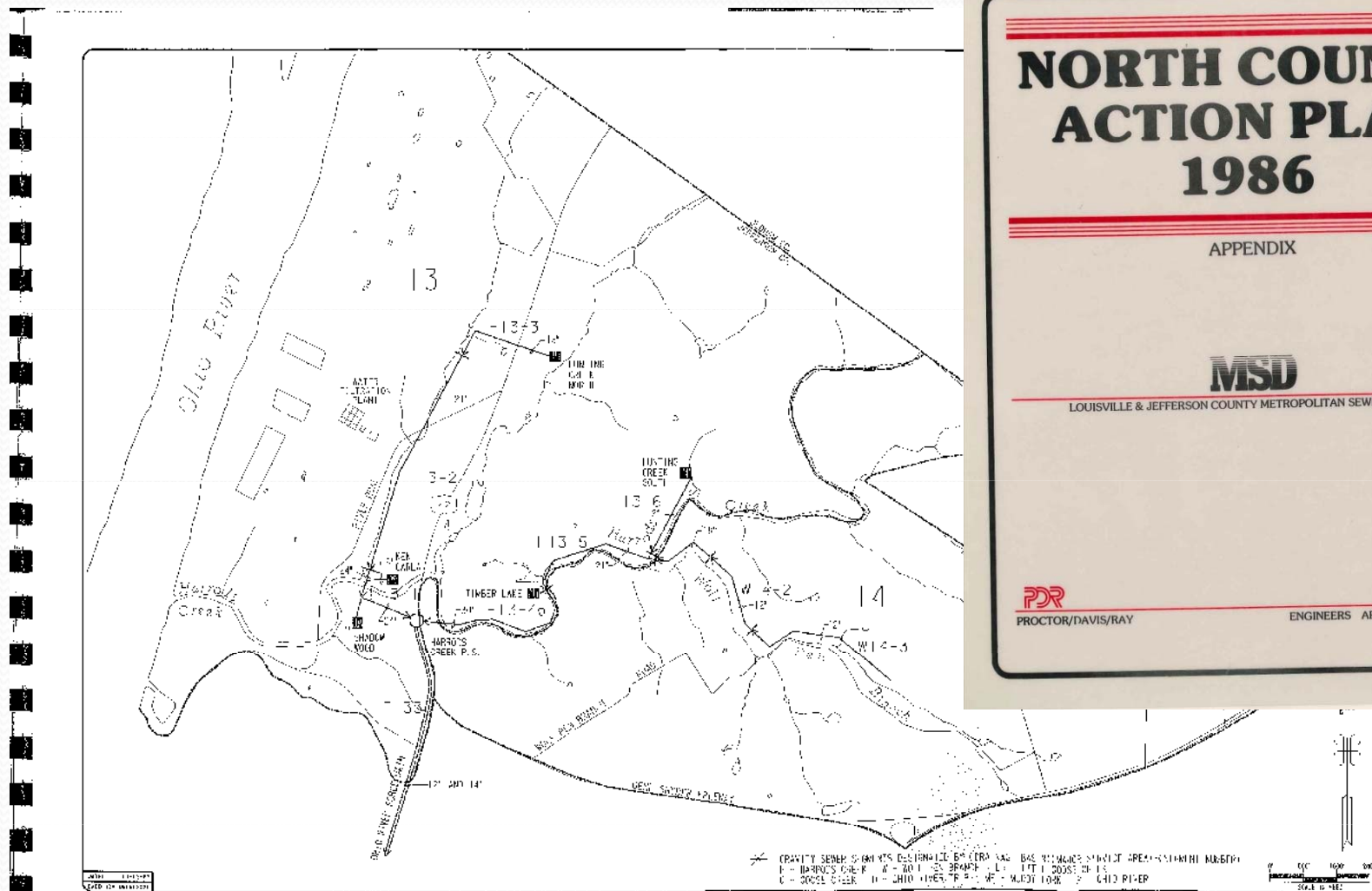
MASTER PLAN REPORT
JEFFERSON COUNTY SANITARY SEWERAGE
 FOR
 LOUISVILLE & JEFFERSON COUNTY
 METROPOLITAN SEWER DISTRICT

 AS AGENTS FOR
JEFFERSON COUNTY FISCAL COURT

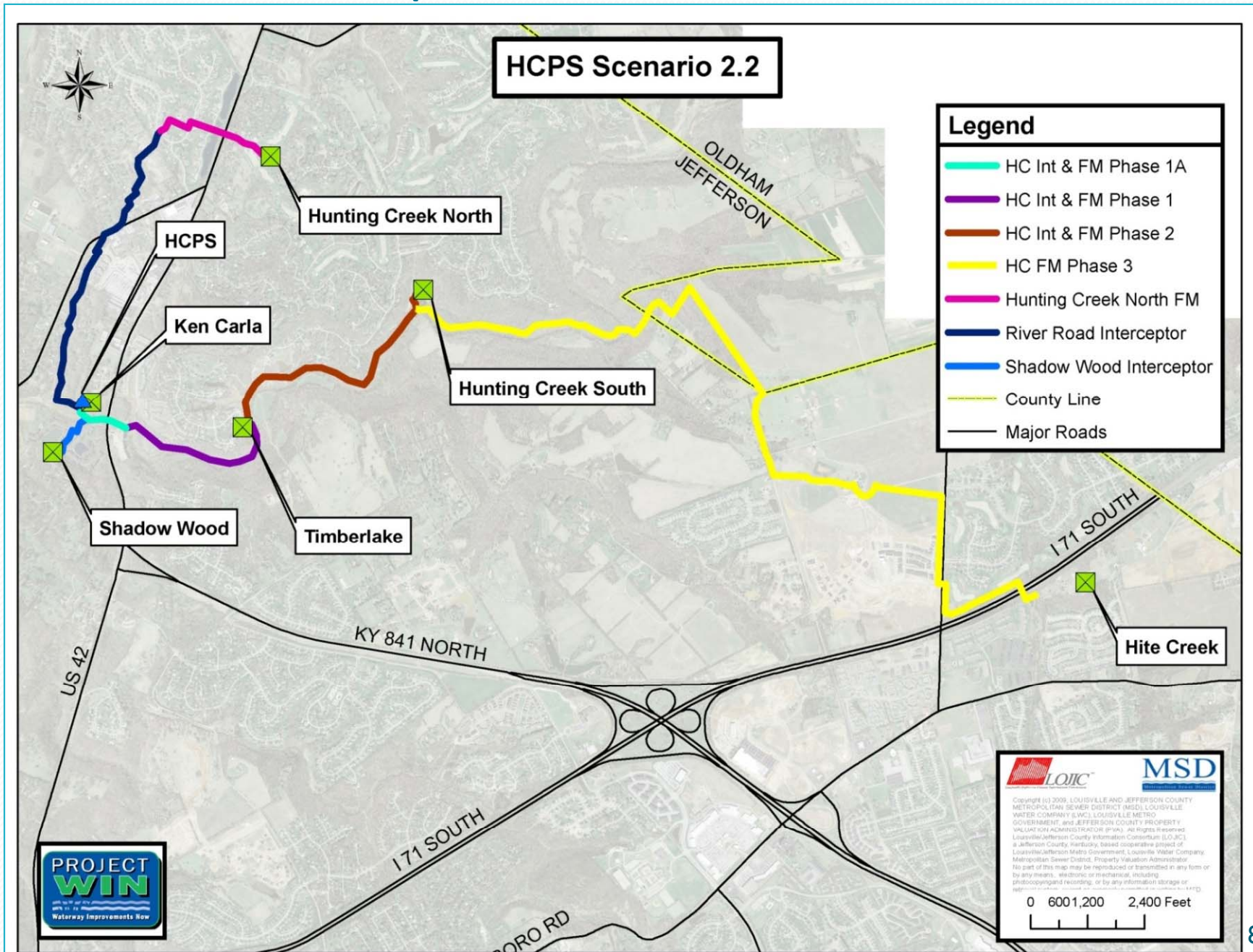
 1964

 HAZLET & ERDAL and BURNS & McDONNELL
 CONSULTING ENGINEERS

MSD's Amended Consent Decree: Prospect WWTP Eliminations



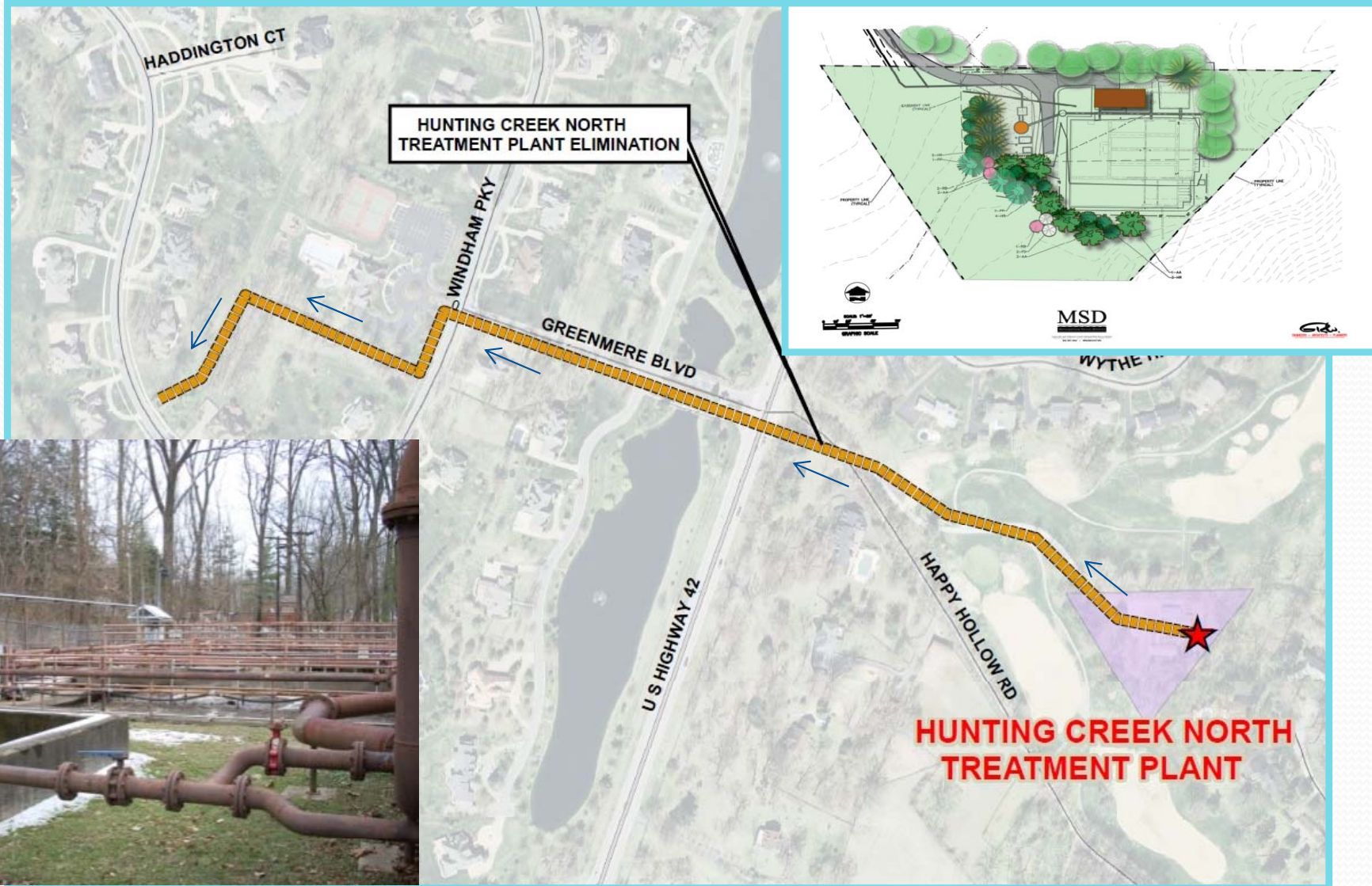
MSD's Amended Consent Decree: Prospect WWTP Eliminations



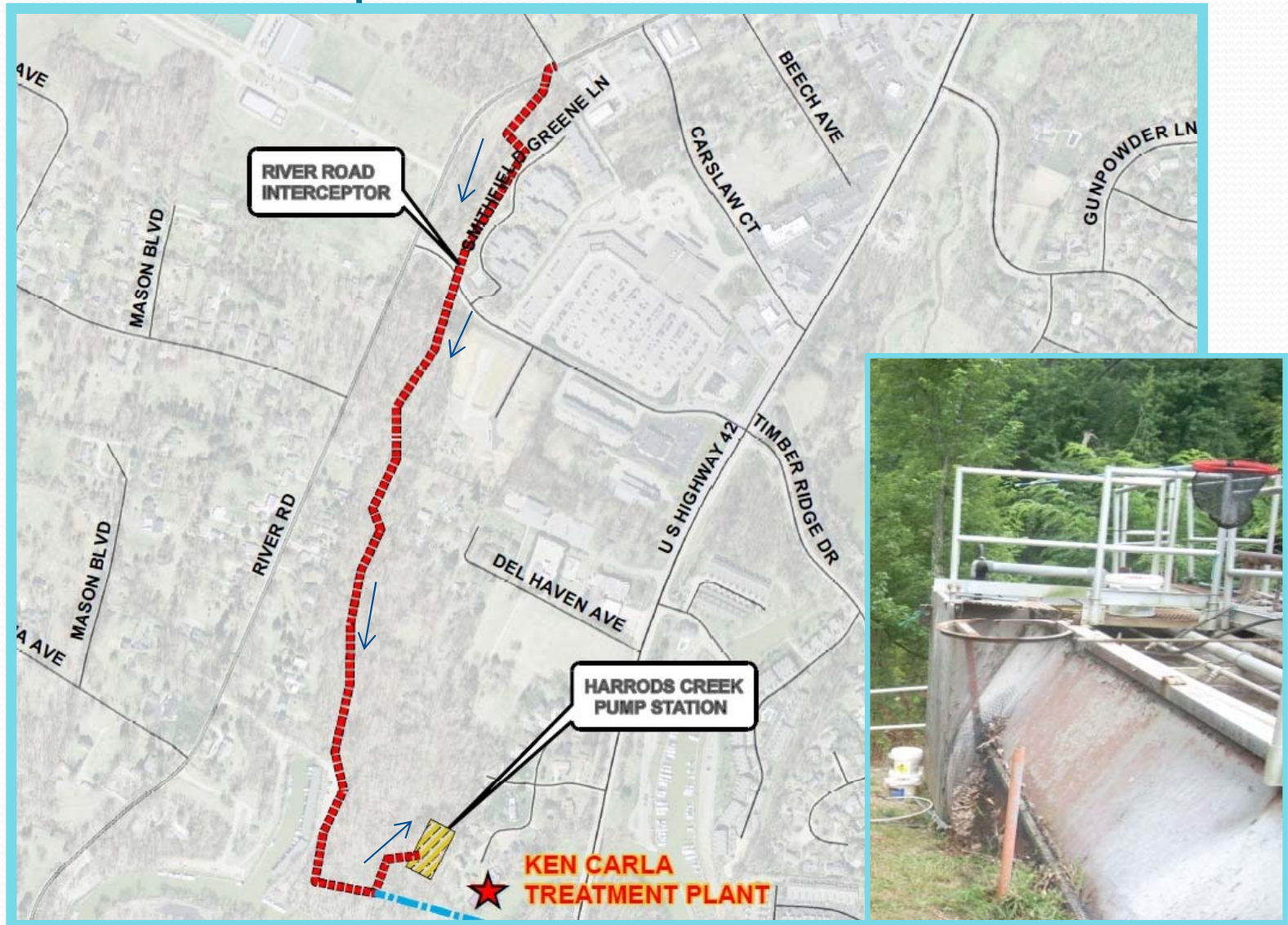
MSD's Amended Consent Decree: Harrods Creek Pump Station



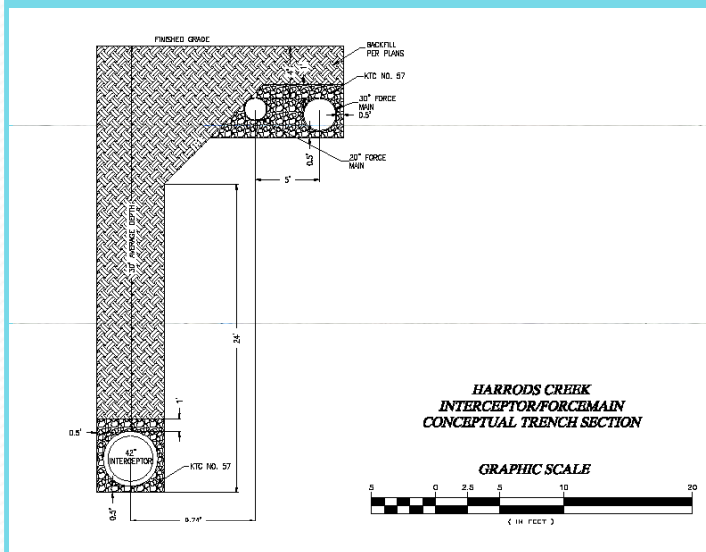
MSD's Amended Consent Decree: Prospect WWTP Eliminations



MSD's Amended Consent Decree: Prospect WWTP Eliminations



MSD's Amended Consent Decree: Prospect WWTP Eliminations



MSD's Amended Consent Decree: Prospect WWTP Eliminations



MSD's Amended Consent Decree: Prospect WWTP Eliminations



Field walk with City of Prospect Council to choose best route for the Harrods Creek Force Main Phase 3 that goes through City of Prospect Property (2/4/11)



MSD's Amended Consent Decree: Prospect WWTP Eliminations

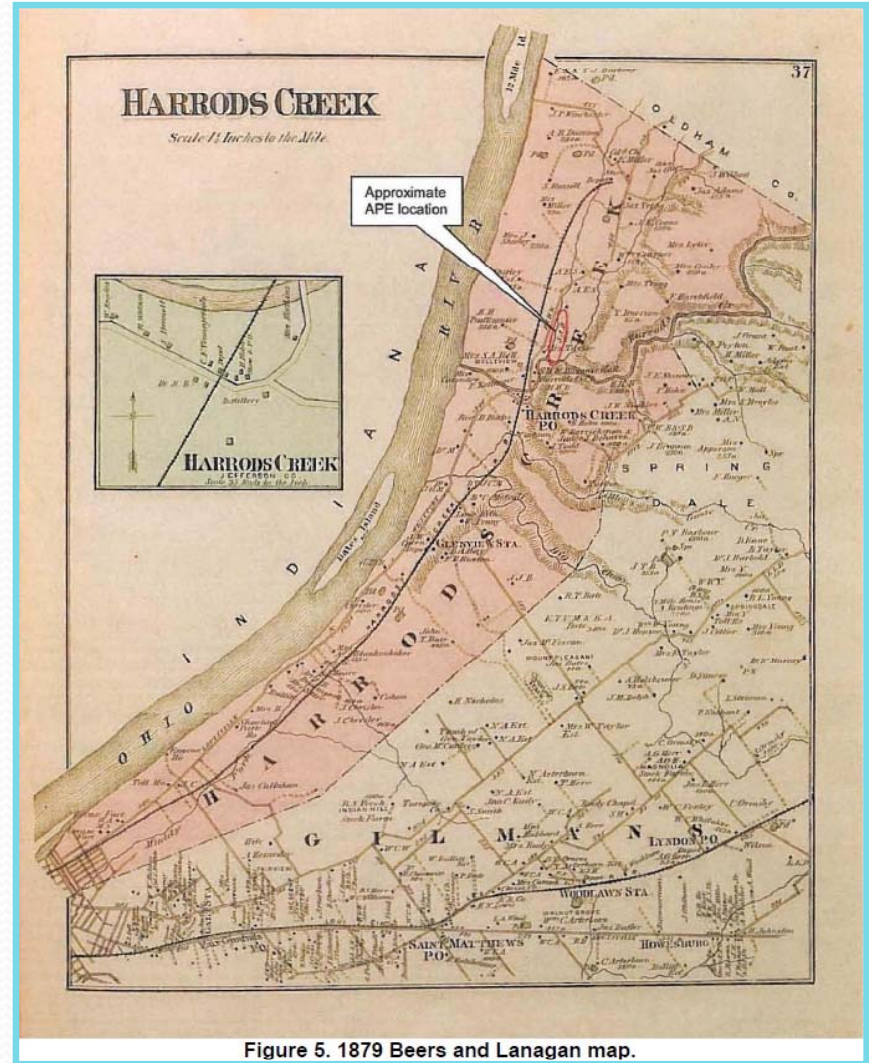
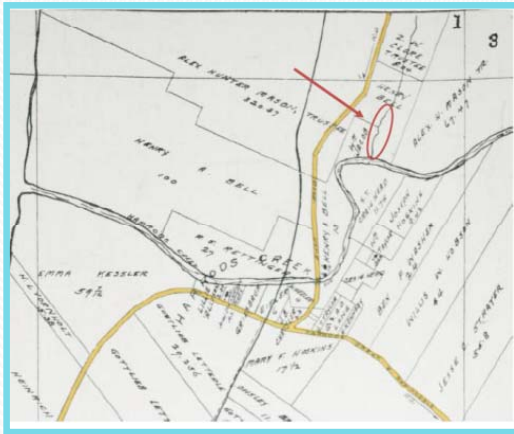


Figure 5. 1879 Beers and Lanagan map.

MSD's Amended Consent Decree: Prospect WWTP Eliminations

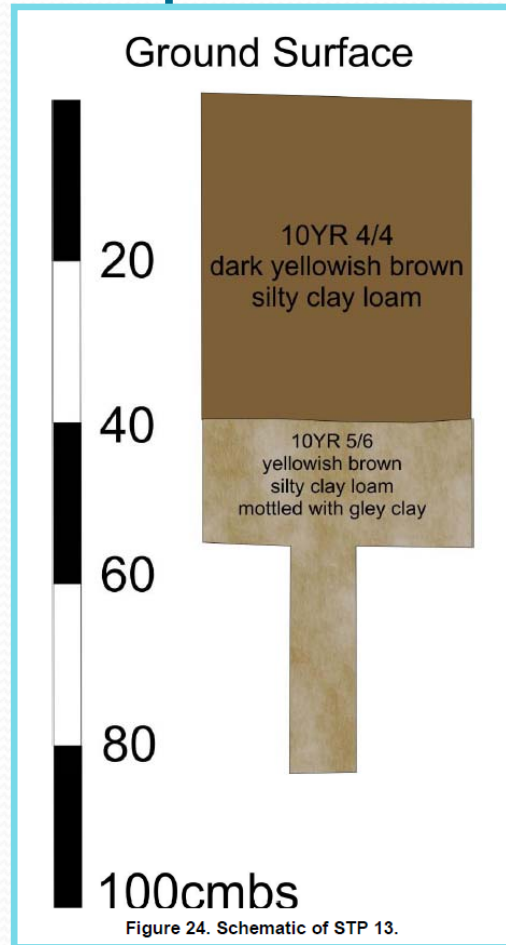
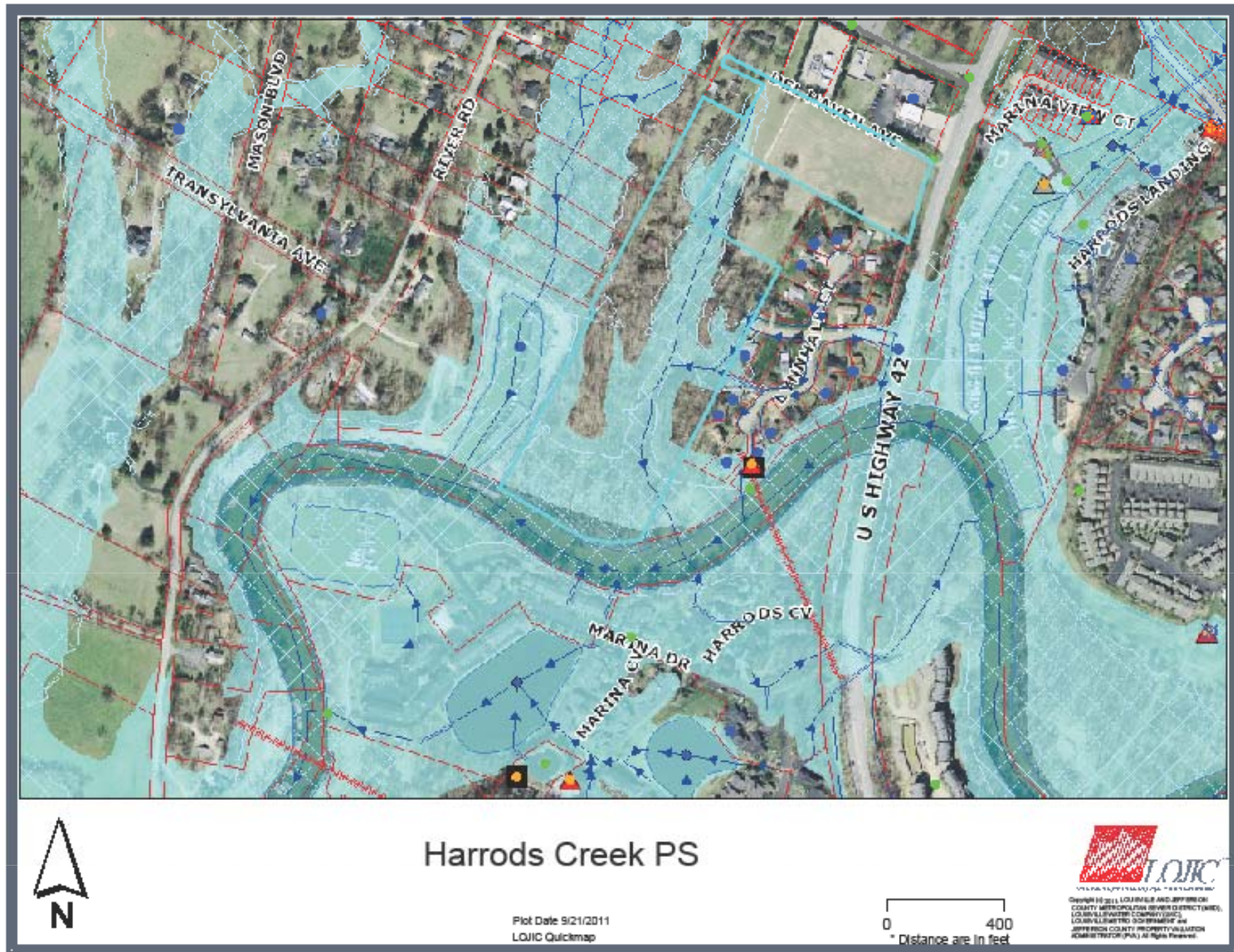
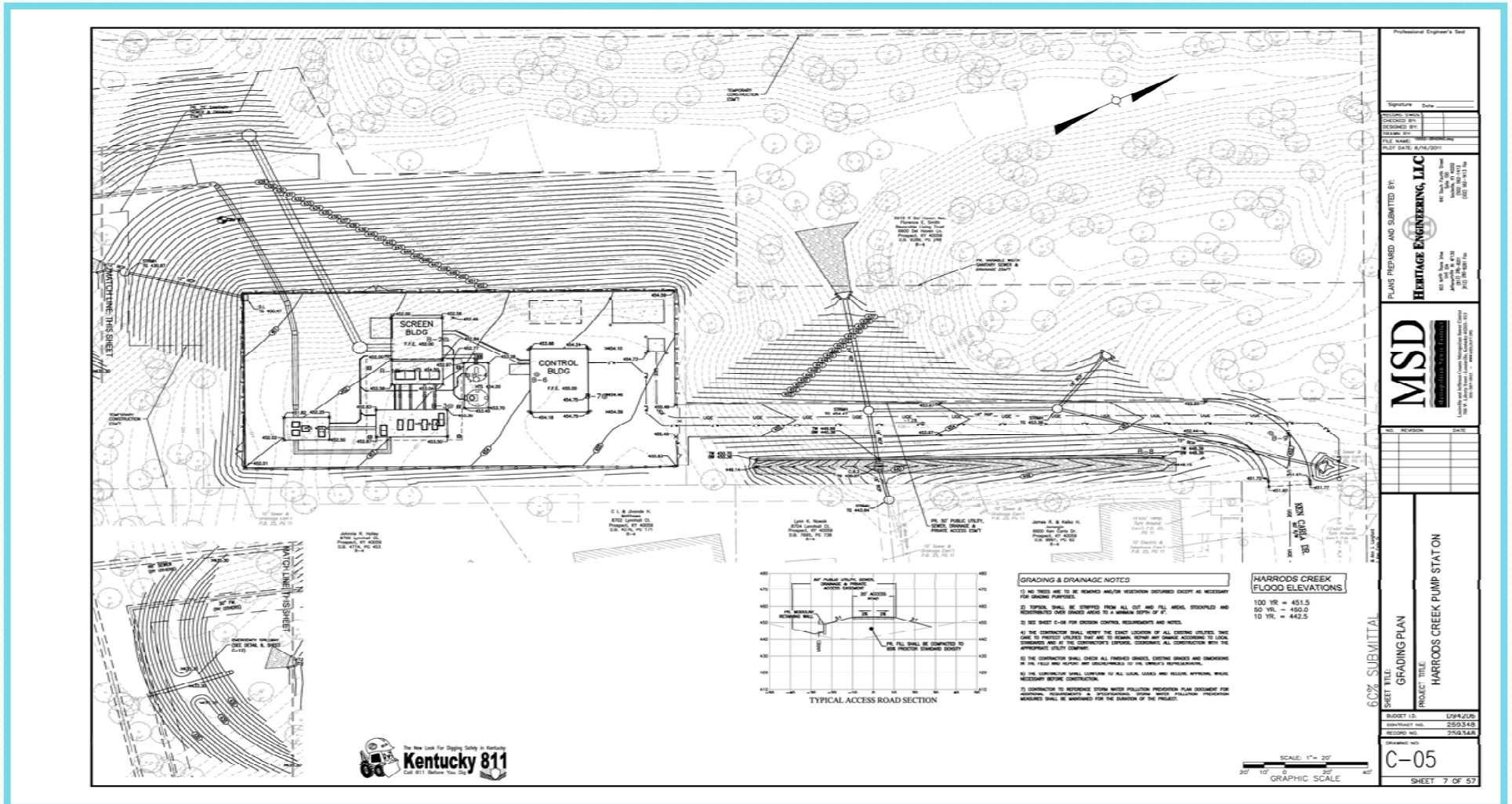


Figure 22. Shovel probe that was augered at base.

MSD's Amended Consent Decree: Prospect WWTP Eliminations



MSD's Amended Consent Decree: Prospect WWTP Eliminations



MSD's Amended Consent Decree: Prospect WWTP Eliminations

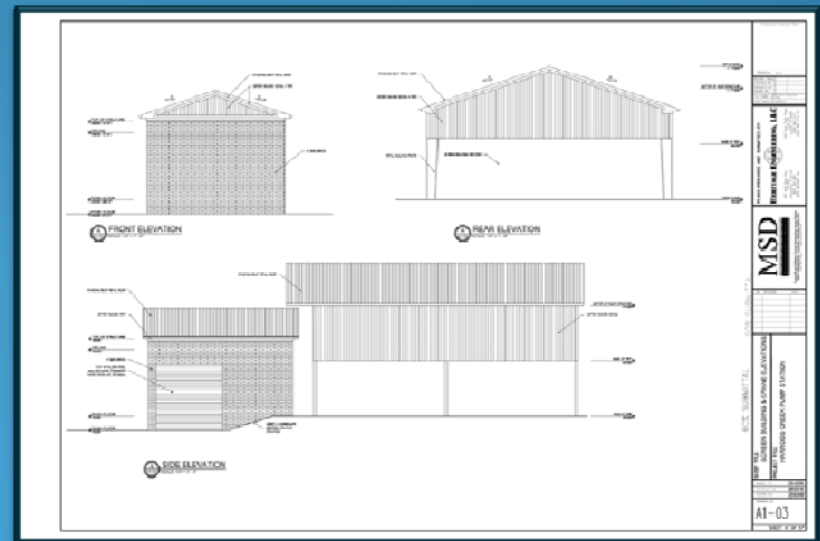
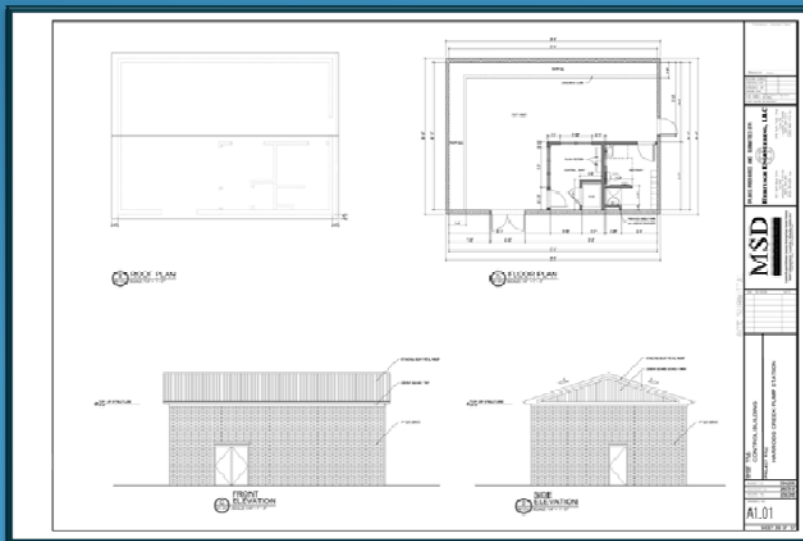


HARRODS CREEK PUMP STATION



Harrods Creek Pump Station – Major Components

- Access Road
- Force Main
- Wet Well
- Valve Vault
- Pumps
- Odor Control
- Screening
- Generators
- Underhung Crane System
- Control Building



Harrods Creek Pump Station – Major Components



MSD's Amended Consent Decree: Prospect WWTP Eliminations



PROJECT NAME	CURRENT PROJECT BUDGET
SHADOW WOOD PUMP STATION & FM	\$235,000.00
NORTH HUNTING CREEK PS & FM	\$447,000.00
HARRODS CREEK INTERCEPTOR PH 2	\$2,200,000.00
HARRODS CREEK P.S. & F.M.	\$16,600,000.00
HARRODS CRK INT PH 1	\$12,317,000.00
RIVER RD INT	\$4,430,000.00
PROSPECT SUBTOTAL:	\$36,229,000.00

MSD's Amended Consent Decree: Prospect WWTP Eliminations

