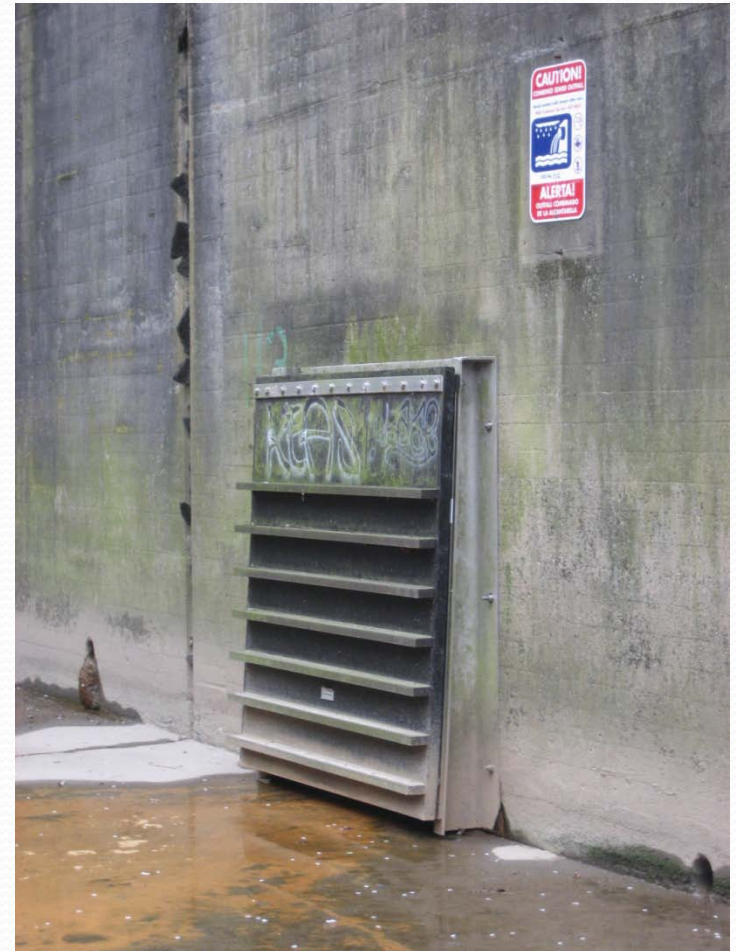
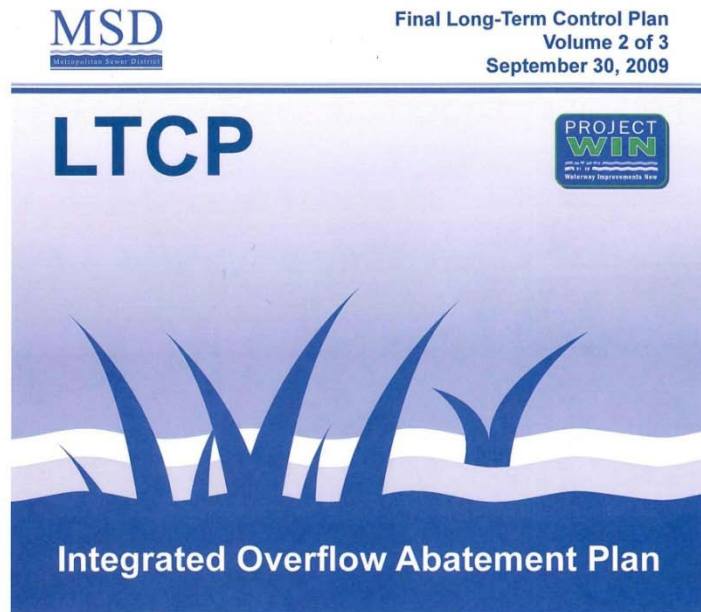


MSD's Amended Consent Decree: Logan Street CSO Basin & Conveyance System

The Long Term Control Plan details MSD's goals to improve the performance within the combined sewer service area.

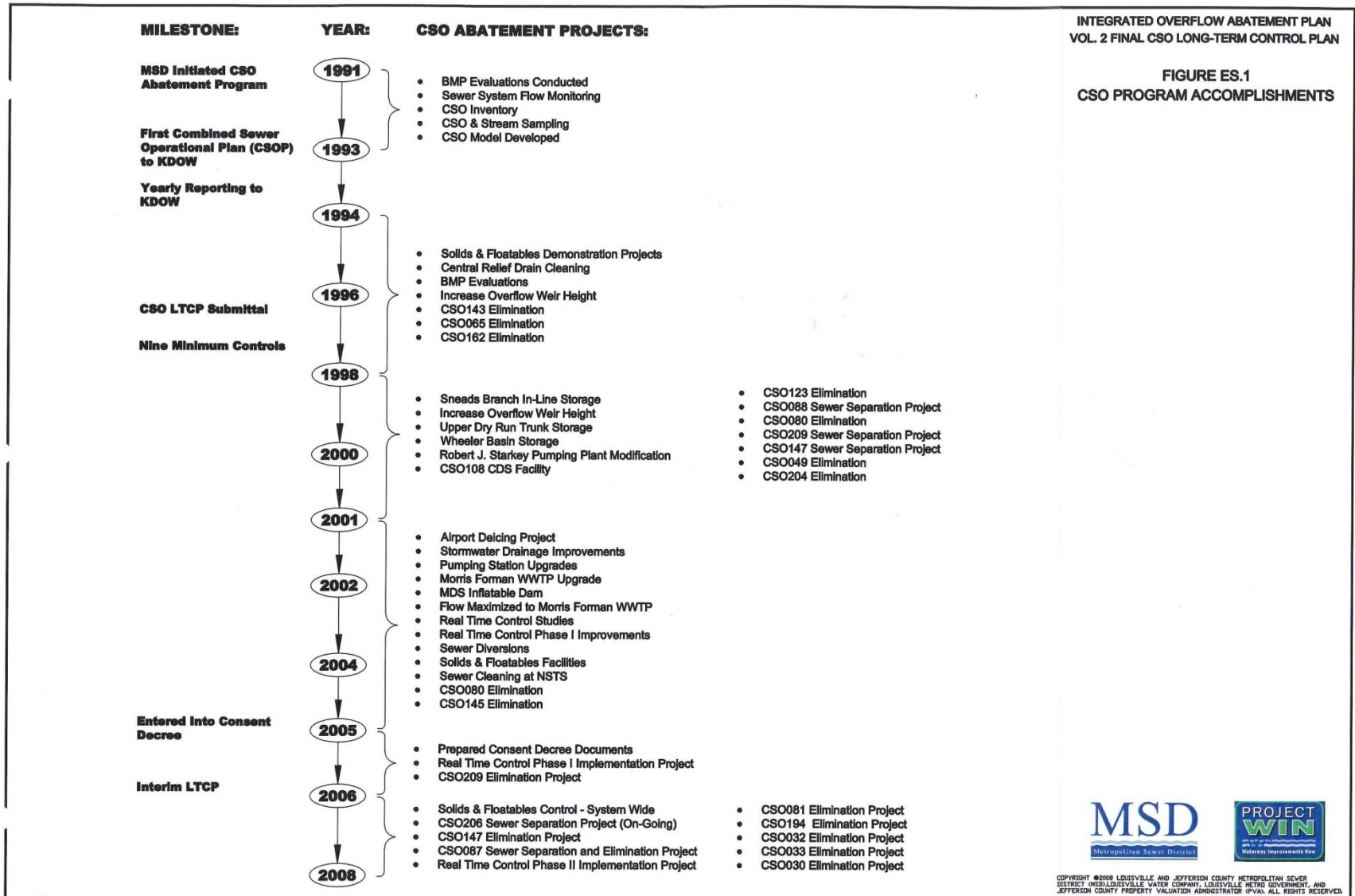


MSD's Amended Consent Decree: Logan Street CSO Basin & Conveyance System

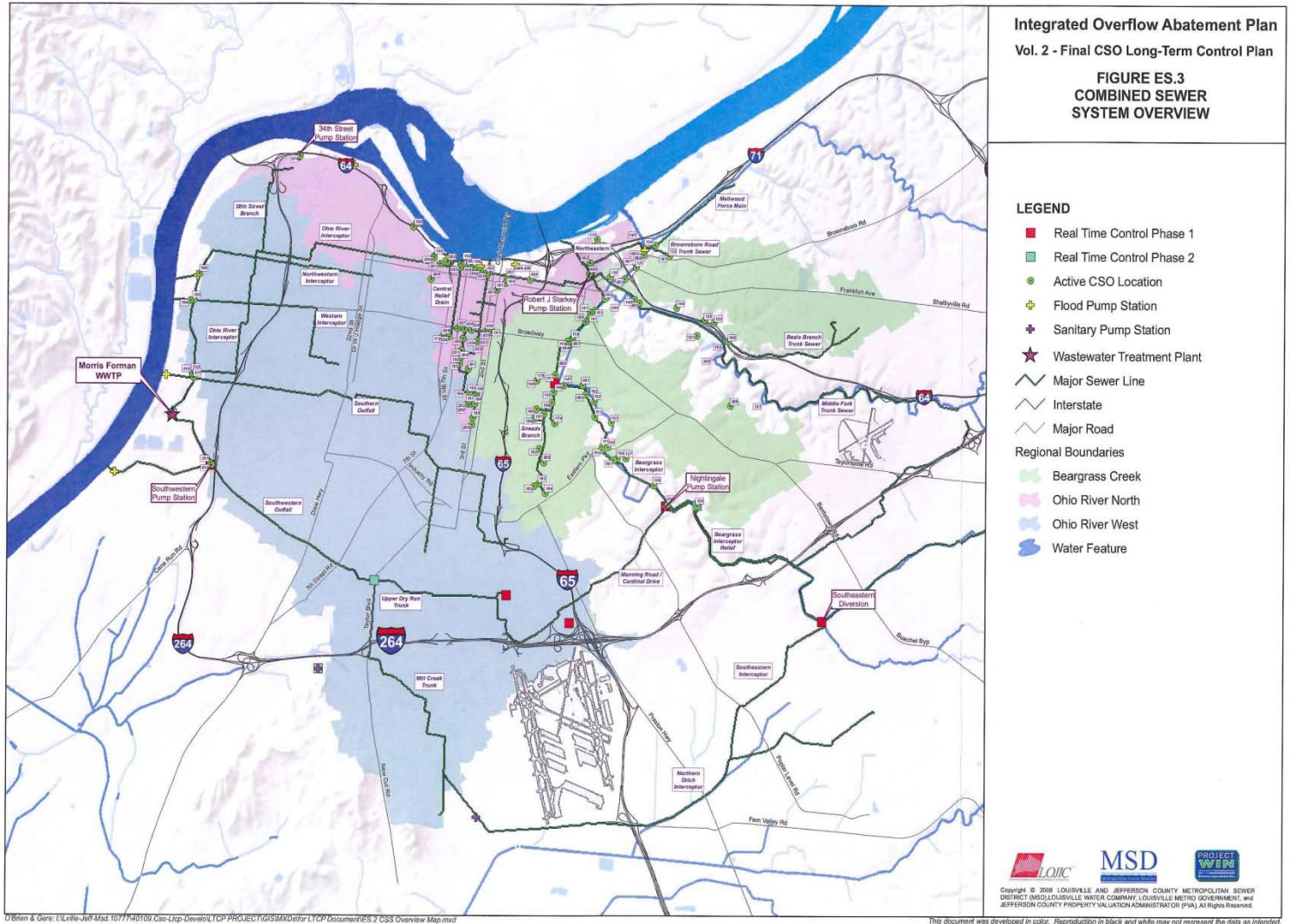
Combining wastewater and stormwater in a single pipe and designing the system to overflow during periods of heavy rainfall was considered state-of-the-art wastewater technology in the late 19th and early 20th centuries.



MSD's Amended Consent Decree: Logan Street CSO Basin & Conveyance System



MSD's Amended Consent Decree: Logan Street CSO Basin & Conveyance System







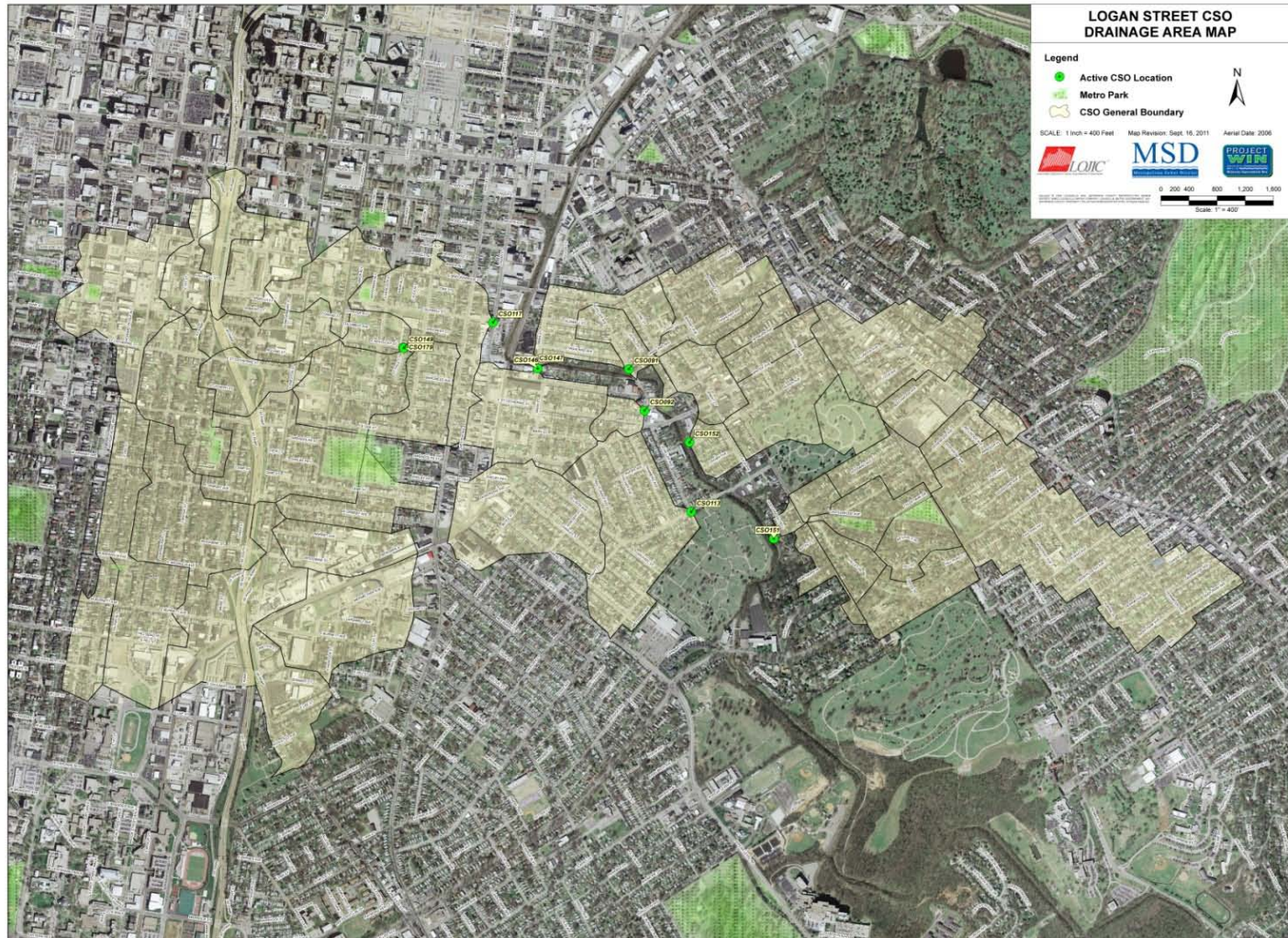
Copyright © 2008 LOUISVILLE AND JEFFERSON COUNTY METROPOLITAN SEWER DISTRICT (MSD), LOUISVILLE WATER COMPANY, LOUISVILLE METRO GOVERNMENT, and JEFFERSON COUNTY PROPERTY VALUATION ADMINISTRATOR (PVA). All Rights Reserved.

MSD's Amended Consent Decree: Logan Street CSO Basin & Conveyance System

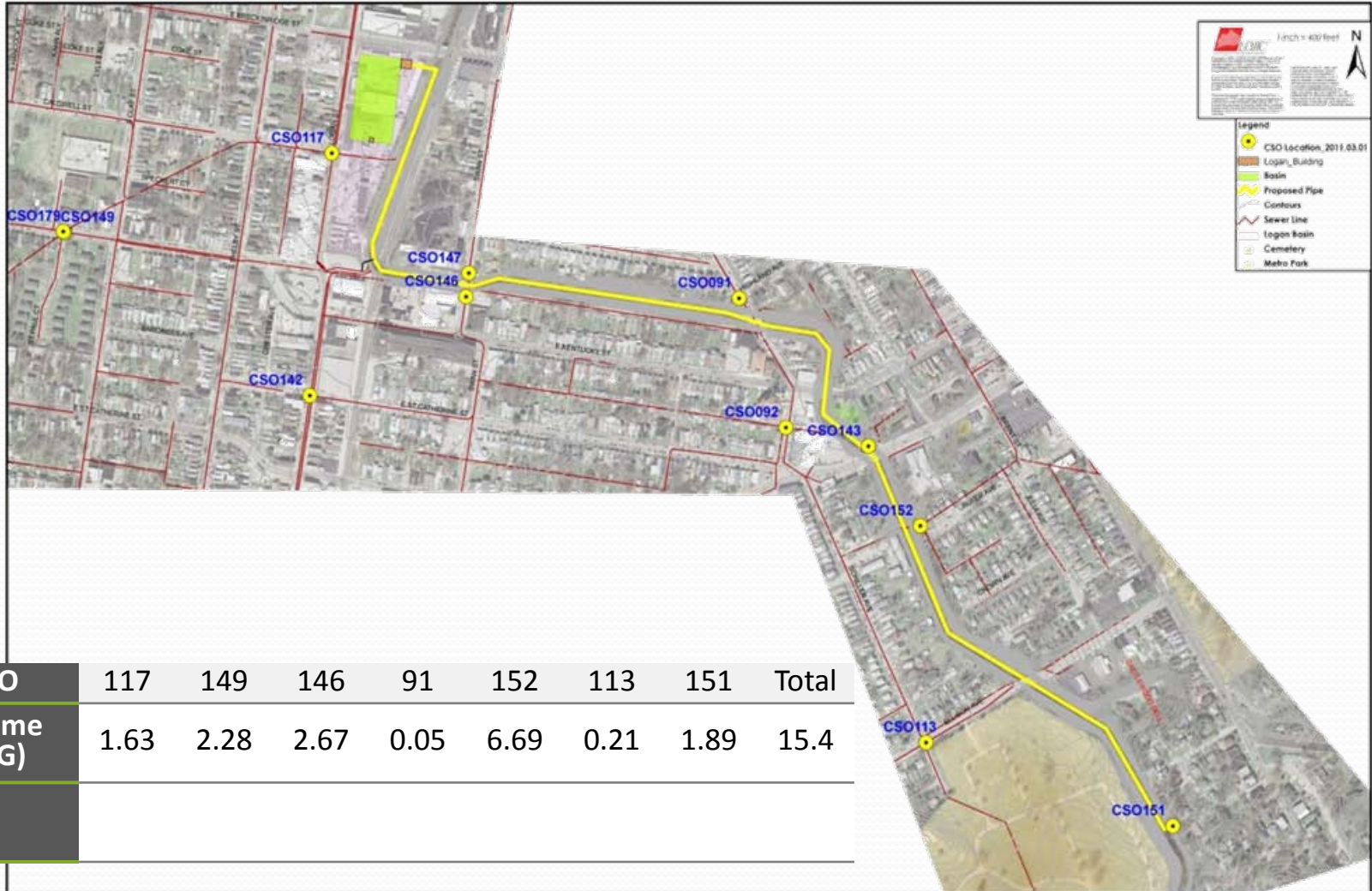
- The Logan Street CSO Basin is one of 13 CSO basins originally proposed in the Long Term Control Plan.
- It is the first CSO basin to move into detailed design, and is intended to standardize, to the extent possible, the design of these facilities.



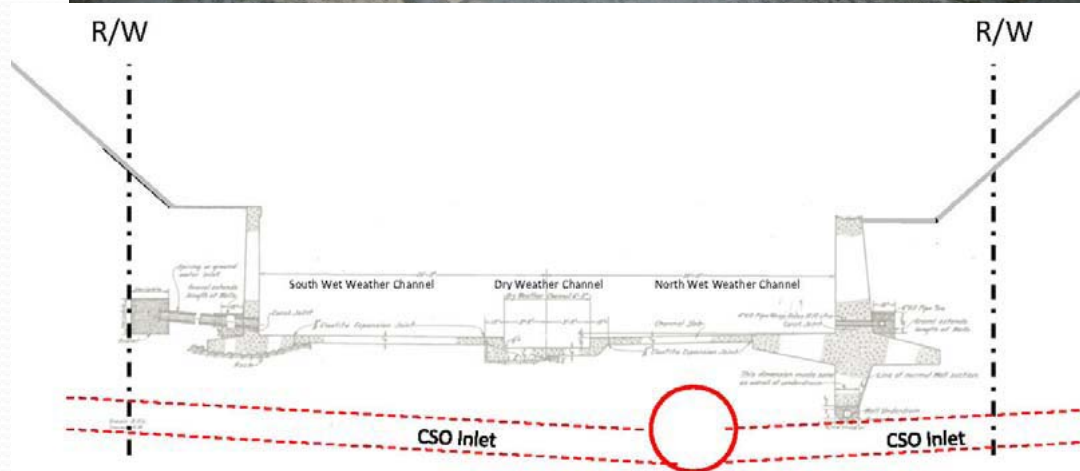
MSD's Amended Consent Decree: Logan Street CSO Basin & Conveyance System



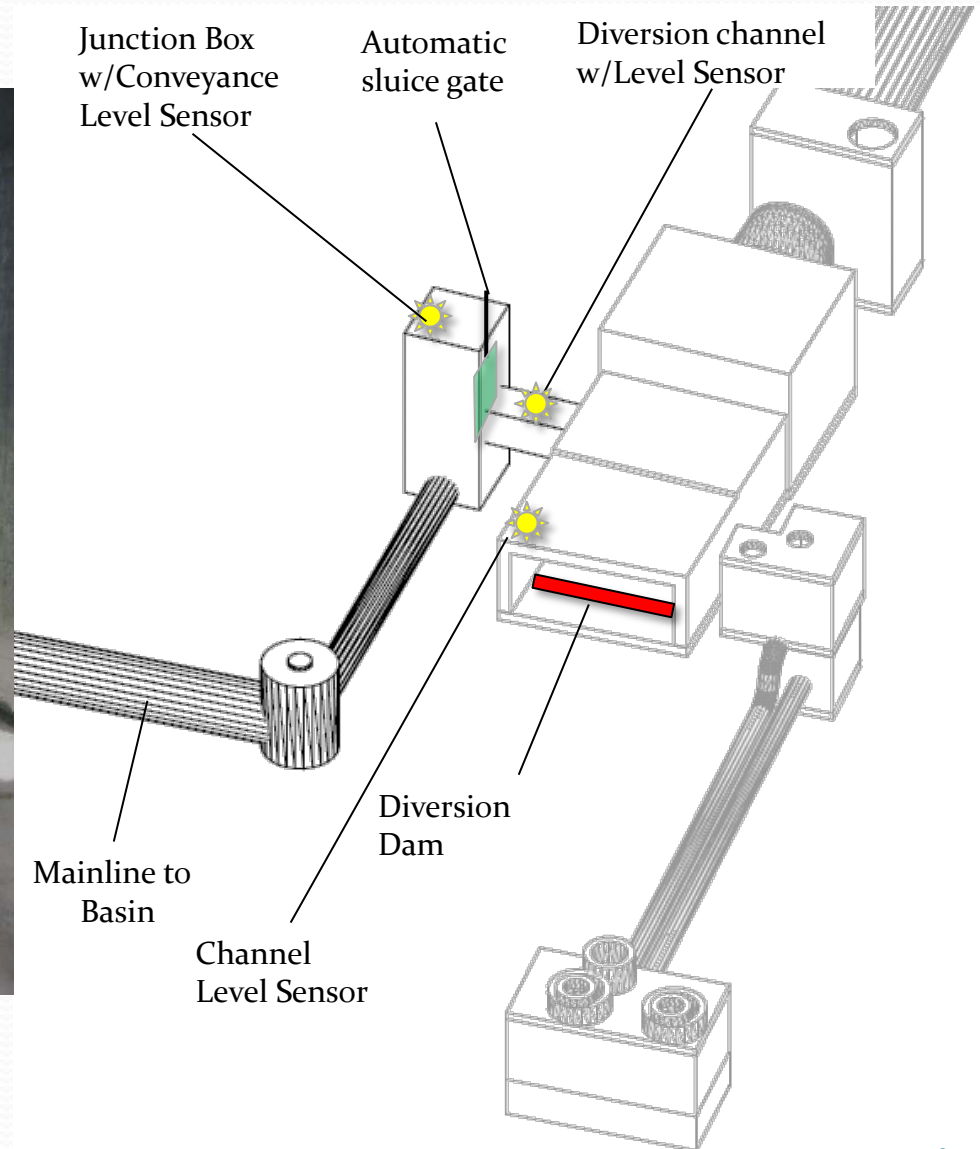
MSD's Amended Consent Decree: Logan Street CSO Basin & Conveyance System



MSD's Amended Consent Decree: Logan Street CSO Basin & Conveyance System



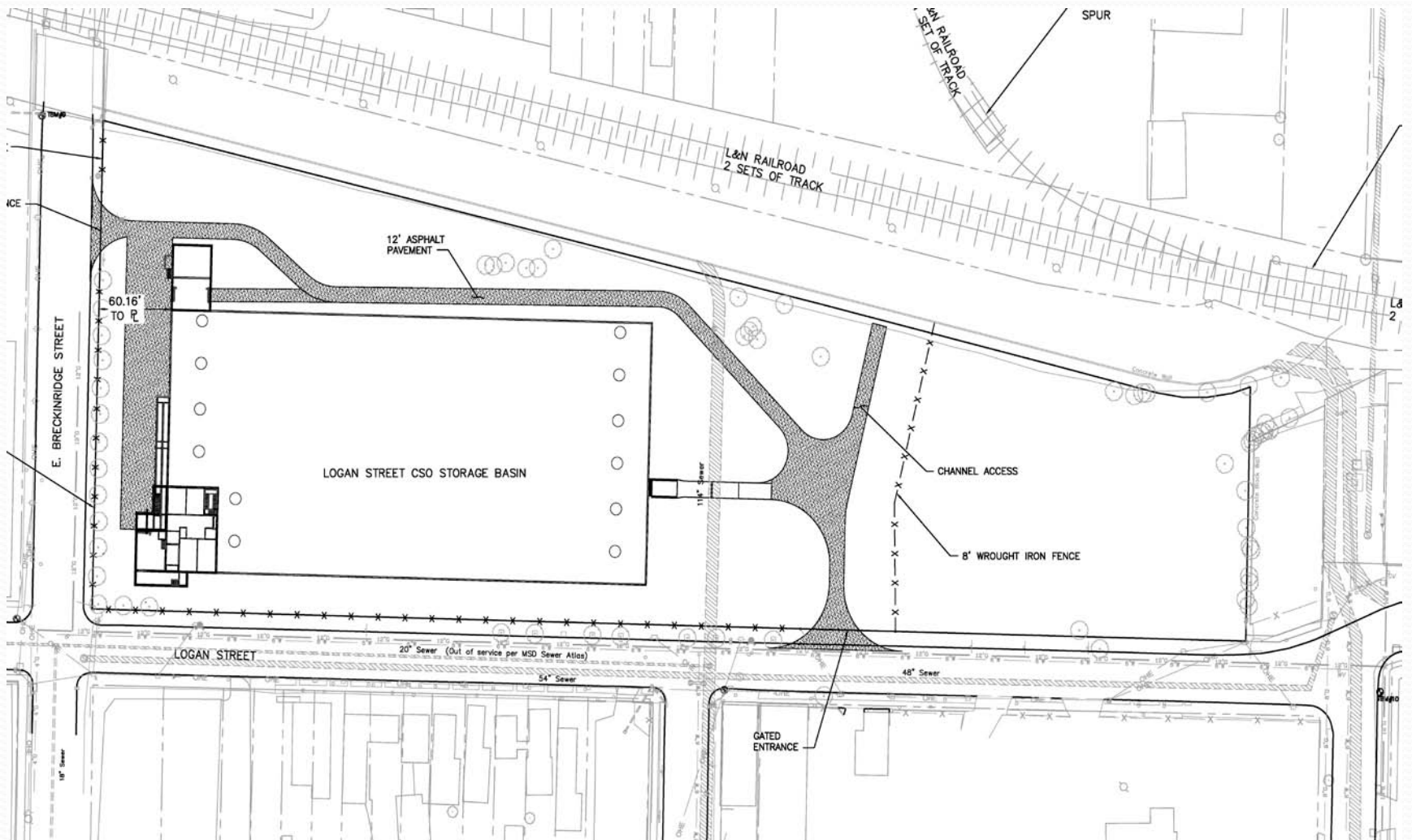
MSD's Amended Consent Decree: Logan Street CSO Basin & Conveyance System



MSD's Amended Consent Decree: Logan Street CSO Basin & Conveyance System



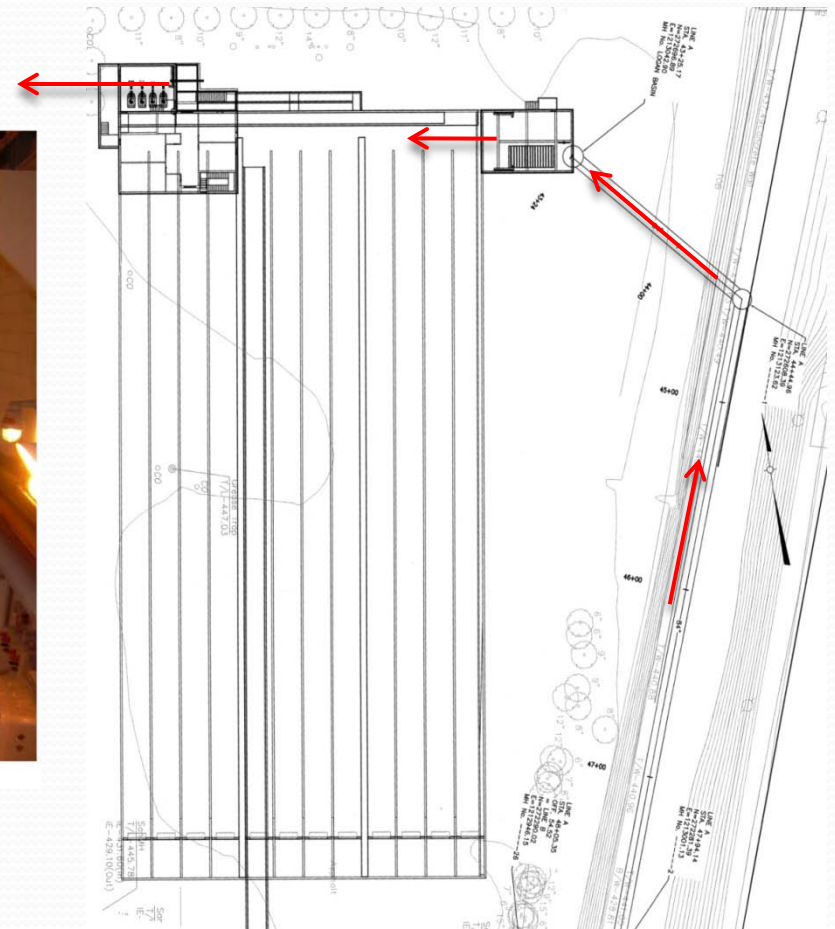
MSD's Amended Consent Decree: Logan Street CSO Basin & Conveyance System



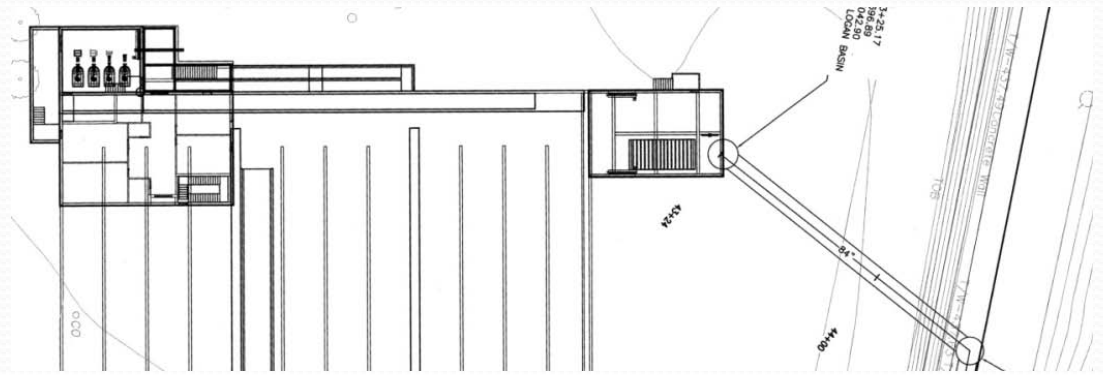
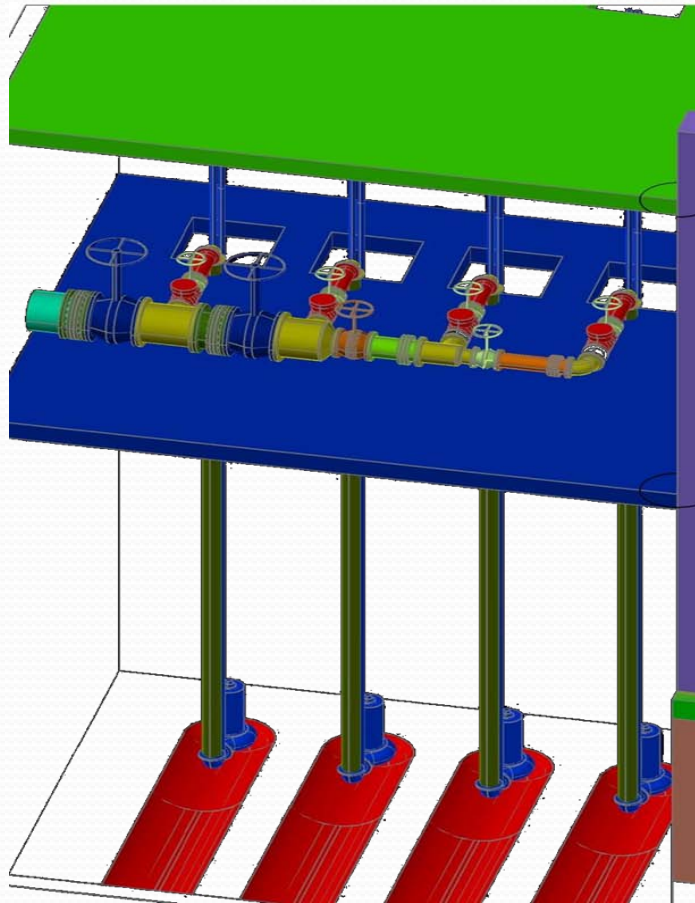
MSD's Amended Consent Decree: Logan Street CSO Basin & Conveyance System



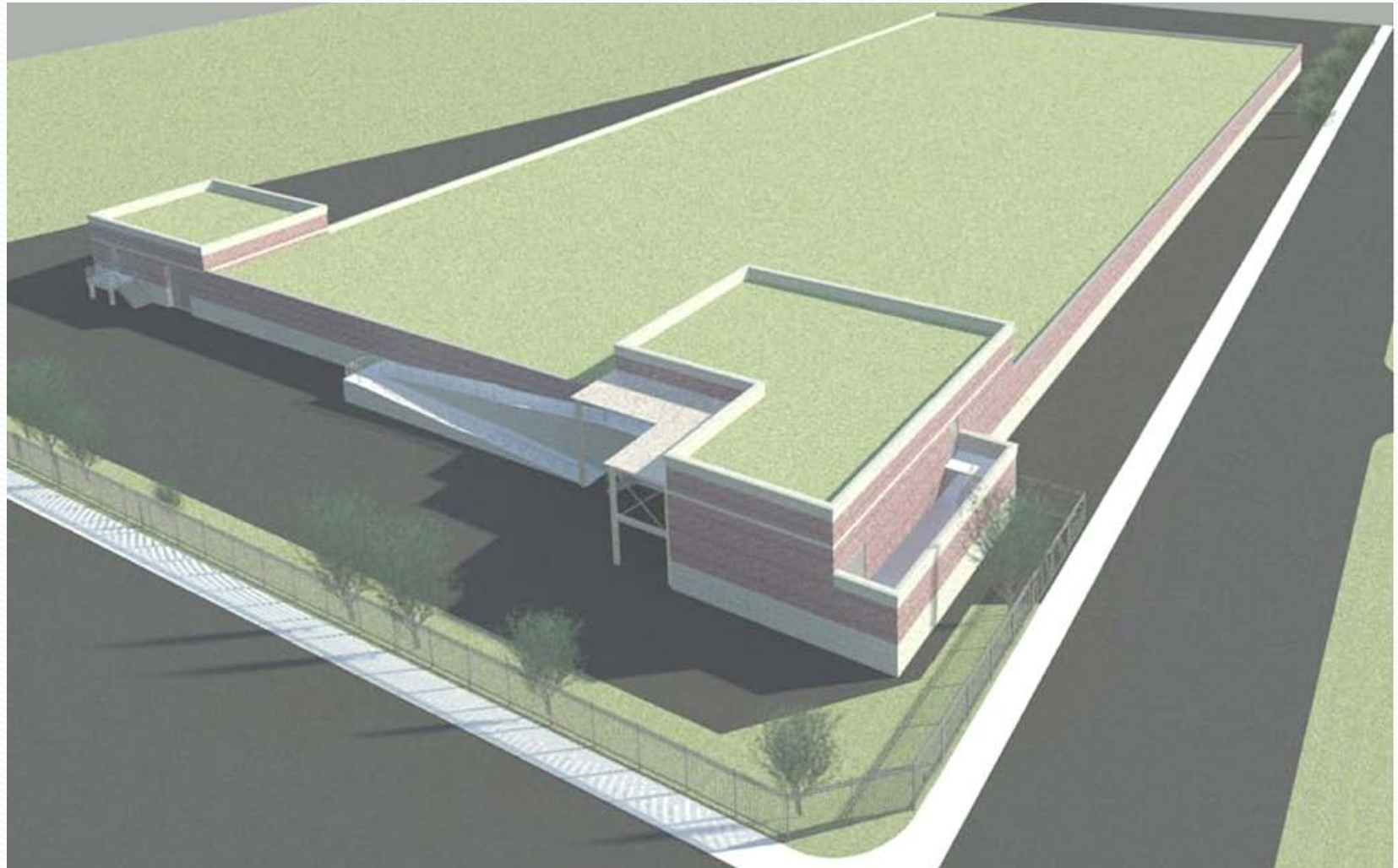
677 - GWK Screen Room Operating Level



MSD's Amended Consent Decree: Logan Street CSO Basin & Conveyance System

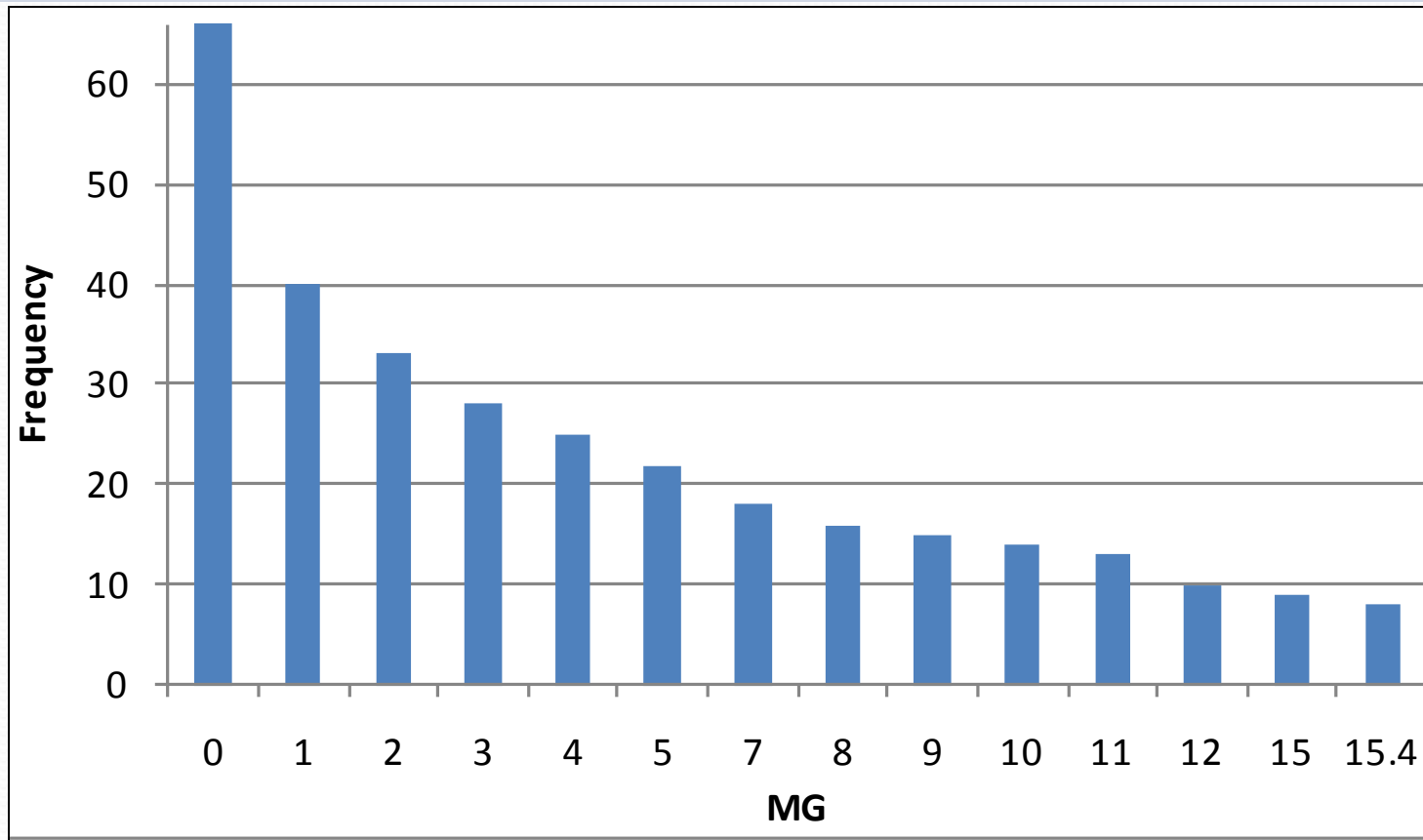


MSD's Amended Consent Decree: Logan Street CSO Basin & Conveyance System



MSD's Amended Consent Decree: Logan Street CSO Basin & Conveyance System

>MG	0	1	2	3	4	5	7	8	9	10	11	12	15	15.4
Freq.	66	40	33	28	25	22	18	16	15	14	13	10	9	8
% of stored events <=		45%	57%	66%	71%	76%	83%	86%	88%	90%	91%	97%	98%	



MSD's Amended Consent Decree: Logan Street CSO Basin & Conveyance System

- Current Project Budget is \$45,158,000, and completion of the project is currently scheduled/required by December of 2017.