

Southwestern Parkway CSO Basin

IOAP Public Input Meeting
September 24, 2013



Southwestern CSO Basin Project Overview

- Current Conditions
- Description
- Status
- Schedule
- Benefits
- Challenges



Southwestern CSO Basin Project Schedule

- Planning/Coordination Dec 2013
- Preliminary Design Dec 2014
- Final Design Dec 2015
- Advertise construction Jan 2016
- Construction Start Apr 2016
- Consent Decree deadline Dec 2018

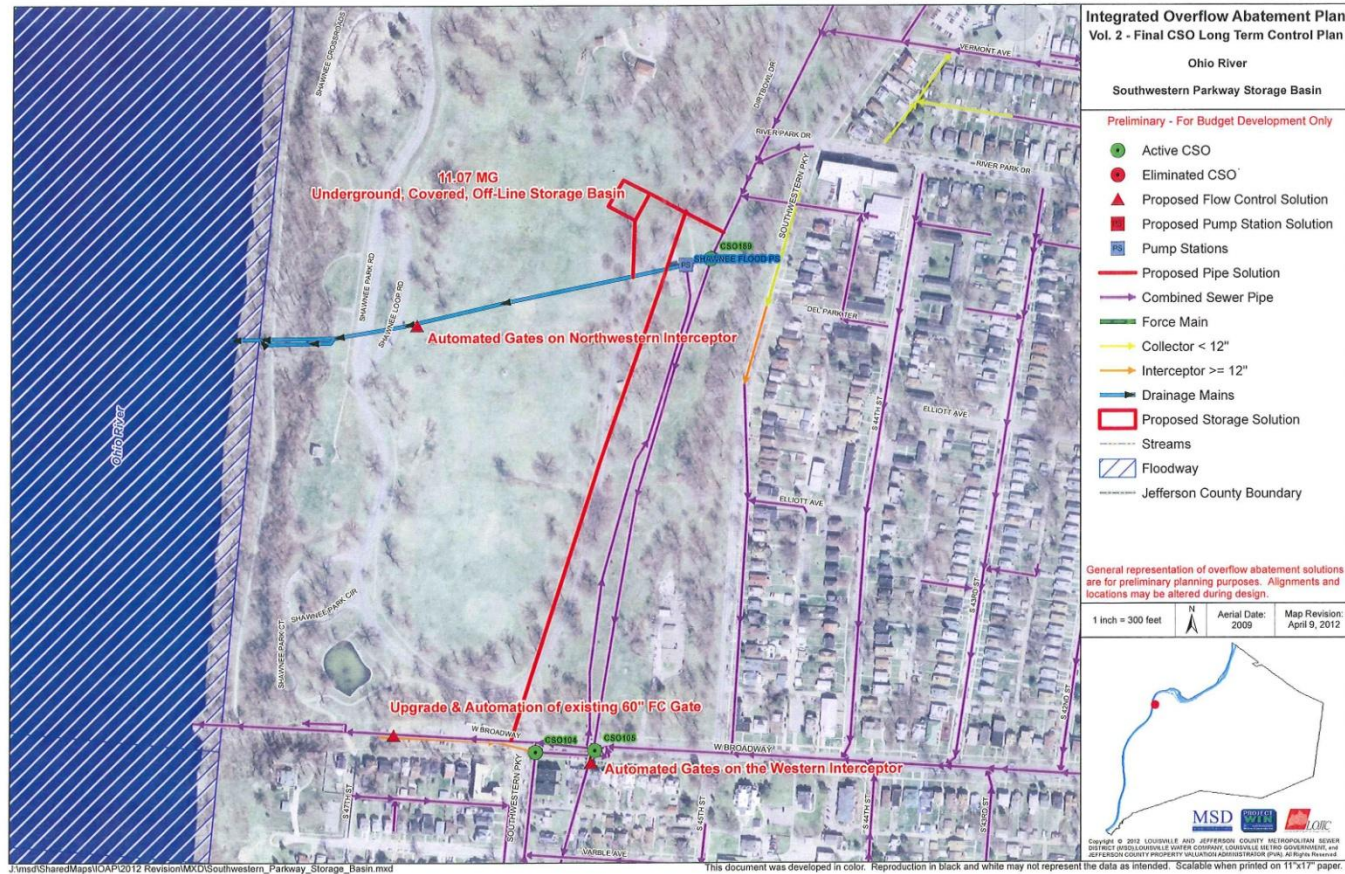
Southwestern CSO Basin

Current Conditions

| CSO# | Average # of Discharges Annually | Average Annual Overflow Volume (Million Gallons) |
|------|----------------------------------|--|
| 104 | 16 | 3.9 |
| 105 | 30 | 59.69 |
| 189 | 28 | 51.19 |

Southwestern CSO Basin

Current Status

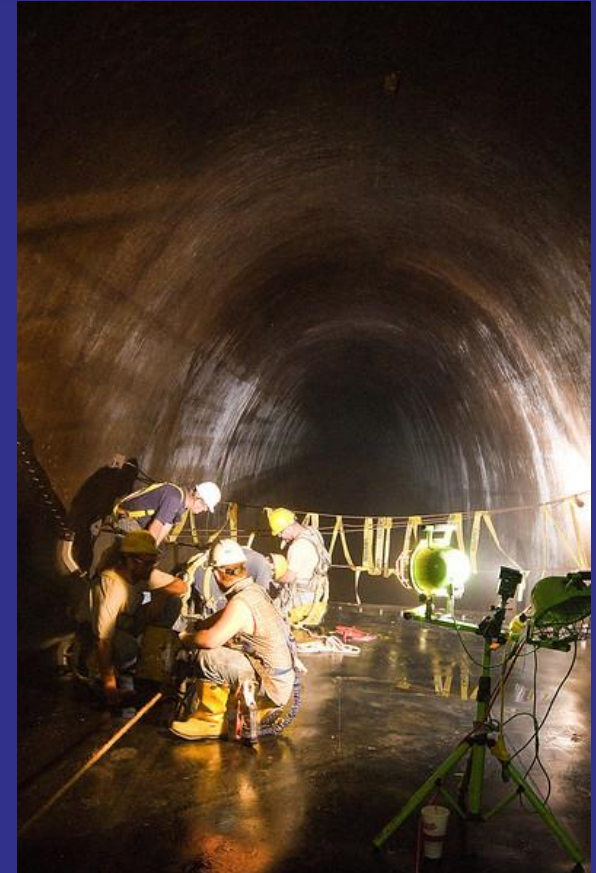


Southwestern CSO Basin

Current Status

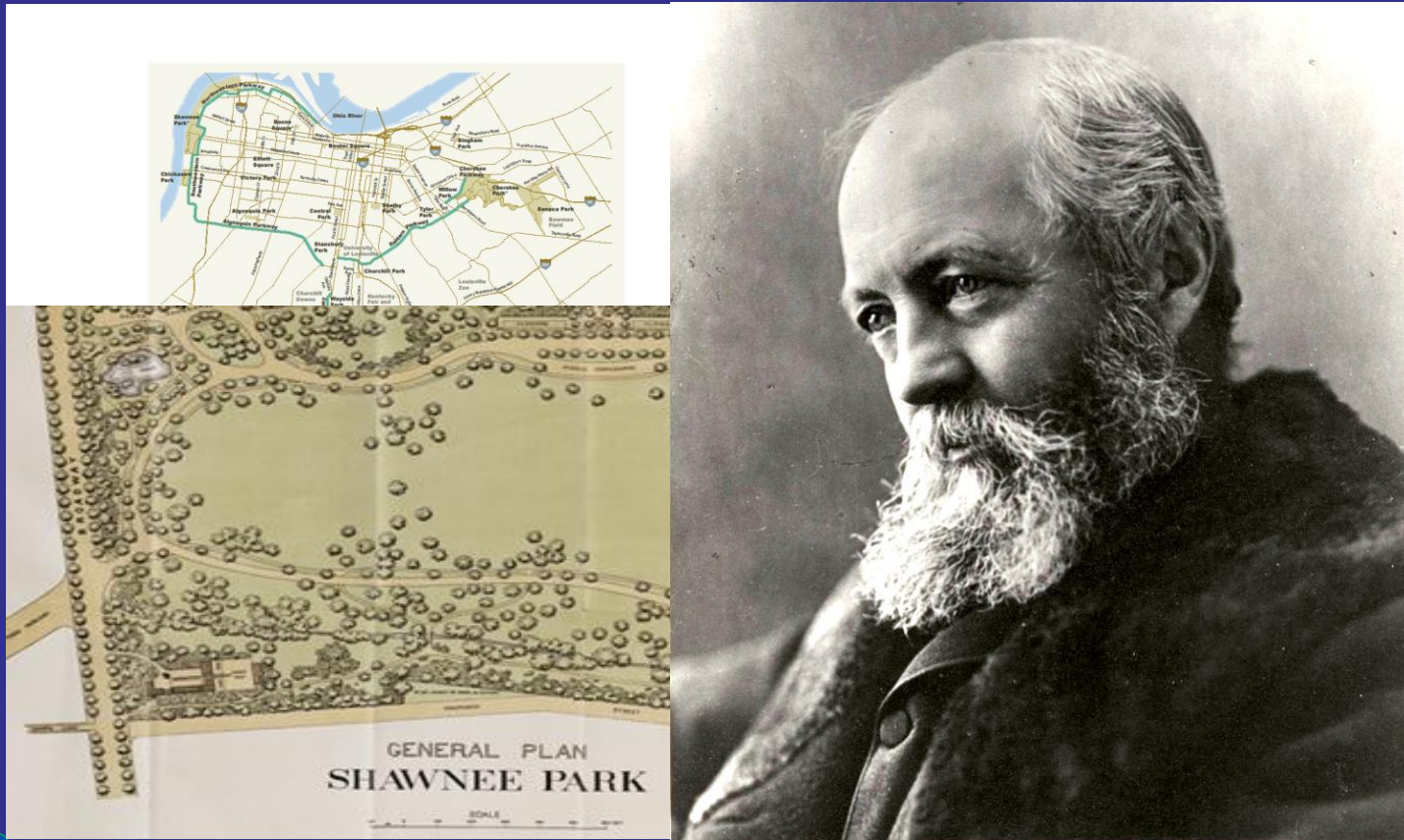
The Project/Plan identified in Integrated Overflow Abatement Plan (IOAP) calls for:

- Construction of gates/dams on existing large sewers to achieve approximately 8.8 million gallons of storage in the existing system during rain events.
- Construction of an 11.07 million gallon underground, covered concrete basin.
- Construction costs of these improvements are estimated at over \$33 million.
- These improvements result in an level of control of zero overflows in a typical year.



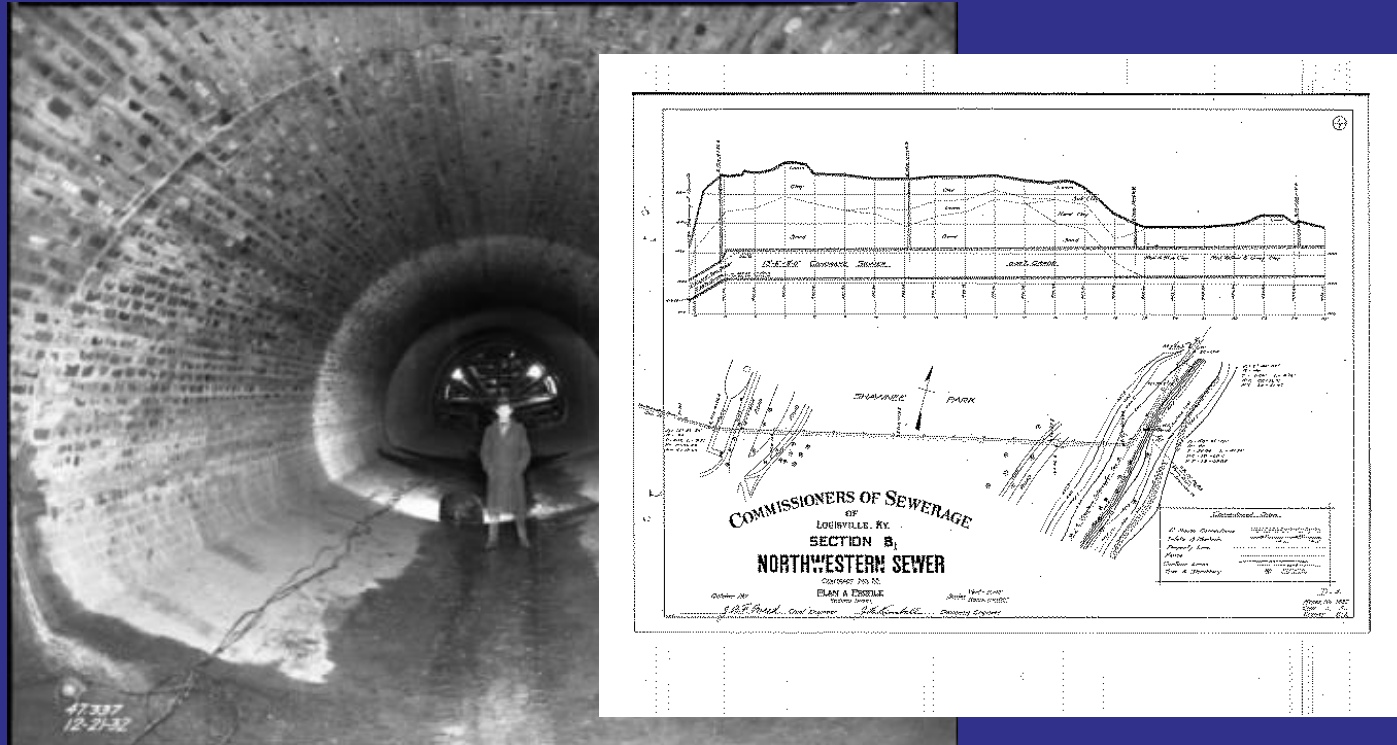
Southwestern CSO Basin Unique Project Opportunities

Shawnee Park was dedicated to the public in 1892



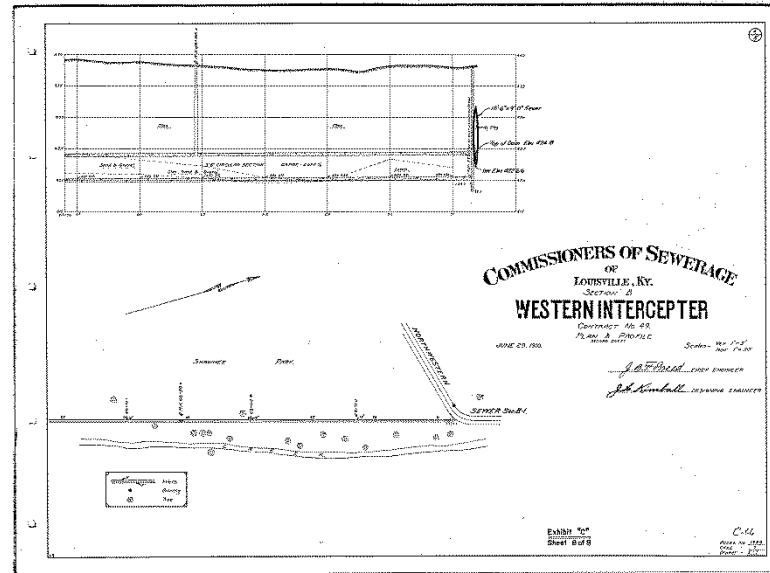
Southwestern CSO Basin

Existing MSD Infrastructure



Northwestern Sewer built in 1910 – 1911 through Shawnee Park

Southwestern CSO Basin Existing MSD Infrastructure



Western Interceptor Sewer built in 1910 – 1911 through Shawnee Park

Southwestern CSO Basin

Existing MSD Infrastructure



When originally constructed, these large sewers drained all sanitary waste and storm water directly to the river. There was no treatment or flood protection from the Ohio River

Southwestern CSO Basin Existing MSD Infrastructure

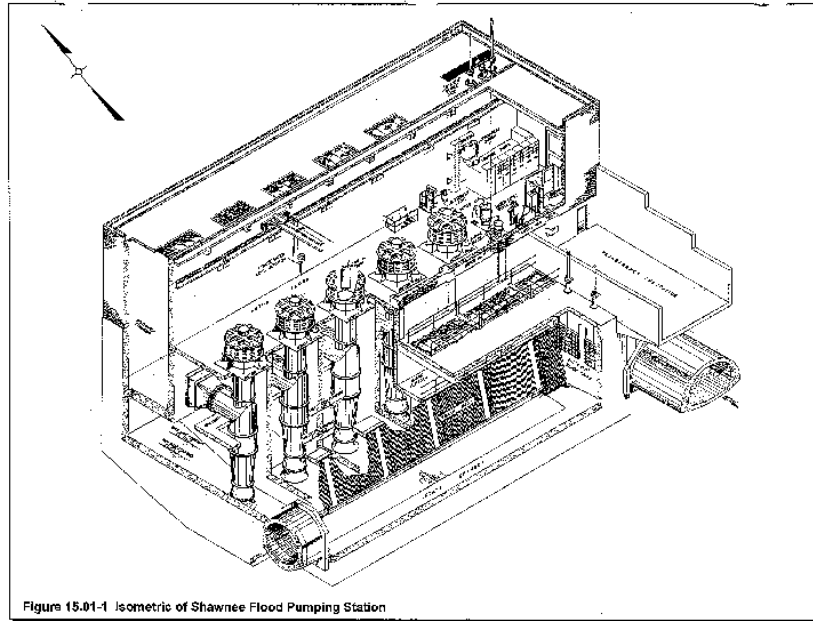
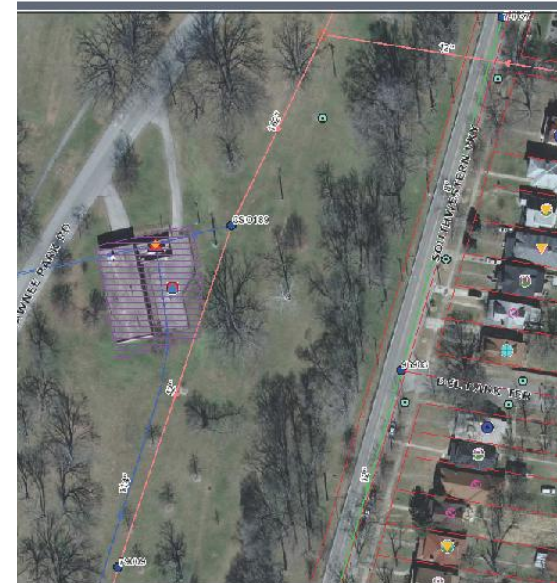


Figure 15.01-1 Isometric of Shawnee Flood Pumping Station



Shawnee FPS



PII Date 5/24/2013
LOIIC Quickmap

0 100
Distance are in feet



Shawnee Flood Pumping Station/Levee system
completed by U.S. Army Corps of Engineers in 1951

Southwestern CSO Basin Stakeholder Involvement

As part of our planning/design effort, MSD will include a variety of stakeholders in the process, including but not limited to:

- Metro Parks
- Olmstead Conservancy
- Local Government and Elected Officials
- You!

Southwestern CSO Basin Stakeholder Involvement

Examples of Potential Project Enhancements:

- Removal/relocation of overhead utilities to MSD facilities in Shawnee Park
- Inclusion of cosmetic improvements to the Shawnee Flood Pump Station
- Tree planting/tree replacement effort
- Repair/improvements to existing walking paths

Southwestern CSO Basin Program/Project Benefits & Challenges

- Capture & treat sewage/polluted water, resulting in less untreated water to the Ohio River
- Construct these mandatory improvements in a way that is affordable to the community, and respectful of our environment
- Minimize impacts to Shawnee Park during construction
- Result in an overall improvement to Shawnee Park when complete

Southwestern CSO Basin Project Schedule

- Planning/Coordination Dec 2013
- Preliminary Design Dec 2014
- Final Design Dec 2015
- Advertise construction Jan 2016
- Construction Start Apr 2016
- Consent Decree deadline Dec 2018

Southwestern CSO Basin

Public Input Sought

- Provide written comments by October 15, 2013
- Send comments via email
commentsIOAP@msdlouky.org

- Mail comments

MSD IOAP Project Comments

Attention: Project WIN Program Manager

700 West Liberty St.

Louisville, KY 40203

