

18th & Northwestern Parkway Storage Basin & Green Alternative

May 10, 2012



Overview

- Communicate
 - Basin Plan
 - Possible Alternative
 - The Path Forward
- Provide Input Opportunity During Planning



1.24 MG
\$5.1 Million
2017 Deadline

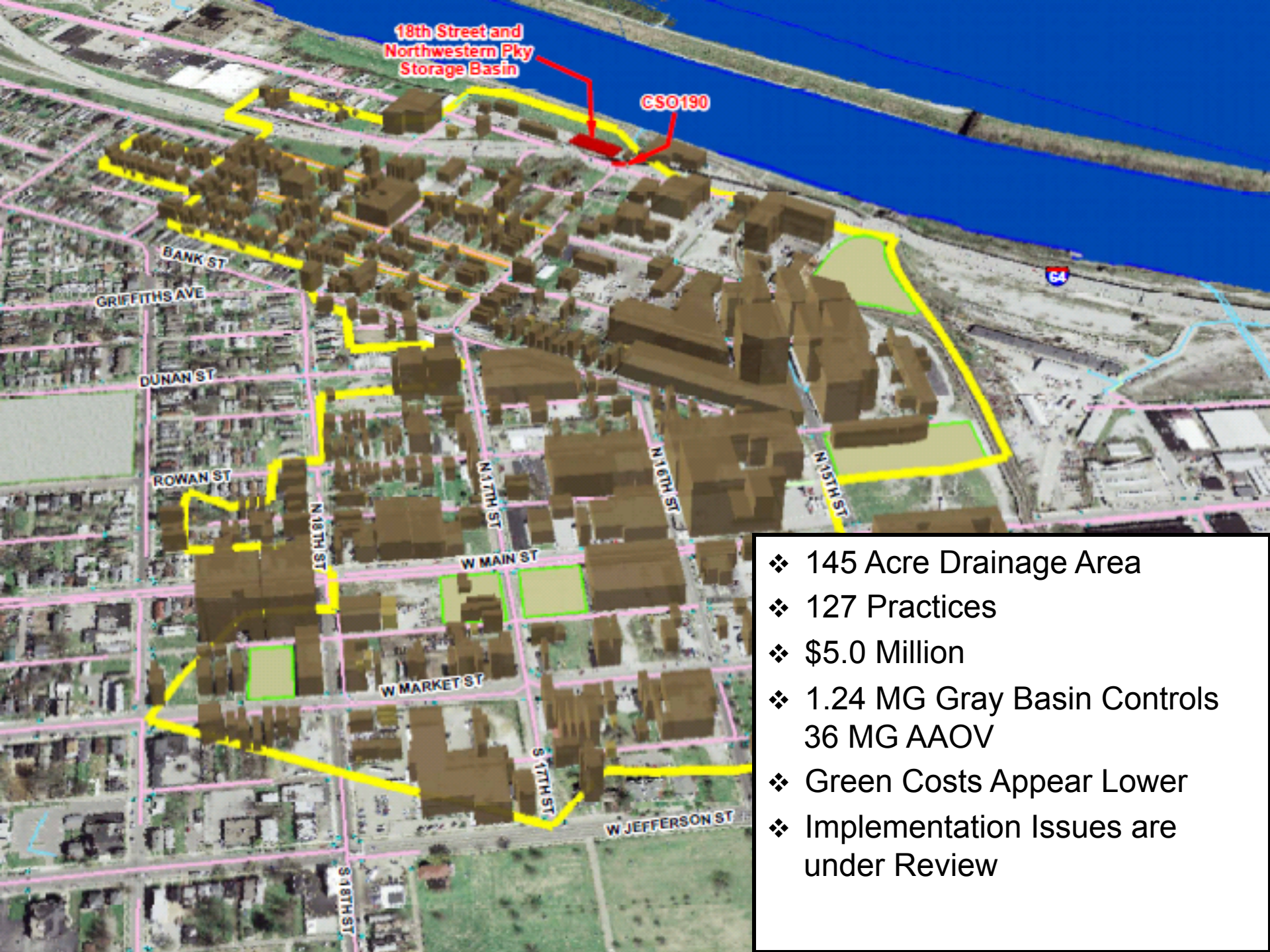
1.31 MG
Underground, Covered, Off-Line Storage Basin

17TH STREET FLOOD PS

CSO190

Green Infrastructure Alternative





18th Street and
Northwestern Pky
Storage Basin

CSO190

BANK ST

GRIFFITHS AVE

DUNAN ST

ROWAN ST

N 18TH ST

N 17TH ST

N 16TH ST

N 15TH ST

W MAIN ST

W MARKET ST

S 17TH ST

W JEFFERSON ST

S 18TH ST

- ❖ 145 Acre Drainage Area
- ❖ 127 Practices
- ❖ \$5.0 Million
- ❖ 1.24 MG Gray Basin Controls
36 MG AAOV
- ❖ Green Costs Appear Lower
- ❖ Implementation Issues are
under Review

Types of Practices

Type of Practice	Number	Private	Public
Bioswales	2	0	2
Infiltration Trenches	35	9	26
Permeable Pavement Strips	30	6	24
Rain Gardens	1	1	0
Tree Boxes	59	0	59
Total	127	16	111

Note: To route impervious areas into both public & private practices, over 200 long term agreements are necessary

Storage Basin Facts

- Centralized overflow control & maintenance
- Minimal neighborhood disruption compared to green
- Limited public visibility post construction save for a maintenance building
 - (enclosed above-ground storage building possible)
- Known and predictable long-term performance
- No partnership agreements needed
- Limited additional community benefit beyond water quality enhancement

Green Infrastructure Facts

- Increased tree canopy
- Reduced wastewater treatment costs
- Improved streets and alleys
- Possible additional benefits
 - Pocket parks
 - Use of vacant and abandoned lands
 - Improved safety
 - Community gardens
 - Neighborhood rejuvenation
- Private Property Use of Green
- Unproven long-term performance
- Hundreds of partnership agreements needed
- Decentralized facility construction and maintenance



Similar Project for Comparison

- ❖ 28 Acres
- ❖ 0.04 MG Gray to 0.16 MG Green
- ❖ Green approx. half cost of gray





Strategic Partners for Green

- Louisville Metro
- Metro Police
- Kentucky Waterways Alliance
- Historic District
- Council Districts 4 & 5
- Habitat for Humanity
- Brightside
- Metro Parks
- Portland Elementary
- Neighborhood Associations
- Louisville Land Bank
- 15,000 Farmers

Moving Forward

- Continue study of alternative overflow control
- Get Direction from Executive Staff
- Begin Outreach Efforts (Gray or Green)



Moving Forward

- Public involvement – Today
 - Communicate about Alternatives
 - Solicit Feedback/Suggestions on Chosen Overflow Control Strategy for this Area
- Public Involvement – Next Phase
 - Communicate Chosen Strategy and Upcoming Opportunities for Discussion
 - Solicit Feedback/Suggestions

Public Input Sought

- Comment tonight (written or video)
- Provide written comments by June 15, 2012
- Send comments via email

commentsIOAP@msdlouky.org

- Mail comments

MSD IOAP Project Comments

Attention: Project WIN Program Manager

700 West Liberty St.

Louisville, KY 40203

