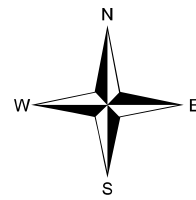
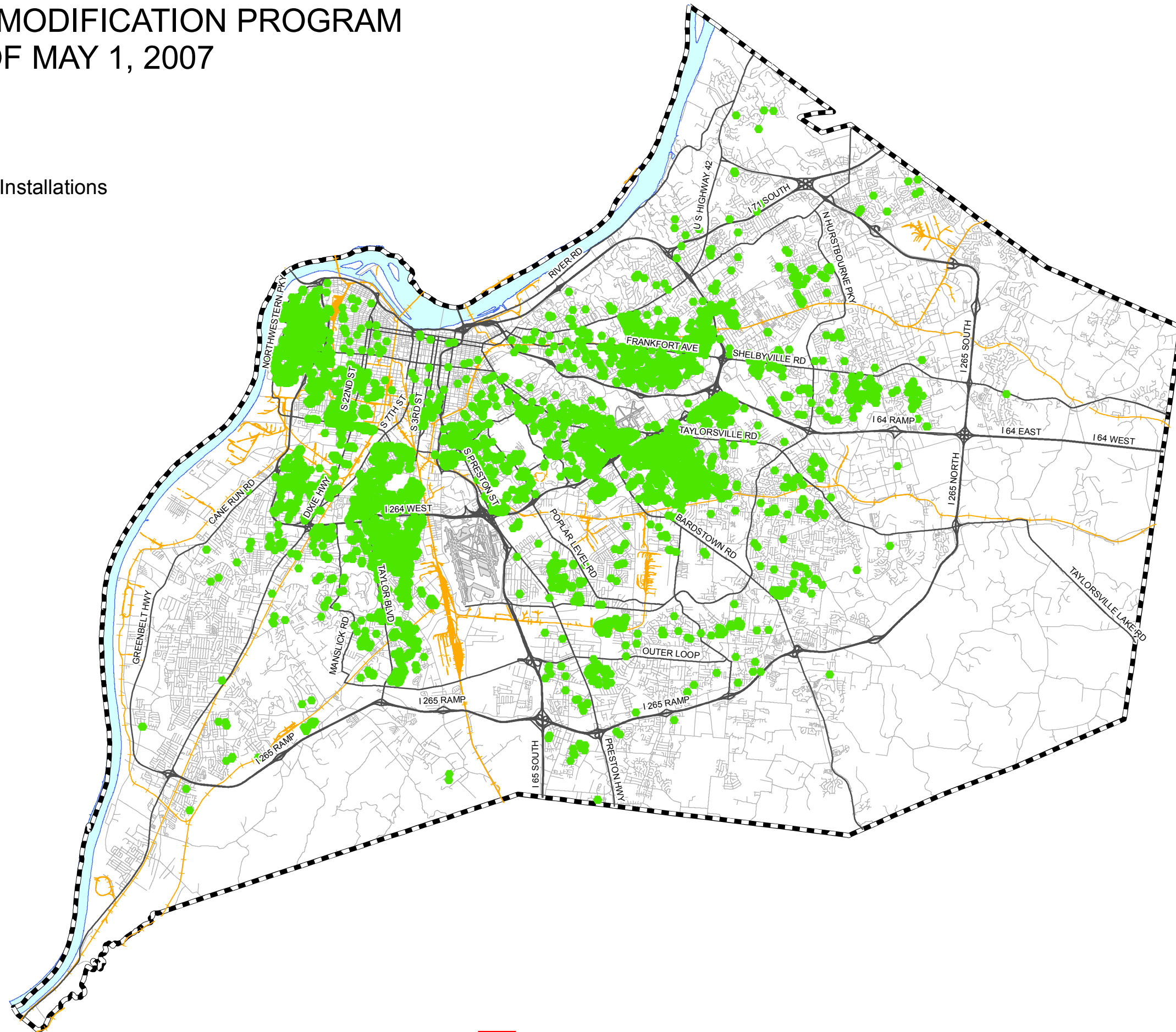


# MSD PLUMBING MODIFICATION PROGRAM AS OF MAY 1, 2007



● Backwater Valve Installations



Copyright (c) 2007, LOUISVILLE AND JEFFERSON COUNTY METROPOLITAN SEWER DISTRICT (MSD), LOUISVILLE WATER COMPANY (LWC), LOUISVILLE METRO GOVERNMENT, and JEFFERSON COUNTY PROPERTY VALUATION ADMINISTRATOR (PVA).  
All Rights Reserved.  
Louisville/Jefferson County Information Consortium (LOJIC), a Jefferson County, Kentucky, based cooperative project of: Louisville/Jefferson Metro Government, Louisville Water Company, Metropolitan Sewer District, Property Valuation Administrator.  
No part of this map may be reproduced or transmitted in any form or by any means, electronic or mechanical, including photocopying and recording, or by any information storage or retrieval system, except as expressly permitted in writing by MSD.

