



WATERWAY PROTECTION TUNNEL

An Innovative Alternative to Four
Combined Sewer Overflow Basins

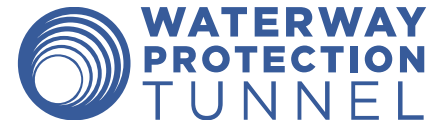
August 28, 2018



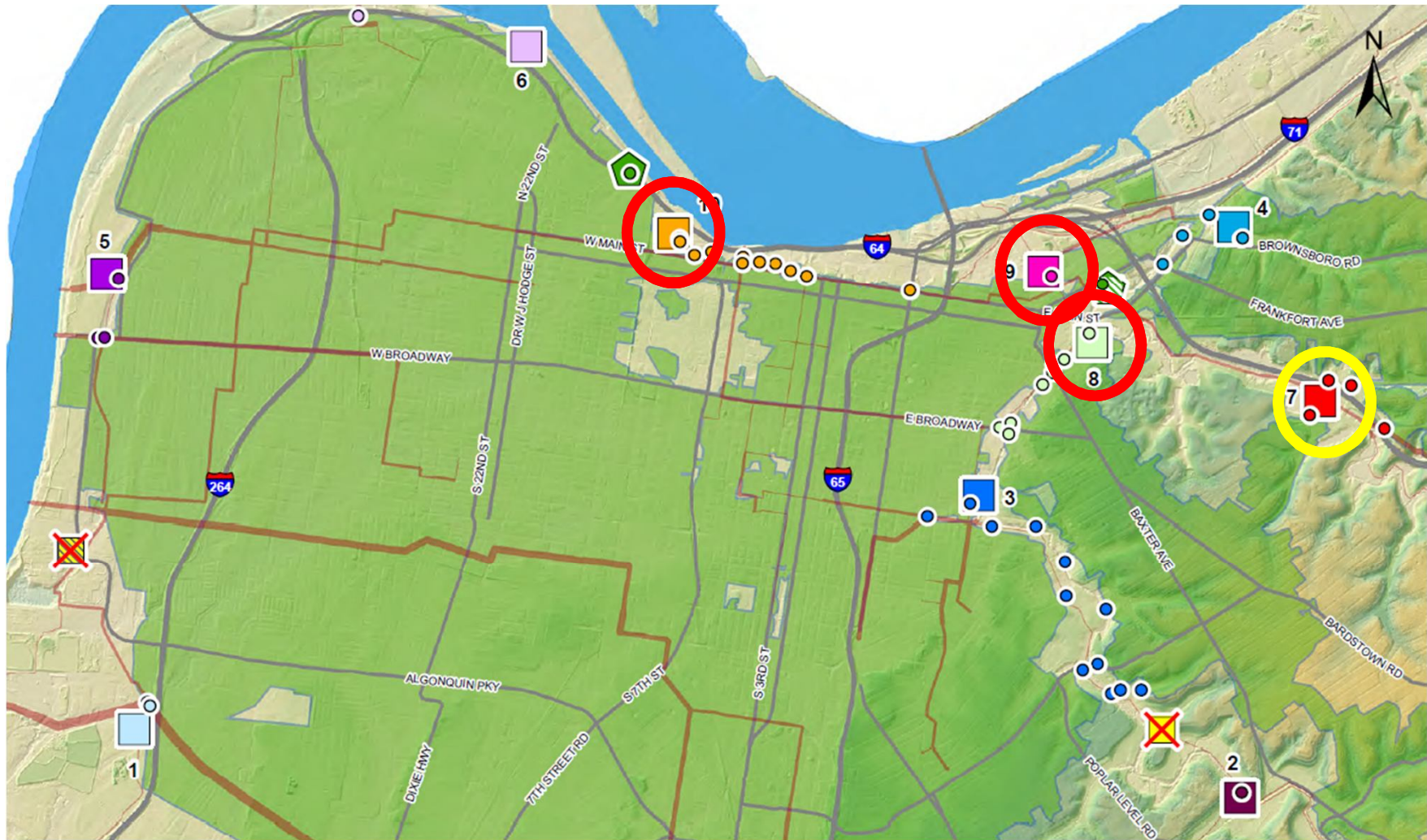
Agenda

- Introductions
- Project Overview
- Grinstead Site
- Discussion

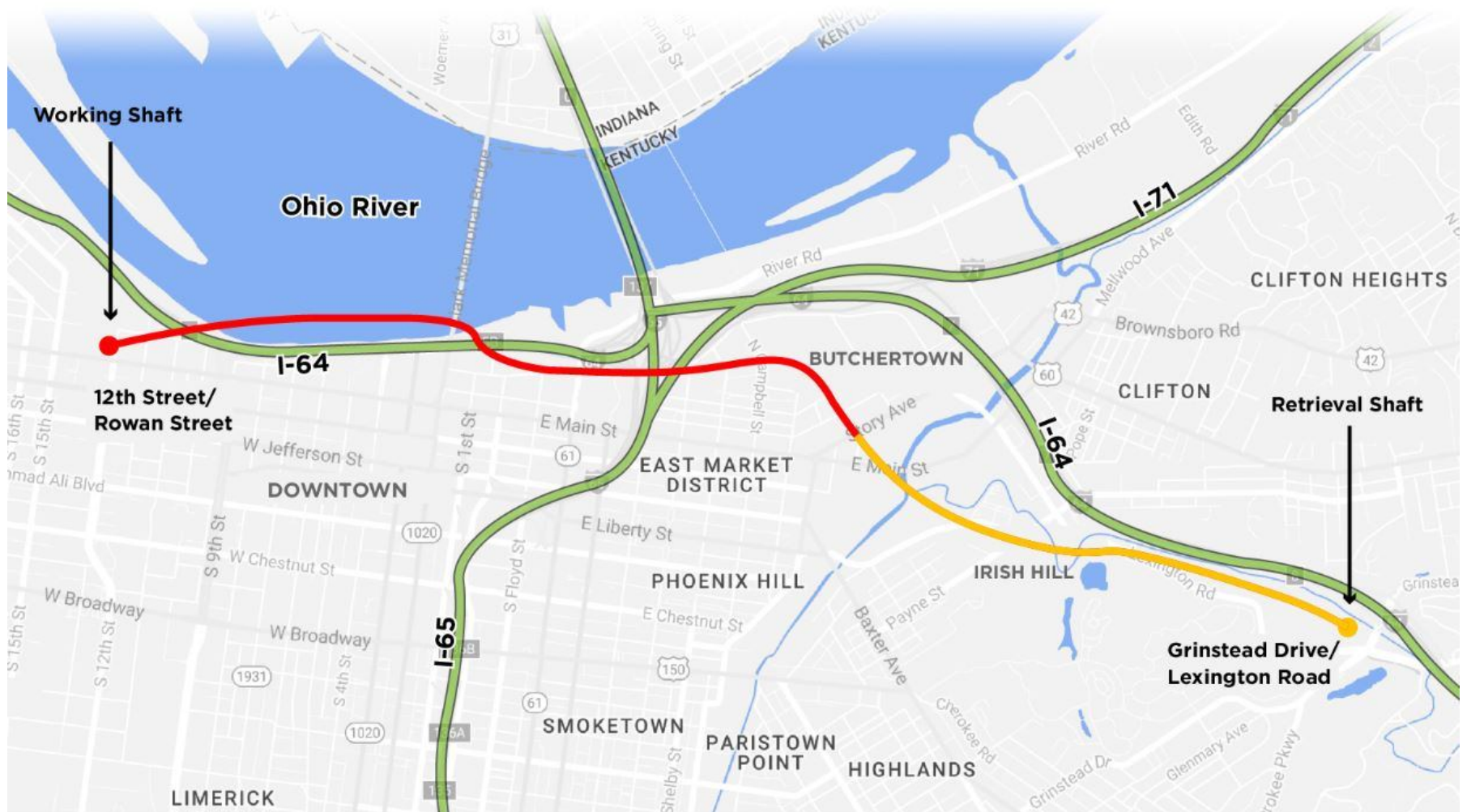
Overview



Waterway Protection Tunnel Overview



Waterway Protection Tunnel Alignment



Waterway Protection Tunnel Overview

4.0 miles long

20 foot in diameter

6 drop shafts

18 stories below ground

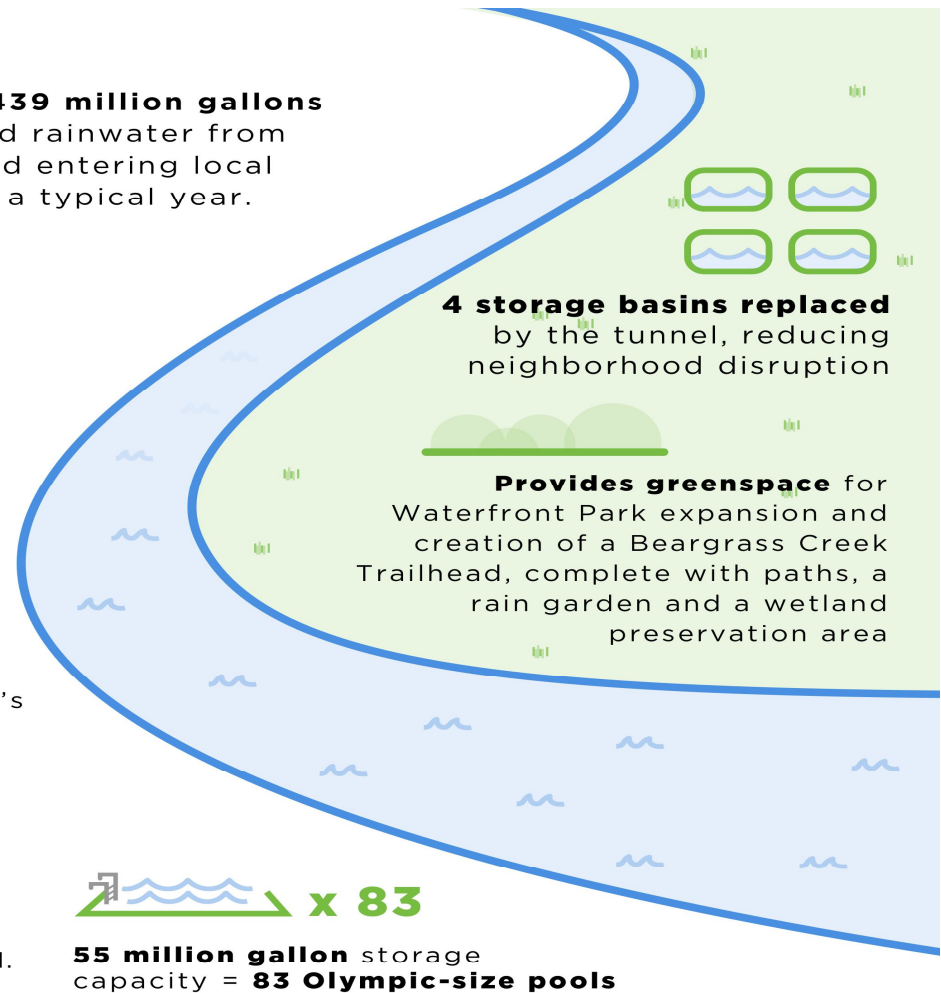
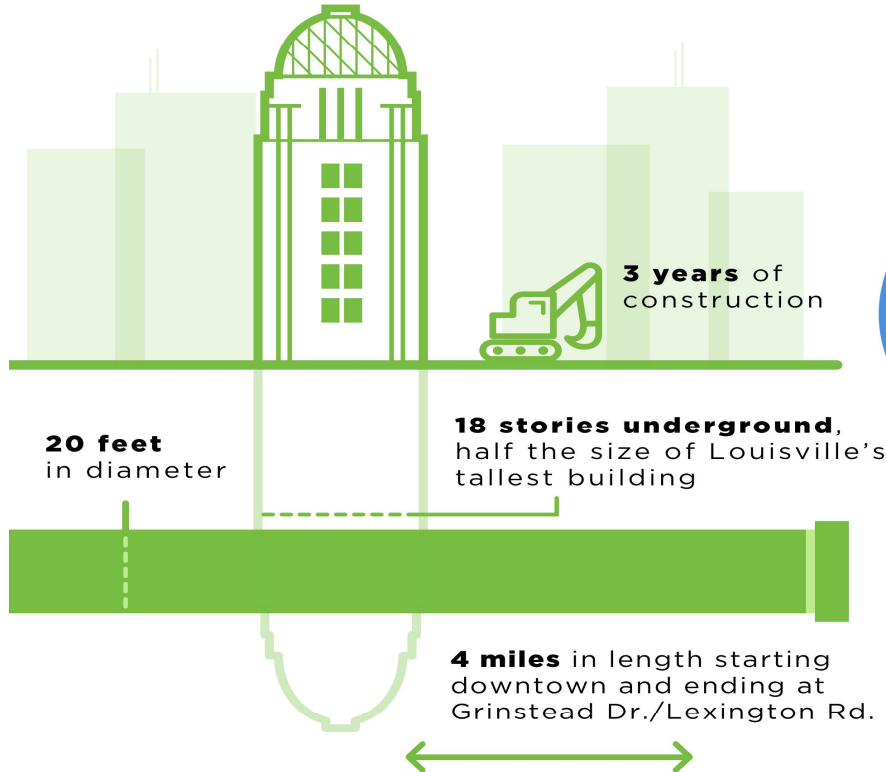


Example: Indianapolis DigIndy project

Waterway Protection Tunnel Overview



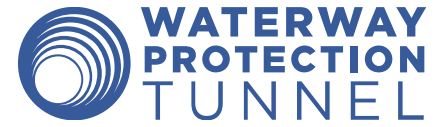
will prevent **439 million gallons** of sewage and rainwater from combining and entering local waterways in a typical year.



The Waterway Protection Tunnel is a key part of MSD's plan to capture and treat 98 percent of the combined sewer overflow volume by **2020**.



Grinstead Site



Grinstead Public Meetings

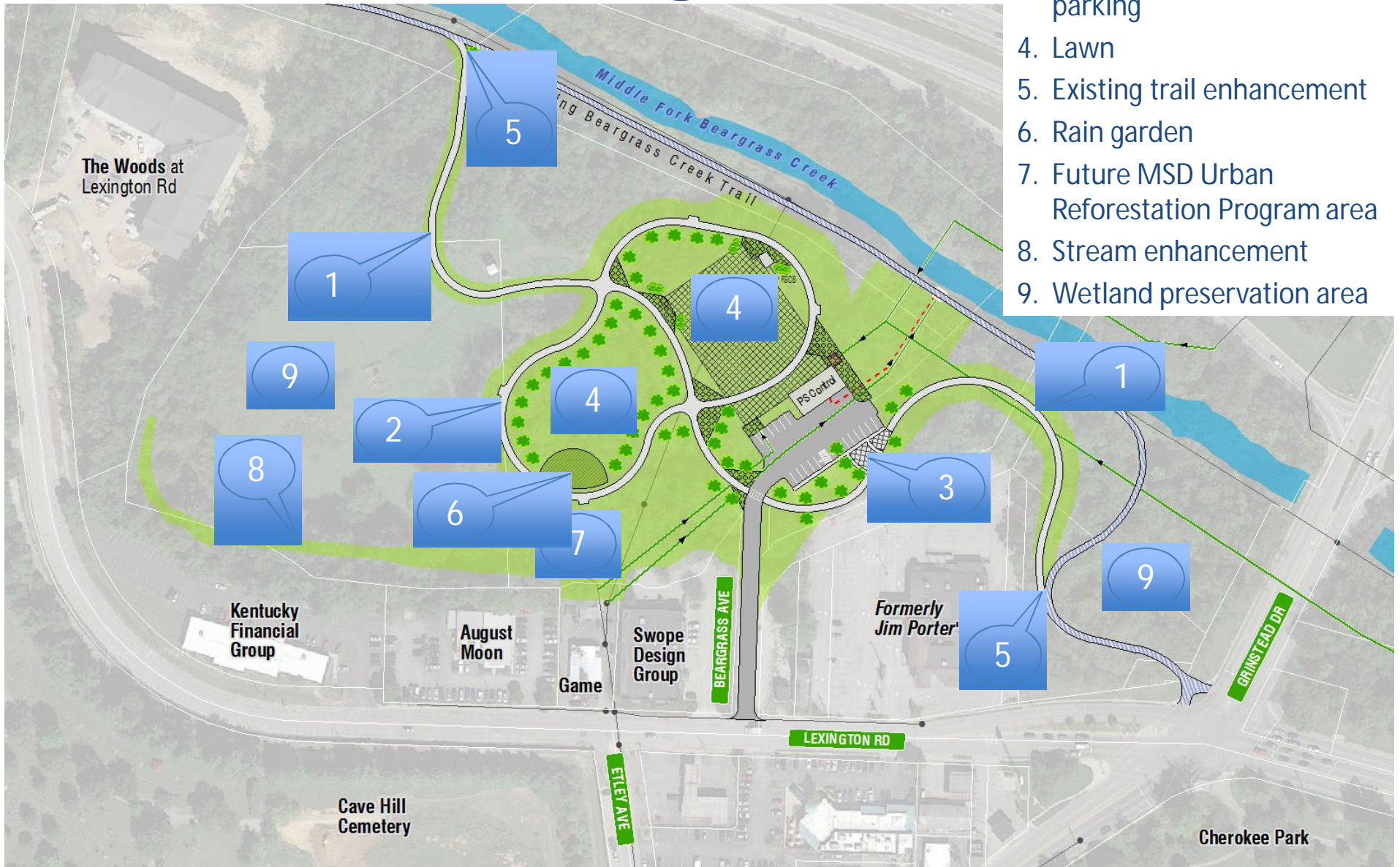
Phase	Date
Orientation	September 16, 2014
Conceptual Design	March 10, 2016
Advanced Design	November 15, 2016
Pardon our Dust	July 25, 2017
WPT Extension Update	August 28, 2018

As shown at the Advanced Design Meeting on 11/15/16

Grinstead Site – Original

LEGEND

1. Through trail
2. Loop trail
3. Trailhead with public parking
4. Lawn
5. Existing trail enhancement
6. Rain garden
7. Future MSD Urban Reforestation Program area
8. Stream enhancement
9. Wetland preservation area



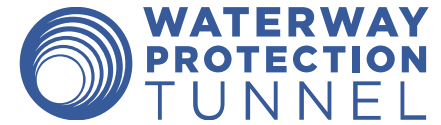
Grinstead Site – Revised

LEGEND

1. Through trail
2. Loop trail
3. Trailhead with public parking
4. Lawn
5. Existing trail enhancement
6. Rain garden
7. Future MSD Urban Reforestation Program area
8. Stream enhancement
9. Wetland preservation area
10. WPT shaft enclosure area



Additional Information



Waterway Protection Tunnel Website

For additional information please visit MSD's Tunnel Website (louisvillemsd.org/tunnel) and sign up for MSD's Tunnel Newsletter, The Boring News.



Discussion

