



Progressive Design Build Teams



ULLIMAN SCHUTTE

BURGESS & NIPLE

SHAWNEE PARK BASIN PROJECT

STAKEHOLDER ADVISORY COMMITTEE MEETING NO. 10

January 15, 2019



Reminders

- Feel free to quote yourself, not others. However, if you want to be quoted, be sure to say so.
- Qualify your comments if further vetting is required
- *All concerns will be heard.* Some upon request, others at the end.
- *The Parking Lot – Distracting, but important non-agenda items*

The background of the slide is a faded photograph of a construction site. In the foreground, there are several large, grey concrete pipes stacked in a row. In the background, a yellow excavator is visible, partially obscured by the pipes. The top of the image shows green trees against a blue sky. A dark green horizontal band is overlaid across the middle of the image, containing the title text.

Community Engagement Recap

- Proactive and Transparent Community Engagement Strategy
- SAC forum to assure community concerns are addressed during the construction of the basin.
- MWBE outreach sessions
- Notifications through Door to Door, Community News Letter and Neighborhood organizations
- Consistent one on one meetings with concerned Southwestern Parkway Residents
- Informative Website maintained throughout the project
- Responsive 800 number to solve resident concerns
- Attended District 5's Advisory Committee Meetings
- Active at the Annual Dirt Bowl, Juice Bowl and Family Day – handed out project basketballs

The Shawnee Park Basin Project

will create a cleaner river, provide new amenities, and preserve the historic nature of Shawnee Park. The improved Shawnee Park will feature:

- Premium landscaping
- Construction of an open air pavilion and restroom facility
- New paved parking at sprayground
- Restored loop road
- Restored athletic courts and ball house
- Renovated lily pond

Over the next 90 days* expect:

- Continued digging and trucking
- Installing metal sheet tiebacks
- Construction of basin foundation



*Posted August 31, 2017



METRO PARKS IMPROVEMENTS

Design and Construction

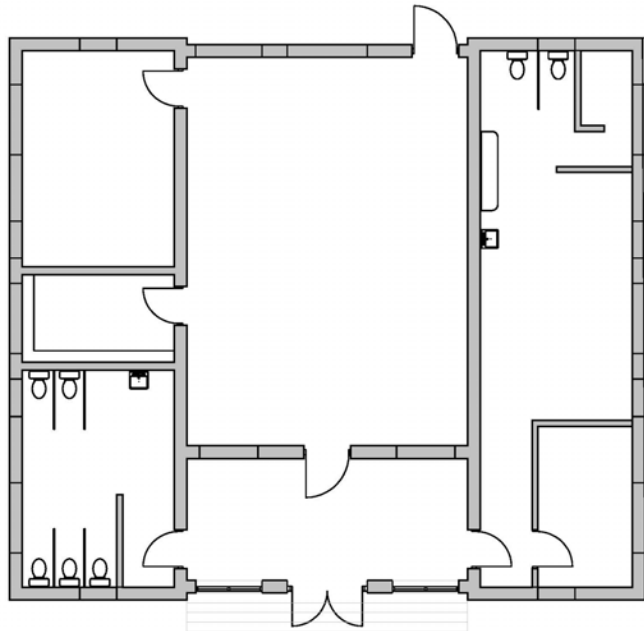
Metro Parks Improvements

	<i>Anticipated</i>	
	<u><i>Start</i></u>	<u><i>Finish</i></u>
• <i>Renovated Athletic Courts</i>		
• <i>Dirt Bowl</i>	<i>Apr 2017</i>	<i>Complete</i>
• <i>Basketball Courts</i>	<i>May 2017</i>	<i>Complete</i>
• <i>Harmony Field</i>	<i>Mid Oct 2017</i>	<i>Spring 2019</i>
• <i>Improved Hornung Field</i>	<i>Mid Sep 2017</i>	<i>Spring 2019</i>
• <i>Lily Pond</i>	<i>Mid Aug 2017</i>	<i>Spring 2019</i>
• <i>Ball House</i>	<i>Jun 2018</i>	<i>Spring 2019</i>

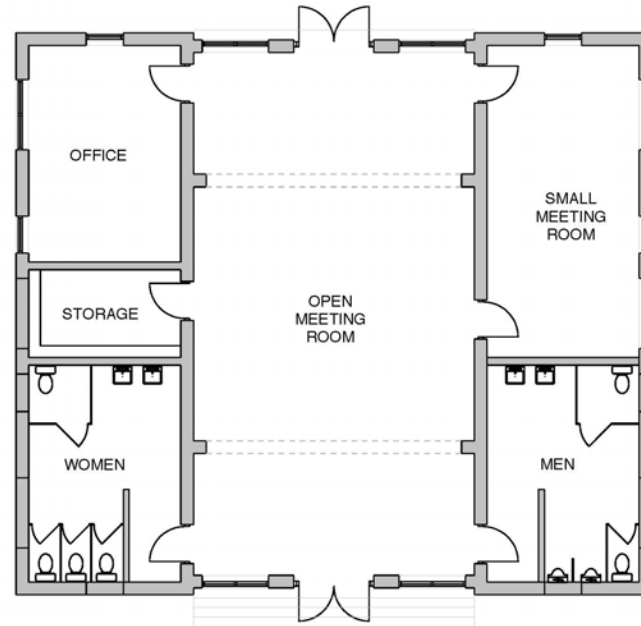
Metro Parks Improvements



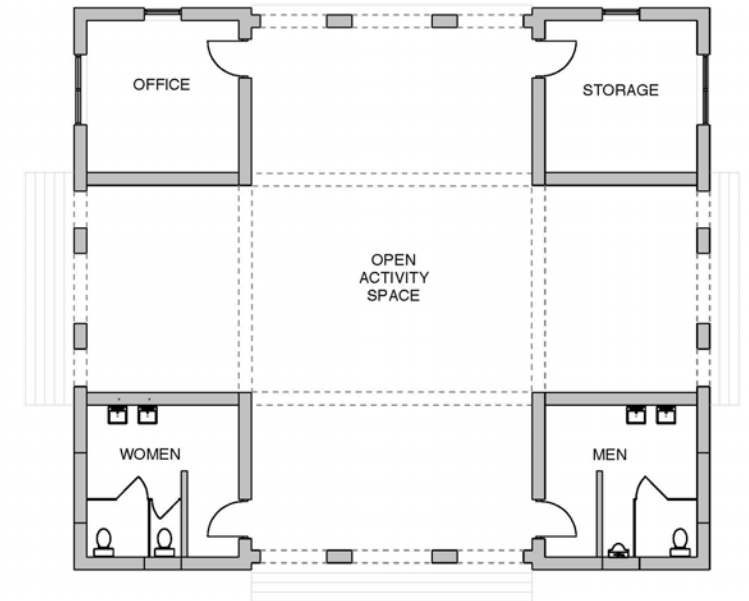
Ball house



EXISTING



OPTION A



OPTION B

A background image of a construction site featuring a yellow bulldozer and stacks of large concrete pipes. A semi-transparent green horizontal banner is overlaid across the middle of the image, containing the word 'CONSTRUCTION' in white, bold, uppercase letters.

CONSTRUCTION



Shawnee Park

Shawnee Park Cir

Shawnee Park Rd

W Broadway

S 45th St



CSO 104/105

Basin

Junction Chamber

CSO 189

Hornung Field

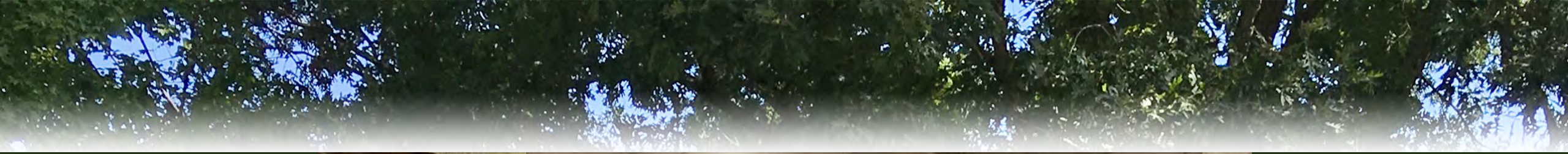
Not to Scale

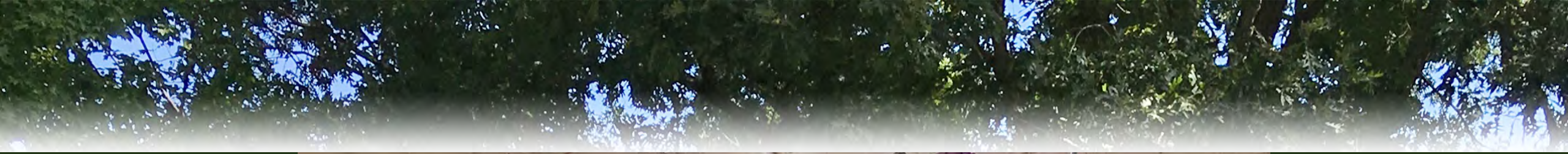


Basin

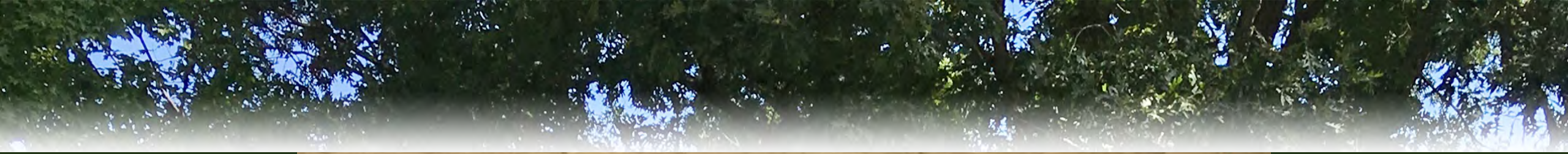














CSO 104/105

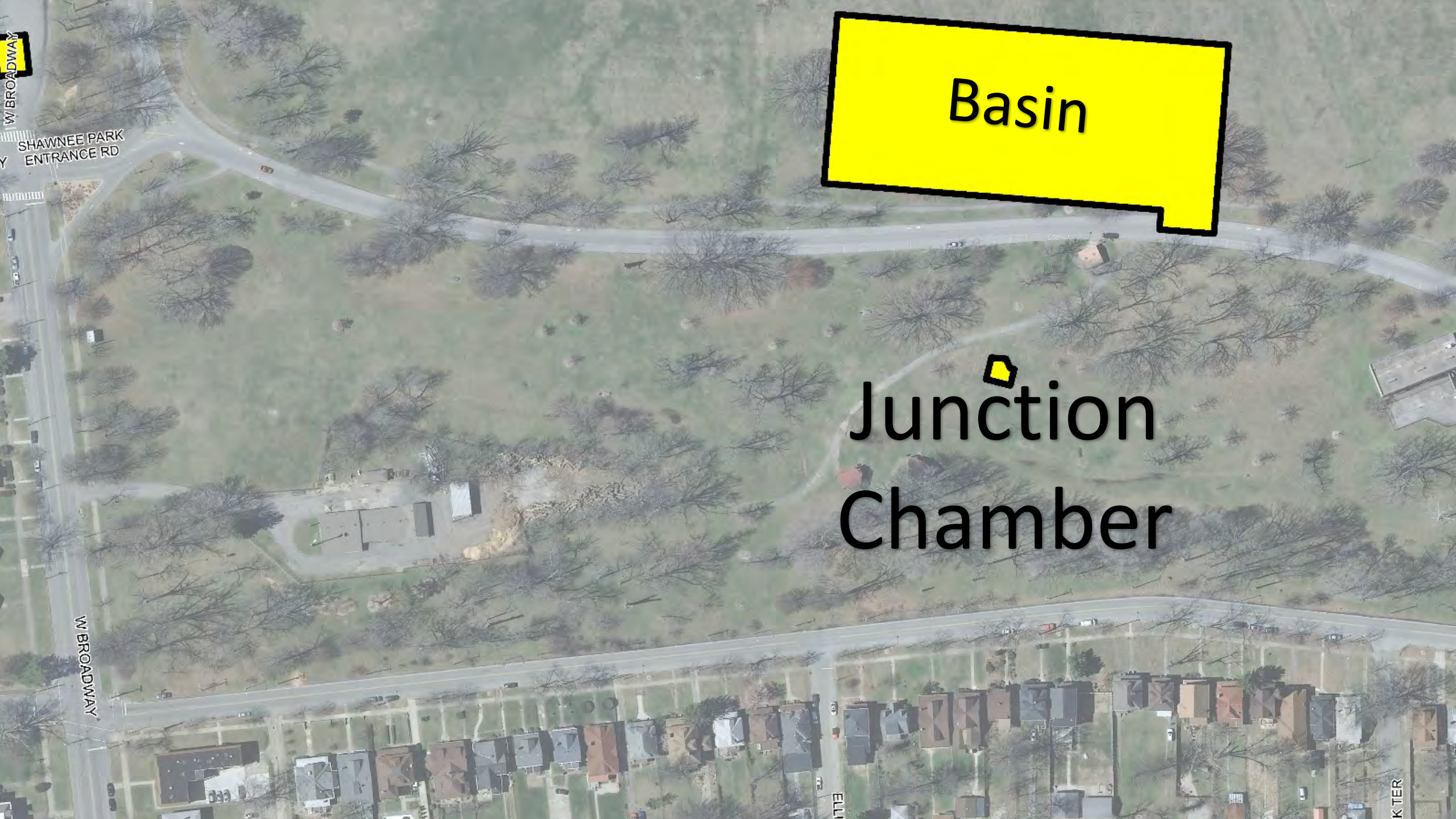
Basin

Junction Chamber

CSO 189

Hornung Field

Not to Scale



Basin

Junction Chamber

W BROADWAY

SHAWNEE PARK
ENTRANCE RD

W BROADWAY

ELL

K TER



Ohio River

CSO 104/105

Basin

Junction Chamber

CSO 189

Hornung Field

Not to Scale



CSO 189

ELLIOTT AVE

DEL PARK TER

RIVER PARK DR

ER PARK DR



CSO 104/105

Basin

Junction Chamber

CSO 189

Hornung Field

Not to Scale

CSO

104/105

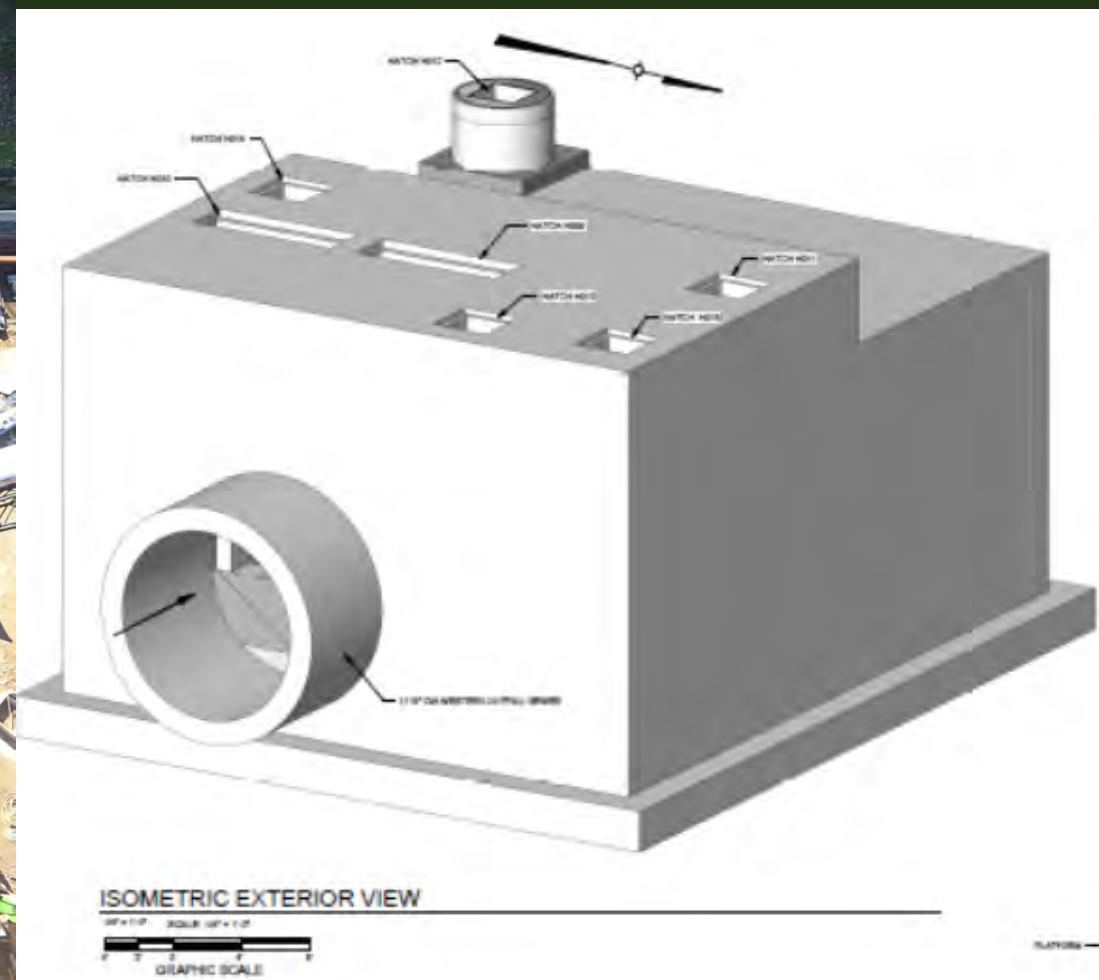
W BROADWAY

SHAWNEE PARK
ENTRANCE RD

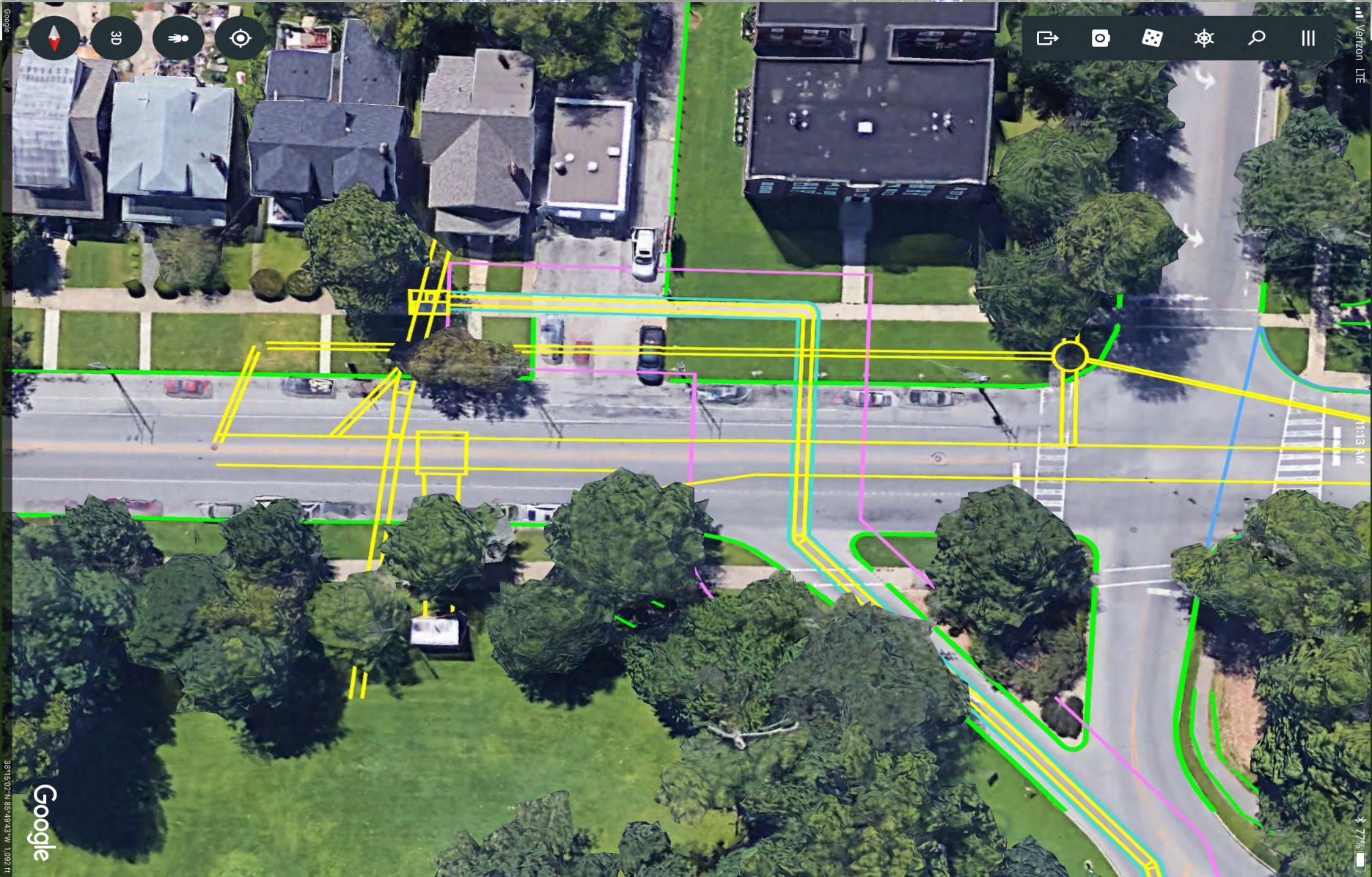
SOUTHWESTERN PKY



CSO 104/105



W. Broadway Work





CSO 104/105

Basin

Junction Chamber

CSO 189

Hornung Field

Not to Scale

An aerial photograph of a park area. A large yellow rectangle is in the top left corner. A road runs horizontally across the middle of the image. A building with a flat roof is in the center-right. A winding path is visible. A small yellow square is on the left side, and a larger yellow square is on the right side. The text 'Restroom & Pavilion' is overlaid in the upper left quadrant.

Restroom & Pavilion



Restroom & Pavilion



Restroom & Pavilion



Upcoming Activities

- Basin – Interior clean up and testing. Backfill will continue as weather permits
- Underground Operations Building - Interior painting, clean up, and testing
- Basin Courtyard – Brick work and concrete paving
- CSO 189 – Site Restoration
- CSO 104/105 – Continue concrete work
- Targeting to pave Loop Road in April



SUPPLIER DIVERSITY AND LOCAL LABOR

Minority Business Enterprise Firms

- 7NT
- Jacobi, Toombs & Lanz
- DLZ
- Browne Engineering
- American Ready Mix
- Geco Enterprises
- Metro Fence
- TEM Electric
- Pioneer Supply Group
- Joash Construction
- Cherokee Construction
- Hi-Mark Construction
- Springfield Plumbing
- Messier
- Seven Seas
- Multivista
- Harmon Steel
- HI-Mark Construction

Women Business Enterprise Firms

- Magna Engineers
- Leonard Engineering
- Third Rock Consultants
- ESI
- Lykins
- Terry Gollar Trucking
- Summers Grading
- Quantum Environmental
- S&M Precast
- McKinney Painting
- Jacobi Oil Services
- Geco Enterprises
- Advanced Ready Mix

MBE / WBE Update

- Purchasing Ongoing
- Project Commitment
 - MBE – 15%
 - WBE – 6%
- Current Projections
 - MBE – 17.25%
 - WBE – 7.75%



Local Labor

- Project Commitment – 76%
- Current Local Labor – 82%



225 Local Residents from Jefferson County have worked on the project.

The background of the slide is a faded photograph of a construction site. In the foreground, several large, light-colored concrete pipes are stacked. In the background, a yellow bulldozer is visible, partially obscured by the pipes. The top of the image shows the dark green foliage of trees against a blue sky. A dark green horizontal band is overlaid across the middle of the image, containing the text.

PUBLIC AND COMMUNITY OUTREACH

Website Updates

Oct 26 • Meeting No. 9 PowerPoint uploaded

Oct 16 • Meeting No. 9 Notes uploaded



The background of the slide is a faded, semi-transparent image of a construction site. In the foreground, there are several large, grey concrete pipes stacked together. In the background, a yellow bulldozer is visible, partially obscured by the pipes. The top of the image shows the dark green foliage of trees against a blue sky. A dark green horizontal band is positioned across the middle of the image, containing the text.

NEW BUSINESS



Tentative Next SAC Meeting

- Tuesday, April 9, 2019 at 6:00 pm

Guest Comments

- Raise your hand to be recognized
- Comments to be held to 3 minutes



END

