



Progressive Design Build Teams



ULLIMAN SCHUTTE

BURGESS & NIPLE

SHAWNEE PARK BASIN PROJECT

STAKEHOLDER ADVISORY COMMITTEE

MEETING NO. 9

October 16, 2018



Reminders

- Feel free to quote yourself, not others. However, if you want to be quoted, be sure to say so.
- Qualify your comments if further vetting is required
- *All concerns will be heard.* Some upon request, others at the end.
- *The Parking Lot – Distracting, but important non-agenda items*



METRO PARKS IMPROVEMENTS

Design and Construction

Metro Parks Improvements

	<i>Anticipated</i>	
	<u><i>Start</i></u>	<u><i>Finish</i></u>
• <i>Renovated Athletic Courts</i>		
• <i>Dirt Bowl</i>	<i>Apr 2017</i>	<i>Complete</i>
• <i>Basketball Courts</i>	<i>May 2017</i>	<i>Complete</i>
• <i>Harmony Field</i>	<i>Mid Oct 2017</i>	<i>Fall 2018</i>
• <i>Improved Hornung Field</i>	<i>Mid Sep 2017</i>	<i>Fall 2018</i>
• <i>Lily Pond</i>	<i>Mid Aug 2017</i>	<i>Fall 2018</i>
• <i>Ball House</i>	<i>Jun 2018</i>	<i>Fall 2018</i>

Metro Parks Improvements



Hornung Field

- *Planned seeding*
- *Improved subgrade*
- *Removed rocks and ruts*



The background image shows a construction site. In the foreground, there are several large, light-colored concrete pipes stacked horizontally. In the background, a yellow bulldozer is visible, partially obscured by the pipes. The top of the image features a dark, leafy tree canopy against a blue sky. A dark green horizontal band runs across the middle of the image, containing the word 'CONSTRUCTION' in white capital letters.

CONSTRUCTION



Shawnee Park

Shawnee Park Dr

Shawnee Park Dr

W Broadway

S 45th St



CSO 104/105

Basin

Junction
Chamber

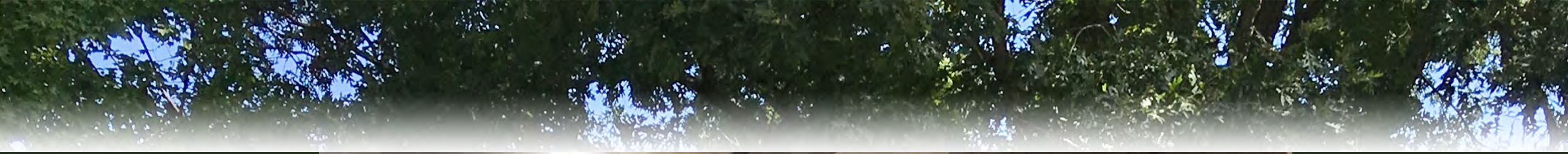
CSO 189

Hornung Field

An aerial photograph of a landscape featuring a road, trees, and a building. A large yellow rectangle with a black border is superimposed on the image, containing the word "Basin". Below the rectangle, a small yellow icon of a house with a black roof is visible. The background shows a road with several cars, a line of trees, and a large building in the lower right corner.

Basin











CSO 104/105

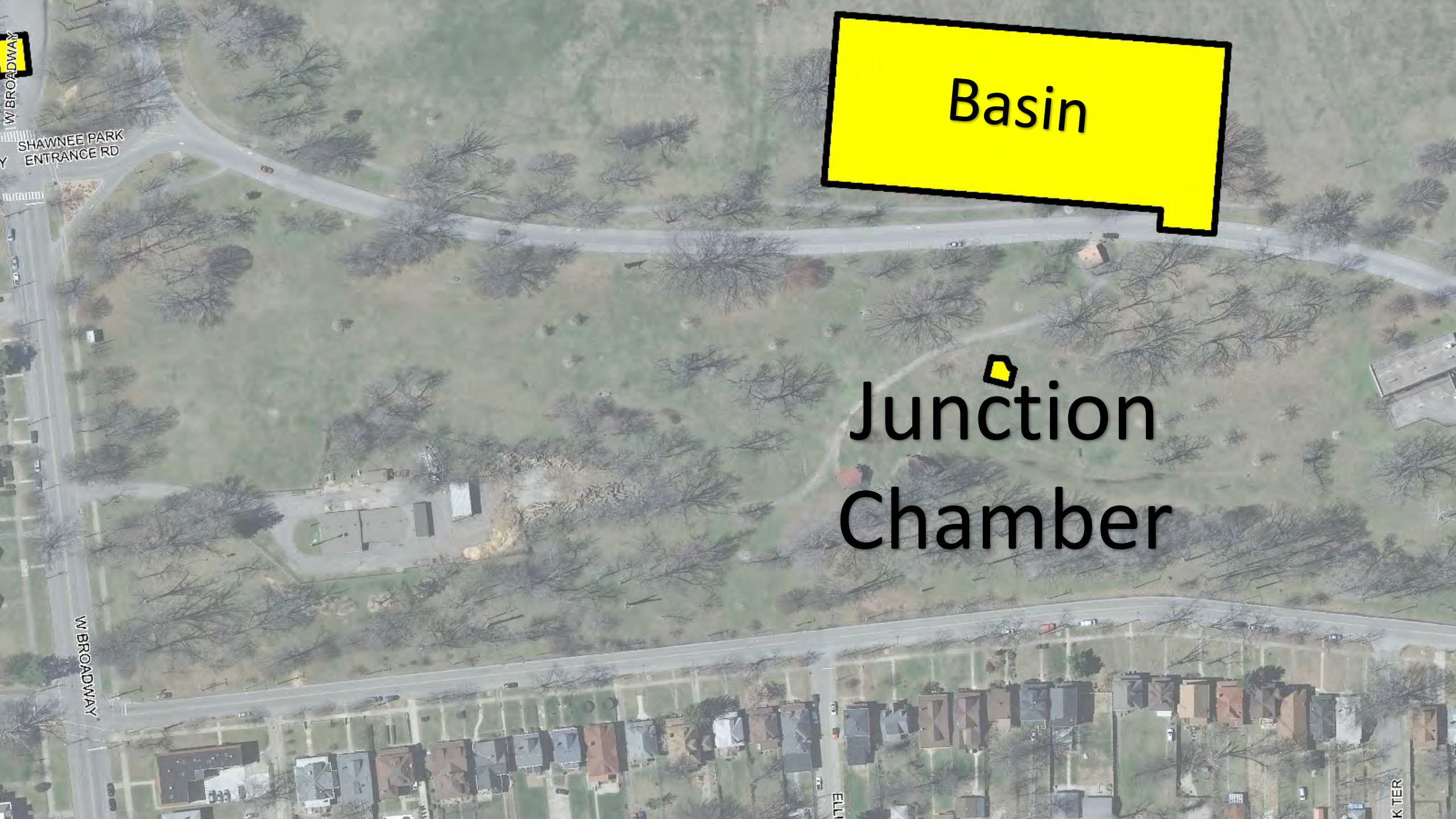
Basin

Junction Chamber

CSO 189

Hornung Field

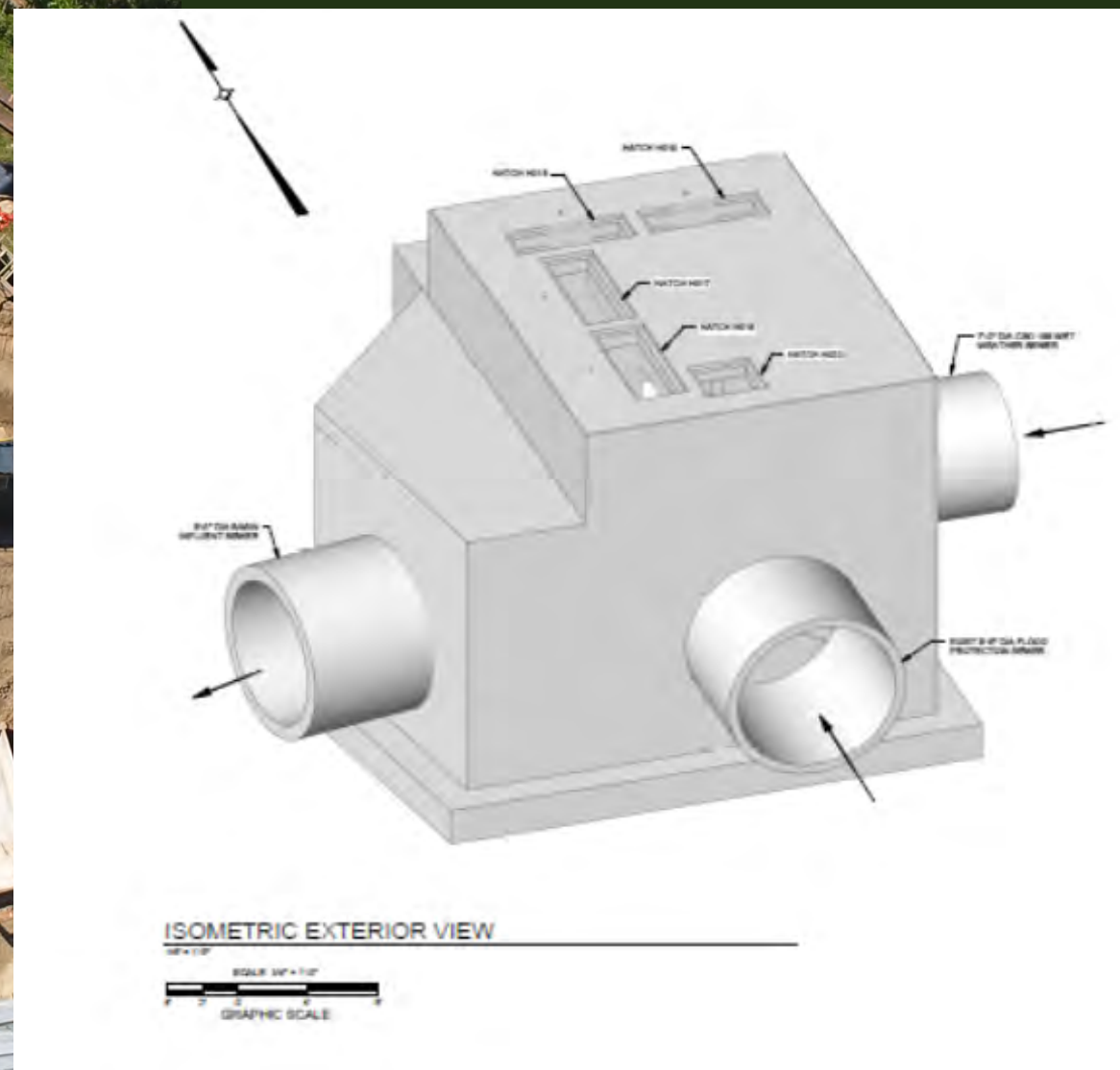
Not to Scale



Basin

Junction
Chamber

Junction Chamber





CSO 104/105

Basin

Junction Chamber

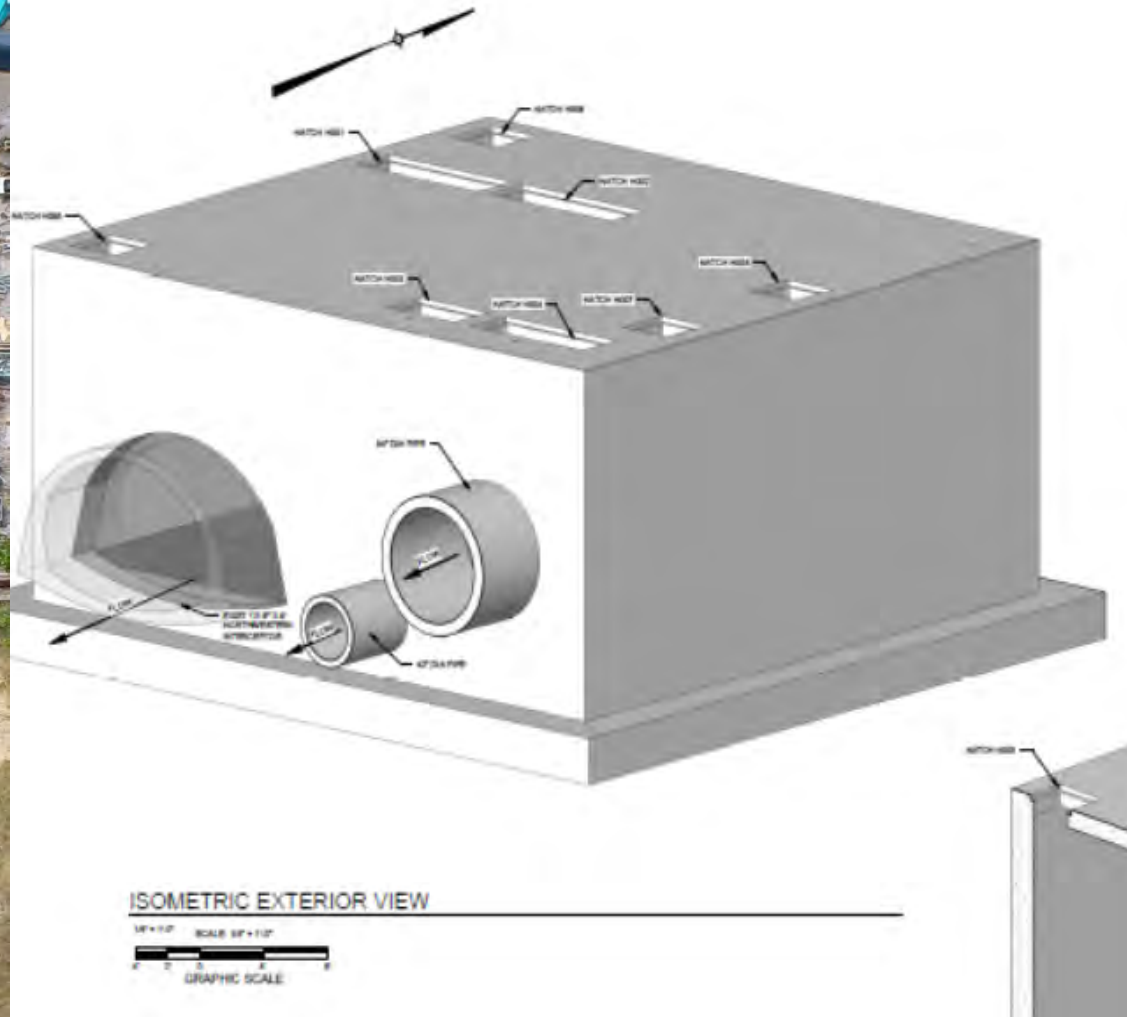
CSO 189

Hornung Field

Not to Scale



CSO 189





Not to Scale

CSO

104/105

W BROADWAY

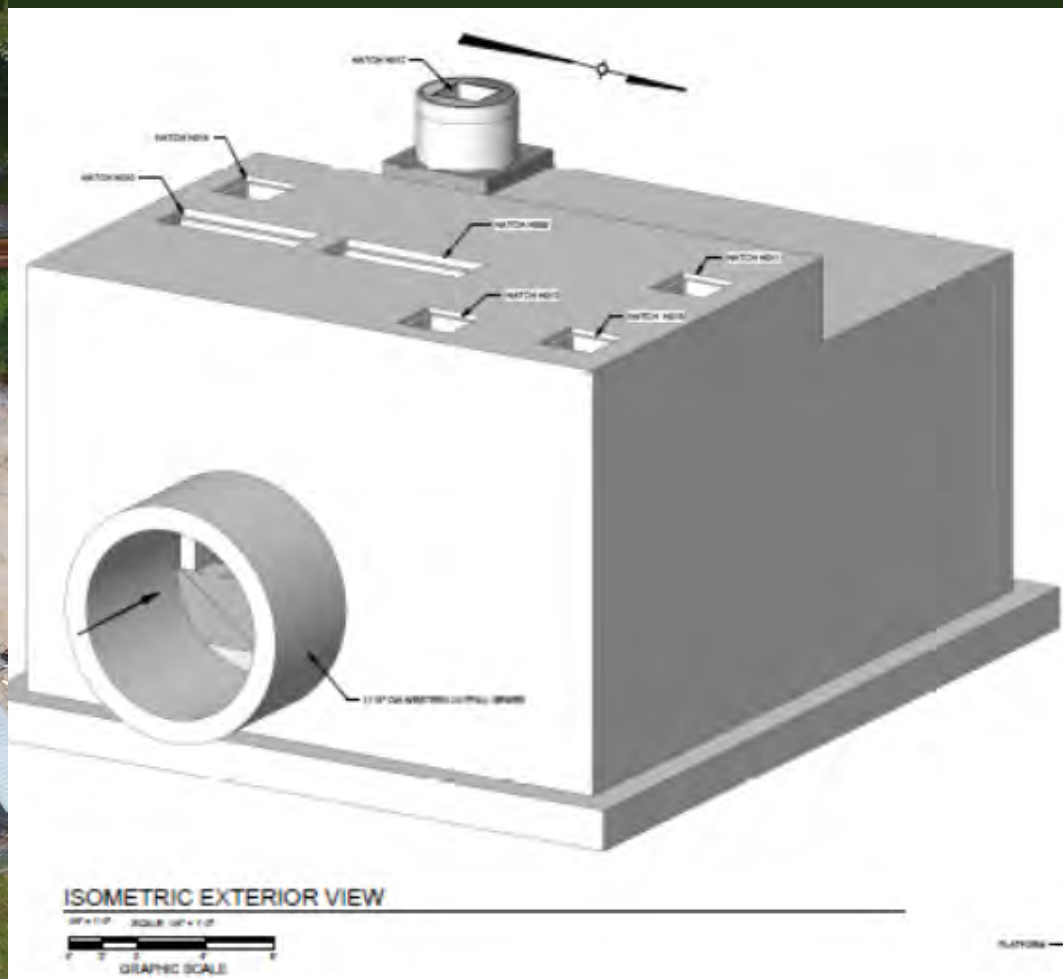
SHAWNEE PARK
ENTRANCE RD

SOUTHWESTERN PKY



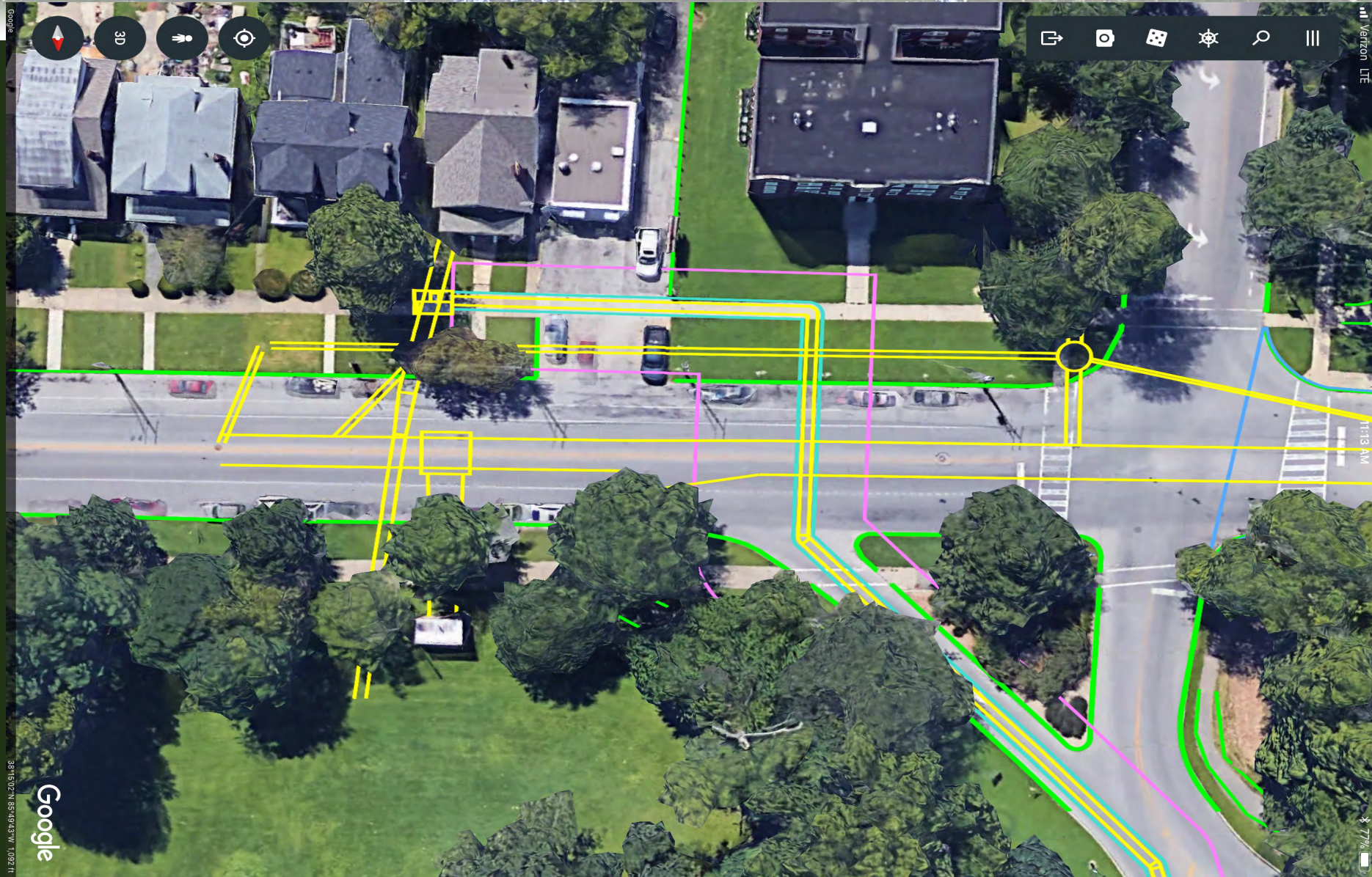


CSO 104/105





Force Main Broadway



[illegible]

- *Underground conduit to Flow measuring device*
- *Work should be complete early next week*



Not to Scale

An aerial photograph of a park area. A road runs horizontally across the top. A large yellow rectangle with a black border is in the top left corner. The text "Restroom & Pavilion" is centered in the upper half. A small yellow rectangle with a black border is on the left side. A larger yellow rectangle with a black border is on the right side. A building is visible in the center-right. A road runs horizontally across the bottom. A residential area with houses is at the very bottom.

Restroom &
Pavilion

Restroom & Pavilion



Restroom & Pavilion



Activities to Date

- Construction Update
 - Basin Concrete
 - Concrete at the Basin Substantially Complete
 - Basin Junction Chamber – Concrete Complete
- CSO 189
 - Base Slab (100%)
 - Walls (50%)



Upcoming Activities

- Basin – Metals, interior piping and electrical. Basin backfill ongoing.
- Underground Control Building - Interior piping and electrical
- Basin Courtyard – Equipment Pads and concrete paving
- CSO 189 – Concrete work ongoing
- CSO 104/105 – Continue excavation work followed by Concrete



SUPPLIER DIVERSITY AND LOCAL LABOR

Minority Business Enterprise Firms

- 7NT
- Jacobi, Toombs & Lanz
- DLZ
- Browne Engineering
- American Ready Mix
- Geco Enterprises
- Metro Fence
- TEM Electric
- Pioneer Supply Group
- Joash Construction
- Cherokee Construction
- Hi-Mark Construction
- Springfield Plumbing
- Messier
- Seven Seas
- Multivista
- Harmon Steel
- HI-Mark Construction

Women Business Enterprise Firms

- Magna Engineers
- Leonard Engineering
- Third Rock Consultants
- ESI
- Lykins
- Terry Gollar Trucking
- Summers Grading
- Quantum Environmental
- S&M Precast
- McKinney Painting
- Jacobi Oil Services
- Geco Enterprises
- Advanced Ready Mix

MBE / WBE Update

- Purchasing Ongoing
- Project Commitment
 - MBE – 15%
 - WBE – 6%
- Current Projections
 - MBE – 17.25%
 - WBE – 7.75%



Local Labor

- Project Commitment – 76%
- Current Local Labor – 82%



*225 Local Residents from Jefferson County
have worked on the project.*



PUBLIC AND COMMUNITY OUTREACH

Work in Broadway Update



Website Updates

Sept 21 • Hornung Field Update

August 15 • Basin Update

July 11 • PowerPoint upload





NEW BUSINESS



Next SAC Meeting

- SAC Meetings
 - January 15, 2019 at 6:00 pm



Guest Comments

- Raise your hand to be recognized
- Comments to be held to 3 minutes



END

