



Progressive Design Build Teams



BURGESS & NIPLE

SHAWNEE PARK BASIN PROJECT

STAKEHOLDER ADVISORY COMMITTEE

MEETING NO. 8

July 10, 2018



Reminders

- Feel free to quote yourself, not others. However, if you want to be quoted, be sure to say so.
- Qualify your comments if further vetting is required
- *All concerns will be heard.* Some upon request, others at the end.
- *The Parking Lot – Distracting, but important non-agenda items*



METRO PARKS IMPROVEMENTS

Design and Construction

Metro Parks Improvements

	<i>Anticipated</i>	
	<u><i>Start</i></u>	<u><i>Finish</i></u>
• <i>Renovated Athletic Courts</i>		
• <i>Dirt Bowl</i>	<i>Apr 2017</i>	<i>Complete</i>
• <i>Basketball Courts</i>	<i>May 2017</i>	<i>Complete</i>
• <i>Harmony Field</i>	<i>Mid Oct 2017</i>	<i>Fall 2018</i>
• <i>Improved Hornung Field</i>	<i>Mid Sep 2017</i>	<i>Fall 2018</i>
• <i>Lily Pond</i>	<i>Mid Aug 2017</i>	<i>Summer 2018</i>
• <i>Ball House</i>	<i>Jun 2018</i>	<i>Fall 2018</i>

Metro Parks Improvements



The background image is a construction site. In the foreground, there are several large, light-colored concrete pipes stacked horizontally. In the background, a yellow bulldozer is visible, partially obscured by the pipes. The top of the image shows a dense canopy of green trees against a blue sky. A dark green horizontal band runs across the middle of the image, containing the word 'CONSTRUCTION' in white capital letters.

CONSTRUCTION



Shawnee Park

Shawnee Park Dr

Shawnee Park Dr

W Broadway

S 45th St



CSO 104/105

Basin

Junction Chamber

CSO 189

Hornung Field

Not to Scale

An aerial photograph of a landscape featuring a road, trees, and a building. A large yellow rectangular label with a black border is positioned in the upper-middle section, containing the word "Basin". Below this label, on the left side of the road, is a small yellow icon with a black outline, resembling a map of a state or region. The landscape includes a road with several vehicles, a line of trees, and a building in the lower right corner.

Basin






Basin

CSO 189

Hornung Field

Not to Scale

An aerial photograph of a large, open grassy field with scattered trees. The field is surrounded by residential areas with houses and streets. The text 'Hornung Field' is overlaid in the center-right. Street names 'DIRTBOWL DR', 'RIVER PARK DR', 'SOUTHWESTERN PKY', and 'SHAWNEE DR' are visible along the edges of the field.

Hornung Field

DIRTBOWL DR

RIVER PARK DR

SOUTHWESTERN PKY

SHAWNEE DR

Hornung Field





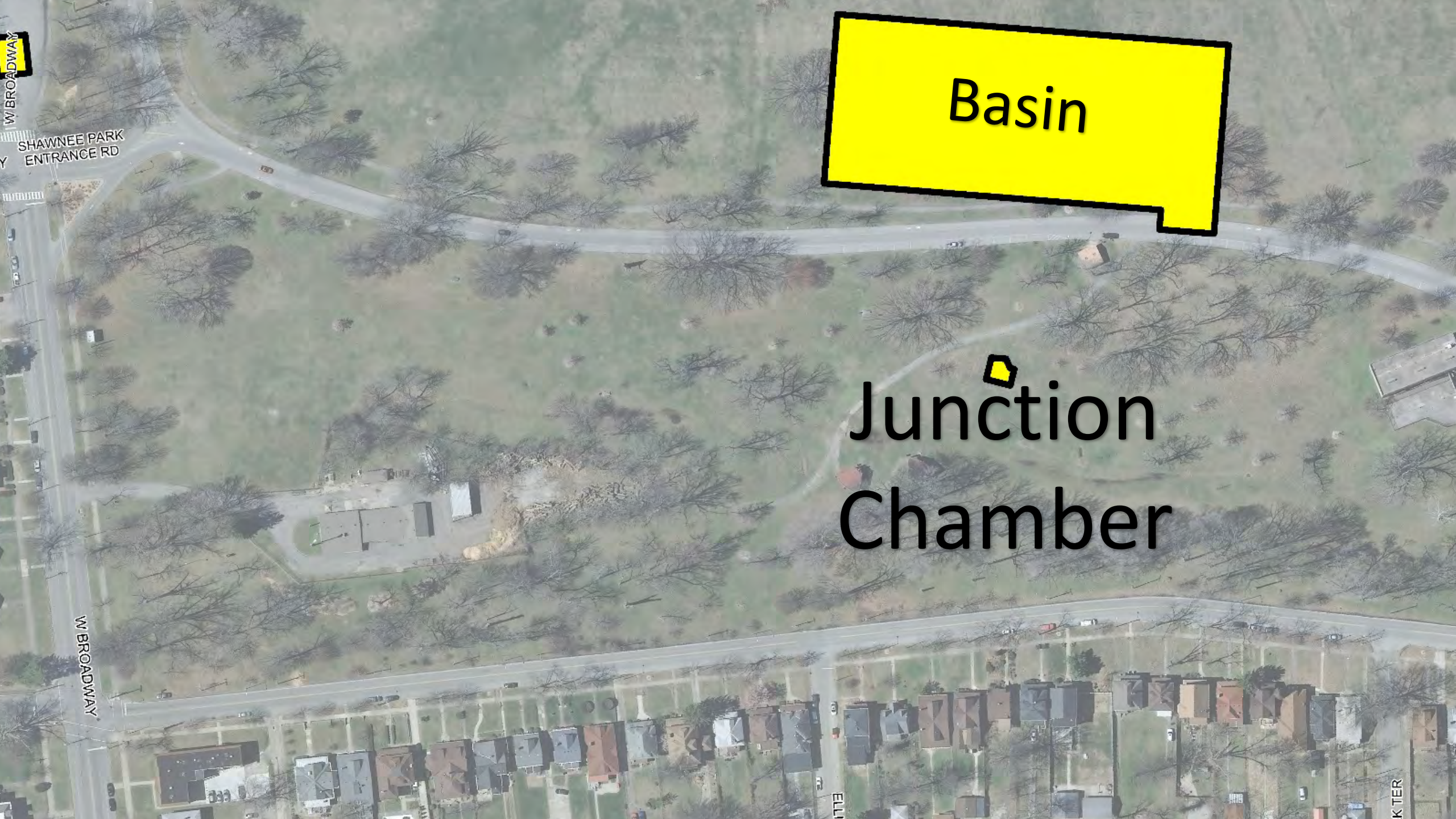
Basin

Junction Chamber

CSO 189

Hornung Field

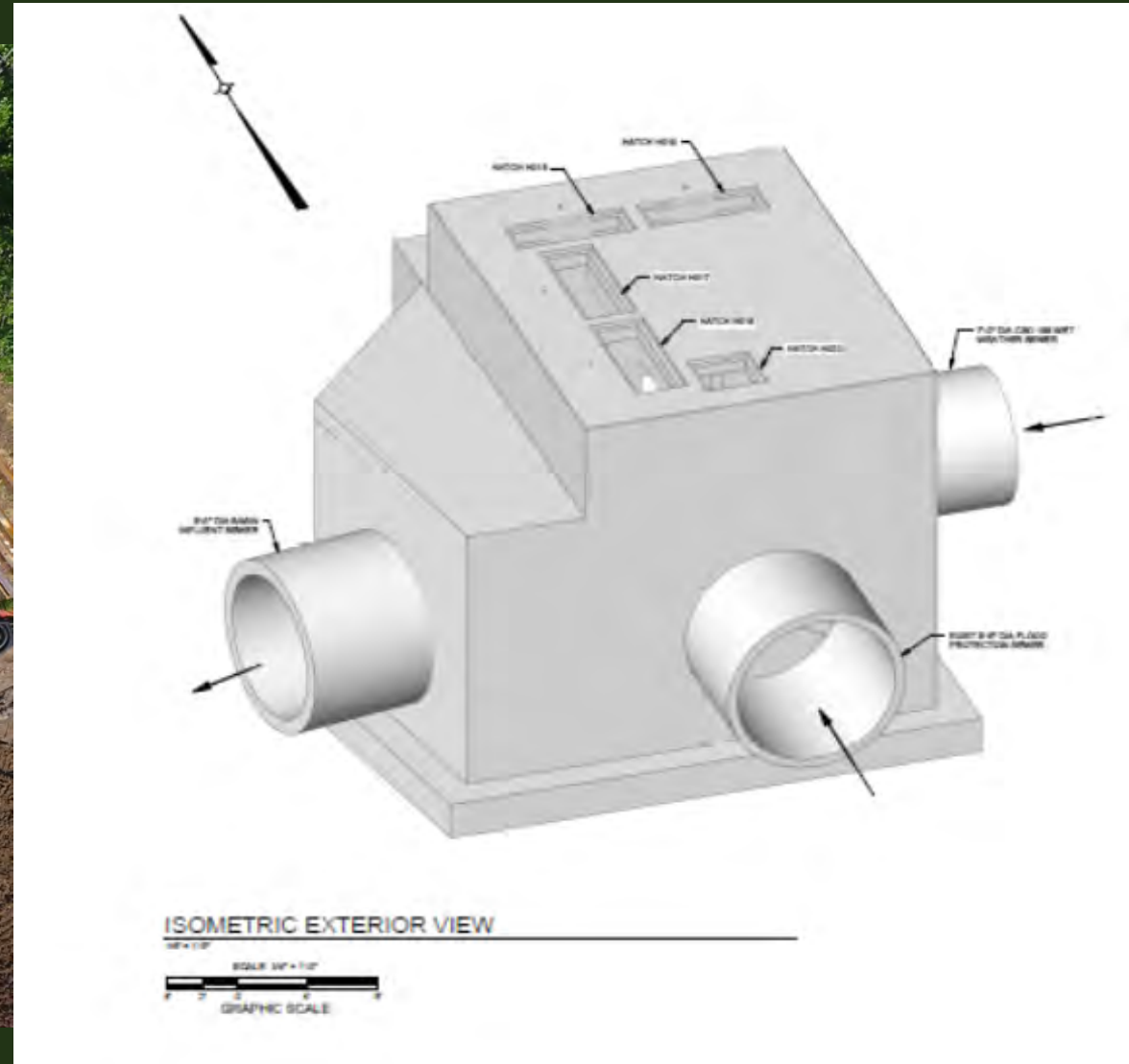
Not to Scale



Basin

Junction
Chamber

Junction Chamber





CSO 104/105

Basin

Junction Chamber

CSO 189

Hornung Field

Not to Scale



This is an aerial photograph of a suburban neighborhood. A large yellow rectangle is located at the top of the image. Three smaller yellow markers are placed on the map: a pentagon in the upper left, a square in the center right, and a small square near the top center. The text 'CSO 189' is written in large black font next to the central square marker. Several streets are labeled: 'ELLIOTT AVE' on the left, 'DEL PARK TER' in the center, and 'RIVER PARK DR' on the right. The area is filled with houses, trees, and a road network.

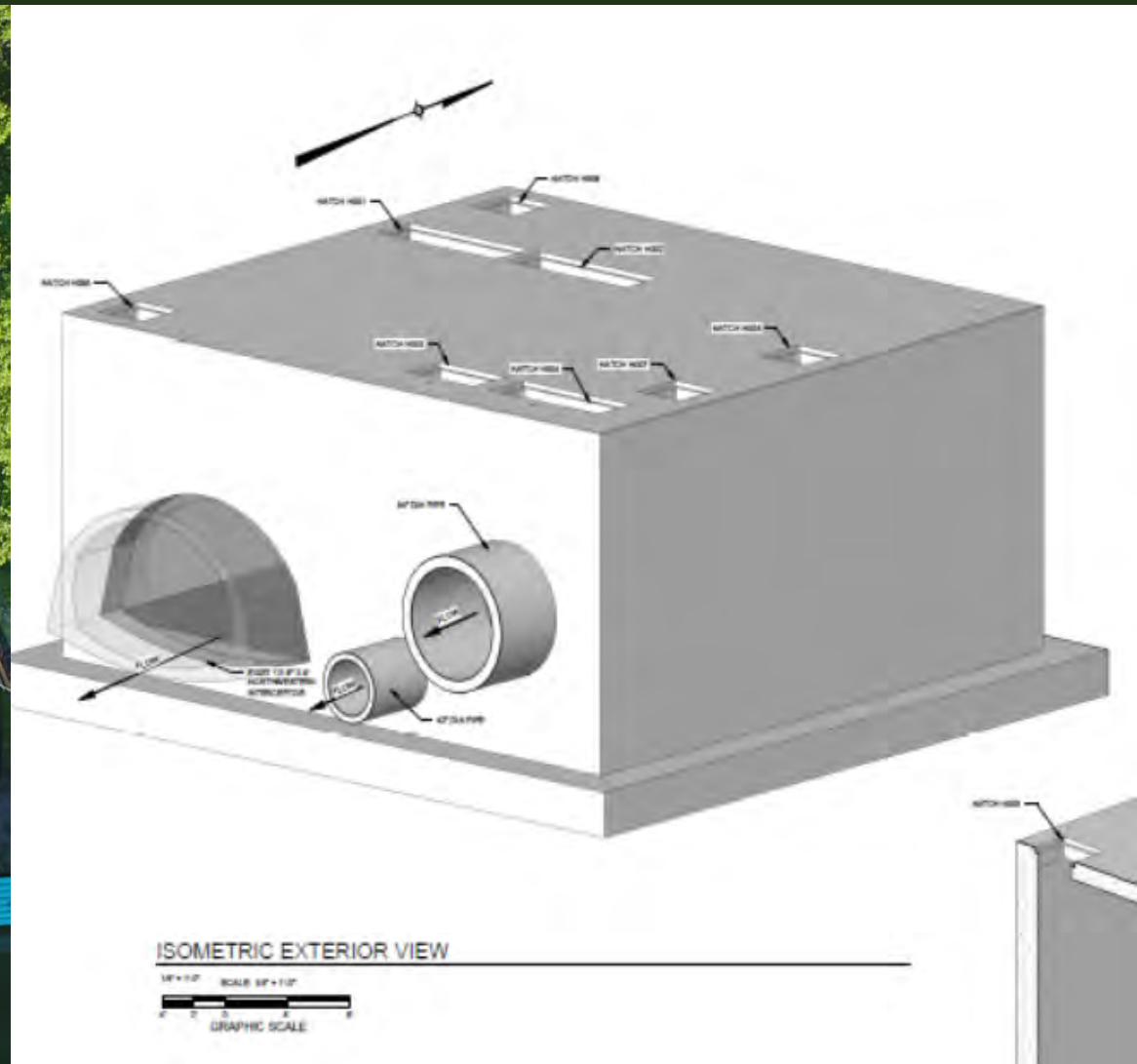
CSO 189

ELLIOTT AVE

DEL PARK TER

RIVER PARK DR

ER PARK DR





CSO 104/105

Basin

Junction Chamber

CSO 189

Hornung Field

Not to Scale

CSO

104/105

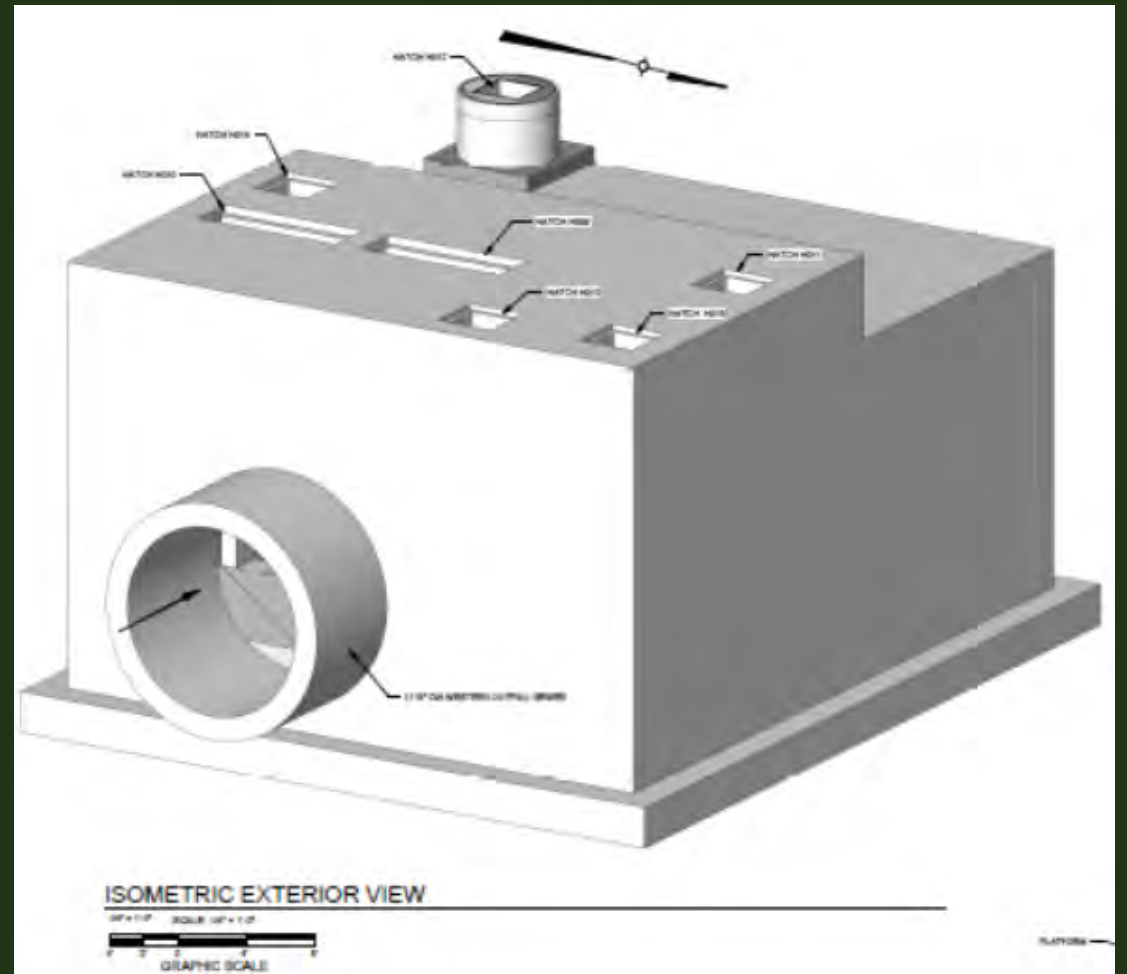
W BROADWAY

SHAWNEE PARK
ENTRANCE RD

SOUTHWESTERN PKY

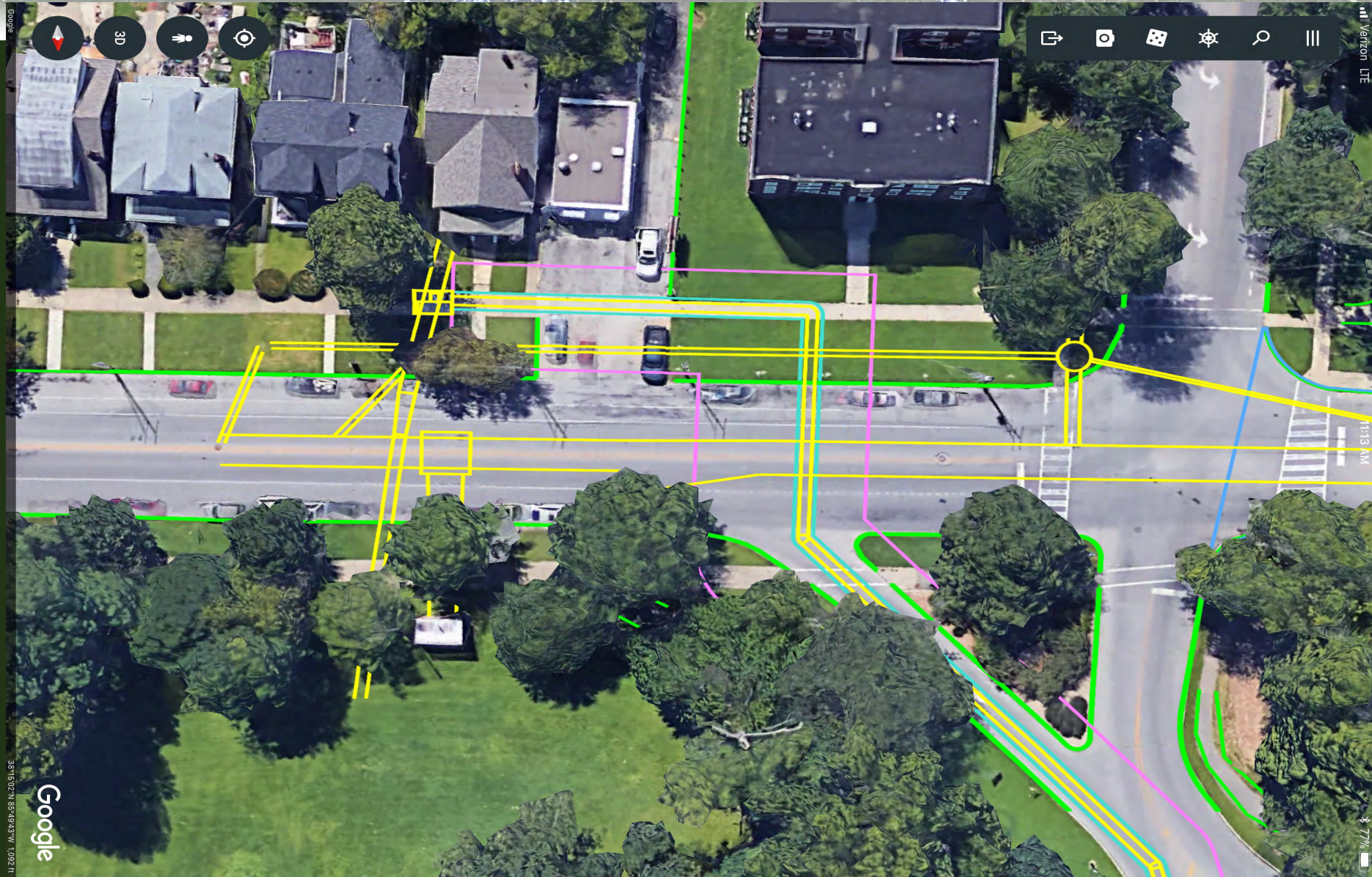


An aerial photograph of a road intersection. Three large white trucks are parked in a row on the right side of the road, facing away from the camera. The truck on the left has the number '1620' on its side, and the truck on the right has the number '1301'. Several smaller cars are parked on the left side of the road. The surrounding area includes green grass, trees, and some buildings in the background.





Force Main Broadway





CSO 104/105

Basin

Junction Chamber

CSO 189

Hornung Field

Not to Scale

An aerial photograph of a park area. A road runs horizontally across the top. A large yellow rectangle with a black border is in the top left corner. The text "Restroom & Pavilion" is centered in the upper half. A small yellow rectangle with a black border is on the left side. A larger yellow rectangle with a black border is on the right side. A building is visible in the center-right. A road runs horizontally across the bottom, with a residential area below it.

Restroom &
Pavilion

Restroom & Pavilion



Activities to Date

- Construction Update
 - Basin Concrete (28,530 cy to date)
 - Walls (100%)
 - Base Slabs (100%)
 - Columns (90%)
 - Divider Walls (70%)
 - Basin Junction Chamber – Concrete Complete
 - CSO 189
 - Base Slab (100%)
 - Walls (30%)



Upcoming Activities

- Basin - Concrete roof and tunnel ongoing. Metals and pipe work to follow
- Underground Control Building - concrete work and pipe installation ongoing
- Basin Junction Chamber – interconnecting pipe, metals, and gates
- CSO 189 – Concrete work ongoing
- CSO 104/105 – Utility relocates ongoing; excavation to begin following relocates

The background of the slide is a photograph of a construction site. In the foreground, several large, light-colored concrete pipes are stacked horizontally. In the background, a yellow bulldozer is visible, partially obscured by the pipes. The top of the image shows the dark green foliage of trees against a blue sky. A dark green horizontal band with white text is superimposed over the middle of the image.

SUPPLIER DIVERSITY AND LOCAL LABOR

Minority Business Enterprise Firms

- 7NT
- Jacobi, Toombs & Lanz
- DLZ
- Browne Engineering
- American Ready Mix
- Geco Enterprises
- Metro Fence
- TEM Electric
- Pioneer Supply Group
- Joash Construction
- Cherokee Construction
- Hi-Mark Construction
- Springfield Plumbing
- Messier
- Seven Seas
- Multivista
- Harmon Steel
- HI-Mark Construction

Women Business Enterprise Firms

- Magna Engineers
- Leonard Engineering
- Third Rock Consultants
- ESI
- Lykins
- Terry Gollar Trucking
- Summers Grading
- Quantum Environmental
- S&M Precast
- McKinney Painting
- Jacobi Oil Services
- Geco Enterprises
- Advanced Ready Mix

MBE / WBE Update

- Purchasing Ongoing
- Project Commitment
 - MBE – 15%
 - WBE – 6%
- Current Projections
 - MBE – 17.25%
 - WBE – 7.75%



Local Labor

- Project Commitment – 76%
- Current Local Labor – 81%



*186 Local Residents from Jefferson County
have worked on the project.*



PUBLIC AND COMMUNITY OUTREACH




Past Outreach Activities

- May 8** • Resident outreach at Yearlings Club
- June 22** • One on one meetings with residents about Broadway construction
- June 22** • Meetings with Big Mommas and resident at 4530 W Broadway



W. Broadway Residents Notification


- May 1** - Door to door meeting notification
- May 8** - Community Outreach Meeting
- June 16** - Door to door meeting schedule
- June 20** - One on one meetings
- June 22** - Door to Door notification 1
- July 2** - Door to Door notification 2



Work on Broadway will begin July 9th. Access will be closed from Broadway and Southwestern Parkway through late December 2018. Access to the common parking lot area near your property will be rerouted as shown below. Residents will access the parking lot using a temporary paved road accessible through the park. Just enter the park from Broadway as usual and follow the signs.

Construction activities in this area are in support of MSD's Shawnee Park Basin Project and this work is required to redirect combined sewer overflows from the river to the new basin currently under construction in Shawnee Park.

If you have any questions or concerns call (844) 429-5817 or email shawneeparkbasinproject@gmail.com.



Browne
ENGINEERING & CONSTRUCTION
www.brownee.com
(513) 931-0900

Past Activities & Website Updates

May 15

- Newsletter Subscription

May 25

- West Louisville Appreciation Day Post

June 22

- W Broadway parking lot reroute Post

June 25

- Dirt Bowl 2018 Post

Upcoming

- Shawnee Park Newsletter





OLD BUSINESS



April 10, 2018 SAC Follow-up

- ✓ Shawnee Neighborhood Workforce



NEW BUSINESS



Next SAC Meeting

- SAC Meetings
 - October 9, 2018 at 6:00 pm
 - January 15, 2019 at 6:00 pm



Guest Comments

- Raise your hand to be recognized
- Comments to be held to 3 minutes



END

