



Progressive Design Build Team



ULLIMAN SCHUTTE

BURGESS & NIPLE

SHAWNEE PARK BASIN PROJECT

STAKEHOLDER ADVISORY COMMITTEE MEETING NO. 7

April 10, 2018



Reminders

- Feel free to quote yourself, not others. However, if you want to be quoted, be sure to say so.
- Qualify your comments if further vetting is required
- *All concerns will be heard.* Some upon request, others at the end.
- *The Parking Lot – Distracting, but important non-agenda items*

The background of the slide is a faded photograph of a construction site. In the foreground, several large, light-colored concrete pipes are stacked. In the background, a yellow bulldozer is visible, and there are some trees and a clear sky. The overall scene is bright and somewhat hazy.

METRO PARKS IMPROVEMENTS

Design and Construction

Metro Parks Improvements

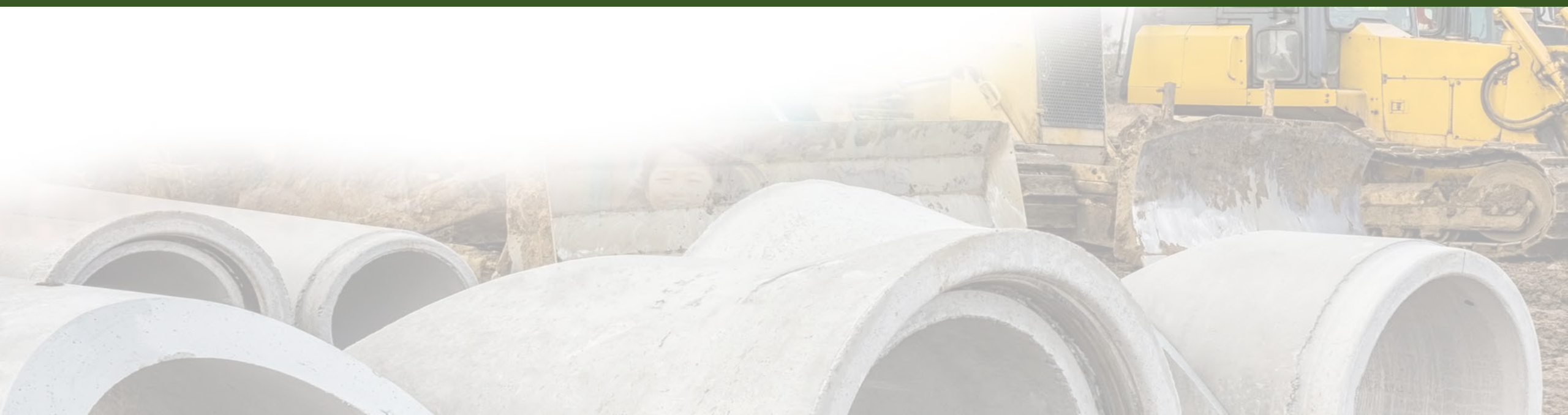
	<i>Anticipated</i>	
	<u><i>Start</i></u>	<u><i>Finish</i></u>
• <i>Renovated Athletic Courts</i>		
• <i>Dirt Bowl</i>	<i>Apr 2017</i>	<i>Complete</i>
• <i>Basketball Courts</i>	<i>May 2017</i>	<i>Complete</i>
• <i>Harmony Field</i>	<i>Mid Oct 2017</i>	<i>Spring 2018</i>
• <i>Improved Hornung Field</i>	<i>Mid Sep 2017</i>	<i>Spring 2018</i>
• <i>Lily Pond</i>	<i>Mid Aug 2017</i>	<i>Summer 2018</i>
• <i>Ball House</i>	<i>Jun 2018</i>	<i>Fall 2018</i>

Metro Parks Improvements





CONSTRUCTION





Shawnee Park

Shawnee Park Cir

Shawnee Park Rd

S 45th St

W Broadway

S 45th St



Ohio River

CSO 104/105

Basin

Junction Chamber

CSO 189

Hornung Field

Not to Scale



Basin





CSO 104/105

Basin

Junction Chamber

CSO 189

Hornung Field

Not to Scale

Hornung Field

DIRTBOWL DR

RIVER PARK DR

SOUTHWESTERN PKY

SHAWNEE DR



Hornung Field





Ohio River

CSO 104/105

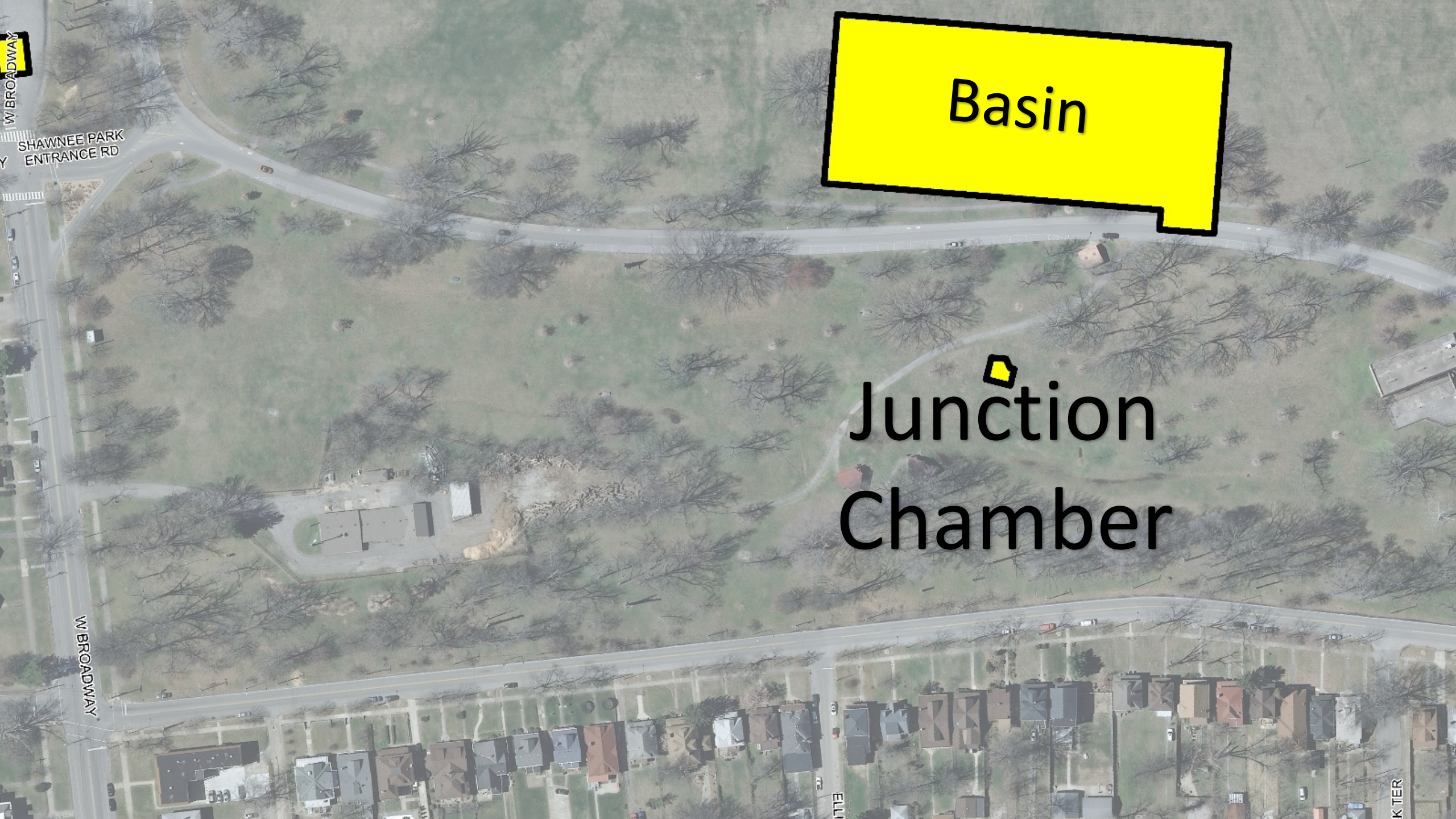
Basin

Junction Chamber

CSO 189

Hornung Field

Not to Scale



Basin

Junction Chamber

W BROADWAY

SHAWNEE PARK
ENTRANCE RD

W BROADWAY

ELL

K TER



Ohio River

SHAWNEE CROSSING

SHAWNEE CROSSING

SHAWNEE LOOK ALI

SHAWNEE CROSSING

SHAWNEE CROSSING

SHAWNEE PARK

CSO 104/105

Basin

Junction Chamber

CSO 189

Hornung Field

Not to Scale



CSO 189

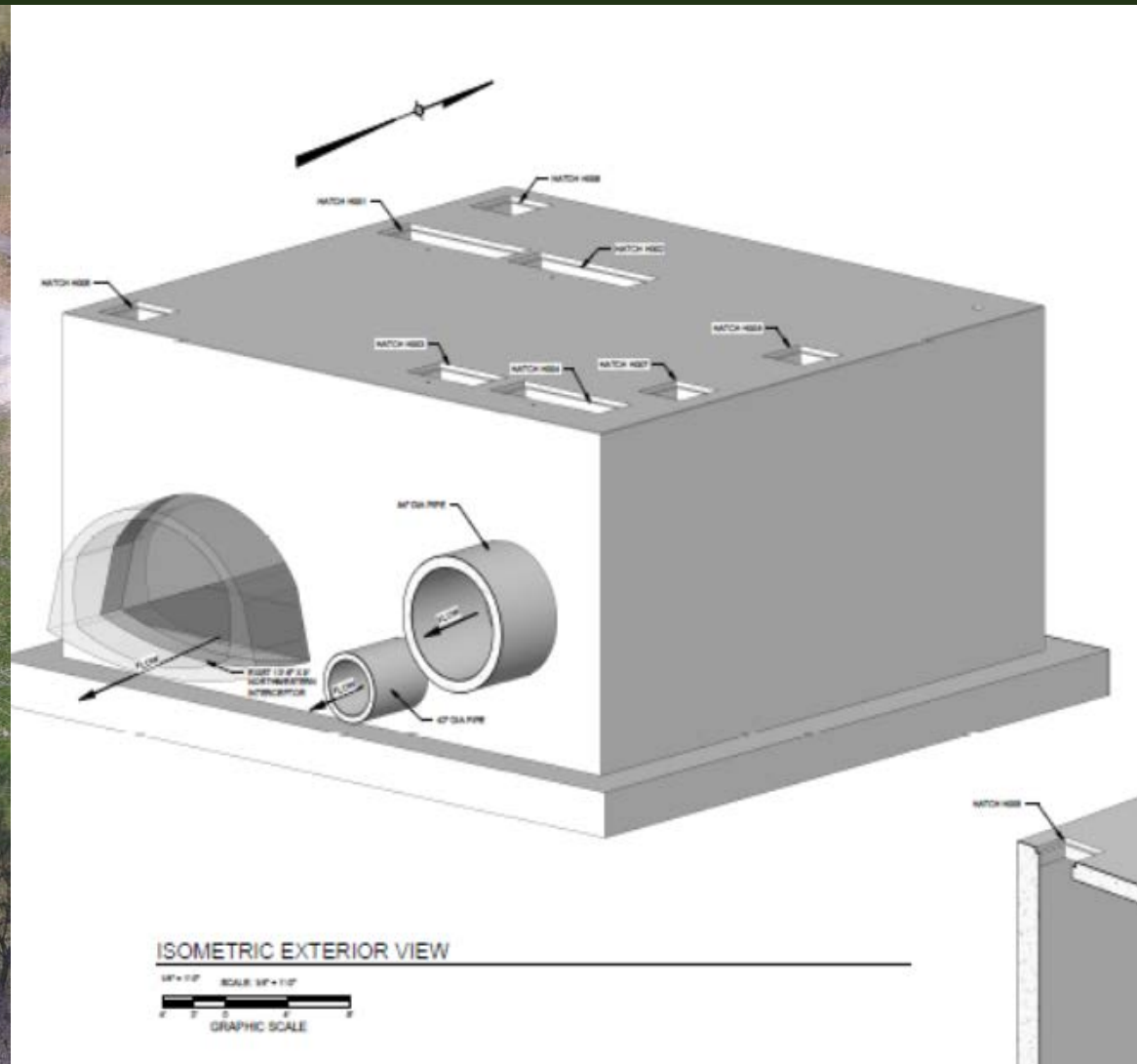
ELLIOTT AVE

DEL PARK TER

RIVER PARK DR

ER PARK DR

CSO 189





Ohio River

SHAWNEE CROSSING

SHAWNEE CROSSING

SHAWNEE LOOK ALI

SHAWNEE CROSSING

SHAWNEE CROSSING

SHAWNEE PARK

CSO 104/105

Basin

Junction Chamber

CSO 189

Hornung Field

Not to Scale

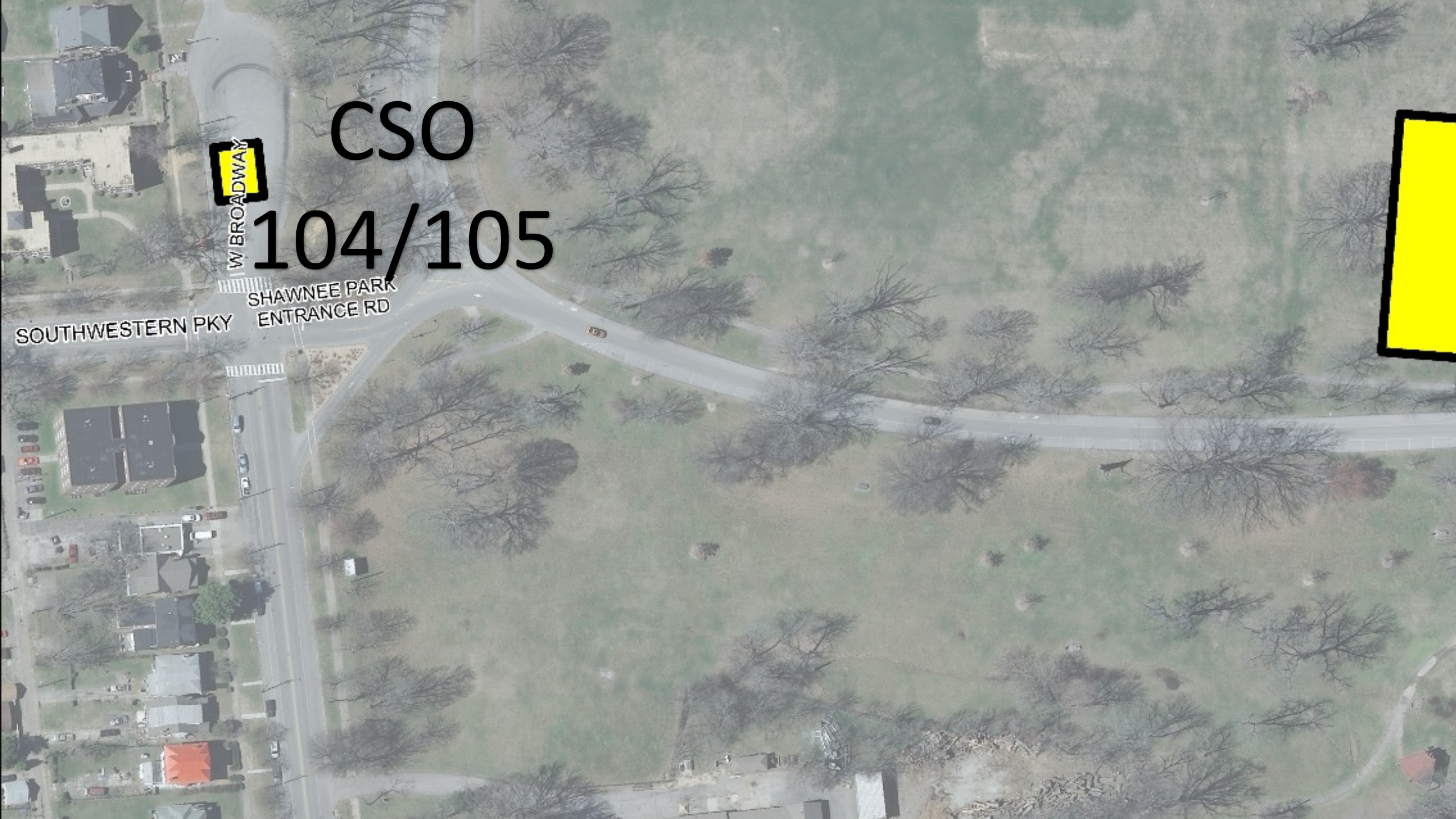
CSO

104/105

W BROADWAY

SHAWNEE PARK
ENTRANCE RD

SOUTHWESTERN PKY





Ohio River

CSO 104/105

Basin

Junction Chamber

CSO 189

Hornung Field

Not to Scale



Restroom & Pavilion



Restroom & Pavilion





Activities to Date

- One year into construction (April 3)
- Fast Facts
 - Excavation (300,000 cy)
 - Support of Excavation (26,800 VLF Piles; 642 Tiebacks)
 - Deep foundation piles (374 Piles)
 - Basin Concrete (21,000 cy to date)
 - Walls (50%)
 - Mat Slabs (100%)
 - Columns (45%)
 - Divider Walls (40%)
 - ZERO Lost time or Recordable Accidents



Upcoming Activities

- Basin - construction (concrete walls and decks) ongoing
- Junction Chamber - construction ongoing
- CSO 189 - construction ongoing
- Underground Control Building - construction excavation and concrete work beginning this month
- CSO 104/105 - construction commencing summer

A construction site featuring large concrete pipes in the foreground and a yellow bulldozer in the background. The scene is partially obscured by a dark green banner with white text.

SUPPLIER DIVERSITY AND LOCAL LABOR

Minority Business Enterprise Firms

- 7NT
- Jacobi, Toombs & Lanz
- DLZ
- Browne Engineering
- American Ready Mix
- Geco Enterprises
- Metro Fence
- TEM Electric
- Pioneer Group
- Joash Construction
- Cherokee Construction
- Hi-Mark Construction
- Springfield Plumbing
- Messier
- Seven Seas
- Multivista
- Harmon Steel



Women Business Enterprise Firms

- Magna Engineers
- Leonard Engineering
- Third Rock Consultants
- **ESI**
- Lykins
- Terry Gollar Trucking
- Summers Grading
- Quantum Environmental
- S&M Precast
- McKinney Painting
- Jacobi Oil Services
- Geco
- Advanced Ready Mix

MBE / WBE Update

- Purchasing Ongoing
- Project Commitment
 - MBE – 15%
 - WBE – 6%
- Current Projections
 - MBE – 17.25%
 - WBE – 7.75%



Local Labor

- Project Commitment – 76%
- Current Local Labor – 80%



153 Local Residents from Jefferson County have worked on the project.

A background image of a construction site. In the foreground, several large, grey concrete pipes are stacked. In the background, a yellow bulldozer is visible, partially obscured by a bright light flare. The top of the image shows green trees against a blue sky.

PUBLIC AND COMMUNITY OUTREACH

W. Broadway Residents Notification

30 Days Out - 1 on 1 visits with leave behind

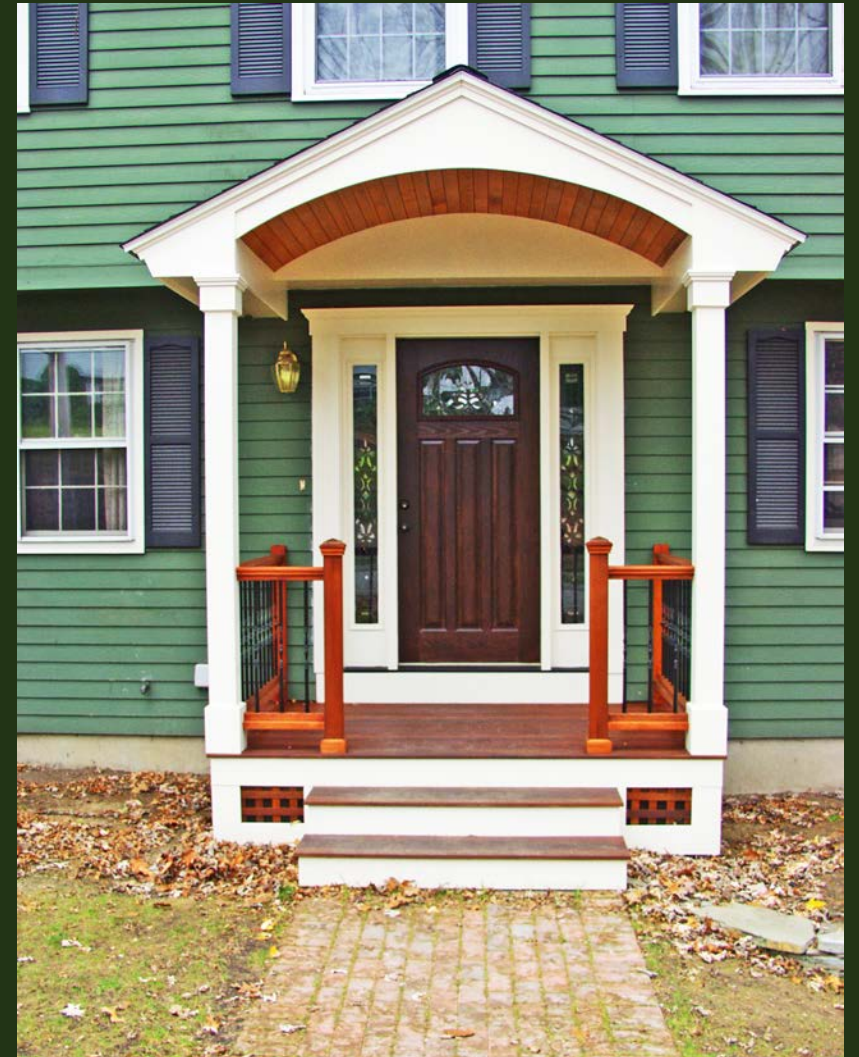
- Post on the website

- Post in the newsletter

2 Weeks Out - Post in the newsletter

- Post at apartment building

1 Week Out - Door to Door flyer campaign



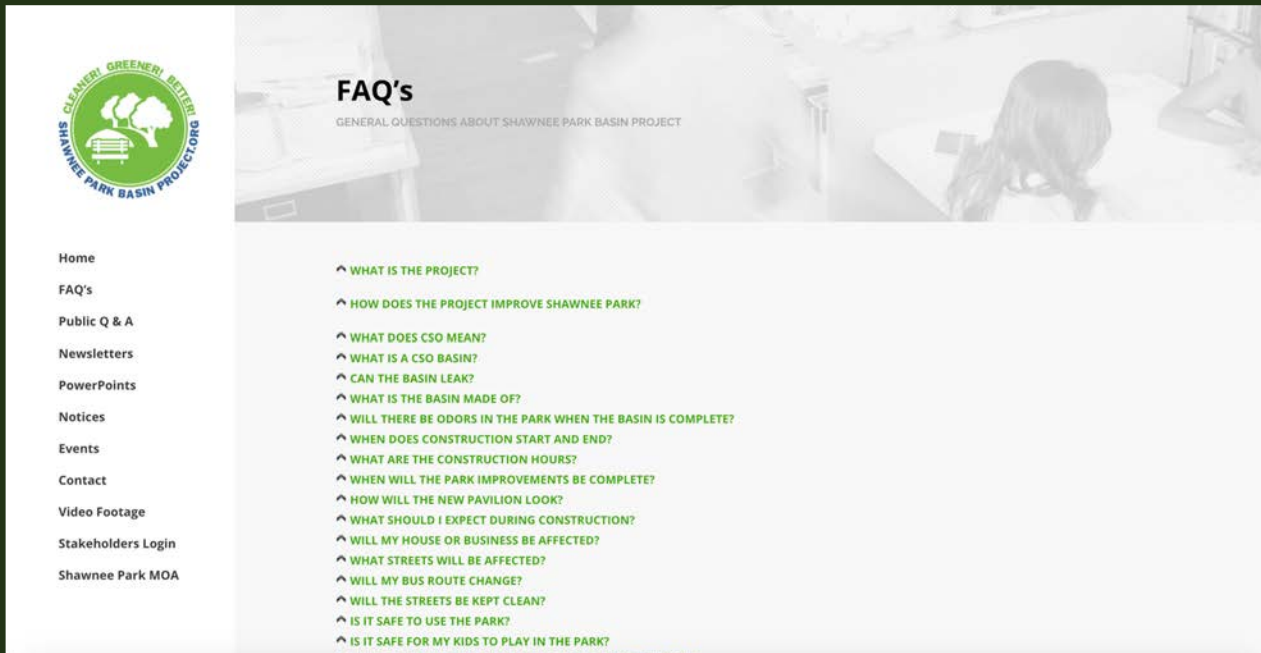
Upcoming Outreach Activities

- One on one meetings with W Broadway residents about CSO 104/105
- Meet with Big Mommas and resident at 4530 W Broadway St.



Website Updates

- FAQ section updated



The screenshot shows the website for the Shawnee Park Basin Project. On the left is a navigation menu with links: Home, FAQ's, Public Q & A, Newsletters, PowerPoints, Notices, Events, Contact, Video Footage, Stakeholders Login, and Shawnee Park MOA. The main content area is titled 'FAQ's' with the subtitle 'GENERAL QUESTIONS ABOUT SHAWNEE PARK BASIN PROJECT'. Below this is a list of 18 questions, each preceded by a green upward-pointing arrow icon. The questions cover topics such as project goals, construction schedule, and safety.

FAQ's
GENERAL QUESTIONS ABOUT SHAWNEE PARK BASIN PROJECT

- ^ WHAT IS THE PROJECT?
- ^ HOW DOES THE PROJECT IMPROVE SHAWNEE PARK?
- ^ WHAT DOES CSO MEAN?
- ^ WHAT IS A CSO BASIN?
- ^ CAN THE BASIN LEAK?
- ^ WHAT IS THE BASIN MADE OF?
- ^ WILL THERE BE ODORS IN THE PARK WHEN THE BASIN IS COMPLETE?
- ^ WHEN DOES CONSTRUCTION START AND END?
- ^ WHAT ARE THE CONSTRUCTION HOURS?
- ^ WHEN WILL THE PARK IMPROVEMENTS BE COMPLETE?
- ^ HOW WILL THE NEW PAVILION LOOK?
- ^ WHAT SHOULD I EXPECT DURING CONSTRUCTION?
- ^ WILL MY HOUSE OR BUSINESS BE AFFECTED?
- ^ WHAT STREETS WILL BE AFFECTED?
- ^ WILL MY BUS ROUTE CHANGE?
- ^ WILL THE STREETS BE KEPT CLEAN?
- ^ IS IT SAFE TO USE THE PARK?
- ^ IS IT SAFE FOR MY KIDS TO PLAY IN THE PARK?

E-News and Updates

January 5th, 2018

CHERI BRYANT HAMILTON, DISTRICT 5 COUNCILWOMAN



Cheri Bryant Hamilton
District 5 Councilwoman
601 West Jefferson Street
City Hall, 3rd Floor
Louisville, KY 40202
(502) 574-1105
E-mail:
cheri.hamilton@louisvilleky.gov

Myra Friend-Ellis
Legislative Assistant
(502) 574-3905
E-mail:
myra.friend-ellis@louisvilleky.gov
Fax: (502) 574-2560

Written By:
Chase Sanders
sherman.smith@louisvilleky.gov

Web address:
<http://www.louisvilleky.gov/district5>

Please feel free to copy any of

Shawnee Park Basin Project Stakeholder Meeting

Tuesday, January 9 at 6:00 pm
Shawnee Golf Course Clubhouse (460 Northwestern Parkway)

The Shawnee Basin Project is well underway. There is a lot of activity going on within the project, be sure that you are staying informed so **please come out and join us for this meeting.**

To learn more about what's happening in the Shawnee Park Basin Project visit:
<http://shawneeparkbasinproject.org/>

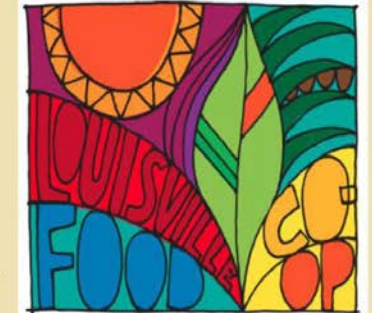
If you have any questions Molly Dorsey at shawneeparkbasinproject@gmail.com

Louisville Food Cooperative Meeting

January 9 from 5:30 pm - 7:30 pm
Joshua Tabernacle Baptist Church
(426 S. 15th Street)

Come and meet with your community to **help organize a community grocery store in Louisville.** We meet on the **second Tuesday of the month.** Make decisions and learn how to **organize a community-owned business.**

This month we will check in about the topics we have discussed over the past 6 months as we prepare to vote on them in February. **The votes in February include the neighborhood location for the store so be sure to come!**



Commonwealth Preservation Trades West End Program
1701 W. Muhammad Ali Blvd., Building C

District 5 Newsletter Updates

- Contact information

E-News and Updates

January 5th, 2018

CHERI BRYANT HAMILTON, DISTRICT 5 COUNCILWOMAN



Cheri Bryant Hamilton
District 5 Councilwoman
601 West Jefferson Street
City Hall, 3rd Floor
Louisville, KY 40202
(502) 574-1105
E-mail:
cheri.hamilton@louisvilleky.gov

Myra Friend-Ellis
Legislative Assistant
(502) 574-3905
E-mail:

Shawnee Park Basin Project Stakeholder Meeting

Tuesday, January 9 at 6:00 pm
Shawnee Golf Course Clubhouse (460 Northwestern Parkway)

The Shawnee Basin Project is well underway. There is a lot of activity going on within the project, be sure that you are staying informed so **please come out and join us for this meeting.**

To learn more about what's happening in the Shawnee Park Basin Project visit:
<http://shawneeparkbasinproject.org/>

If you have any questions Molly Dorsey at shawneeparkbasinproject@gmail.com

Louisville Food Cooperative Meeting

January 9 from 5:30 pm - 7:30 pm
Joshua Tabernacle Baptist Church
(426 S. 15th Street)

Come and meet with your community to **help organize a community grocery store in Louisville.** We meet on the **second Tuesday of the month.** Make decisions and learn how to **organize a**





OLD BUSINESS

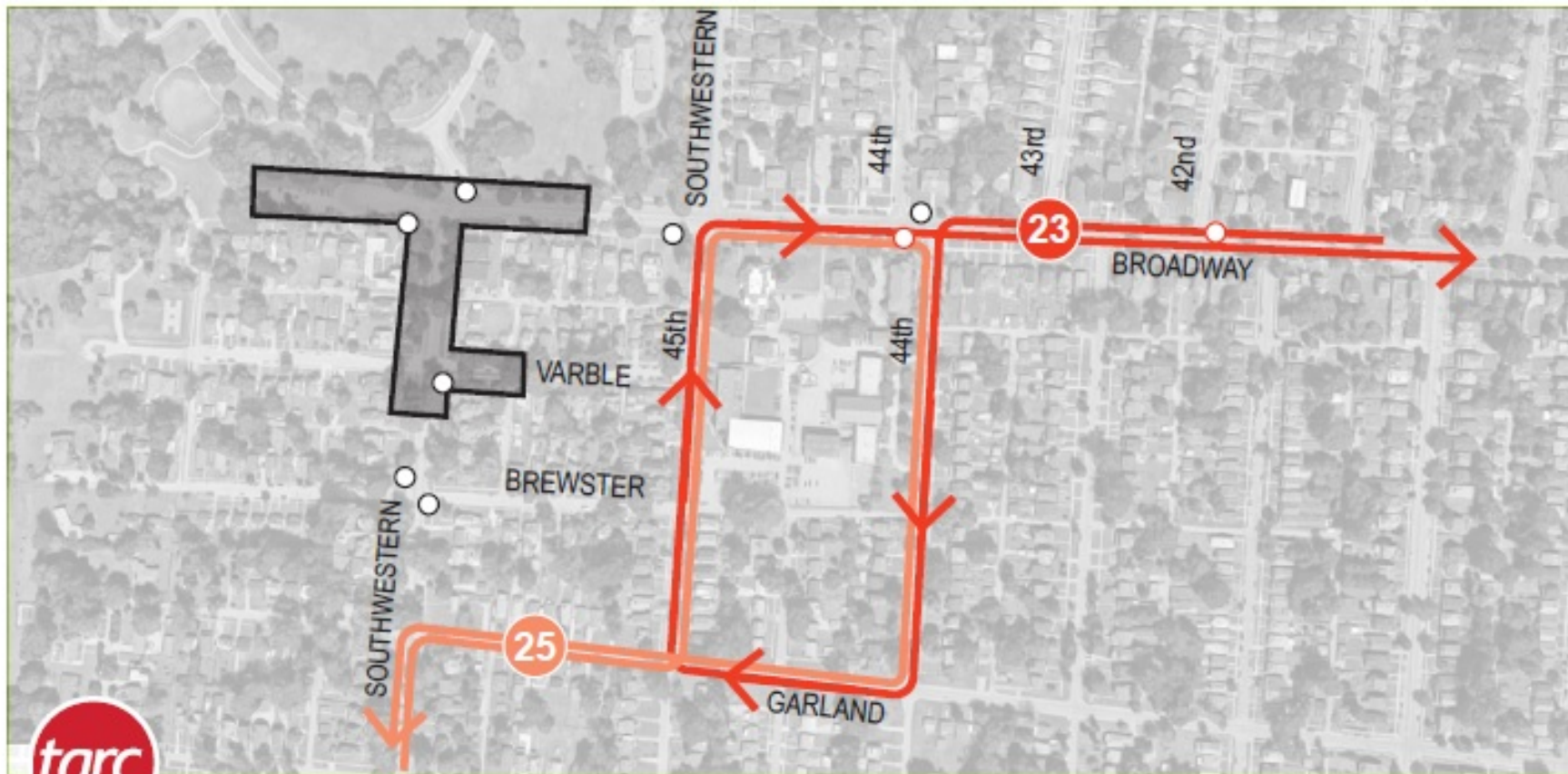


January 9, 2018 SAC Follow-up

- ✓ Road Cleanup
- ✓ TARC Reroute



Detour Shawnee Park South Broadway Loop End of the Line



TARC Planning Department 10/19/17

Due to utility relocations in the streets near MSD's Southwestern Basin project in Shawnee Park - the Broadway Loop - Southwestern Parkway from Varble Avenue to Broadway and Broadway from Southwestern Parkway to 45th Street will be closed to bus traffic from November 15, 2017 through December 2018.

Routes 23 and 25 will follow a clockwise loop around Broadway, 44th, Garland, and 45th Streets.
The end of the line for both Routes will be the shelter on Broadway at 44th Street.



NEW BUSINESS



Next SAC Meeting

- SAC Meetings
 - July 10, 2018 at 6:00 pm
 - October 9, 2018 at 6:00 pm
 - January 15, 2019 at 6:00 pm



Guest Comments

- Raise your hand to be recognized
- Comments to be held to 3 minutes



END

