



Progressive Design Build Teams



ULLIMAN SCHUTTE

BURGESS & NIPLE

# SHAWNEE PARK BASIN PROJECT

## STAKEHOLDER ADVISORY COMMITTEE MEETING NO. 5

*October 17, 2017*





# Reminders

- Feel free to quote yourself, not others. However, if you want to be quoted, be sure to say so.
- Qualify your comments if further vetting is required
- *All concerns will be heard.* Some upon request, others at the end.
- *The Parking Lot – Distracting, but important non-agenda items*



# **METRO PARKS IMPROVEMENTS**

## **Design and Construction**

# Metro Parks Improvements

|                                    | <i>Anticipated</i>  |                      |
|------------------------------------|---------------------|----------------------|
|                                    | <u><i>Start</i></u> | <u><i>Finish</i></u> |
| • <i>Renovated Athletic Courts</i> |                     |                      |
| • <i>Dirt Bowl</i>                 | <i>Apr 2017</i>     | <i>Complete</i>      |
| • <i>Basketball Courts</i>         | <i>May 2017</i>     | <i>Complete</i>      |
| • <i>Harmony Field</i>             | <i>Mid Oct 2017</i> | <i>Spring 2018</i>   |
| • <i>Improved Hornung Field</i>    | <i>Mid Sep 2017</i> | <i>Spring 2018</i>   |
| • <i>Lily Pond</i>                 | <i>Mid Aug 2017</i> | <i>Winter 2018</i>   |
| • <i>Ball House</i>                | <i>Jun 2018</i>     | <i>Fall 2018</i>     |

# Metro Parks Improvements



A construction site scene featuring a yellow bulldozer in the background and several large concrete pipes in the foreground. The image is partially obscured by a dark green horizontal band containing the word 'CONSTRUCTION' in white capital letters. The top of the image shows a blurred view of green trees against a blue sky.

# CONSTRUCTION

# Construction Progress



# Construction Progress



- Jul 17, 2017 – Oct 10, 2017
  - Completed installation of 80' sheet piles
  - Installed retention tiebacks, over 50% complete
  - Completed soil infill at Hornung Field
  - Installed dewatering system
  - Installed power feed



# Hornung Field Progress



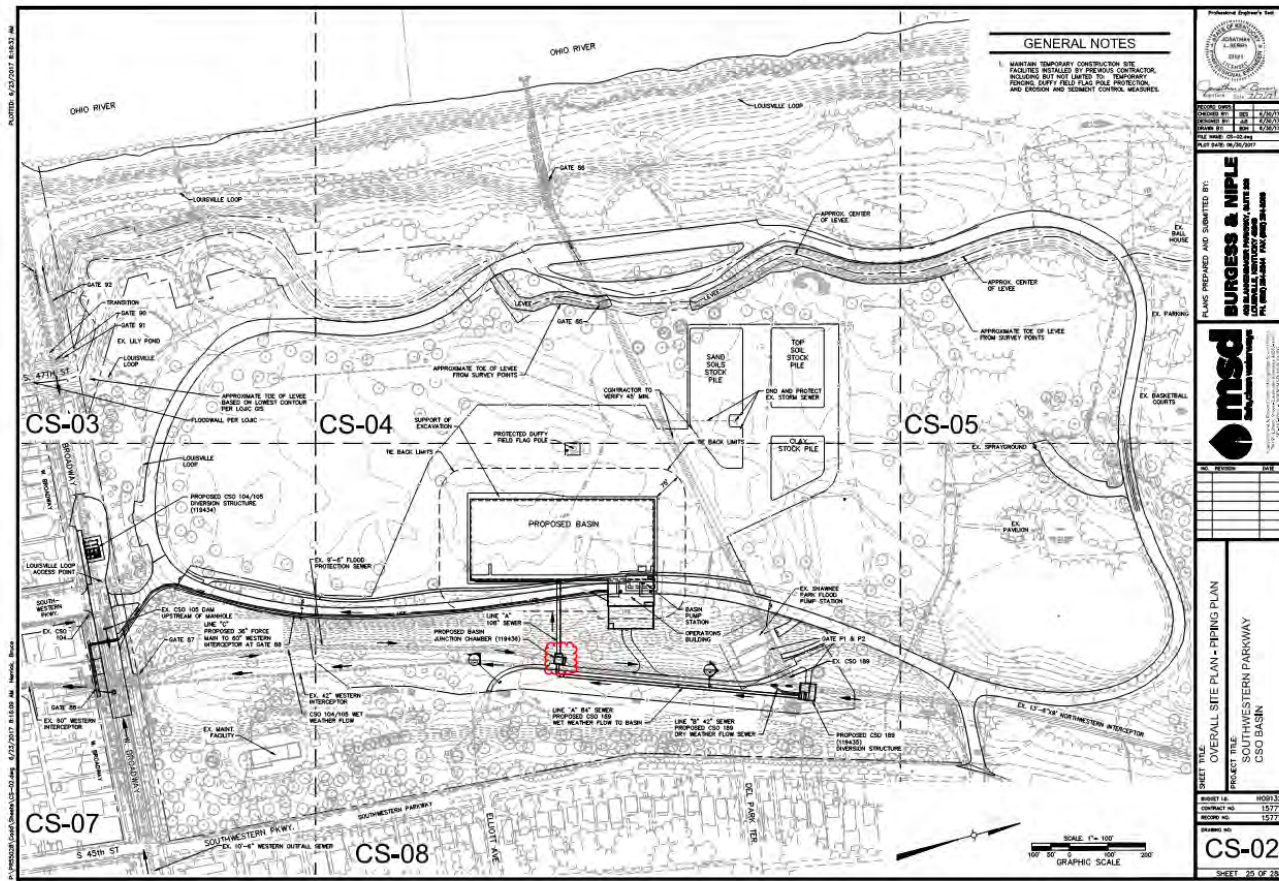
- Hauled approx. 70,000 cubic yards of soil to Hornung Field
- Seed and straw approx. 40% of field
- Expected to be complete seeding by 10/20/17.



# Upcoming Activities

- Begin Construction of Basin Junction Chamber – Mid October
- Install Deep Foundation for Basin– Early November
- Begin Basin Concrete Work – Mid November
- Erect Tower Cranes – Late November

# Basin Junction Chamber



A construction site featuring large concrete pipes in the foreground and a yellow bulldozer in the background. The scene is partially obscured by a dark green banner with white text.

# SUPPLIER DIVERSITY AND LOCAL LABOR



# Minority Business Enterprise Firms

- 7NT
- Jacobi, Toombs & Lanz
- DLZ
- Browne Engineering
- American Ready Mix
- Geco Enterprises
- Metro Fence
- TEM Electric
- Pioneer Group
- Joash Construction
- Jacobi Oil Service
- Cherokee Construction
- Hi-Mark Construction
- Springfield Plumbing



# Women Business Enterprise Firms

- Magna Engineers
- Leonard Engineering
- Third Rock Consultants
- Lykins Material Supply and Rodbuster
- Terry Collar Trucking
- Summers Grading
- Quantum Environmental
- S&M Precast
- McKinney Painting

# MBE / WBE Update

- Purchasing Ongoing
- Project Commitment
  - MBE – 15%
  - WBE – 6%
- Current Projections
  - MBE – 17.25%
  - WBE – 7.75%



# Local Labor

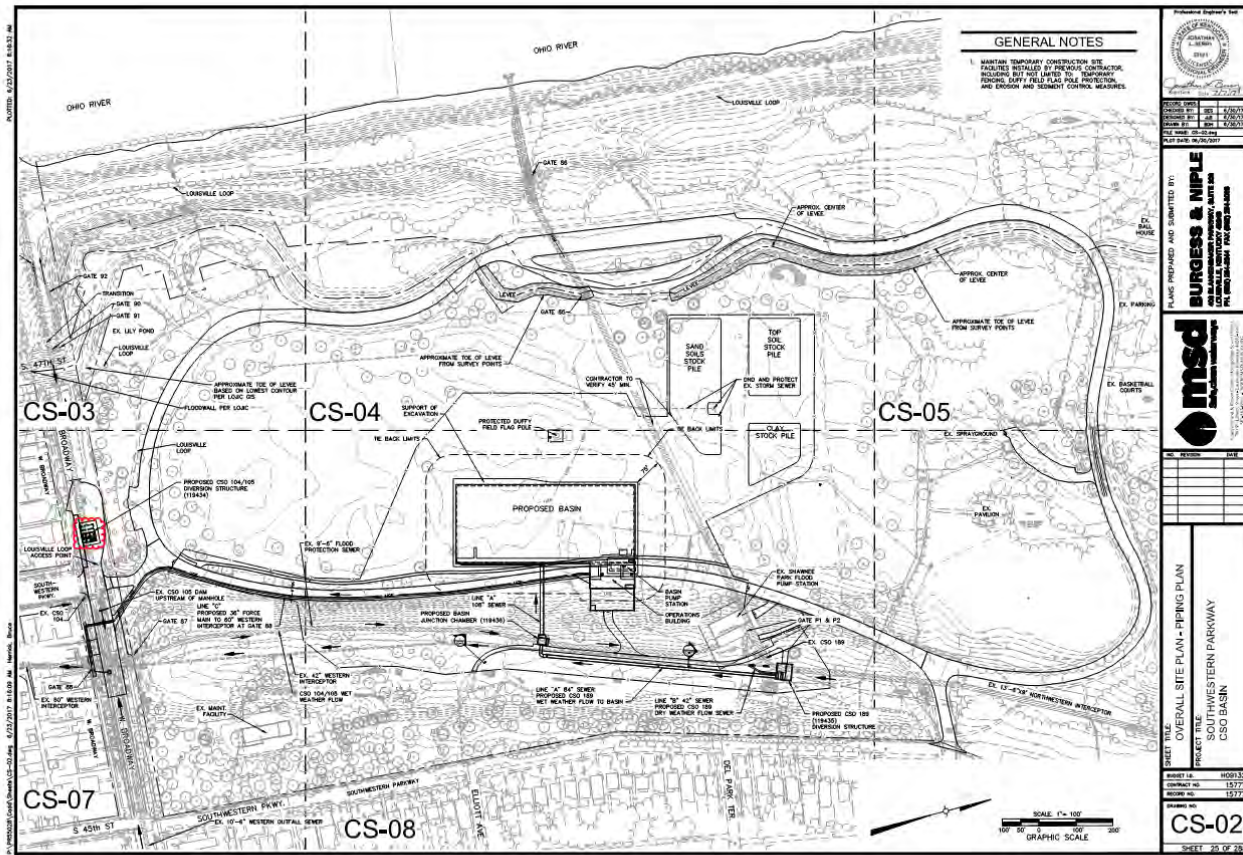
- Project Commitment – 76%
- Current Local Labor – 82%



*60 Residents from Jefferson County have worked on the project.*



# CSO 104/105 – W. Broadway



**GENERAL NOTES**

1. MAINTAIN TEMPORARY CONSTRUCTION SITE FACILITIES INSTALLED BY PREVIOUS CONTRACTOR, INCLUDING BUT NOT LIMITED TO: SURVEYING, FENCING, SUFFY FIELD FLAG POLE PROTECTION, AND EROSION AND SEDIMENT CONTROL MEASURES.

Professional Engineer's Seal  
 State of Ohio  
 License No. 10901-53  
 Contract No. 15777  
 Sheet No. 15777  
 SHEET 20 OF 203

PLANS PREPARED AND SUBMITTED BY:  
**BURRESS & NIPILE**  
 ENGINEERS  
 1000 W. BROADWAY, SUITE 200  
 LOUISVILLE, KY 40203  
 TEL: (502) 261-1111  
 FAX: (502) 261-1112  
 WWW.BURRESS-AND-NIPPLE.COM

**msd**  
 Metropolitan Sewer District  
 1000 W. BROADWAY, SUITE 200  
 LOUISVILLE, KY 40203  
 TEL: (502) 261-1111  
 FAX: (502) 261-1112  
 WWW.MSDKY.COM

SHEET TITLE: OVERALL SITE PLAN - PIPING PLAN  
 PROJECT TITLE: W. BROADWAY PARKWAY  
 CSO BASIN

DATE: 10/20/2017 8:11:00 AM  
 SCALE: 1" = 100'  
 GRAPHIC SCALE

# Workforce Development

- PDB team will implement a new method aimed to increase awareness of basin project job opportunities within the local communities they served



A construction site featuring large concrete pipes in the foreground and a yellow bulldozer in the background. The scene is partially obscured by a white mist or smoke effect. A dark green horizontal band is overlaid across the middle of the image, containing the text.

# **PUBLIC AND COMMUNITY OUTREACH**

# Previous Outreach Activities

- PDB Team attended District 5's Advisory Committee Meeting
- PDB Team attended the 2017 Dirt Bowl – handed out project basketballs
- One on one meeting with concerned Southwestern Parkway Resident

## The Shawnee Park Basin Project

will create a cleaner river, provide new amenities, and preserve the historic nature of Shawnee Park. The improved Shawnee Park will feature:

- Premium landscaping
- Construction of an open air pavilion and restroom facility
- New paved parking at sprayground
- Restored loop road
- Restored athletic courts and ball house
- Renovated lily pond

## Over the next 90 days\* expect:

- Continued digging and trucking
- Installing metal sheet tiebacks
- Construction of basin foundation



\*Posted August 31, 2017



# Community Feedback

## Our Tactics

- Encourage community to use website and hotline
- Provide Metro Council District 5 office with redirect information
- Provide project superintendents with hot cards
- Log community comments and provide 24 hour response times
- Personal meetings as needed

# Outreach Notification

- Meet and Educate Residents
- Inform Contractor of Residents Concerns
- Optimize Plan
- Notify Residents and Share Ideas



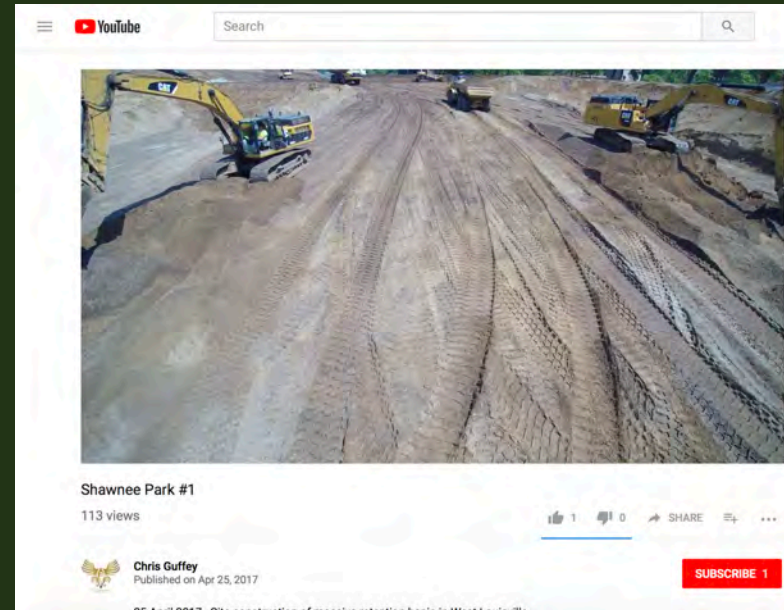
# Upcoming Outreach Activities

- Construction adjacent to the CSO 104/105 Diversion Structure at the end of W Broadway
- Upcoming article on Hornung field – will be on website
- Juice Bowl Thanksgiving Day 2017



# Website Updates

- Notices section always up to date
- Youtube Videos of the Contruction Site
- Shawnee Park Basin Project Newsletter



## SO, WHAT IS EXCAVATION SUPPORT?

For anyone that lives in the neighborhood, you may have heard the construction but not seen it. The noise that you've heard is our effort to keep construction workers safe. It is well known that the Shawnee Park Basin will exist 50-55 feet below the park's surface (or grade). To accomplish this, a very deep and wide area must be dug (or excavated) below grade. Excavation support eliminates the potential for cave ins to occur while people and equipment are working below grade. Excavation support consists of different mechanical components, the most significant being Sheet Piles. Sheet piles are long slender sheets of steel, which look like interlocking waffle shapes that are forced into the ground by a large machine called a pile driver. These piles are used for the purpose of holding the earth back as soil is removed from one side.

## NEW TRUCK ROUTE AROUND HORNING FIELD

Horning Field is part of the Shawnee Park complex and is located between Harmony field and Southwestern Parkway. It is named after NFL Hall of Fame Green Bay Packer, Paul Hornung, who attended Flaget High School. Flaget High School was a Catholic College Preparatory High School in the West End from 1942 until 1974. It was located at 48th and River Park Drive. Currently, Horning Field is often wet due to its low elevation. Metro Parks and the Shawnee Park Basin Project team will raise the elevation of the field with surplus soil excavated from the basin construction. Moving the material to Horning Field will begin this week and will continue through October 2017. Park patrons will notice temporary orange construction fencing along the roads that will guide them to cross walks. There will be flaggers stationed near the entrances of River Park Dr. and Horning Field. All entrances to the park will remain open during this work, however, those individuals entering the park from River Park Dr. may be impacted by construction traffic. We recommend vehicles enter from the Shawnee Park Rd. or W. Broadway. All the park amenities will remain open during this work.

### Notices

September 6, 2017 / Notices

#### New Signage Is Posted

The signs that you may have seen around the park are updated. The signage gets changed every 90 days to keep the community informed of what is happening in the construction project. See updated signage below...

August 29, 2017 / Notices

#### Pile Driving Completed

As of Tuesday, August 29, the pile driving is complete. The noises that accompanied the pile driving, which consisted of loud booms, will be subsiding. From now on you can expect the regular construction noises as normal. If you have questions or concerns, please contact.....

Myra Friend-Ellis  
Legislative Assistant  
(502) 574-3905  
E-mail: myra.friend-ellis@kentucky.gov

May 26, 2017 / Notices

## E-News and Updates

July 13th, 2017

### CHERI BRYANT HAMILTON, DISTRICT 5 COUNCILWOMAN

**District 5 Neighborhood Advisory Committee Meeting**  
**New Meeting Location!**  
 Monday, July 17th at 6:00 pm  
 Volunteers of America - 4303 W. Broadway

On Monday, July 17th at 6:00 pm the District 5 Neighborhood Advisory Committee Meeting will be meeting at the new Volunteers of America building located 4303 W. Broadway this month to celebrate the opening of the new building. **Special Presentation re: Passport Health Project at 18th & Broadway & Diane Potter about recent JCPS Staff and Other Changes**

The community is encouraged to attend this meeting. Your questions and concerns are necessary in order to improve the community!

**Public Comment Period for Heritage West to Close on Monday, July 17th!**

A food coop, a research park, a track and field facility, and a development dubbed Heritage Gardens have been proposed for the vacant, former proposed Foodport site in the Russell neighborhood at 30th and Muhammad Ali Blvd. The city asks that people weigh in on the four ideas for the 24-acre site. The four development proposals can also be viewed at the Shawnee and Western Branch Libraries.

**Timeline**

- Public comment period open until Monday, July 17th
- Develop Louisville social media accounts

Cheri Bryant Hamilton  
 District 5 Councilwoman  
 601 West Jefferson Street  
 City Hall, 3rd Floor  
 Louisville, KY 40202  
 (502) 574-1105  
 E-mail: cheri.hamilton@kentucky.gov

Myra Friend-Ellis  
 Legislative Assistant  
 (502) 574-3905  
 E-mail: myra.friend-ellis@kentucky.gov





# OLD BUSINESS

# July 18, 2017 SAC Follow-up

## SAC Scorecard Results

✓ Overall results was an average of 8.2 out of 10

✓ Achieving our goal

## Action Items

✓ Provide detailed results for local labor inclusion and supplier diversity



### Shawnee Park Basin Project Stakeholder Score Card Average Responses

The Stakeholder Advisory Committee shared feedback in regard to the achievement of our project's key mission objectives.

The following scale was used for each question:



#### Insure a Well-Informed Community – Average Response Below

Do you feel, we as Stakeholders, are keeping the community well informed about the following?

The overall expectations concerning the construction of the basin? 8.1

Clear expectations of construction activities and events for the basin? 8

The expected improvements to the Shawnee Park? 8.4

#### Maximize Mutual Community Benefit

Do you feel the Stakeholder committee does a good job of listening and respecting the concerns of all Stakeholders? 8.5

Does the committee effectively work to find solutions that enrich the neighborhood while meeting the expectations of the construction project? 8.1

#### Improve the Value of the Park

Is the Stakeholder committee doing an effective job of championing the development of park amenities so that they capture the rich and historic nature of Shawnee Park? 9.1

#### Issue-Free Basin Construction

Is the Stakeholder committee effectively providing leadership to the community with regard to this construction project? 8.2

Do you feel we are working to promote a safe construction project, completed on time and within budget, with minimal disruption to the surrounding neighborhood? 8.5

#### Create Opportunities Within the Community

Is the Stakeholder committee doing an effective job identifying and engaging the following groups with regard to opportunities that will arise from the Shawnee Park Basin Project and Metro Parks improvements?

Engaging minorities and residents? 8.1

Engaging women-owned businesses? 7.7

Engaging minority businesses? 8.3

The image features a central green banner with the text "NEW BUSINESS" in white, bold, sans-serif font. The background is a composite image of a construction site. In the foreground, several large, light-colored concrete pipes are stacked. In the background, a yellow bulldozer is visible, partially obscured by the pipes. The top of the image shows a blurred view of green trees against a blue sky.

# NEW BUSINESS



## Next SAC Meeting

- Next SAC Meeting
  - Recommend move to Tuesday, January 9, 2018 at 6:00 pm



## Guest Comments

- Raise your hand to be recognized
- Comments to be held to 3 minutes



**END**

