



Progressive Design Build Team



**BURGESS & NIPLE**

# SHAWNEE PARK BASIN PROJECT

## STAKEHOLDER ADVISORY COMMITTEE

### MEETING NO. 4

*July 18, 2017*





# Reminders

- Feel free to quote yourself, not others. However, if you want to be quoted, be sure to say so.
- Qualify your comments if further vetting is required
- *All concerns will be heard.* Some upon request, others at the end.
- *The Parking Lot – Distracting, but important non-agenda items*



The background of the slide is a photograph of a construction site. In the foreground, several large, light-colored concrete pipes are stacked horizontally. In the background, a yellow bulldozer is visible, partially obscured by the pipes. The top of the image shows the dark green foliage of trees against a blue sky. A dark green horizontal band is positioned across the middle of the image, containing the main title in white text.

# **MSD IN KIND EXPENSES**

## **Design and Construction**





RESTROOM, PLAZA  
& PAVILION

COURTYARD

JUNCTION  
CHAMBER

EXISTING FLOOD  
PUMP STATION

ACCESS ROAD

DIVERSION  
STRUCTURE



The background of the slide is a photograph of a construction site. In the foreground, several large, light-colored concrete pipes are stacked horizontally. In the background, a yellow bulldozer is visible, partially obscured by the pipes. The top of the image shows the dark green foliage of trees against a blue sky. A dark green horizontal band is positioned across the middle of the image, containing the main title in white text.

# **METRO PARKS IMPROVEMENTS**

**Design and Construction**





# Metro Parks Improvements

	<i>Anticipated</i>	
	<u><i>Start</i></u>	<u><i>Finish</i></u>
• <i>Renovated Athletic Courts</i>		
• <i>Dirt Bowl</i>	<i>Apr 2017</i>	<i>Complete</i>
• <i>Basketball Courts</i>	<i>May 2017</i>	<i>Mid Jul 2017</i>
• <i>Harmony Field</i>	<i>Mid Oct 2017</i>	<i>Dec 2017</i>
• <i>Improved Hornung Field</i>	<i>Mid Sep 2017</i>	<i>Nov 2017</i>
• <i>Lily Pond</i>	<i>Mid Aug 2017</i>	<i>Nov 2017</i>
• <i>Ball House</i>	<i>Jun 2018</i>	<i>Sep 2018</i>



# Metro Parks Improvements



Completed Dirt Bowl



The background of the slide is a photograph of a construction site. In the foreground, several large, light-colored concrete pipes are stacked horizontally. In the background, a yellow excavator is visible, partially obscured by the pipes. The top of the image shows the dark green foliage of trees against a blue sky. A dark green horizontal band is positioned across the middle of the image, containing the title text.

# **SHAWNEE PARK BASIN**

## **Design and Construction**



# Activity to Date





# Activity to Date

## Construction Commenced April 3, 2017

- Erosion control measures installed
- Public protection (fencing, traffic control, etc.) installed
- Strip and stockpiled 1<sup>st</sup> lift of excavation, approx. 150,000 cy
- Began installation of 80' sheet pile, approx. 50% complete





# Upcoming Activities

- Continue sheet pile installation – Thru mid August
- Excavate for tieback installation (approx. 10,000 cy hauled offsite) – End of July
- Install tiebacks



# Tieback Installation





# Safety, Security, & Access

# Safety, Security, & Access



- Installed approx. 1 mile of 8' High Temp Fence
- Hired local firm for night time security



# Safety, Security, & Access



- Worked with Stakeholders to provide additional signage
- Added additional traffic control at West Broadway gate



# Safety, Security, & Access

P:\PR55028\Cadd\Working\Walking\_Loop\_Handout.dwg 4/19/2017 2:31:33 PM Herrick, Bruce

PLOTTED: 4/19/2017 2:31:39 PM



- Worked with Stakeholders to add walking maps



# Safety, Security, & Access

- Worked with Stakeholders to provide additional traffic modifications





# Vibration Monitoring



# Vibration Monitoring

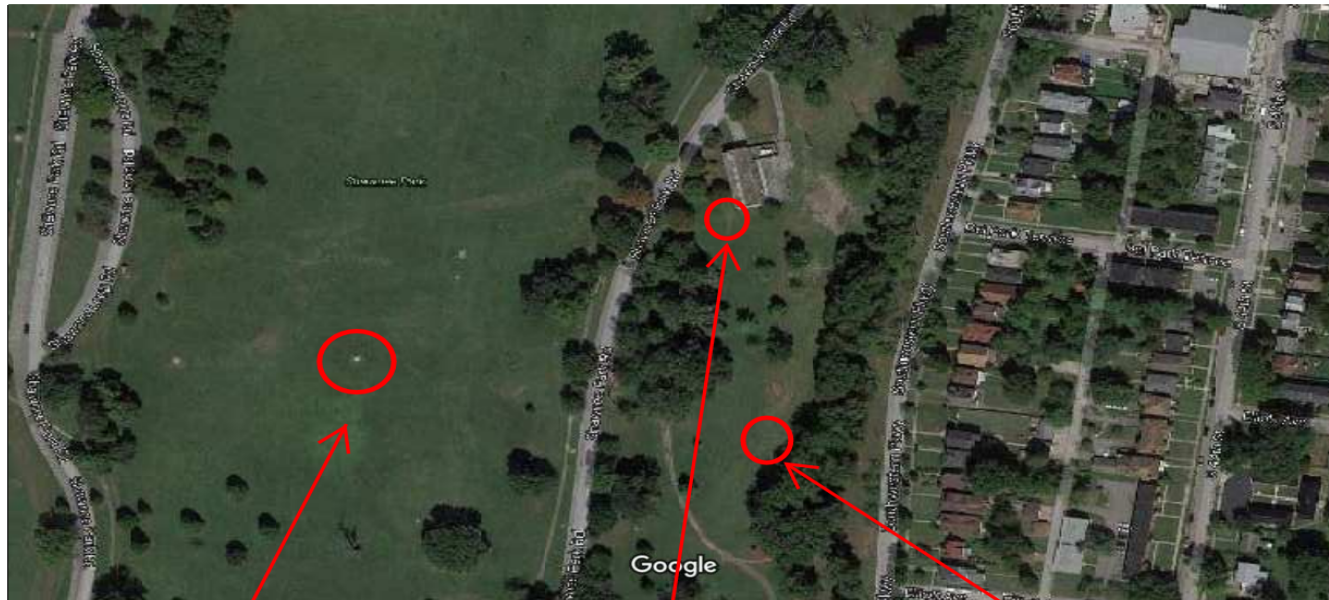
5/10/2017

Shawnee Park - Google Maps

Google Maps

Shawnee Park

Vibration Monitoring Locations



Location #1:  
Flag Pole

Location #2:  
PUMP

Location #3:  
PARK



<https://www.google.com/maps/place/Shawnee+Park/@38,2540314,-85,8274415,344m/data=!3m1!1e3!4m5!3m4!1s0x88696cbf6d055583:0x7a984027215a162c!8m2!3d38,260336!4d-85,8293052>

1/3

- 3 monitors in the park
- Monitors active during pile driving operations





# Vibration Monitoring

## Limits

- Vibration intensity is measured in inches per second
- Office of Surface Mining sets acceptable limits for vibration intensity
- The acceptable limit for residential structures is set to NOT exceed 1/2 inches per second
- The PDB Team has set its monitors to notify the team for vibrations that exceed 1/4 inches per second, half of the acceptable limit





# SUPPLIER AND WORKFORCE DIVERSITY



Inclusion Goals: 15% MBE  
6% WBE

**18** of approximately **30** subcontracts have been awarded

Results to Date: 8.3% MBE paid to date

23.0% WBE paid to date





# Workforce Development

- The project is on target to meet its 76% local labor commitment
- PDB team will implement a new method aimed to increase awareness of basin project job opportunities within the local communities they served





# PUBLIC AND COMMUNITY OUTREACH



# Public Outreach

## 10 Tactics to Date

- ShawneeParkBasinProject.org
- Toll free hotline (844) 429-5817
- Park signage and FAQs
- District 5 newsletter inserts
- Ground Breaking
- Park events participation
- Door to Door and mail notifications
- Neighborhood organizations notifications
- Radio show presentation
- Public and Stakeholder meetings





ShawneeParkBasinProject.org



[Home](#)

[FAQ's](#)

[Public Q & A](#)

[Notices](#)

[Events](#)

[Contact](#)

[Stakeholders Login](#)

[Shawnee Park MOA](#)

**OVER THE NEXT 90 DAYS EXPECT:  
Excavation Work, Pavement Work At  
Athletic Courts, And The Installation  
Of Metal Sheet Piles**




## District 5 Newsletter Inserts

# E-News and Updates

July 13th, 2017

## CHERI BRYANT HAMILTON, DISTRICT 5 COUNCILWOMAN



Cheri Bryant Hamilton  
District 5 Councilwoman  
601 West Jefferson Street  
City Hall, 3rd Floor  
Louisville, KY 40202  
(502) 574-1105  
E-mail:  
[cheri.hamilton@louisvilleky.gov](mailto:cheri.hamilton@louisvilleky.gov)

Myra Friend-Ellis  
Legislative Assistant  
(502) 574-3905  
E-mail:

### District 5 Neighborhood Advisory Committee Meeting

**New Meeting Location!**  
Monday, July 17th at 6:00 pm  
Volunteers of America - 4303 W. Broadway

On Monday, July 17th at 6:00 pm the District 5 Neighborhood Advisory Committee Meeting will be meeting at the new Volunteers of America building located **4303 W. Broadway this month** to celebrate the opening of the new building. **Special Presentation re: Passport Health Project at 18th & Broadway & Diane Porter about recent JCPS Staff and Other Changes**


The community is encouraged to attend this meeting. Your questions and concerns are necessary in order to improve the community!

### Public Comment Period for Heritage West to Close on Monday, July 17th!

A food coop, a research park, a track and field facility, and a development dubbed Heritage Gardens have been proposed for the vacant, former proposed Foodport site in the Russell neighborhood at 30th and Muhammad Ali Blvd. The city asks that people weigh in on the four ideas for the 24-acre site. The four development proposals can also be viewed at the Shawnee and Western Branch Libraries.

**Timeline**

- Public comment period open until Monday, July 17th
  - Develop Louisville social media accounts
  - Develop planning website





## Park Signage

### The Shawnee Park Basin Project

will create a cleaner river, provide new amenities, and preserve the historic nature of Shawnee Park. The improved Shawnee Park will feature:

- Premium landscaping
- Construction of an open air pavilion and restroom facility
- New paved parking at sprayground
- Restored loop road
- Restored athletic courts and ball house
- Renovated lily pond

### Over the next 90 days\* expect:

- Excavation work
- Pavement work at athletic courts
- Delivery and installation of metal sheet piles



\*Posted May 29, 2017



## Ground Breaking






## Park Events Participation





## Door to Door and Mail Notifications





**What is the Shawnee Park Basin Project?**

Polluted runoff is often untreated and discharged directly into local water bodies. When left uncontrolled, this water pollution can impact fish, wildlife, and aquatic habitats, while also posing threats to public health and recreational waterways. As a result of a mandate enacted by the Environmental Protection Agency, Louisville MSD is constructing a water retention facility at Shawnee Park to eliminate untreated overflow into the Ohio River. MSD is making every effort to minimize impacts on the adjacent neighborhoods, and restore amenities that capture the rich history and diverse culture of the Shawnee Park community.

This meeting is to discuss the areas of the park that will be affected by construction, construction truck

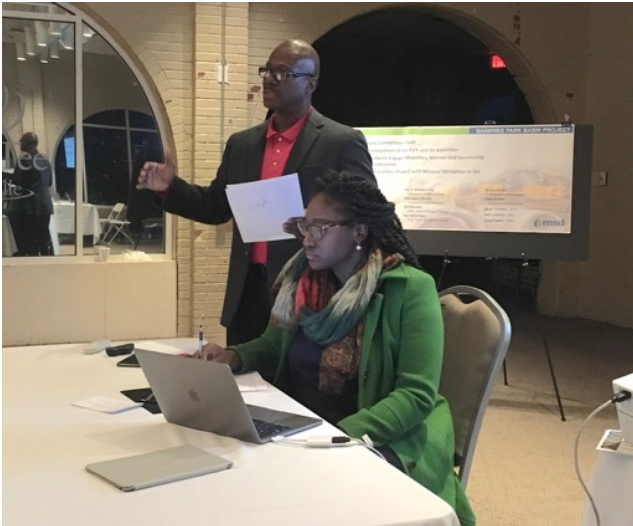
**"Pardon Our Dust" Pre-Construction Community Meeting**

Tuesday, November 29, 2016 • 6:30 PM  
Shawnee Park Golf Course Clubhouse  
460 Northwestern Parkway • Louisville, KY 40212





## Public and Stakeholder Meetings







# Public Outreach

## Upcoming Park Events

### Dirt Bowl in August 2017

- PDB Team engaged Dirt Bowl representative
- PDB Team will attend the event on 7/30 and 8/13
- The team will be available to answer questions and provide informational materials during peak event hours

### Juice Bowl in November 2017

- To be determined



# Community Feedback

Community Feedback





# Community Feedback

## Our Tactics

- Encourage community to use website and hotline
- Provide Metro Council District 5 office with redirect information
- Provide project superintendents with hot cards
- Log community comments and provide 24 hour response times
- Personal meetings as needed





# Community Feedback

## Vibration Complaint - 633 Southwestern Parkway

- 7/8 - Vibration complaint received on site
- 7/10 - Vibration complaint received as a voicemail
- 7/10 - PDB team made telephone contact with property owner
- 7/12 - PDB team conducted personal visit with property owner



# Community Feedback

UNDERSTAND, ACKNOWLEDGE, EDUCATE

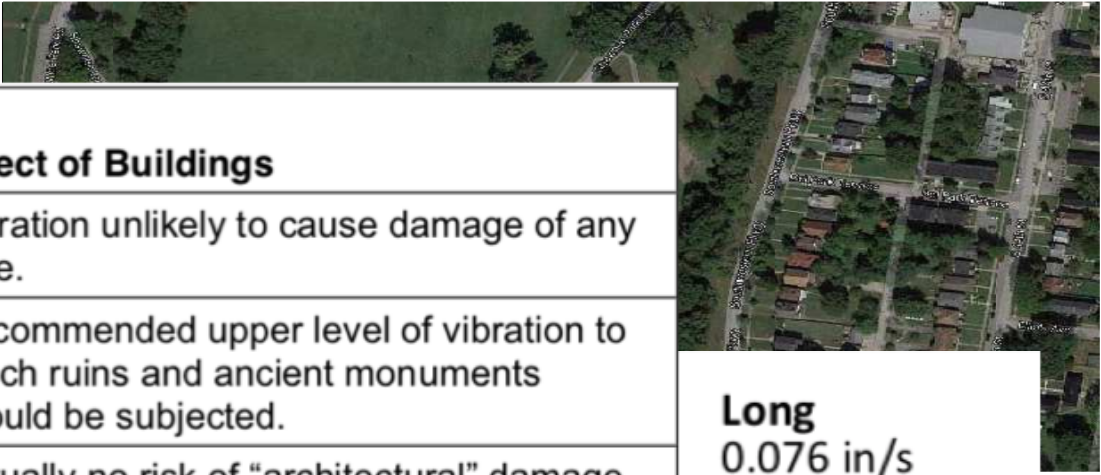
Vibration Level, PPV (in/sec)	Human Reaction	Effect of Buildings
0.006 to 0.019	Threshold of perception: Possibility of intrusion	Vibration unlikely to cause damage of any type.
0.08	Vibrations readily perceptible	Recommended upper level of vibration to which ruins and ancient monuments should be subjected.
0.10	Level at which continuous vibrations begin to annoy people	Virtually no risk of "architectural" damage to normal buildings.
0.20	Vibrations annoying to people in buildings	Threshold at which a risk of "architectural" damage exists to normal dwellings such as plastered walls or ceilings.
0.40 to 0.60	Vibrations considered unpleasant by people subjected to continuous vibrations	Vibration at this level would cause "architectural" damage and possibly minor structural damage.

5/10/2017

Shawnee Park - Google Maps

Google Maps Shawnee Park

Vibration Monitoring Locations



Long

0.076 in/s

21.3 Hz

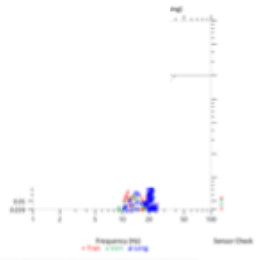
Jul 7, 2017

16:04:49


✓ Passed

7.3 Hz

3.4



short duration, usually 2 to 10 seconds, because the air blast contains mostly low frequencies (typically less than 200 Hz). It is often felt rather than heard. The overpressure (and resultant noise) is a function of the source strength (charge weight), weather conditions, and distance to the receiver. Factors that affect ground vibration transmission include explosive composition, charge weight and delays, distance, depth of burial of the charge, and geologic formations. Air overpressure transmission is also affected by intensity, terrain features (e.g., trees, foliage, and other screening), orientation of the blast face, atmospheric conditions, temperature gradients, and wind direction and velocity.





The background image is a composite of two parts. The top part shows a dense canopy of green trees against a blue sky. The bottom part shows a construction site with several large, light-colored concrete pipes stacked in the foreground. In the background, a yellow bulldozer is visible, partially obscured by the pipes and some wooden structures.

# OLD BUSINESS





# April 18, 2017 SAC Follow-up

## Survey Items

- ✓ Metro Parks to provide Planned Start and Finished dates for its improvements

## Action Items

- ✓ No new action items



The background of the slide is a photograph of a construction site. In the foreground, several large, light-colored concrete pipes are stacked horizontally. In the background, a yellow bulldozer is visible, partially obscured by the pipes. The top of the image is framed by a dark green banner with white text.

# NEW BUSINESS



# How are We Doing?

- SAC Score Card

*A discussion of the  
Stakeholder Advisory Committee's  
progress to date*



## Shawnee Park Basin Project Stakeholder Score Card

How are we doing as Stakeholders with respect to achieving the key elements of our mission for this project? Please share your feedback on the following items:

For each question use the following scale:

needs more effort ← 1 2 3 4 5 6 7 8 9 10 → achieving our goal

**Insure a Well-Informed Community**  
Do you feel, we as Stakeholders, are keeping the community well informed about the following?

The overall expectations concerning the construction of the basin? \_\_\_\_\_

Clear expectations of construction activities and events for the basin? \_\_\_\_\_

The expected improvements to the Shawnee Park? \_\_\_\_\_

**Maximize Mutual Community Benefit**  
Do you feel the Stakeholder committee does a good job of listening and respecting the concerns of all Stakeholders? \_\_\_\_\_

Does the committee effectively work to find solutions that enrich the neighborhood while meeting the expectations of the construction project? \_\_\_\_\_

**Improve the Value of the Park**  
Is the Stakeholder committee doing an effective job of championing the development of park amenities so that they capture the rich and historic nature of Shawnee Park? \_\_\_\_\_

**Issue-Free Basin Construction**  
Is the Stakeholder committee effectively providing leadership to the community with regard to this construction project? \_\_\_\_\_

Do you feel we are working to promote a safe construction project, completed on time and within budget, with minimal disruption to the surrounding neighborhood? \_\_\_\_\_

**Create Opportunities Within the Community**  
Is the Stakeholder committee doing an effective job identifying and engaging the following groups with regard to opportunities that will arise from the Shawnee Park Basin Project and Metro Parks improvements?

Engaging minorities and residents? \_\_\_\_\_

Engaging women-owned businesses? \_\_\_\_\_

Engaging minority businesses? \_\_\_\_\_





## Next SAC Meeting

- Next SAC Meeting
  - Recommend move to Tuesday, October 17, 2017 at 6:00 pm



## Guest Comments

- Raise your hand to be recognized
- Comments to be held to 3 minutes





**END**



# Vibration Monitoring

## Vibration Limits

Data 7/5/17

