

Portland CSO Basin Conceptual Design Meeting

Neighborhood House
January 26, 2016



What We Will Talk About Tonight

1. **Why We Are Here**
2. **Public Outreach Process**
 - Project Phases
 - MSD & Citizen Roles
3. **Getting to Know You**
 - Demographics
4. **Introduction to the Portland CSO Basin Project**
 - Basin Drainage Area
 - Site Selection Process
 - Preferred Location
 - Frequently Asked Questions
5. **Park Usage**
6. **Next Steps**
7. **Feedback**

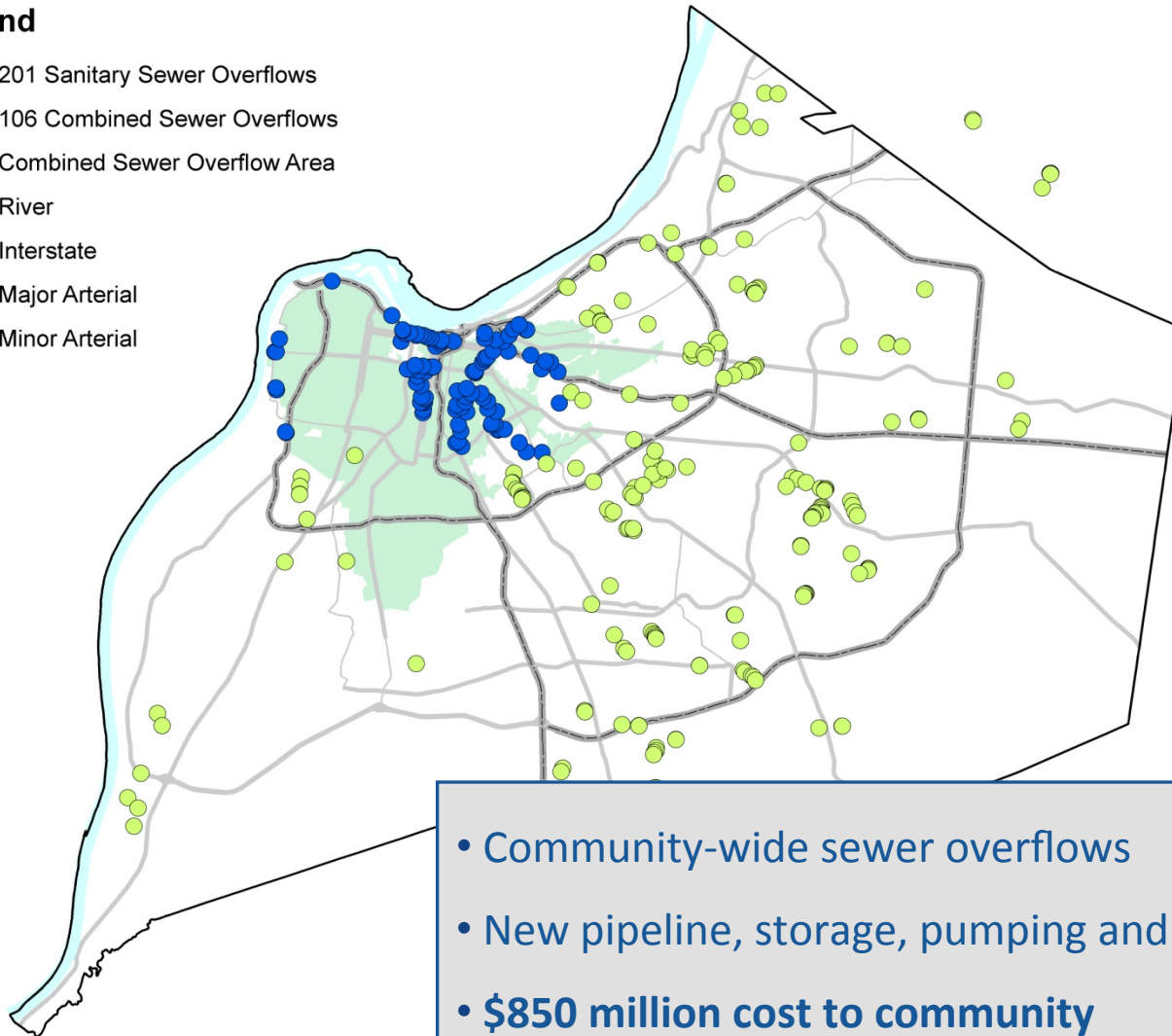


1. Why We Are Here

SEWER OVERFLOW LOCATIONS (2008)

Legend

- 201 Sanitary Sewer Overflows
- 106 Combined Sewer Overflows
- Combined Sewer Overflow Area
- River
- Interstate
- Major Arterial
- Minor Arterial



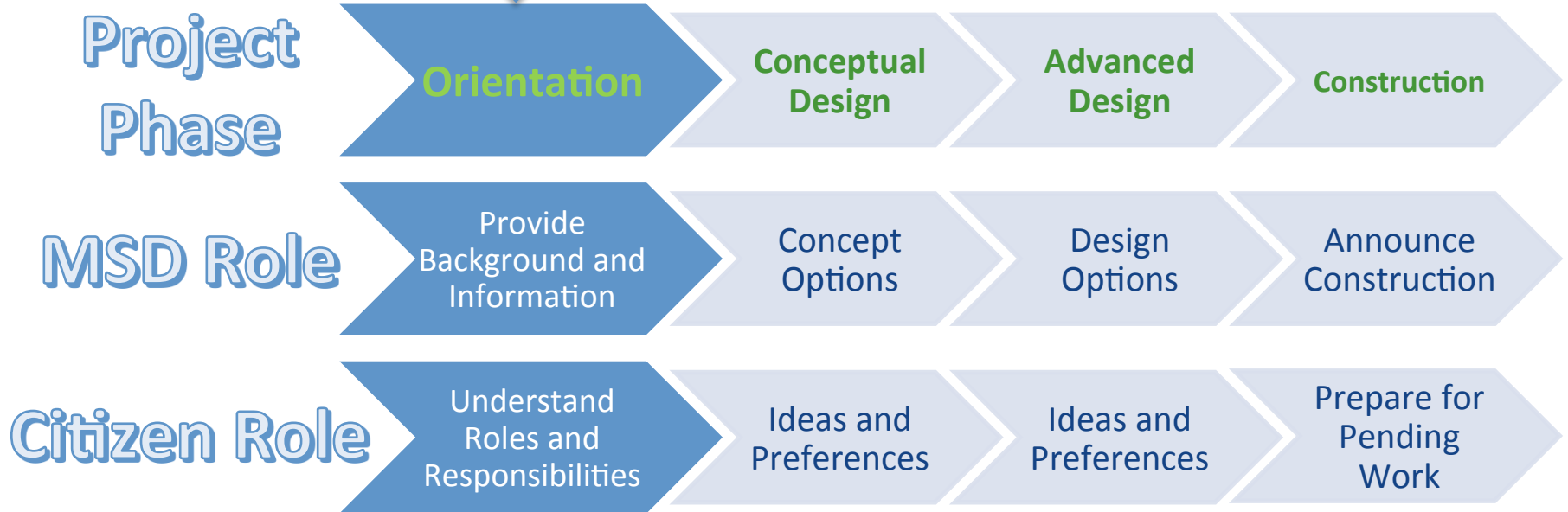
- Community-wide sewer overflows
- New pipeline, storage, pumping and treatment
- **\$850 million cost to community**

CSO Storage Basins per Consent Decree



2. Public Outreach Process

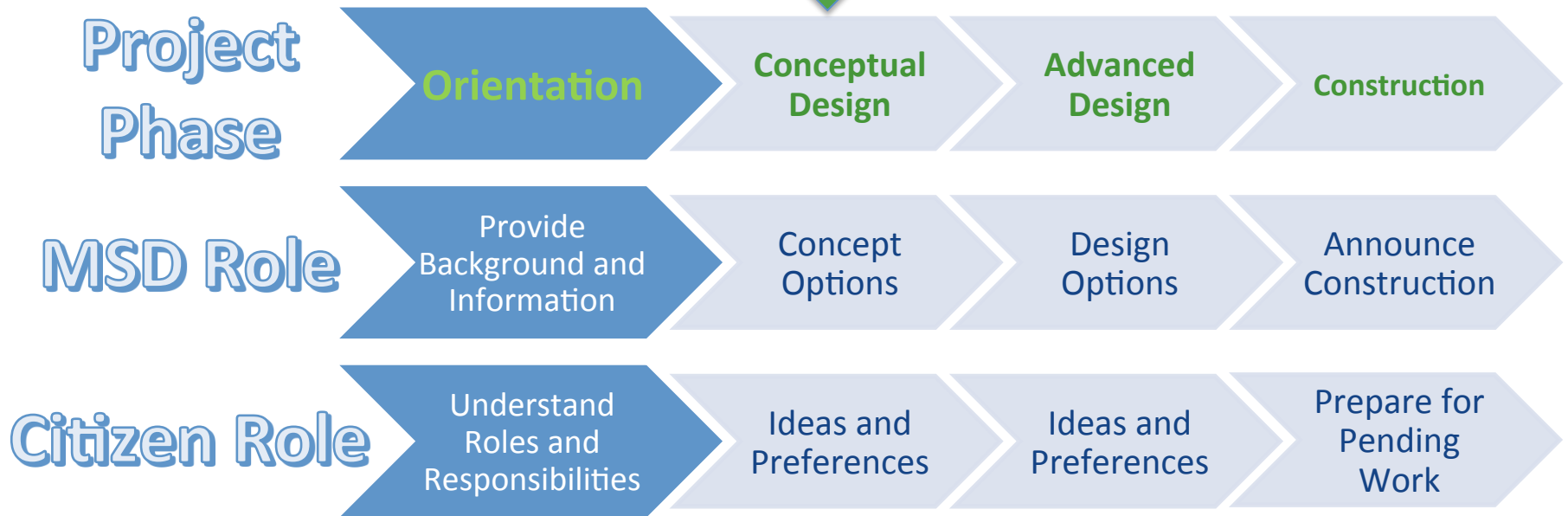
Project Phases and Roles



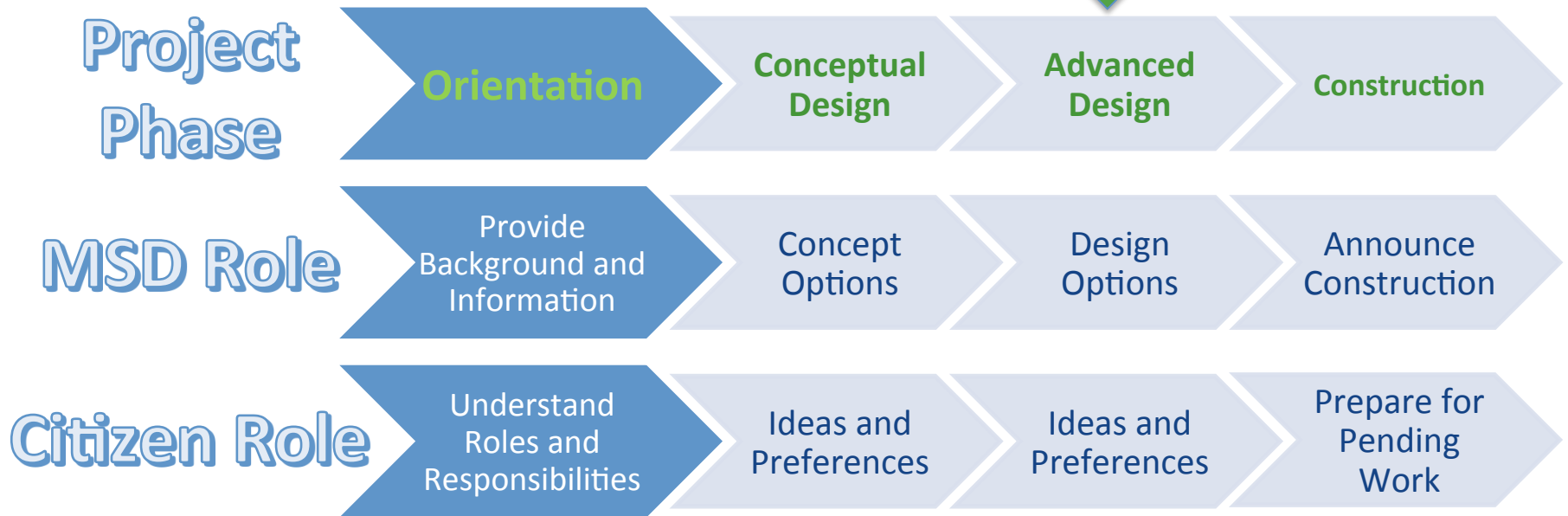
Project Phases and Roles

- Orientation Meeting was held at Western Middle School on February 9, 2015
- Discussed Combined Sewer Overflows (CSO's)
 - Causes of Overflows
 - What you can do
 - What MSD is doing
- Orientation meeting presentation and video are available on ProjectWIN Website
- We're back to talk with you about conceptual design

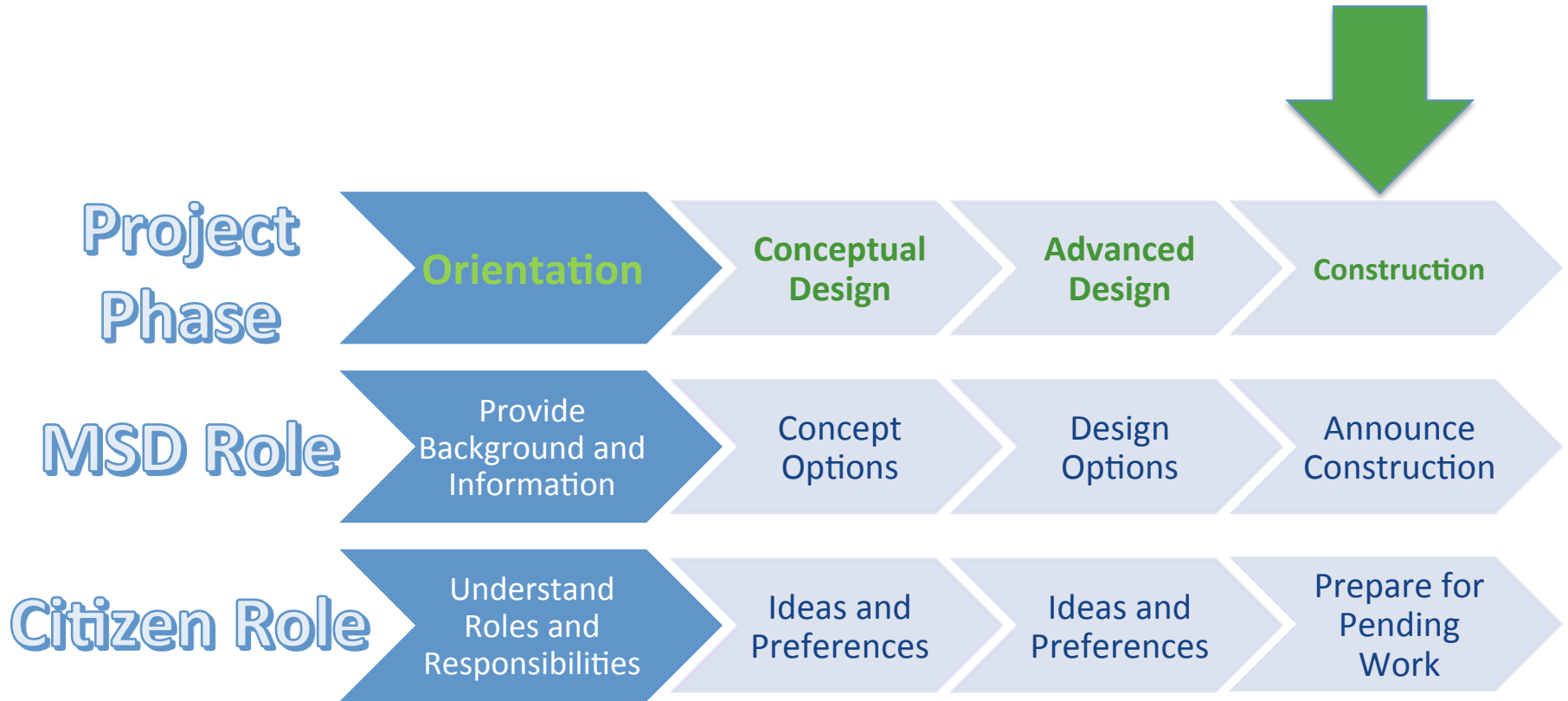
Project Phases and Roles



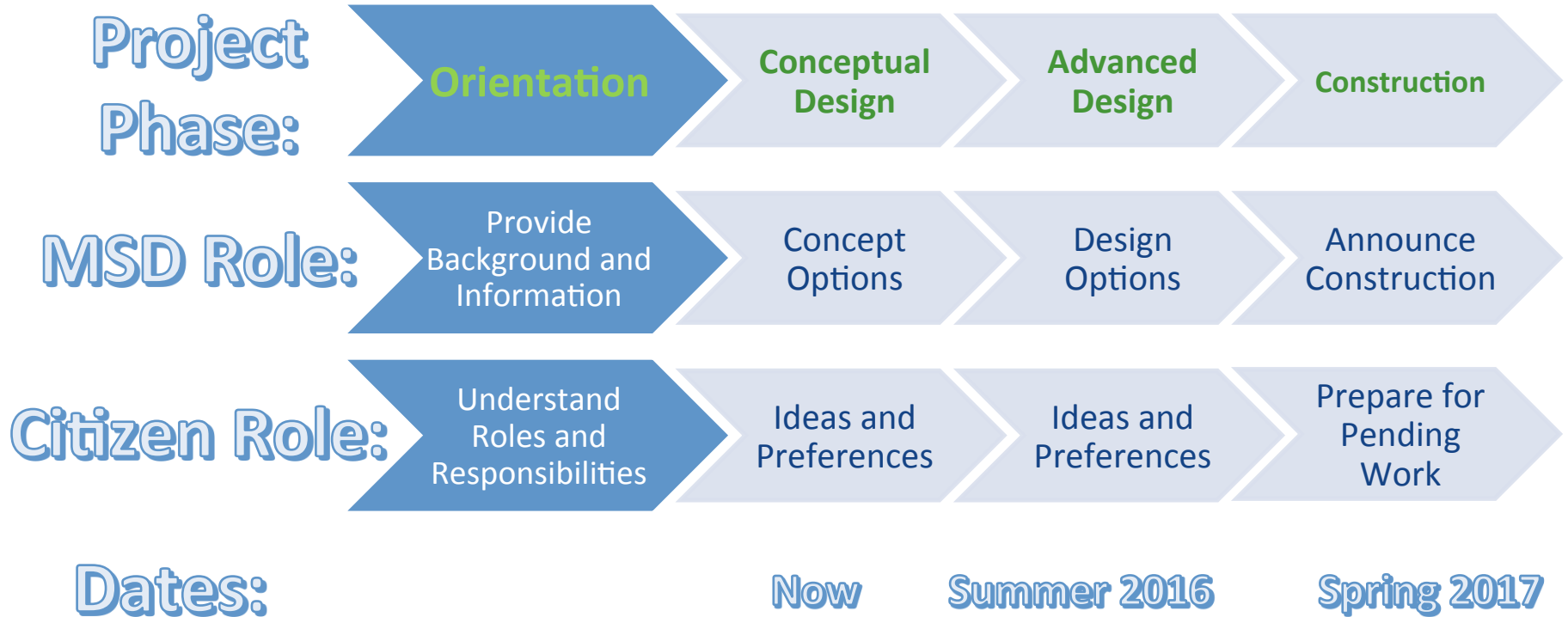
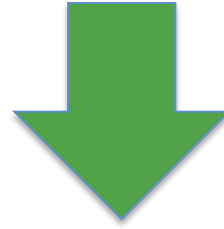
Project Phases and Roles



Project Phases and Roles



Portland CSO Basin Schedule



3. Getting to Know You

Public Engagement Tools: “Clickers” and Online Polling

“Clickers” for Public Meetings

- Simple To Use
- Anonymous (No One Knows Your Answers)
- Simultaneous (We All See the Results At the Same Time)
- Equal Voice for All



Online Polling for Those Who Can't Attend Public Meetings

msdprojectwin.org

PROJECT WIN
with us we get it done
with it it's done
Waterway Improvements Now

Improving Our Community Waterways Together

MSD
Metropolitan Sewer District

Home About Us How You Can Help Projects Library **Public Input**

You are here: Home

search keywords go

MSD In Your Area

Rainwater can enter the sewer system during rain events and cause a mixture of sewage and rainwater to flow untreated into our waterways. MSD is using storage basins and green infrastructure to control and decrease the amount of rainwater entering the system, thus reducing overflows into our waterways. Click "Read More" to find out about projects near you.

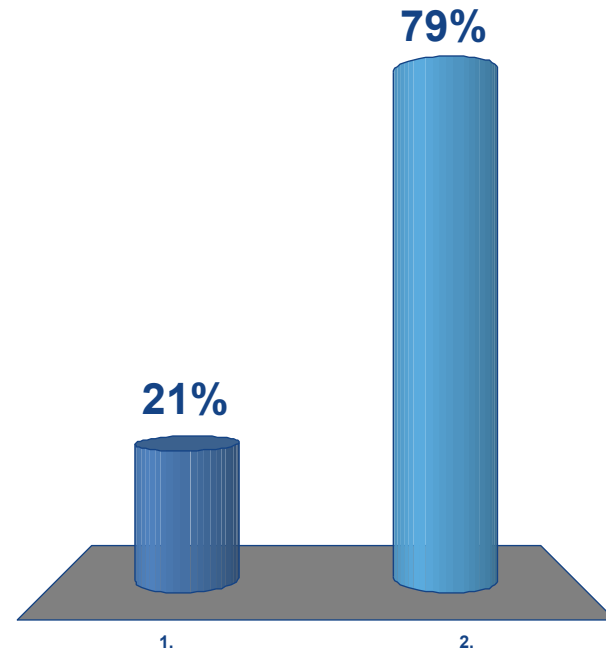
Read More

COLLABORATING PROJECTS

Storage Basin
Green Solution
Eliminated Basin
Overflow Location

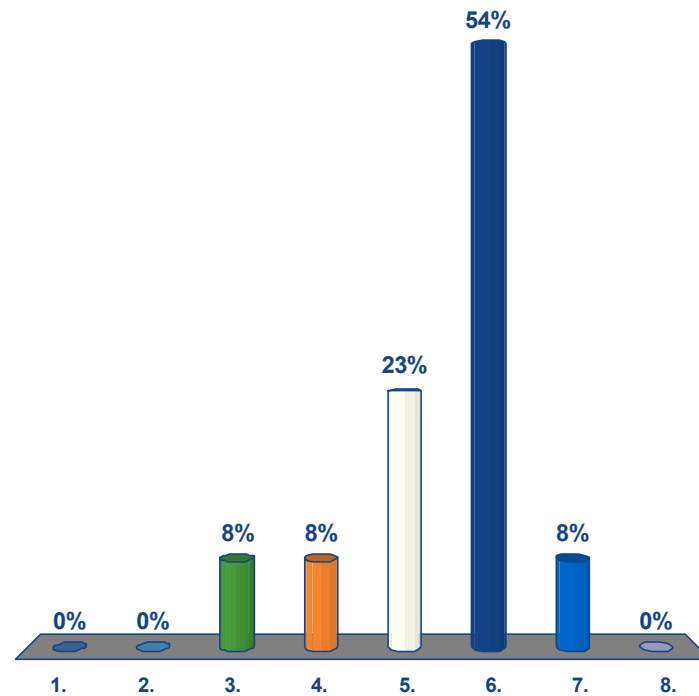
Who Will Win Super Bowl 50?

1. Denver Broncos
2. Carolina Panthers



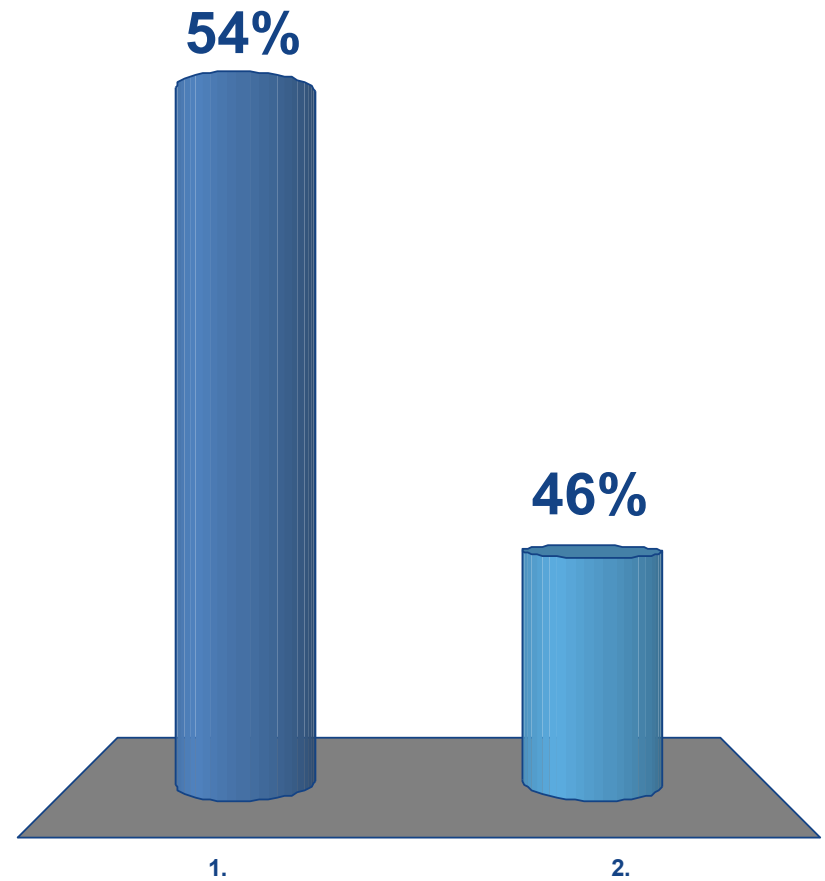
How Young Are You?

1. 0-19
2. 20-29
3. 30-39
4. 40-49
5. 50-59
6. 60-69
7. 70-79
8. 80+



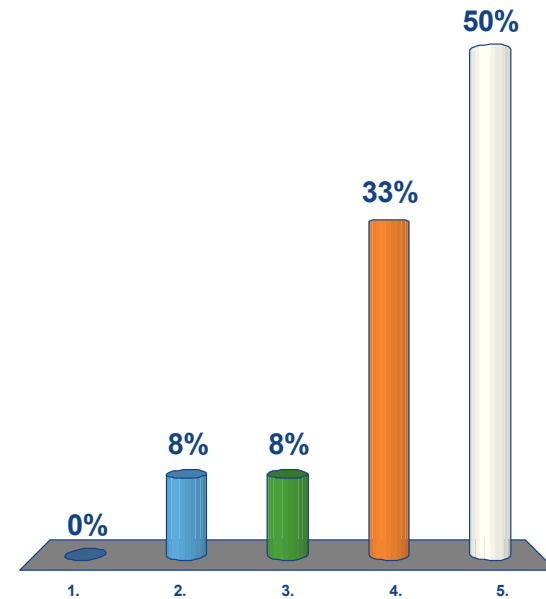
Gender?

1. Male
2. Female



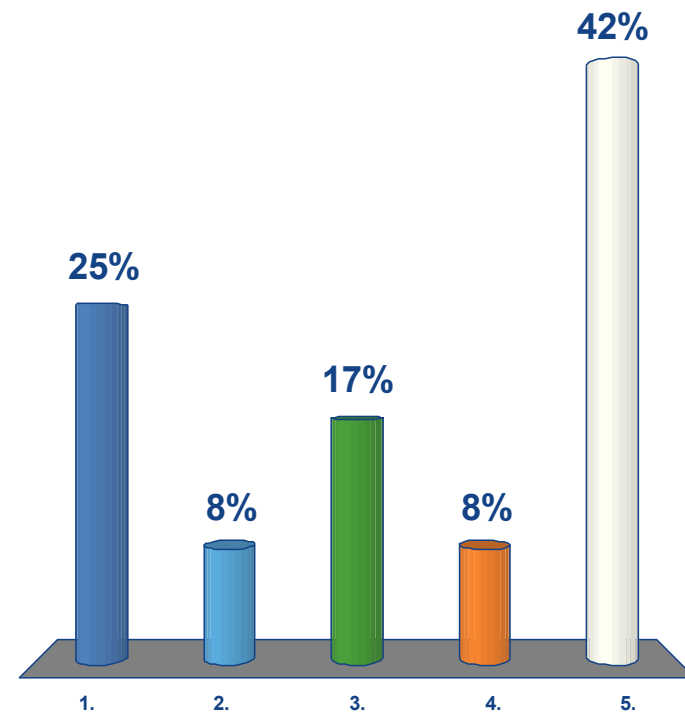
How long have you lived in the Portland Community?

1. Less than 5 Years
2. 5-9 Years
3. 10-19 Years
4. 20+ Years
5. Live Outside Portland



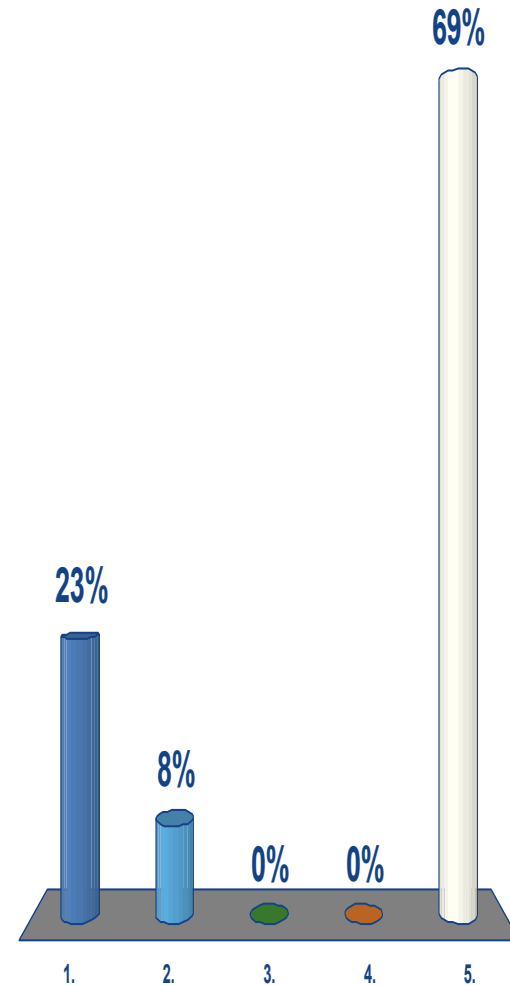
Where Do You Live?

1. Area 1
2. Area 2
3. Area 3
4. Area 4
5. Other

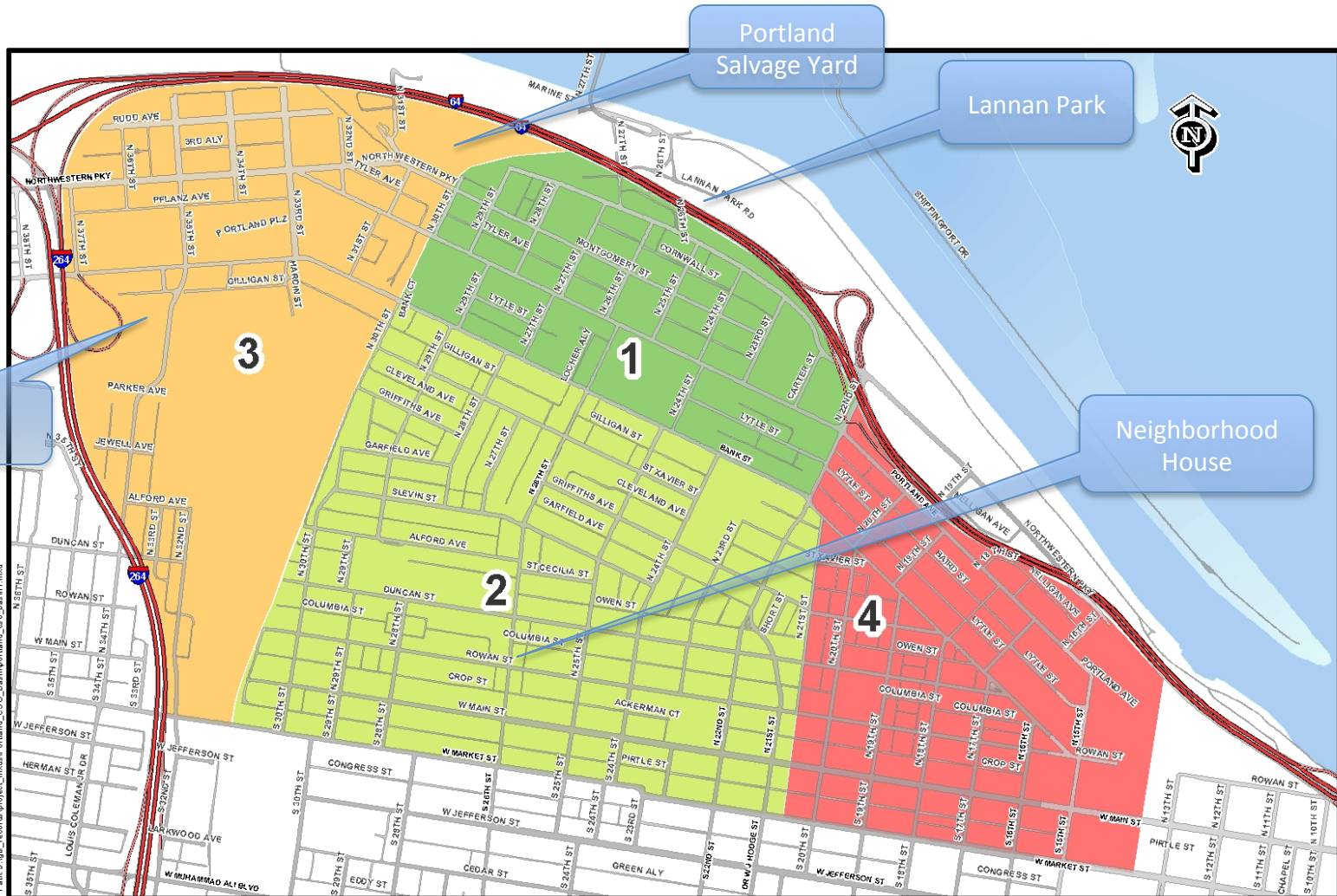


Where Do You Operate a Business?

1. Area 1
2. Area 2
3. Area 3
4. Area 4
5. Don't Operate a Business

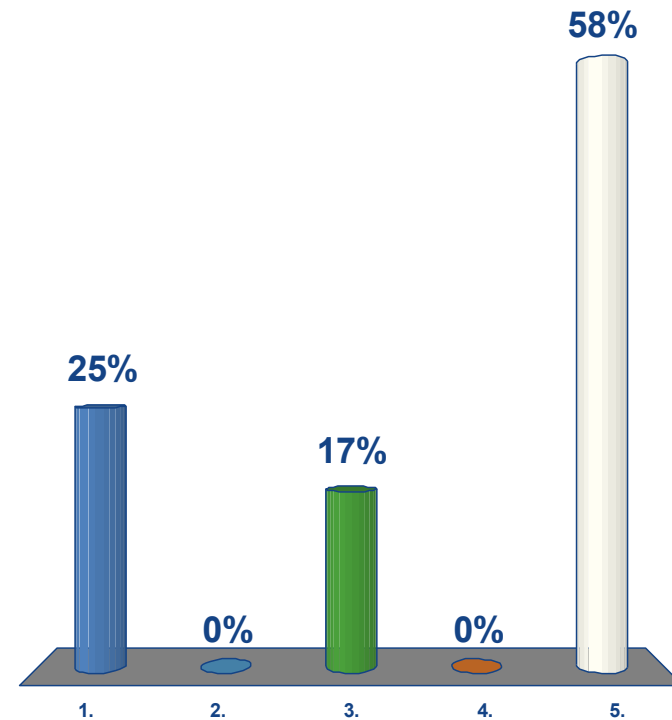


Where Do You Spend Your Days? (i.e. work, school, volunteer)



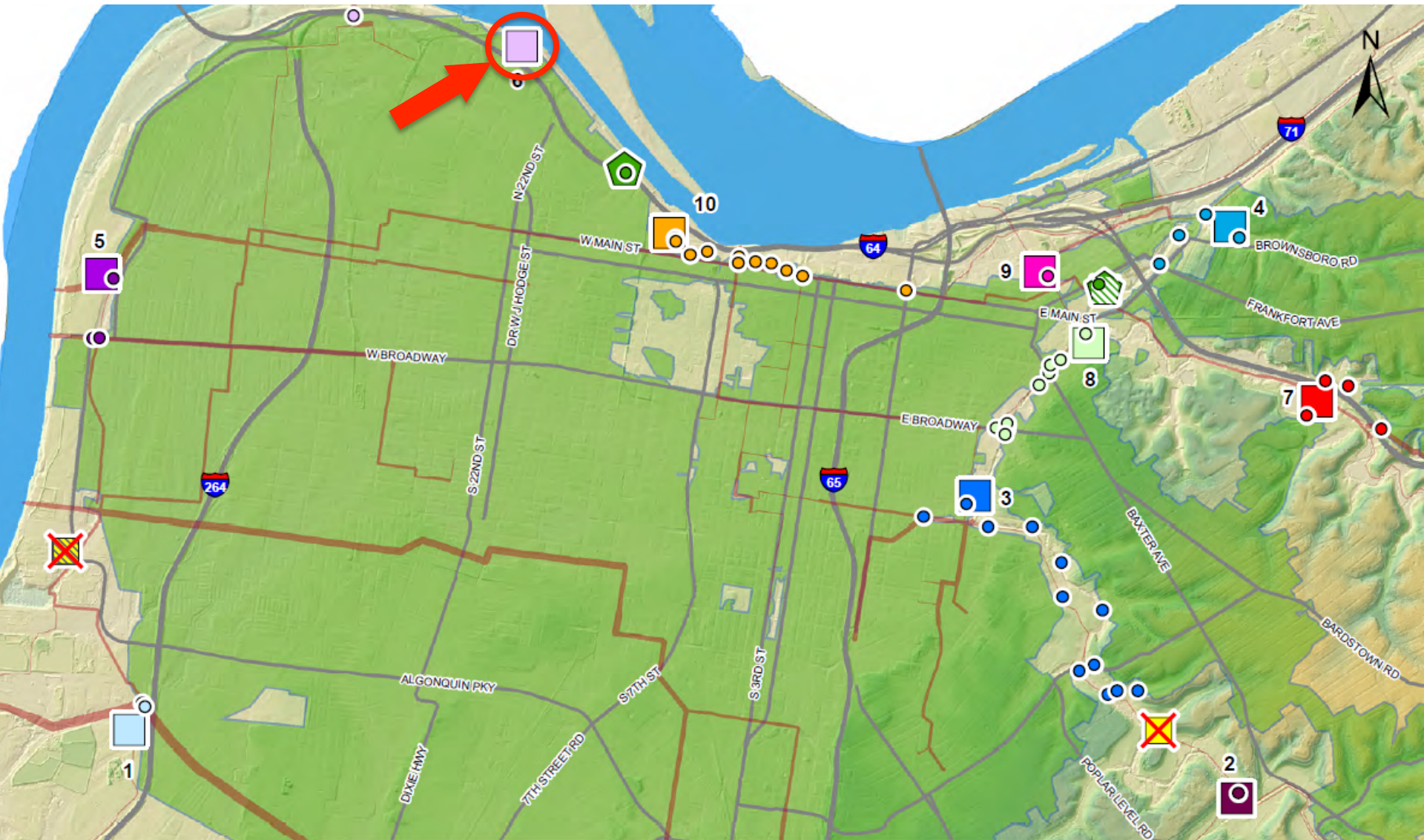
Where Do You Spend Your Days? (i.e. work, school, volunteer)

1. Area 1
2. Area 2
3. Area 3
4. Area 4
5. Other



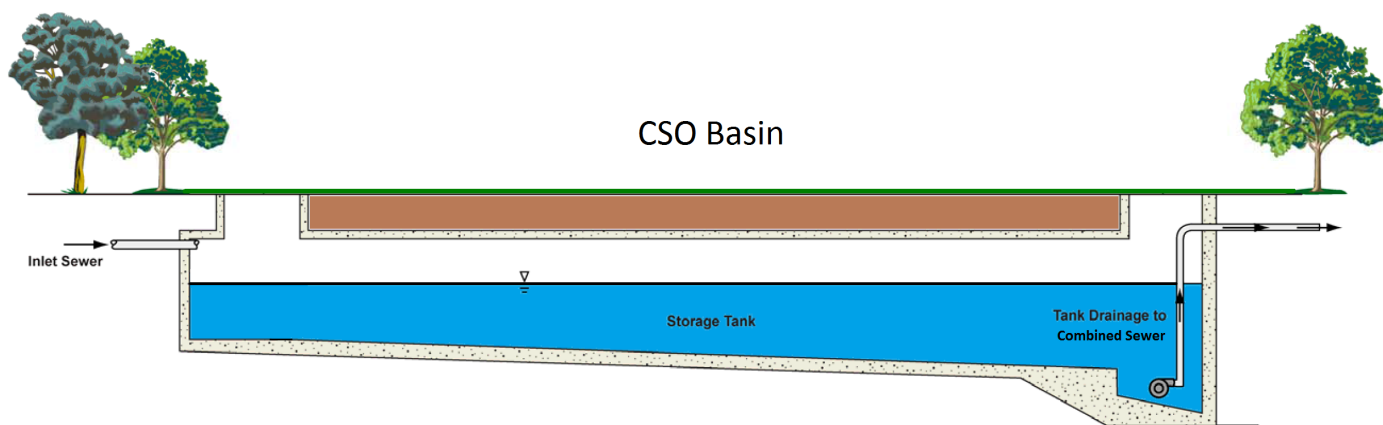
4. Introduction to the Portland CSO Basin Project

CSO Basins per Consent Decree



What is a CSO Basin?

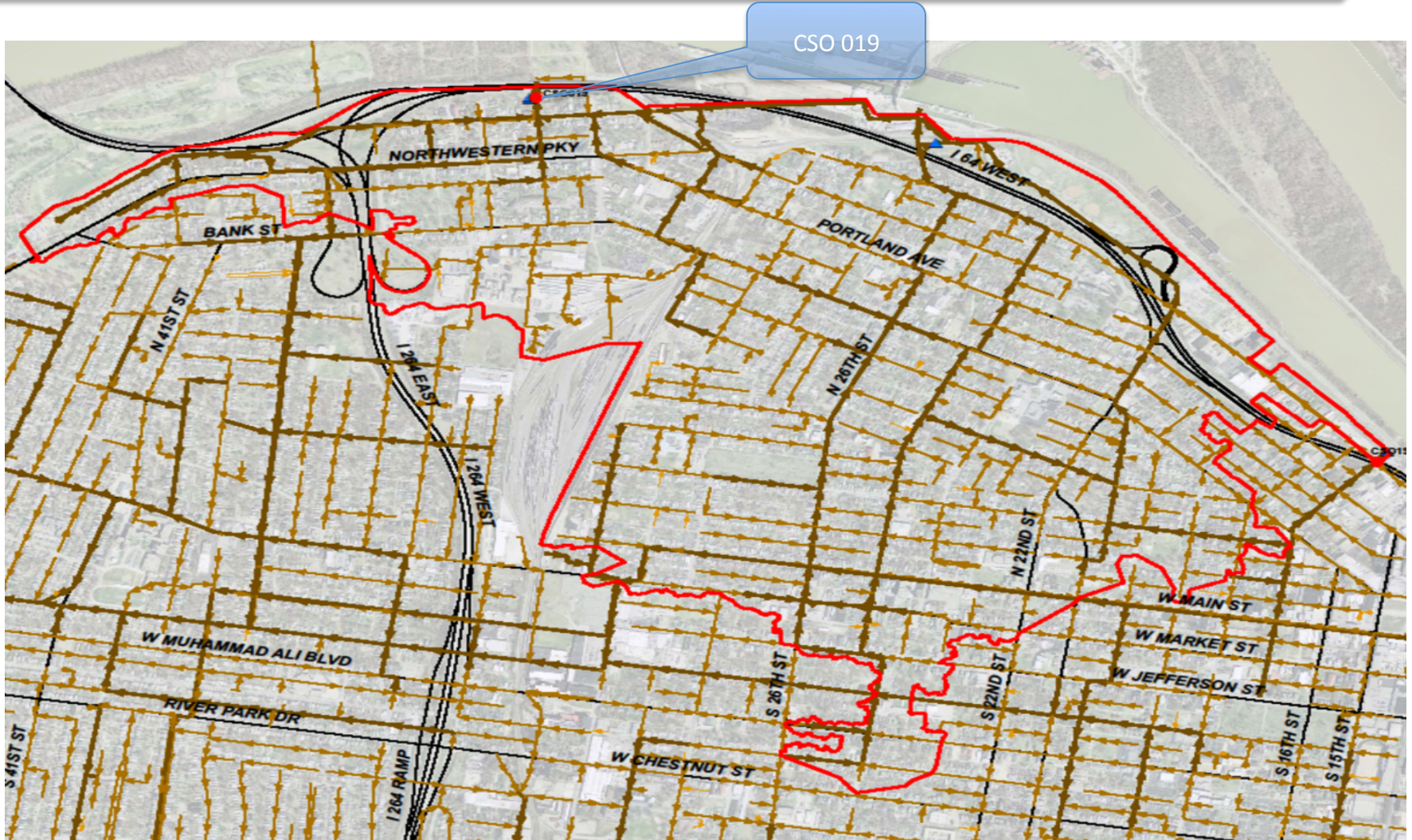
- CSO Basin provides temporary storage for wet weather overflows that would otherwise flow directly to creeks, streams, and rivers
- Released back into the collection system for treatment when system capacity is available



Portland CSO Basin

- CSO 019 Drainage Area
 - 850 Acres
 - 61 Overflows per Typical Year
 - 167 Millions Gallons per Typical Year
- CSO Basin
 - 6.7 Million Gallons of Storage Capacity
 - 19 Million Gallons per Day Pump Station
 - Underground and covered
 - 8 Overflows per Typical Year (reduced from 61)
 - 86% Reduction in overflow occurrences

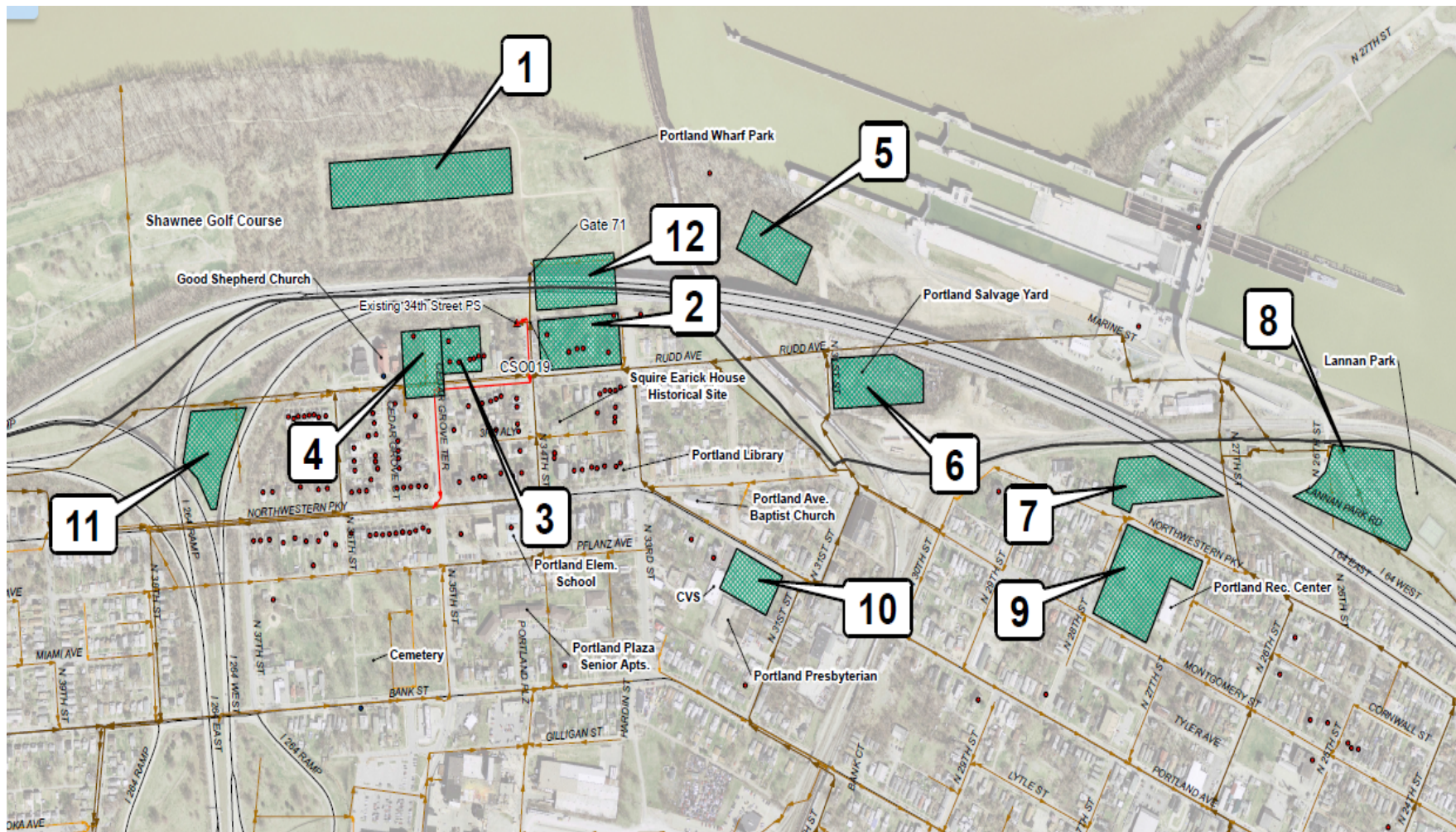
CSO 019 Drainage Area



Portland CSO Basin

- General Site Requirements
 - Hydraulically connected to CSO 019
 - Large enough to accommodate basin layout
- 12 Potential Basin Locations Identified

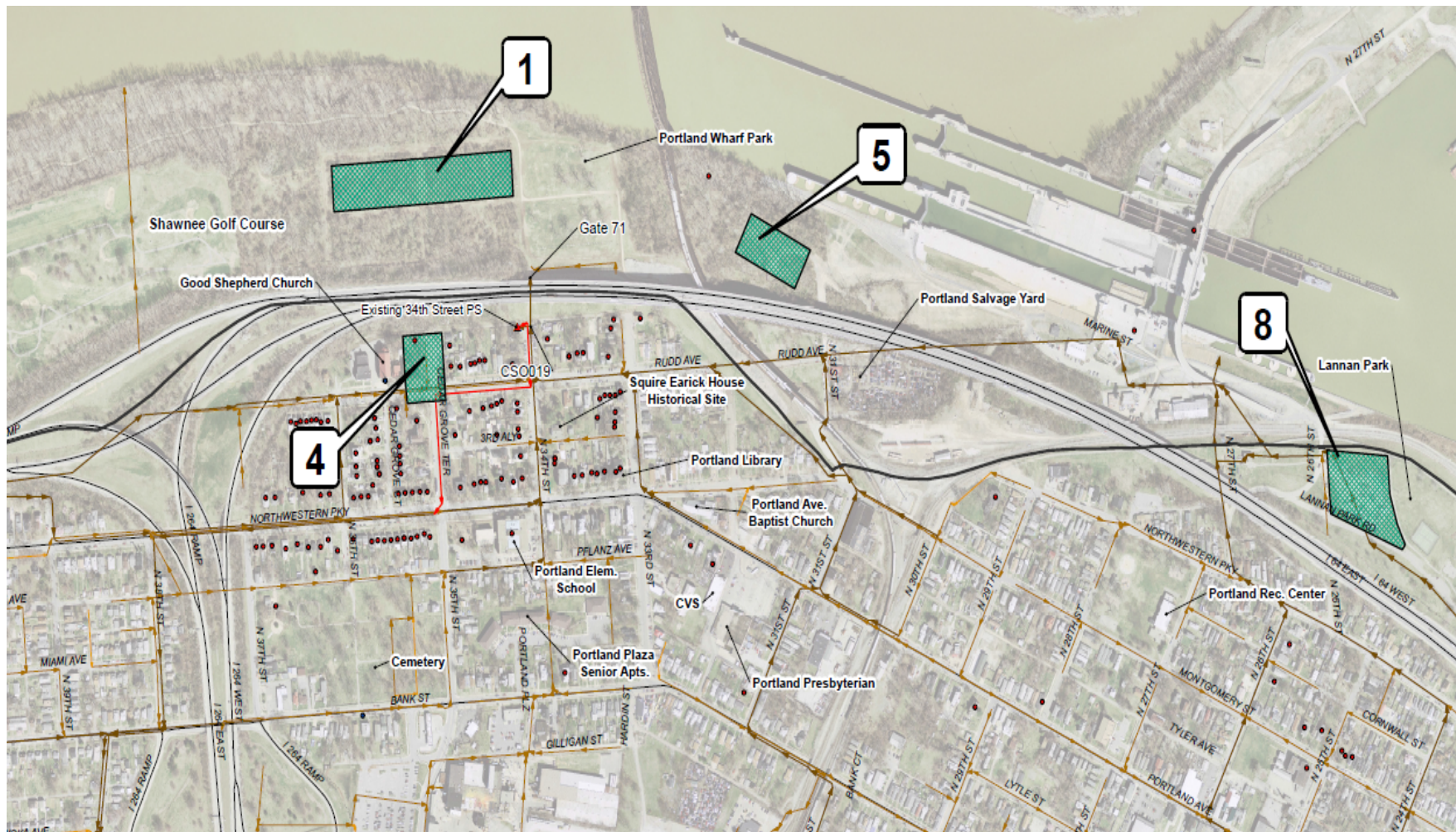
Portland CSO Basin – 12 Potential Sites



Portland CSO Basin

- Preliminary Selection Criteria
 - Private Property Acquisition
 - Historical / Archeological Impacts
 - Ecological / Environmental Impacts
 - Traffic Disruption
 - Permitting Constraints
- 12 Potential Basin Locations Reduced to 4

Portland CSO Basin – 4 Potential Sites



Portland CSO Basin

- Detailed Selection Criteria
 - Geotechnical Investigation
 - Historical / Archeological Investigation
 - Ecological / Environmental Investigation
 - Private Property Acquisition
 - Permitting Constraints
 - Ohio River Floodplain
- 4 Potential Basin Locations Reduced to 1

Portland CSO Basin – Selected Site



Portland CSO Basin

- Lannan Park
 - Separated from Residential Properties by I-64
 - No Private Property Acquisition Required
 - No Utility Relocation Required
 - No Major Traffic Disruption
 - Outside of Ohio River Floodplain

Portland CSO Basin Project Area



Portland CSO Basin Project Area



Portland CSO Basin Project Area



Example of a Basin Restoration



Example of a Basin Restoration



Frequently asked questions

- Will it create potential for back-ups?
 - No, the high water elevation will be below basement elevations
 - Also will not eliminate the potential of back-ups
- What happens when the basin is full?
 - The system will function as it does today with the overflows being discharged to the Ohio River
- Will this project reduce flooding?
 - The basin will increase capacity of the combined sewer system during wet weather events
- Will the basin be visible?
 - No; underground, covered facility
 - There will be a control building and a screened generator
 - Access points/hatches may be visible

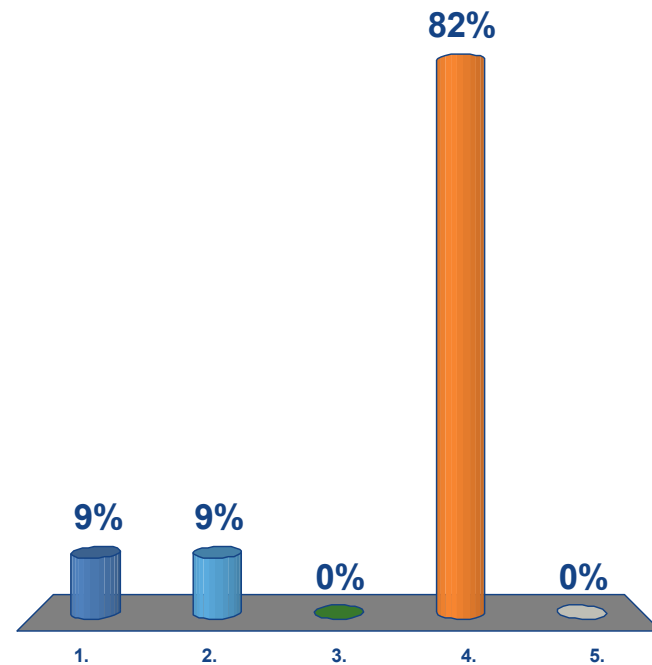
Frequently asked questions (continued)

- What about odor?
 - Highly diluted flow (mostly storm water)
 - Basin is underground and covered
 - Basin will be equipped with flushing equipment
 - Typically, odor control not necessary with these types of facilities
 - MSD is being pro-active
 - Performing odor control monitoring/testing
 - Basin will be designed to accommodate a future odor control system

5. Park Usage

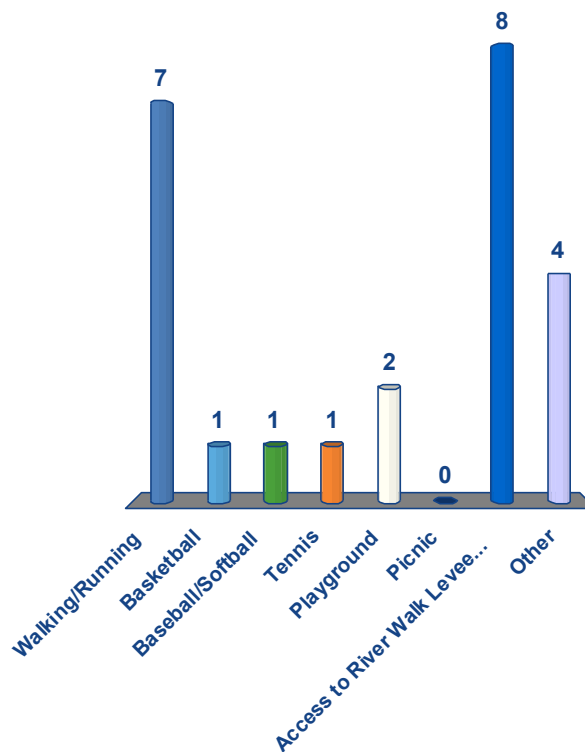
How often do you use the park?

1. Daily
2. Weekly
3. Monthly
4. Seasonally
5. Never



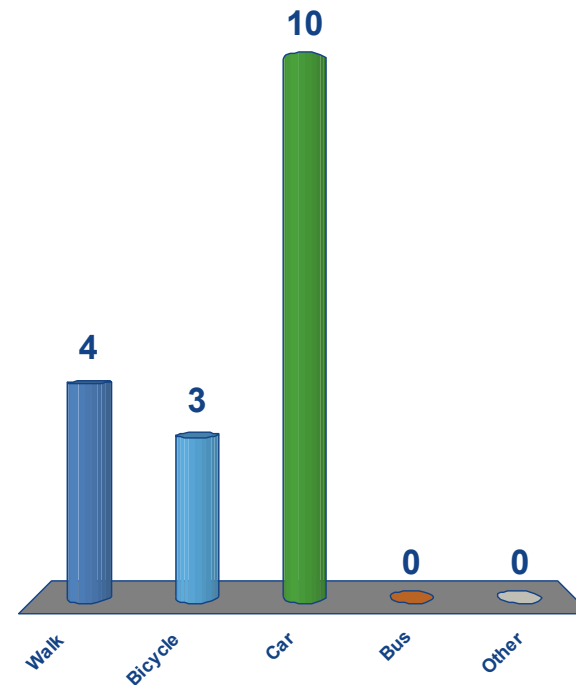
How do you use the park? (up to 3)

1. Walking/Running
2. Basketball
3. Baseball/Softball
4. Tennis
5. Playground
6. Picnic
7. Access to River Walk Levee Trail
8. Other



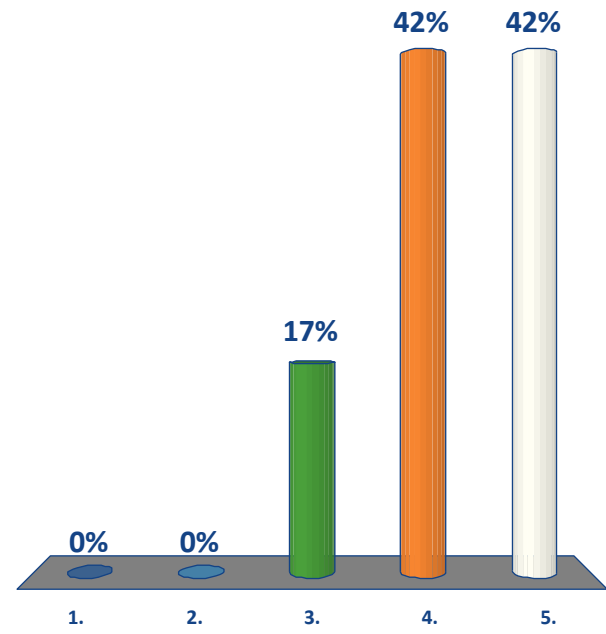
How do you get to the park? (up to 2)

1. Walk
2. Bicycle
3. Car
4. Bus
5. Other



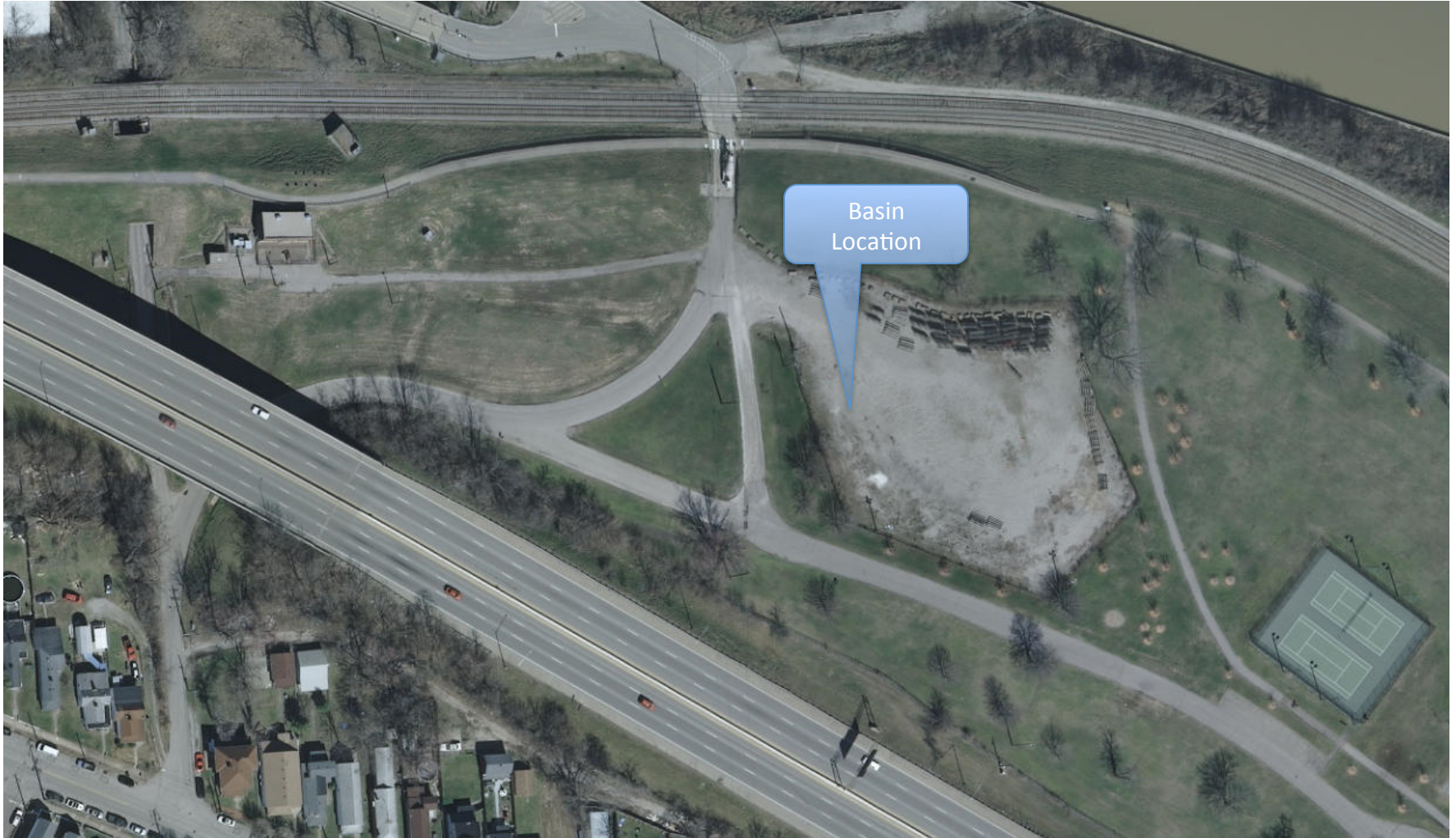
How important is it to leave park open during construction?

1. Not at all
2. Slightly
3. Moderately
4. Very
5. Extremely



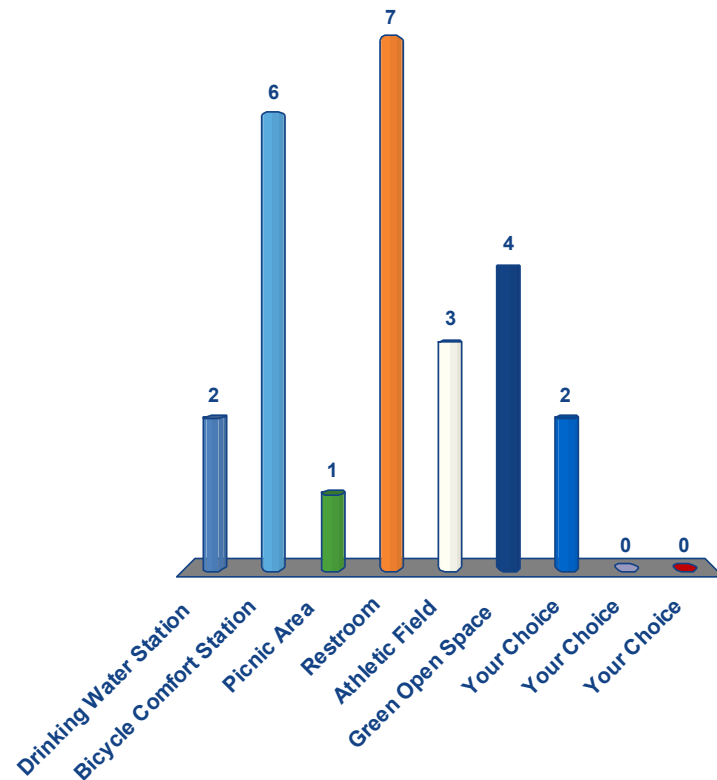
Mean = 4.25

Portland CSO Basin Project Area



What improvements would you like to see on this portion of park? (up to 3)

1. Drinking Water Station
2. Bicycle Comfort Station
3. Picnic Area
4. Restroom
5. Athletic Field
6. Green Open Space
7. Your Choice
8. Your Choice
9. Your Choice



6. Next steps

Next Steps

- Advanced Project Design Feb. 2016 – Oct. 2016
- Future public outreach:
 - Advanced Design Public Input Meeting Summer 2016
 - Pardon our Dust Meeting Spring 2017
- Construction Start Spring 2017
- Construction Completion Spring 2019
- **Consent Decree Deadline December 31, 2019**

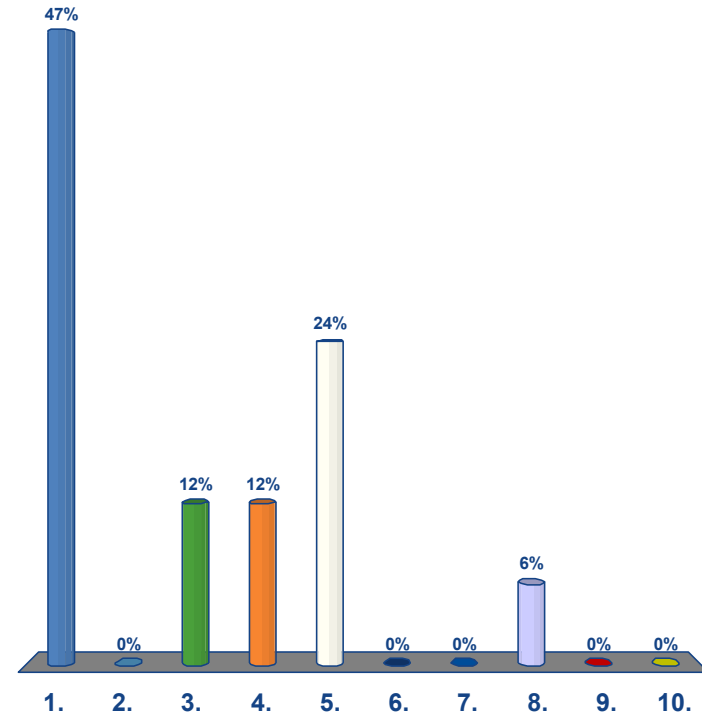
For more information and to give input for this project please attend our Advanced Design Meeting in the Summer of 2016.



7. Feedback

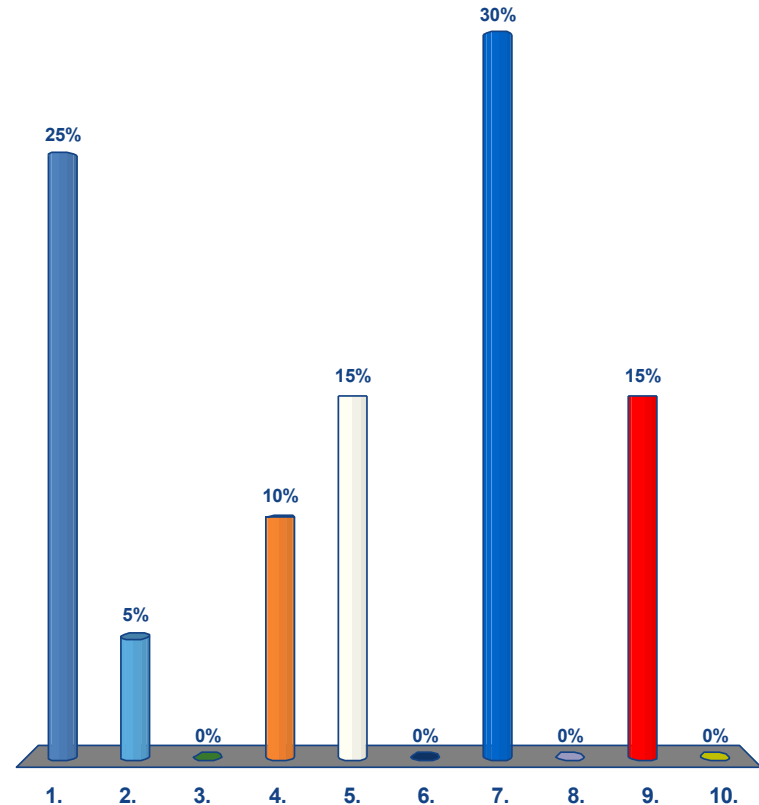
How Did You Hear About this Meeting? (Up to 3)

1. Received a Post Card
2. Courier Journal
3. Metro Council District Newsletter
4. Neighborhood Association
5. Word of Mouth
6. Flyer
7. Project WIN website
8. MSD email
9. @LouisvilleMSD (Twitter)
10. Other



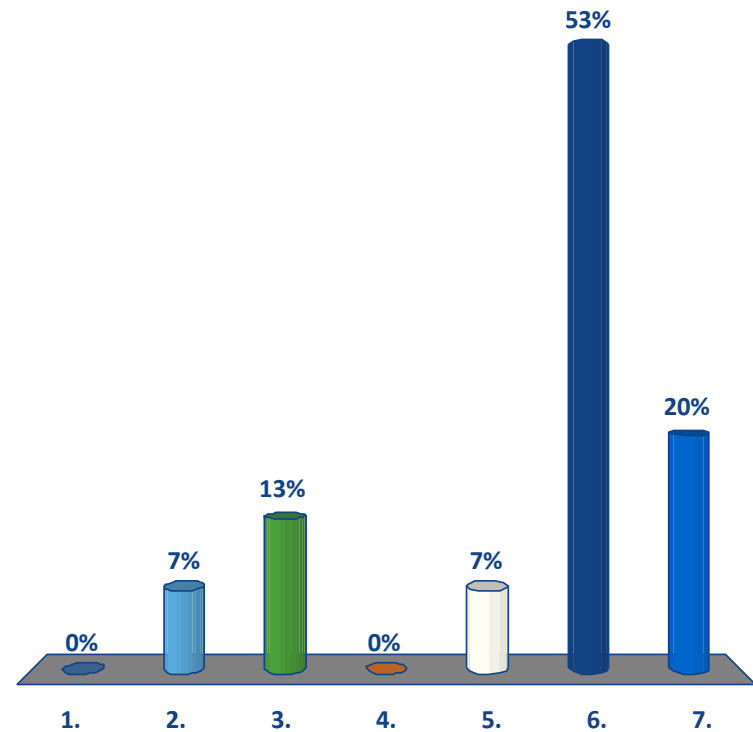
How Would You Like to Learn About MSD's Projects? (Up to 3)

1. Public Meetings
2. Metro TV Videos
3. Local Mainstream Print or Broadcast Media
4. Metro Council District Newsletter
5. Neighborhood Association
6. Project WIN website
7. MSD email
8. @LouisvilleMSD (Twitter)
9. Bill Inserts
10. MSD Streamline Newsletter



How satisfied are you with this feedback method?

1. Very Unsatisfied
2. Unsatisfied
3. Somewhat Unsatisfied
4. Neutral
5. Somewhat Satisfied
6. Satisfied
7. Very Satisfied



Mean = 5.47

For *general information or emergencies* regarding the MSD system, call:

502-587-0603

Your Call Will be Answered

- By an MSD Staff Member
- Around the Clock
- Every Day of the Year



Find Out More

msdprojectwin.org



Improving Our Community Waterways Together



Home About Us How You Can Help Projects Library **Public Input**

You are here: Home

search keywords go

MSD In Your Area

Rainwater can enter the sewer system during rain events and cause a mixture of sewage and rainwater to flow untreated into our waterways. MSD is using storage basins and green infrastructure to control and decrease the amount of rainwater entering the system, thus reducing overflows into our waterways. Click "Read More" to find out about projects near you.

Read More



Please Tell Your Friends and Neighbors to Take the Survey Online!



THANK YOU FOR YOUR
PARTICIPATION!

