

A photograph of a small, tan-colored building, likely a pump station, surrounded by a chain-link fence. The building has a white door and a small window. To the left of the building is a concrete structure with a metal railing. The background is filled with green trees and a utility pole. A person in a red shirt is visible near the fence. The text is overlaid in yellow on the bottom half of the image.

**Nightingale Pump Station
Replacement and Off-line Storage
IOAP Public Input Meeting
August 14th, 2012**

Overview

- Communicate
 - Existing Conditions
 - The Original Plan
 - The Proposed Changes
 - The Path Forward
- Provide Input Opportunity During Planning



Existing Conditions

Nightingale Pump Station

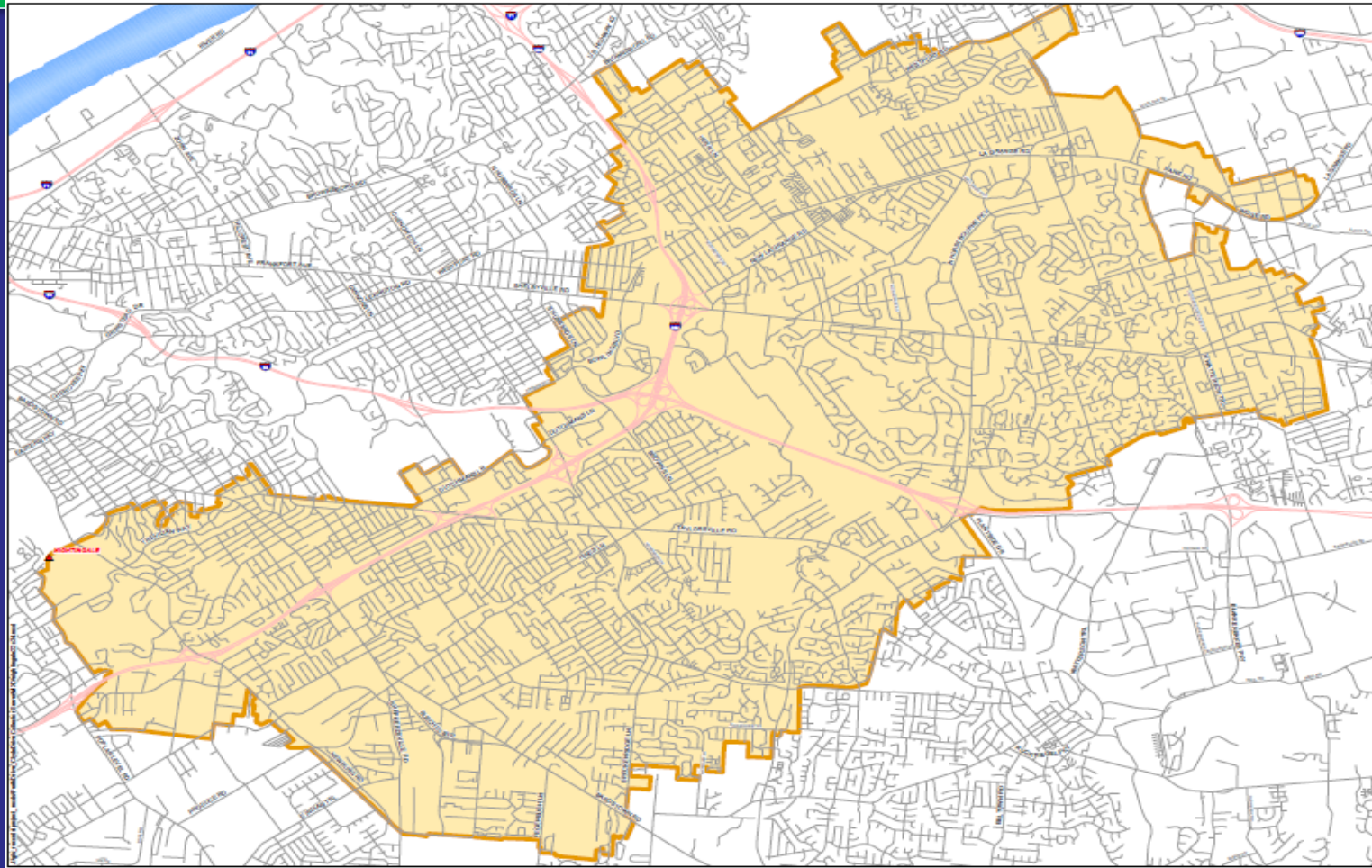


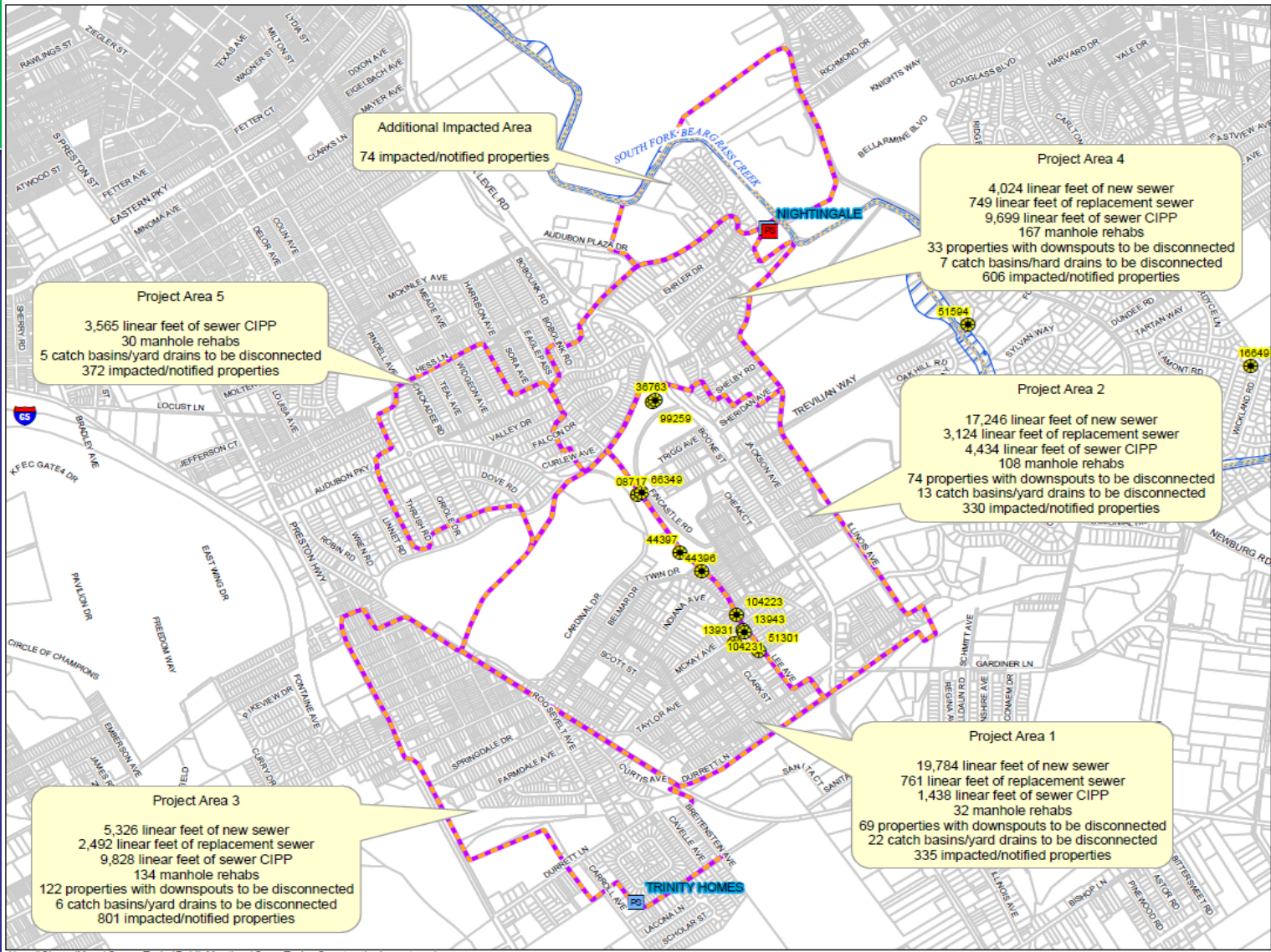
Nightingale Pump Station

- 27 MGD
- 23,972 Acre Service Area
- Diverts Beargrass Interceptor (BGI) & Beargrass Interceptor Relief (BGIR)
- Serves Camp Taylor and Surrounding Neighborhoods
- Interceptor Relief, CSO's 18



Nightingale Service Area





Nightingale Site



CSO 018

Pump Station

The Original Plan

Nightingale Pump Station Replacement and New Force Main



2009 IOAP Recommendations

- Nightingale Pump Station Project
 - Scope
 - 60 MDG (27 MGD Existing)
 - 5780 LF New 42” Force Main
 - \$15,710,000
 - Location
 - Vacant Property Adjacent to Existing Site
 - Completion Date
 - December 16, 2016

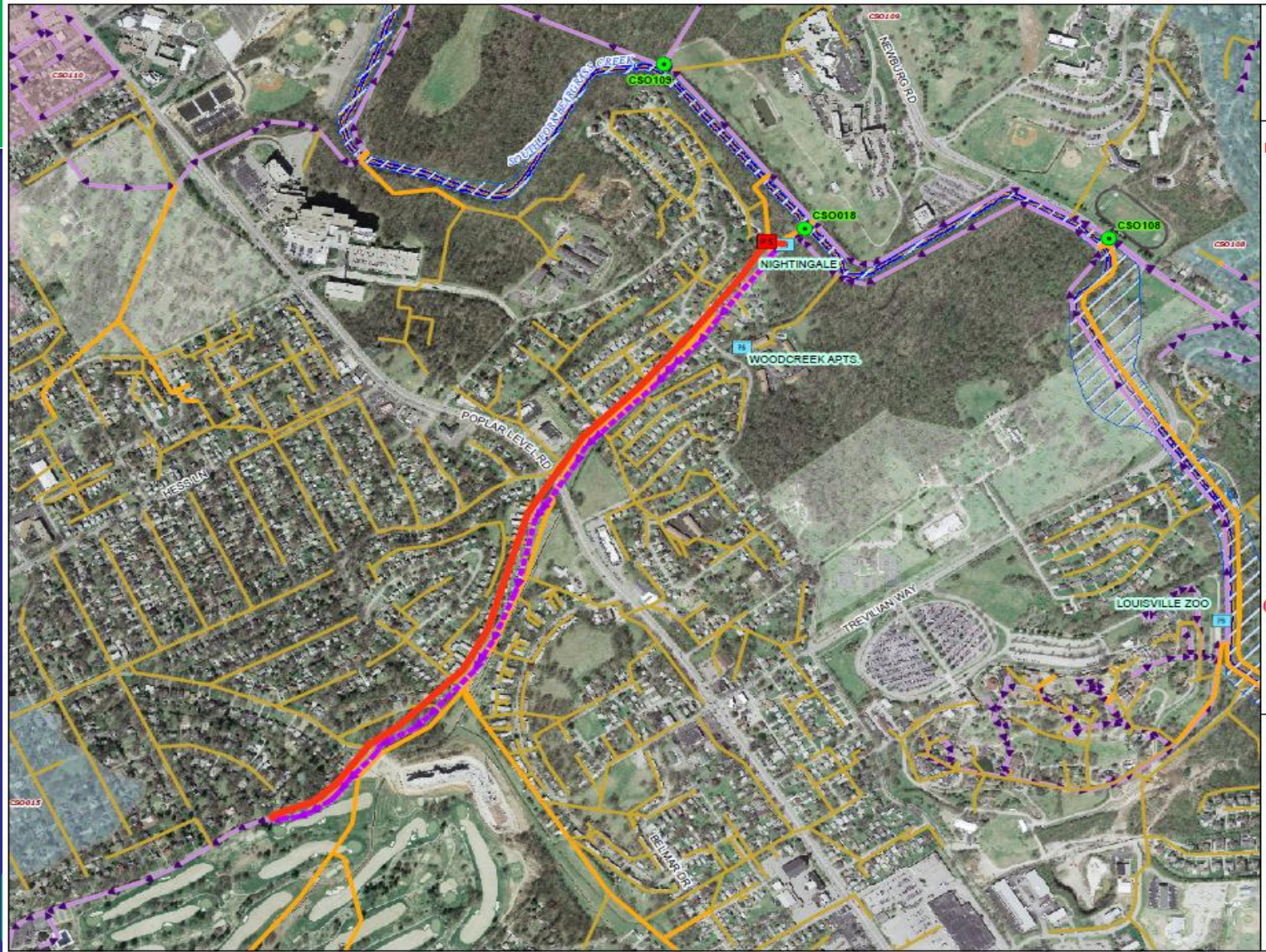


2009 IOAP Recommendations

CS O	CSO Area (ac.)	2009 AAOV (MG/yr)	# Overflows per year	Post LTCP AAOV (MG/yr)	Post LTCP # Overflows per year
18	0.00	18.69	13	0	0

AAOV: Average Annual Overflow Volume





The Proposed Changes



Revised Recommendations

Nightingale Pump Station Project

Scope

33 MDG

2.7 MG Off-line Storage

\$16,540,000

Location

Vacant Property Adjacent to Existing Site

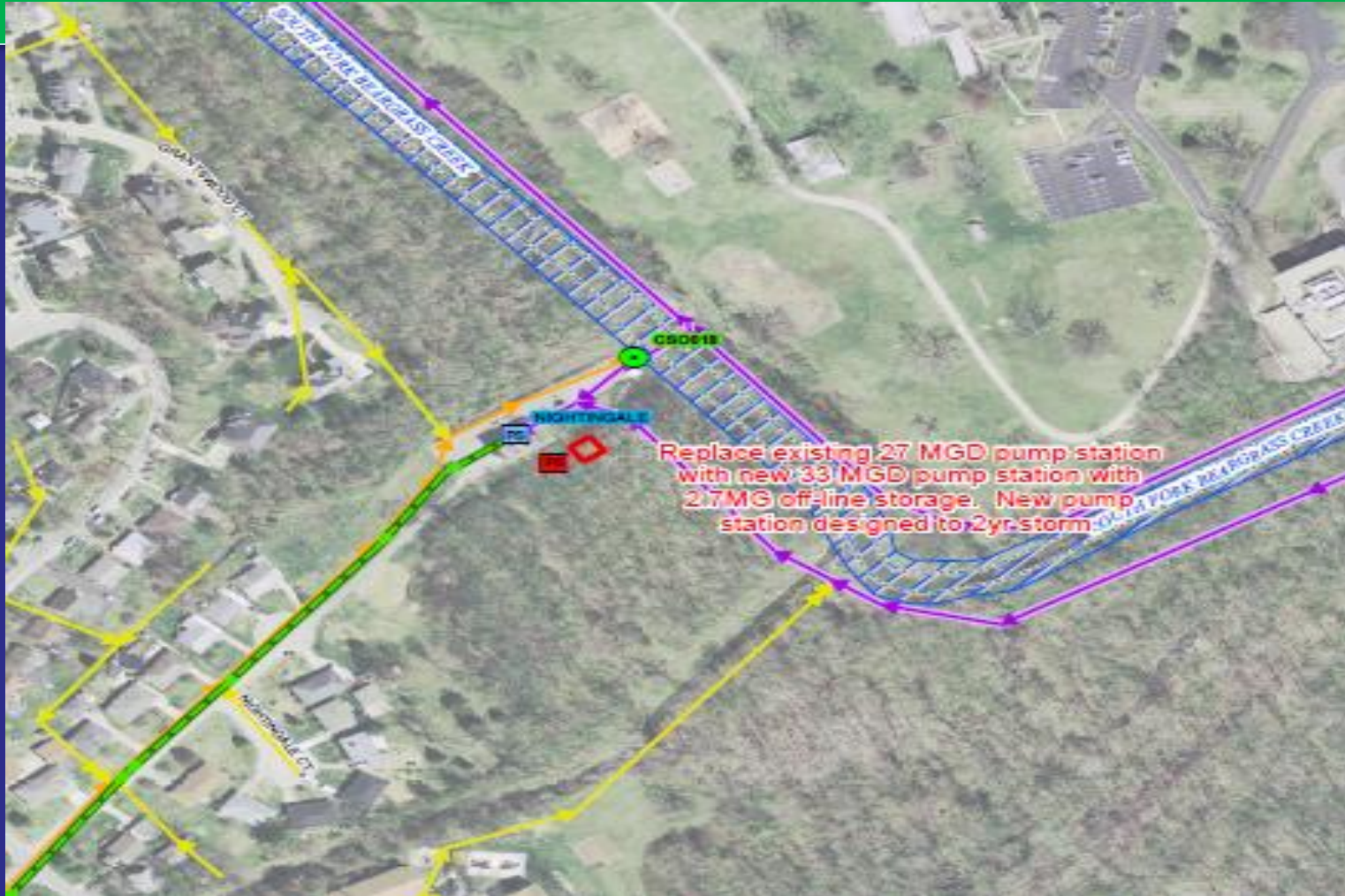
Completion Date

December 15, 2015

Storage Basin Facts

- No Down Stream Improvements
- Centralized Overflow Control & Maintenance
- Minimal Neighborhood Disturbance
“We’re Already There”
- Limited Public Visibility
- Known and Predictable Performance

Nightingale PS Project



Pump Station Building Examples



Pump Station Building Examples



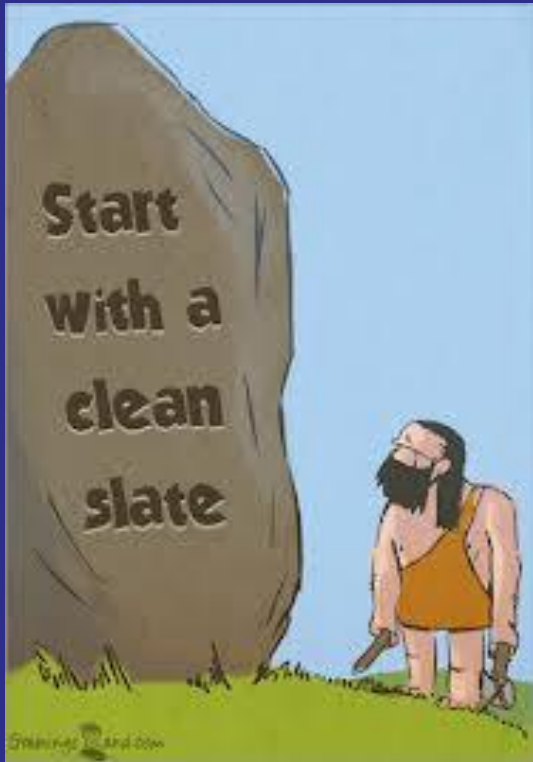
Moving Forward



Moving Forward

- Continue discussions with EPA regarding proposed project modification
 - 33 MGD Pump Station
 - Off-line Storage Solution (No Force Main)
 - 12/31/15 IOAP Date
- MSD Begin Design/Construction Phases
 - Design 2012/2013
 - Construction 2014
 - Completion by 2015

Moving Forward



- Public involvement – Today
 - Communicate Concepts
 - Solicit Feedback/Suggestions (Site Layout, Building Aesthetics, etc..)
- Public Involvement – Next Phase
 - Communicate Design Concepts and Architectural Renderings
 - Solicit Feedback & Suggestions

Public Input Sought

- Provide written comments by September 14, 2012
- Send comments via email
commentsIOAP@msdlouky.org
- Mail comments
MSD IOAP Project Comments
Attention: Project WIN Program Manager
700 West Liberty St.
Louisville, KY 40203

