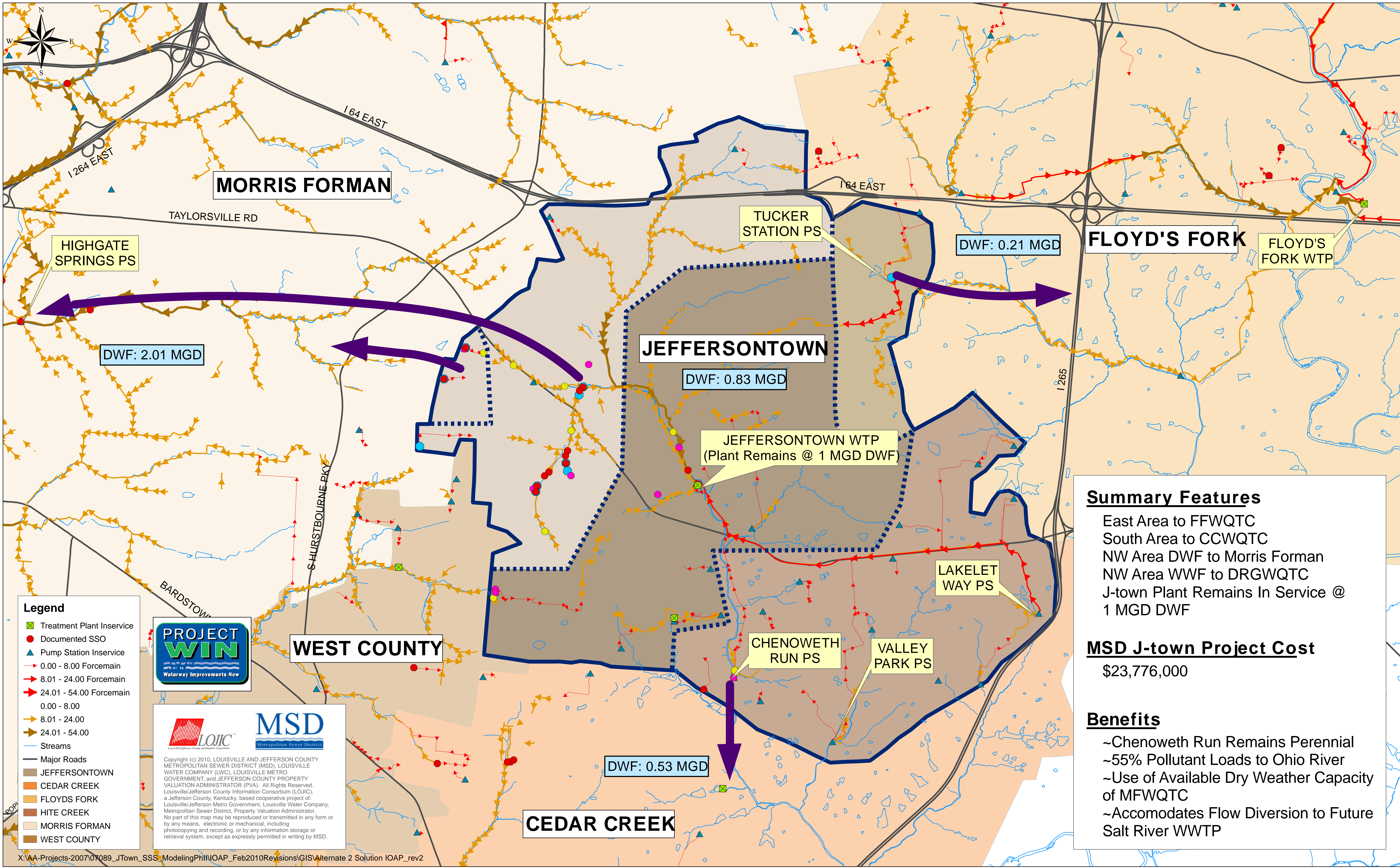


**Figure 6 - Jeffersontown Diversion Projects: Alternate 2 - Grassland to HLI / Gravity and Pumped to Cedar Creek**



**Legend**

- Green square: Treatment Plant Inservice
- Red circle: Documented SSO
- Blue triangle: Pump Station Inservice
- Red arrow: 0.00 - 8.00 Forcemain
- Red arrow: 8.01 - 24.00 Forcemain
- Red arrow: 24.01 - 54.00 Forcemain
- Yellow arrow: 0.00 - 8.00
- Yellow arrow: 8.01 - 24.00
- Yellow arrow: 24.01 - 54.00
- Blue line: Streams
- Grey line: Major Roads
- Light blue: JEFFERSONTOWN
- Light orange: CEDAR CREEK
- Light yellow: FLOYDS FORK
- Light green: HITE CREEK
- Light purple: MORRIS FORMAN
- Light pink: WEST COUNTY



**MSD**  
Metropolitan Sewer District

**LOJIC**  
Louisville/Jefferson County Information Consortium

Copyright (c) 2010, LOUISVILLE AND JEFFERSON COUNTY METROPOLITAN SEWER DISTRICT (MSD), LOUISVILLE WATER COMPANY (LWC), LOUISVILLE METRO GOVERNMENT, and JEFFERSON COUNTY PROPERTY VALUATION ADMINISTRATOR (PVA). All Rights Reserved. Louisville/Jefferson County Information Consortium (LOJIC), a Jefferson County, Kentucky, based cooperative project of Louisville/Jefferson Metro Government, Louisville Water Company, Metropolitan Sewer District, Property Valuation Administrator. No part of this map may be reproduced or transmitted in any form or by any means, electronic or mechanical, including photocopying and recording, or by any information storage or retrieval system, except as expressly permitted in writing by MSD.

**Summary Features**

- East Area to FFWQTC
- South Area to CCWQTC
- NW Area DWF to Morris Forman
- NW Area WWF to DRGWQTC
- J-town Plant Remains In Service @ 1 MGD DWF

**MSD J-town Project Cost**

\$23,776,000

**Benefits**

- ~Chenoweth Run Remains Perennial
- ~55% Pollutant Loads to Ohio River
- ~Use of Available Dry Weather Capacity of MFWQTC
- ~Accommodates Flow Diversion to Future Salt River WWTP