

Clifton Heights CSO Basin Project Advanced Design Meeting

Tuesday, September 15, 2015
American Printing House
for the Blind



Project Background

- Orientation Meeting was held on March 25, 2014
- Conceptual Design Meeting was held on May 19, 2015
 - Consent Decree background
 - How the project will address requirements
 - Gathered your preferences on some basin configurations
- We're Back to Talk With You About Again
 - Gather your input before we finalize the design
- Take Any Other Questions by Using Comment Cards



Find Out More at msdprojectwin.org

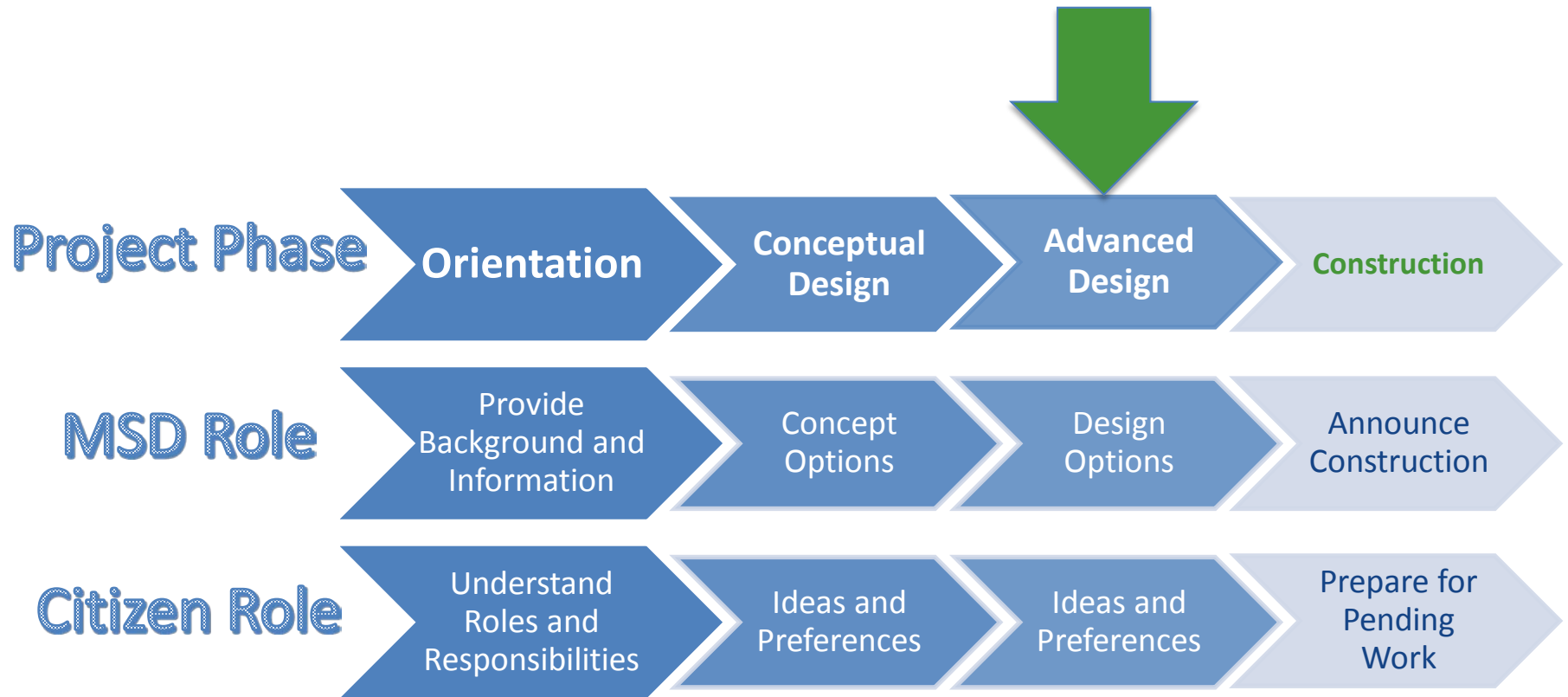
The screenshot shows the MSD Project Win website. At the top left is the 'PROJECT WIN Waterway Improvements Now' logo. The main navigation bar includes 'Home', 'About Us', 'How You Can Help', 'Projects', 'Library', and 'Public Input' (which is circled in red). The MSD logo is on the top right. Below the navigation is a search bar with the text 'search keywords' and a 'go' button. The main content area features a section titled 'MSD In Your Area' with a paragraph of text explaining rainwater runoff and a 'Read More' button. To the right of the text is a map of Clifton Heights with a legend for Storage Basin (red square), Green Solution (green circle), Eliminated Basin (yellow square), and Overflow Location (blue circle). Below the main content is a 'COLLABORATING PROJECTS' section with a row of eight small images showing various construction and infrastructure projects.

Please Tell Your Friends and Neighbors to Take the Survey Online at:

<http://tinyurl.com/MSDCliftonHeights3>



Phase 3: Advanced Design



Advanced Design Meeting Agenda

1. Consent Decree Background
2. Getting to Know You: Demographic and Clifton and Clifton Heights Area Use Questions
3. Update on Clifton Heights Design Process
 - Results from the Conceptual Design Meeting
4. Present Design Options to You
5. Gather Your Ideas & Preferences on Design Options
6. Collect Comments from You (Cards Provided)

Advanced Design Meeting Agenda

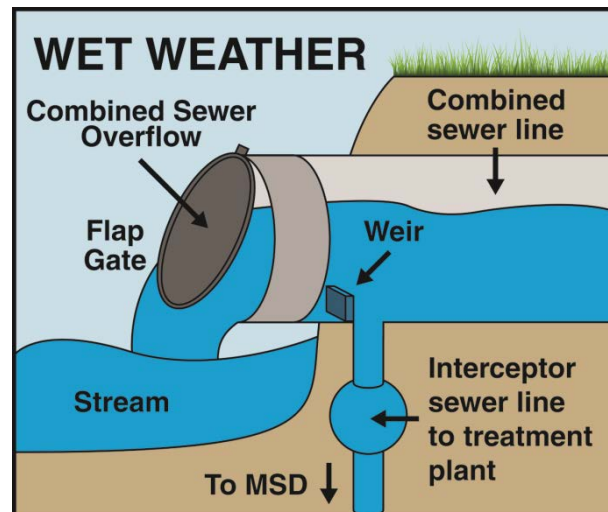
- 1. Consent Decree Background**
2. Getting to Know You: Demographic and Clifton and Clifton Heights Area Use Questions
3. Update on Clifton Heights Design Process
 - Results from the Conceptual Design Meeting
4. Present Design Options to You
5. Gather Your Ideas & Preferences on Design Options
6. Collect Comments from You (Cards Provided)



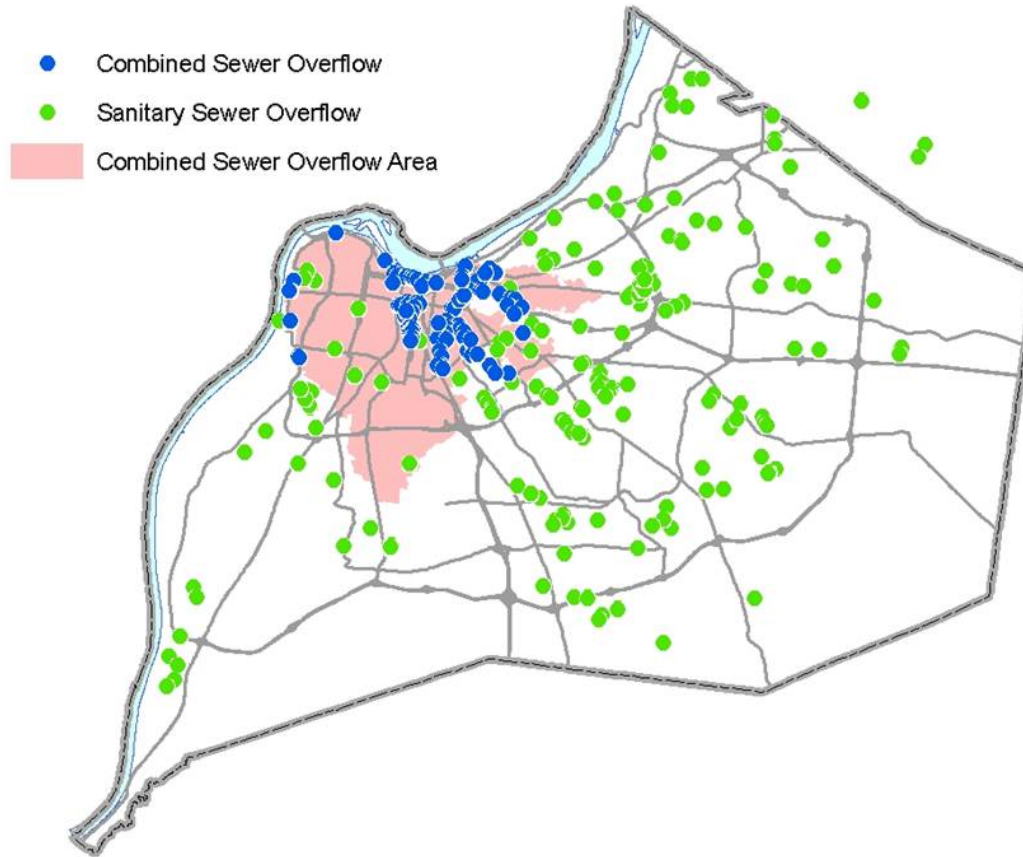


What is a Combined Sewer Overflow?

- What is a combined sewer?
 - Both stormwater and wastewater conveyed in the same pipe.
- What is a Combined Sewer Overflow (CSO)?
 - Untreated combined sewage discharged into a water body (creek, stream, river, etc.)



Current Overflow Sites in Louisville Metro Area



Public Health and Safety Mandate

2005	Federal EPA & State of Kentucky mandate overflow abatement
2008	MSD submitted \$850 million plan to satisfy the mandate
2009	Federal EPA & the State of Kentucky approve the plan
2020	Combined Sewer Overflow Program complete
2024	Separate Sewer Overflow Program complete





MSD Overflow Projects Across Louisville

IOAP Storage

-  I-64 and Grinstead Dr Storage Basin
-  13th St and Rowan St Storage Basin
-  Lexington Rd and Payne St Storage Basin
-  Bells Ln Storage Basin
-  Clifton Heights Storage Basin
-  Logan St and Breckinridge St Storage Basin
-  Portland Wharf Storage Basin
-  Southwestern Pkwy Storage Basin
-  Story Ave and Main St Storage Basin
-  Nightingale PS Replacement and Storage Basin

Green Infrastructure Projects

-  Story Ave and Spring St Green Infrastructure
-  18th St and Northwestern Pkwy Green Infrastructure



Advanced Design Meeting Agenda

1. Consent Decree Background
2. **Getting to Know You: Demographic and Clifton and Clifton Heights Area Use Questions**
3. Update on Clifton Heights Design Process
 - Results from the Conceptual Design Meeting
4. Present Design Options to You
5. Gather Your Ideas & Preferences on Design Options
6. Collect Comments from You (Cards Provided)

Public Engagement Tools: “Clickers” and Online Polling

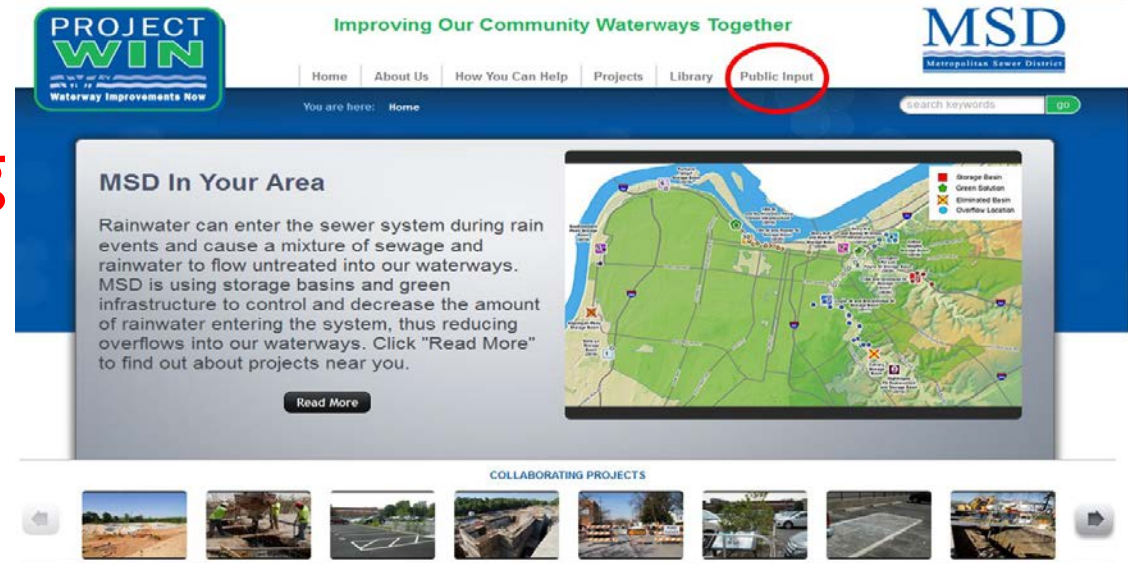
“Clickers” for Public Meetings

- Simple To Use
- Anonymous (No One Knows Your Answers)
- Simultaneous (We All See the Results At the Same Time)
- Equal Voice for All



Online Polling for Those Who Can't Attend Public Meetings

msdprojectwin.org



PROJECT WIN
Waterway Improvements Now

Improving Our Community Waterways Together

MSD
Metropolitan Sewer District

Home About Us How You Can Help Projects Library **Public Input**

You are here: Home

search keywords 00

MSD In Your Area

Rainwater can enter the sewer system during rain events and cause a mixture of sewage and rainwater to flow untreated into our waterways. MSD is using storage basins and green infrastructure to control and decrease the amount of rainwater entering the system, thus reducing overflows into our waterways. Click "Read More" to find out about projects near you.

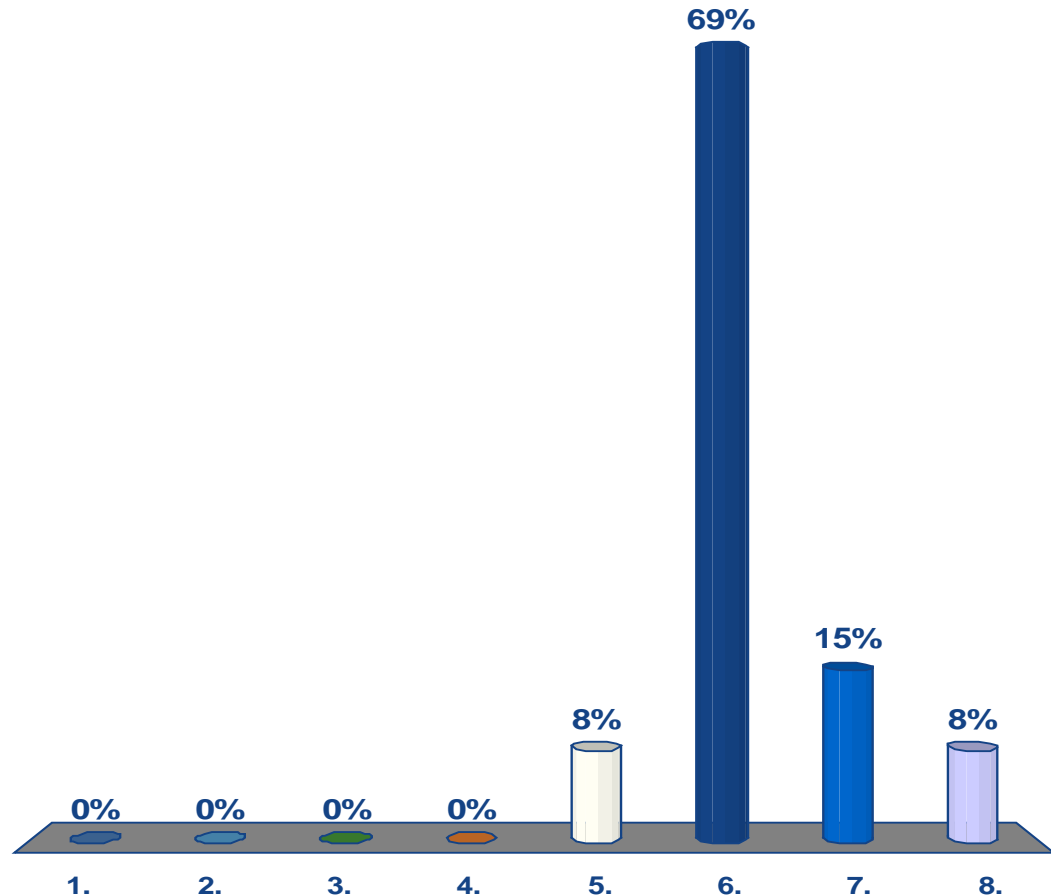
Read More

COLLABORATING PROJECTS



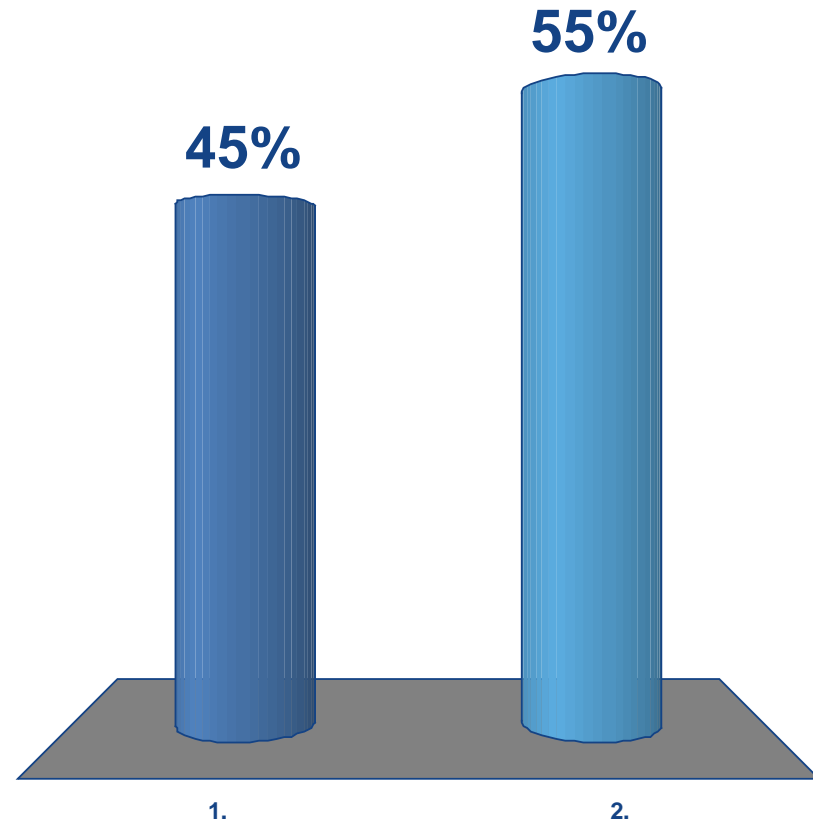
How Young Are You?

1. 0-19
2. 20-29
3. 30-39
4. 40-49
5. 50-59
6. 60-69
7. 70-79
8. 80+

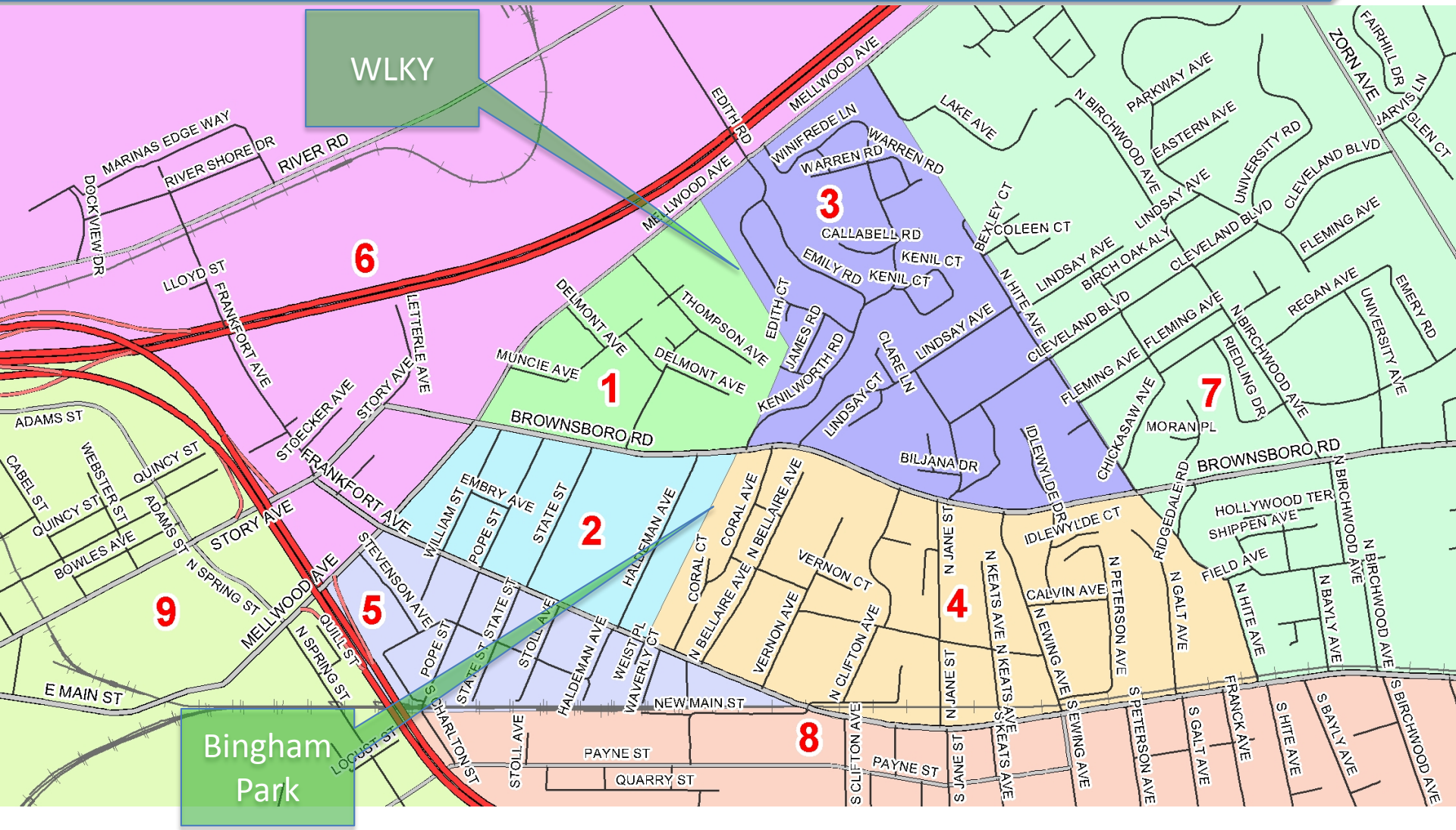


Gender?

1. Male
2. Female

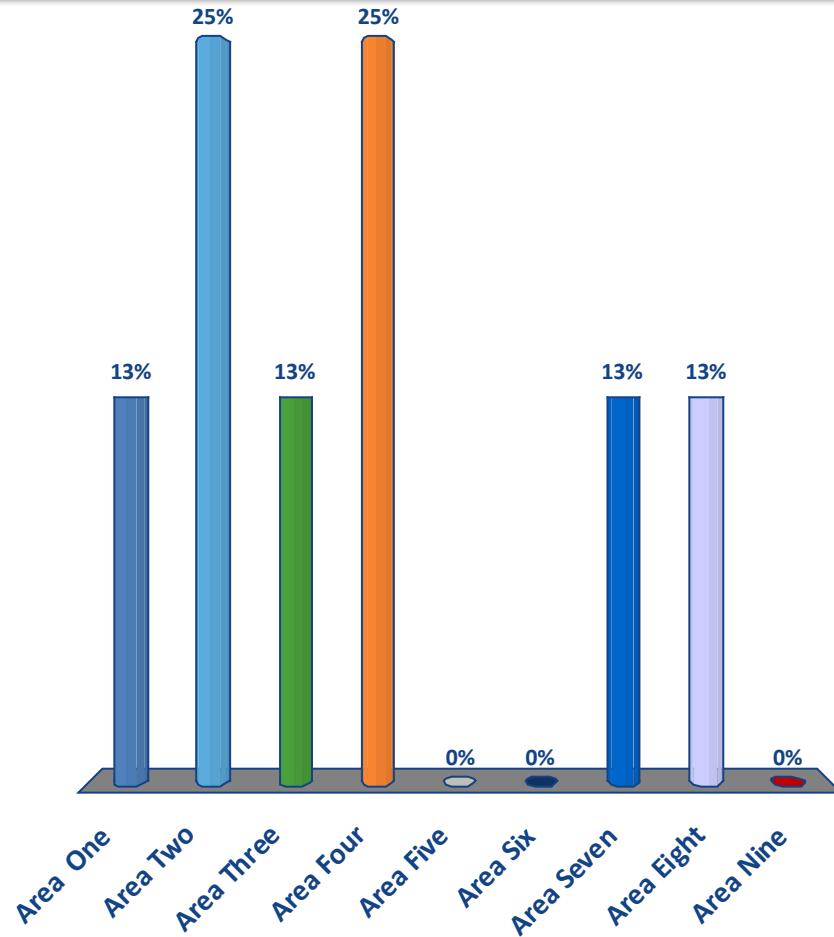


Where do you live, work, and spend your days?

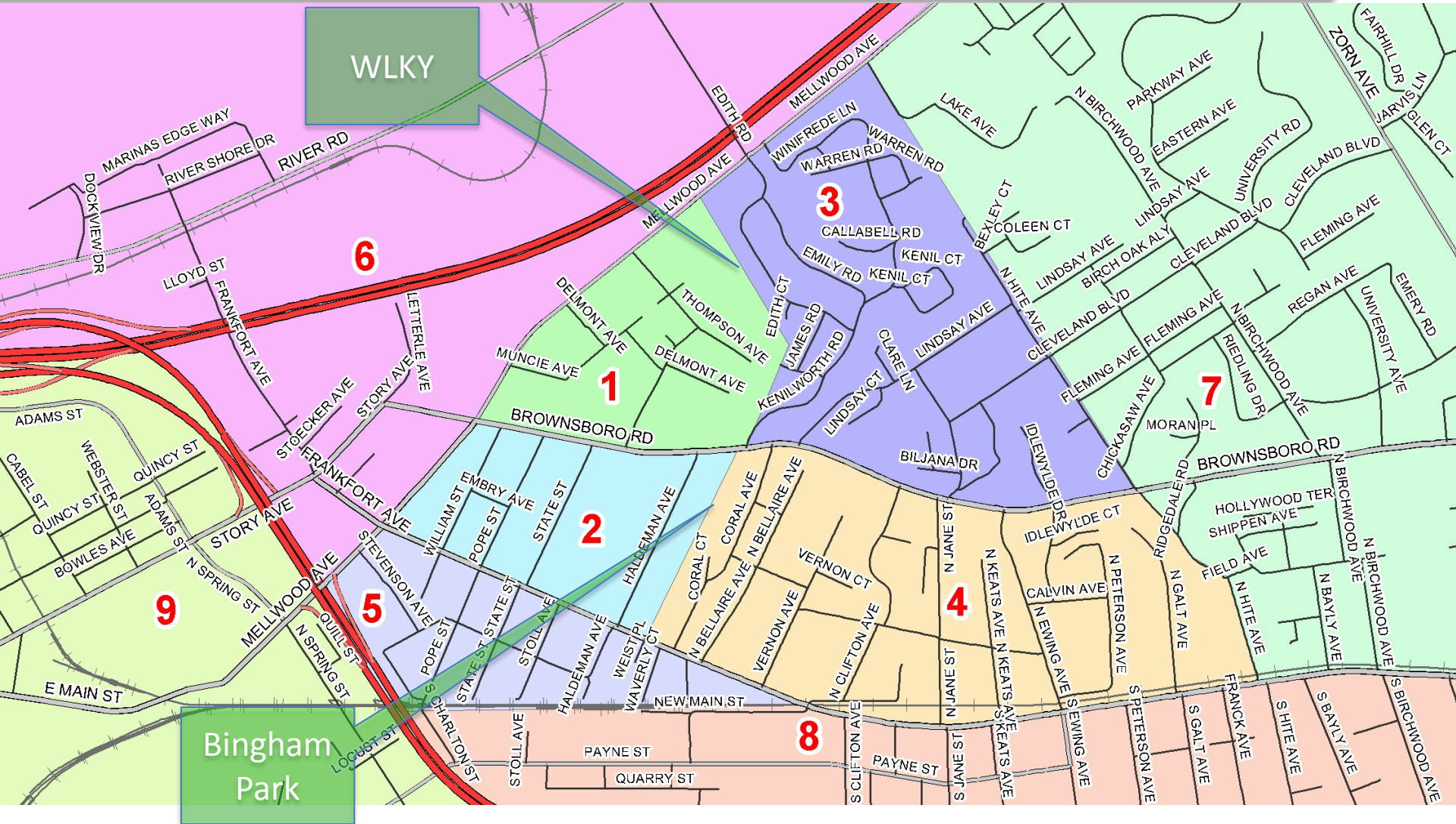


Where Do You Live?

1. Area One
2. Area Two
3. Area Three
4. Area Four
5. Area Five
6. Area Six
7. Area Seven
8. Area Eight
9. Area Nine

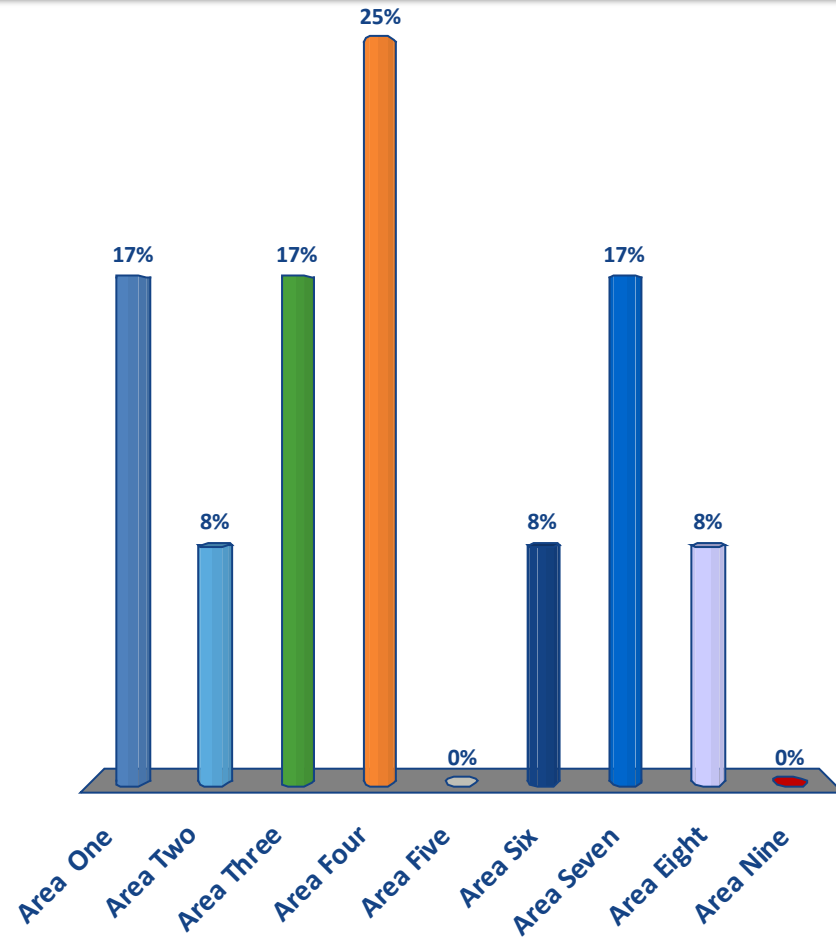


Where do you spend your days?

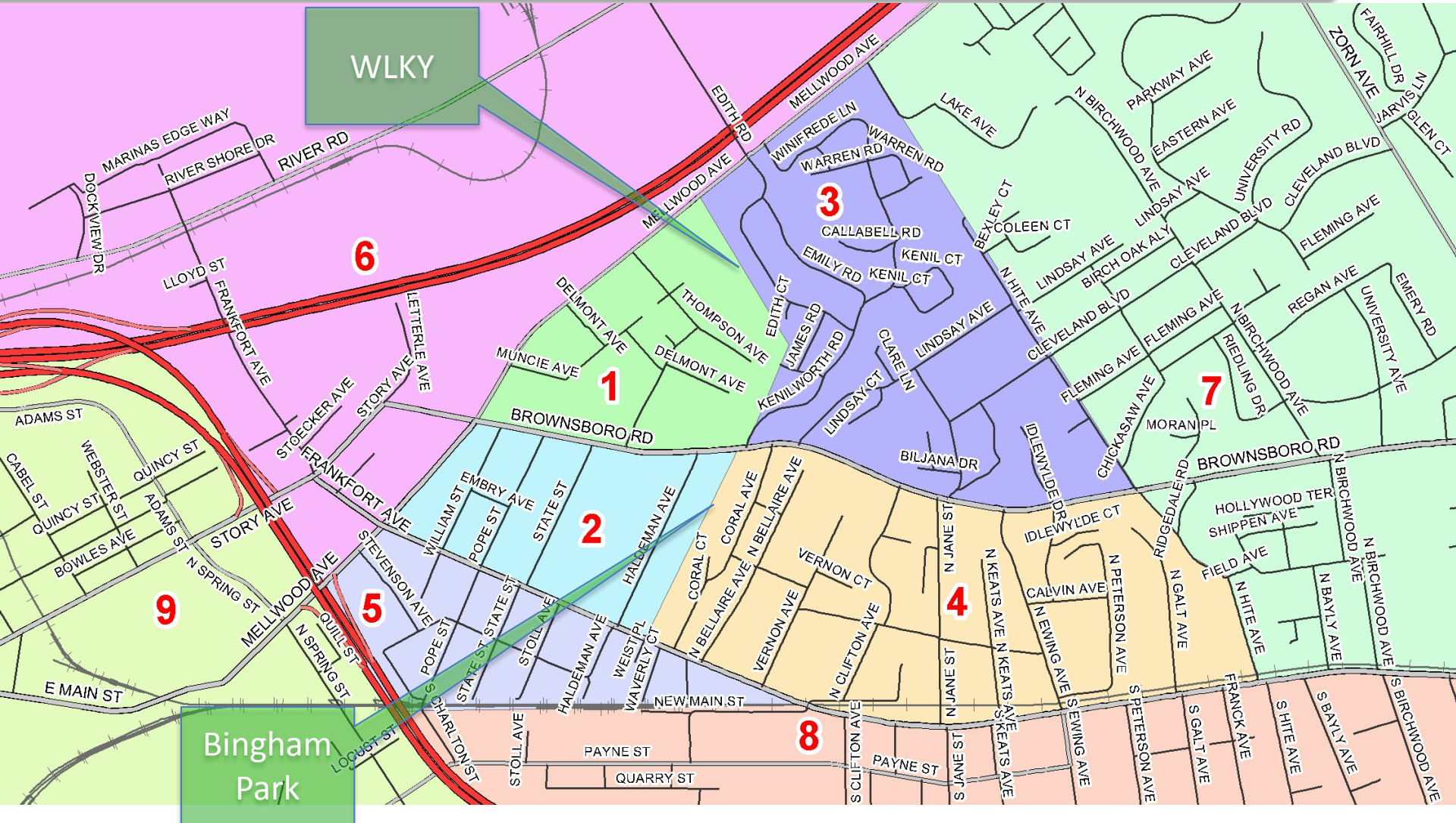


Where Do You Spend Your Days? (3)

1. Area One
2. Area Two
3. Area Three
4. Area Four
5. Area Five
6. Area Six
7. Area Seven
8. Area Eight
9. Area Nine

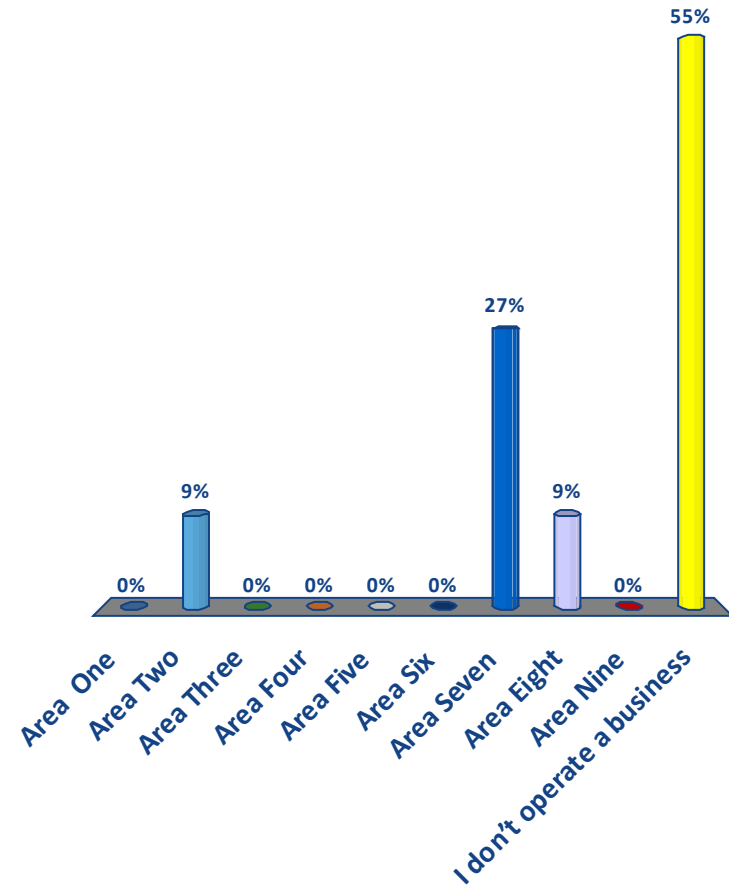


Where do you operate a business?



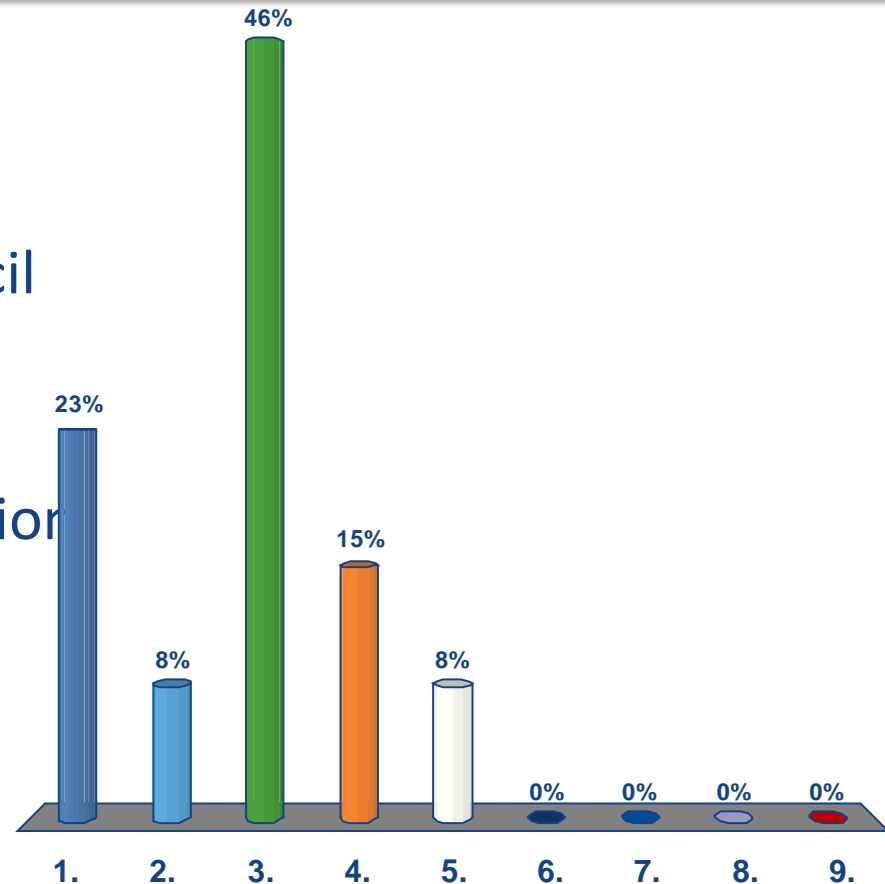
Where Do You Operate a Business?

1. Area One
2. Area Two
3. Area Three
4. Area Four
5. Area Five
6. Area Six
7. Area Seven
8. Area Eight
9. Area Nine
10. I don't operate a business



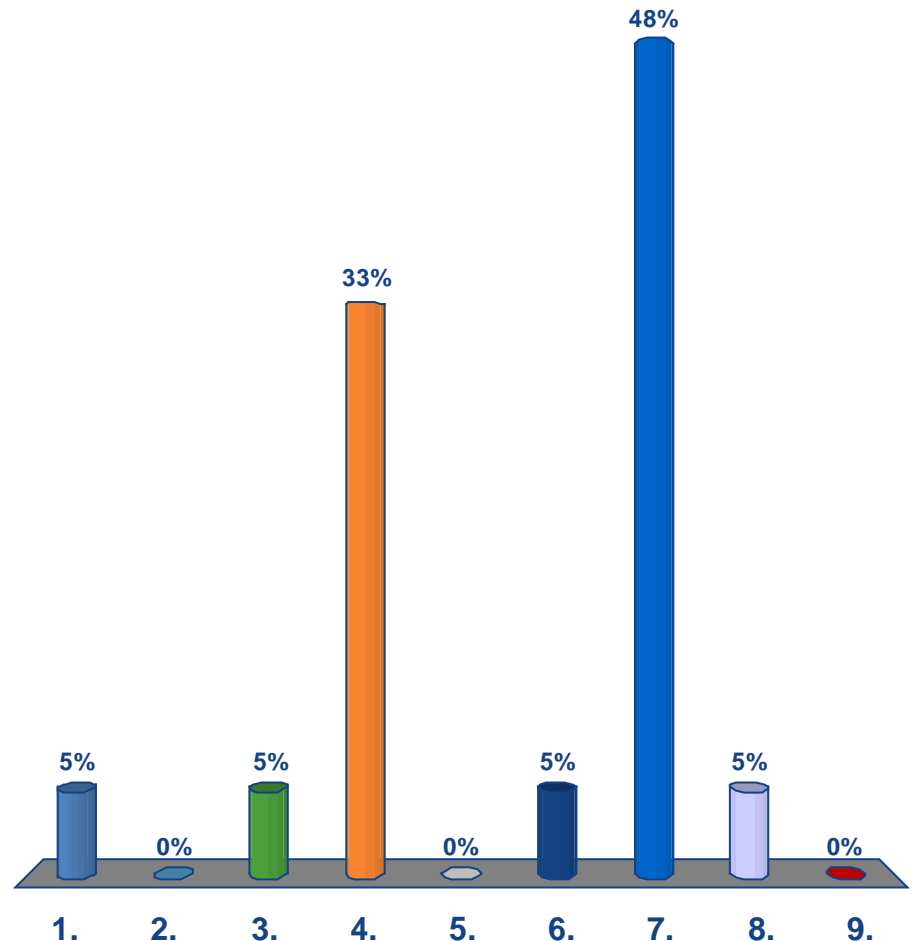
How Did You Hear About This Meeting? (Up to 3)

1. Post Card
2. Saw It in the CJ
3. Saw it in a Metro Council District Newsletter
4. Heard about it from Neighborhood Association
5. Heard About it From Someone
6. Received a Flyer
7. Project WIN website
8. MSD Email
9. Other



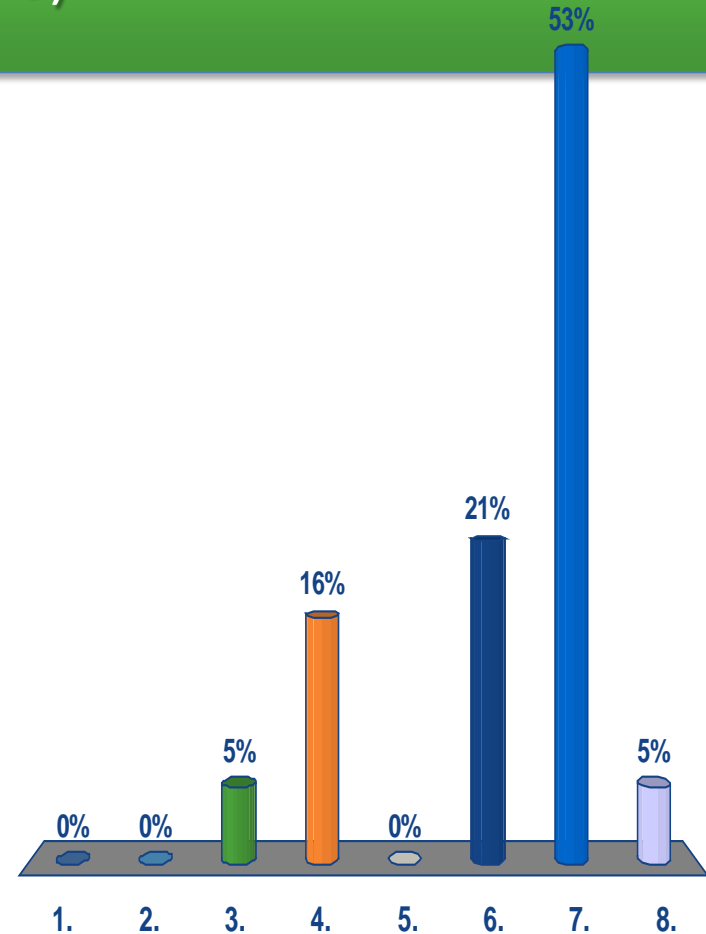
What Are Your Primary Sources of Information About MSD Projects? (Up to 3)

1. Public Meetings
2. Metro TV Videos
3. Project WIN website
4. Local Mainstream Print or Broadcast Media
5. Social Media
6. MSD Email
7. Metro Council District Newsletter
8. Bill Inserts
9. I don't have any previous knowledge of MSD projects.



How Would You Like to Learn About MSD's Projects? (Up to 3)

1. Public Meetings
2. Metro TV Videos
3. Project WIN website
4. Local Mainstream Print or Broadcast Media
5. Social Media
6. MSD Email
7. Metro Council District Newsletter
8. Bill Inserts



Advanced Design Meeting Agenda



1. Consent Decree Background
2. Getting to Know You: Demographic and Clifton and Clifton Heights Area Use Questions
- 3. Update on Clifton Heights Design Process**
 - **Results from the Conceptual Design Meeting**
4. Present Design Options to You
5. Gather Your Ideas & Preferences on Design Options
6. Collect Comments from You (Cards Provided)

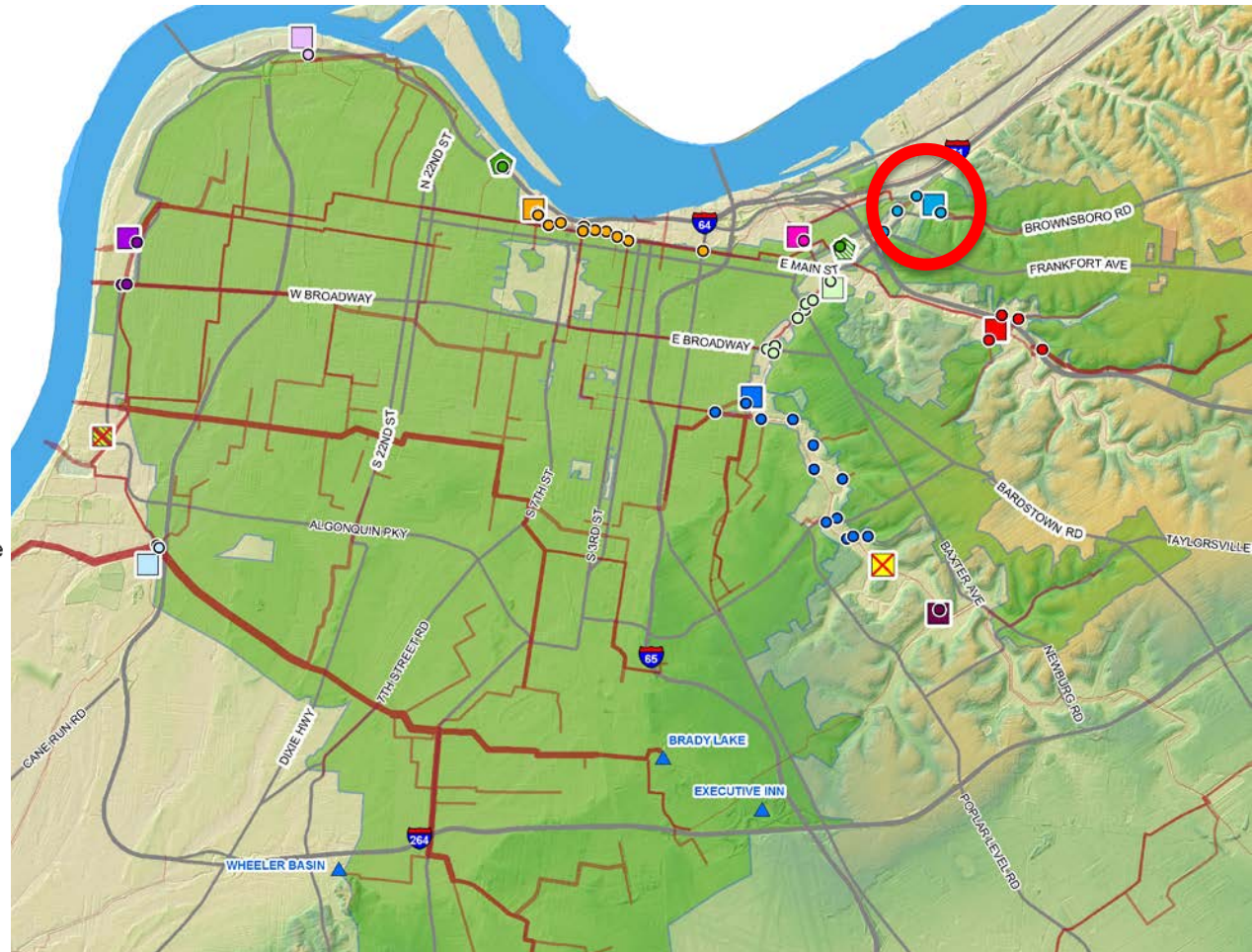
Clifton Heights Basin Project Update

IOAP Storage

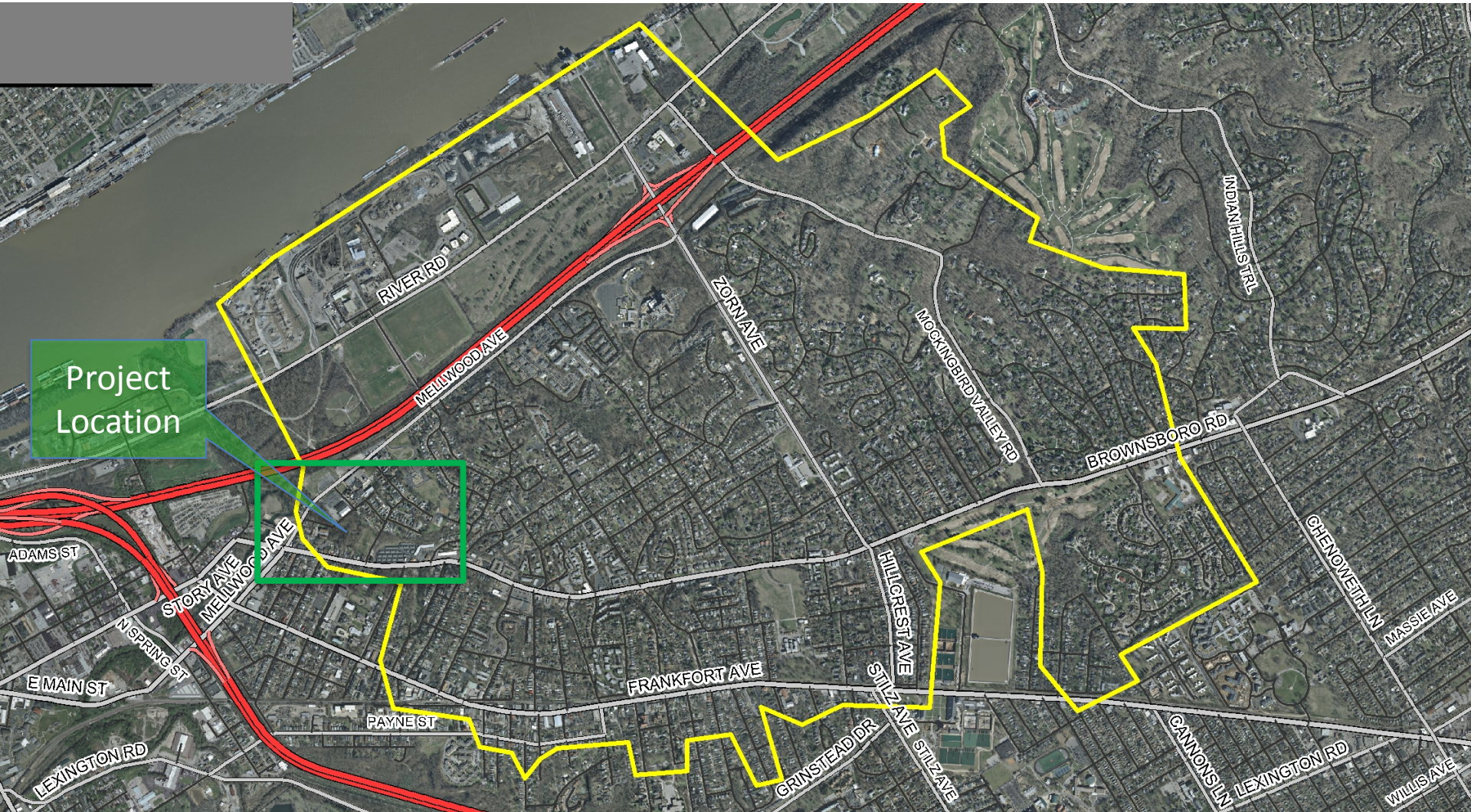
-  I-64 and Grinstead Dr Storage Basin
-  13th St and Rowan St Storage Basin
-  Lexington Rd and Payne St Storage Basin
-  Bells Ln Storage Basin
-  Clifton Heights Storage Basin
-  Logan St and Breckinridge St Storage Basin
-  Portland Wharf Storage Basin
-  Southwestern Pkwy Storage Basin
-  Story Ave and Main St Storage Basin
-  Nightingale PS Replacement and Storage Basin

Green Infrastructure Projects

-  Story Ave and Spring St Green Infrastructure
-  18th St and Northwestern Pkwy Green Infrastructure



The Area That Drains to These CSO's



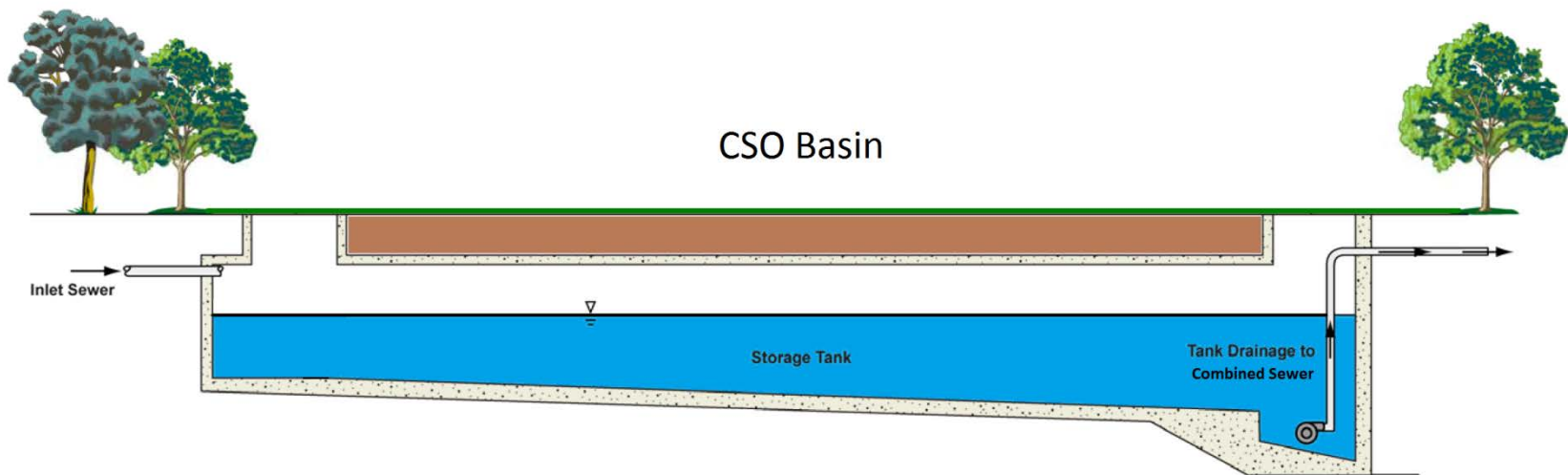
What the Proposed Basin Will Do

- Overflow diverted to storage basin
- 7.0 Million Gallons
- Reduces the number of overflows from 127 to 6 in a typical year.
- Reduces the amount of overflow from 107 million to about 3.5 million gallons in a typical year



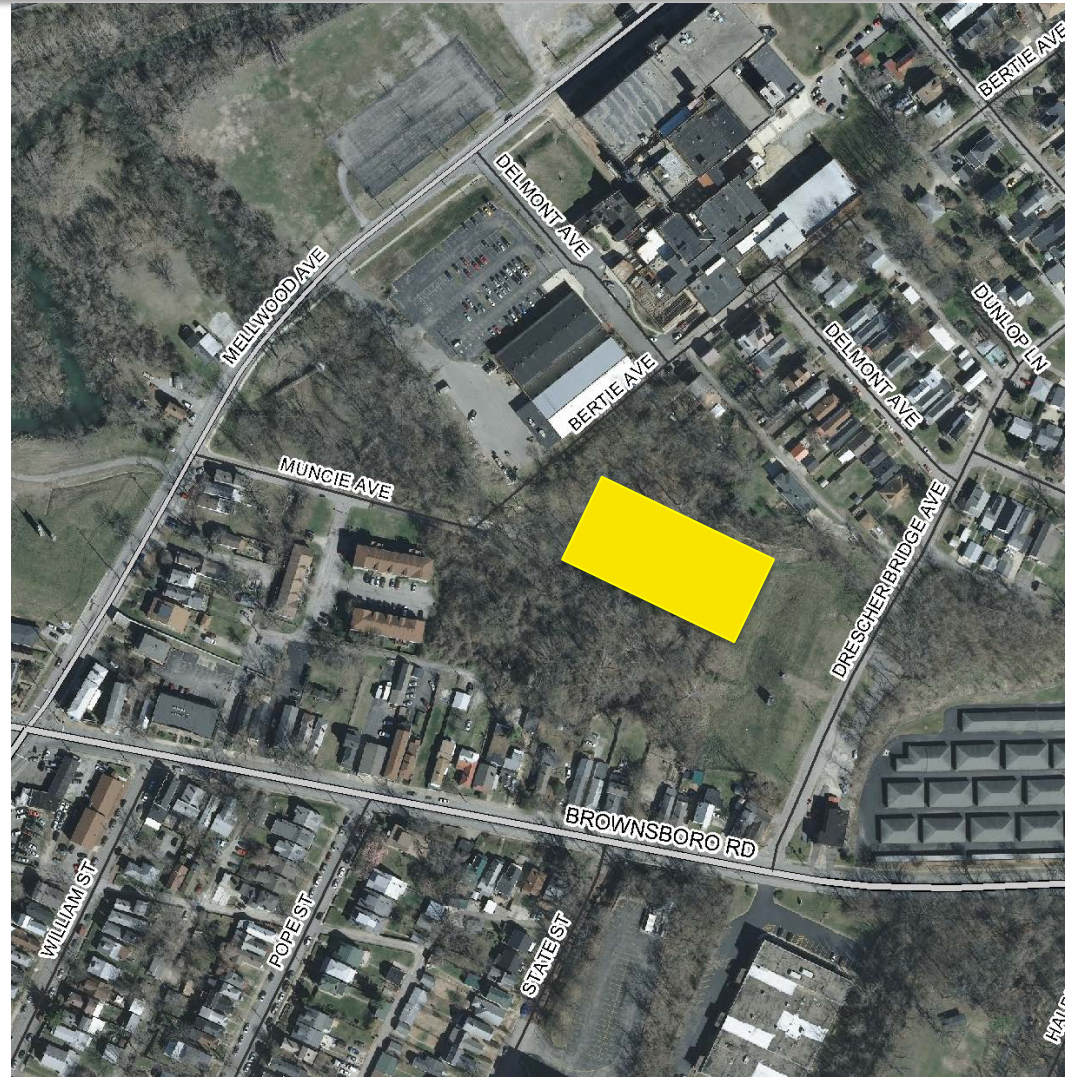
How Basins Function

- Temporary storage for CSO overflows
- Overflow released back into the system for treatment when capacity is available, typically within 24 hours after the rain event
- Rinsed with an automatic system



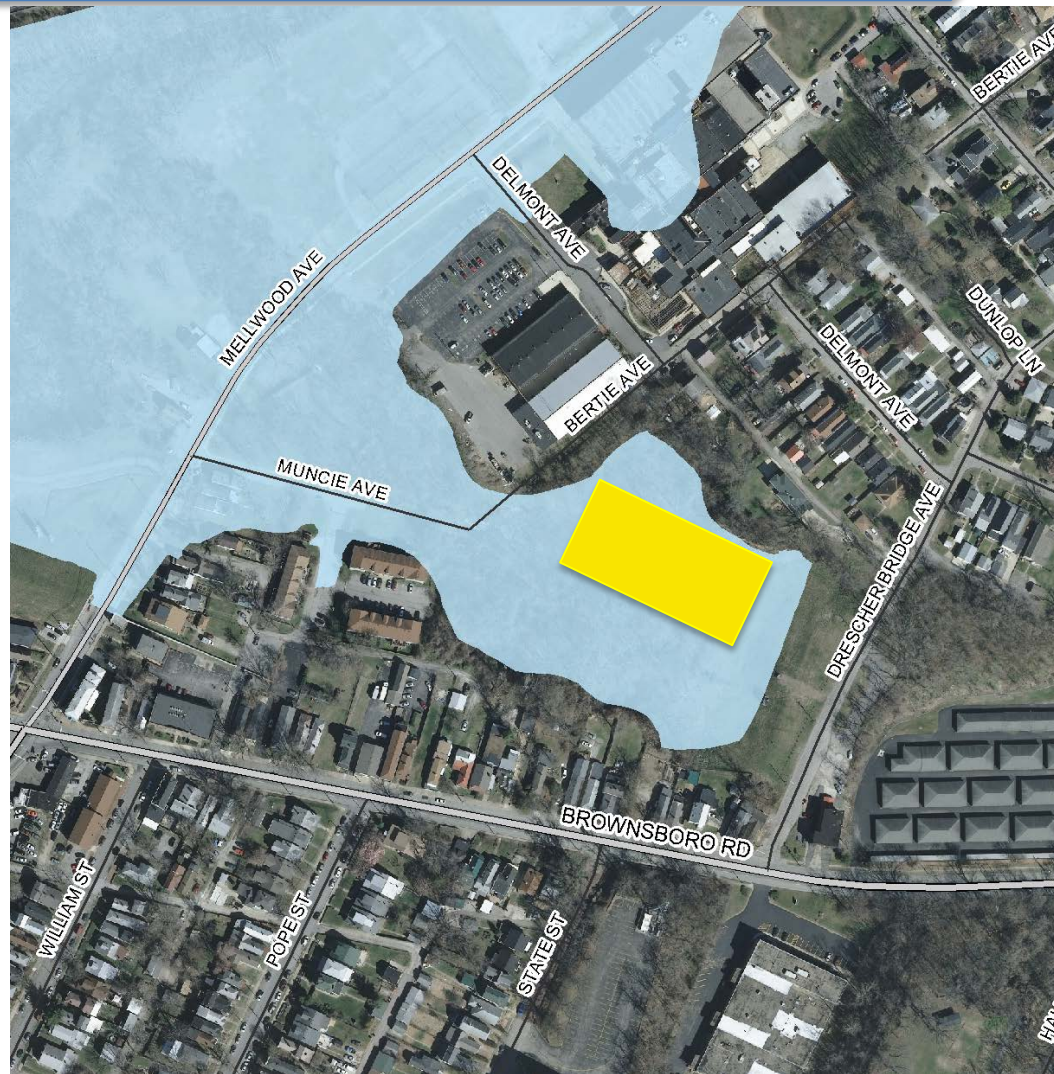
Access and Visibility

- Located on city property
- Limited road access
- Surrounded by trees



Access and Visibility

- Within the 100-year floodplain of the Ohio River



Conceptual Design Feedback

What You Told Us About Basin Appearance



Basin Concepts

- **Concept #1 | Above Ground**
 - Basin top is constructed completely above the 100-year floodplain
- **Concept #2 | Partially Above Ground**
 - Only mechanical access points are constructed above the 100-year floodplain, the rest is at ground level
- **Concept #3 | Below Ground**
 - All basin access points are located at ground level and the basin top is below ground



Clifton Heights CSO Basin Concept #1: Above Ground

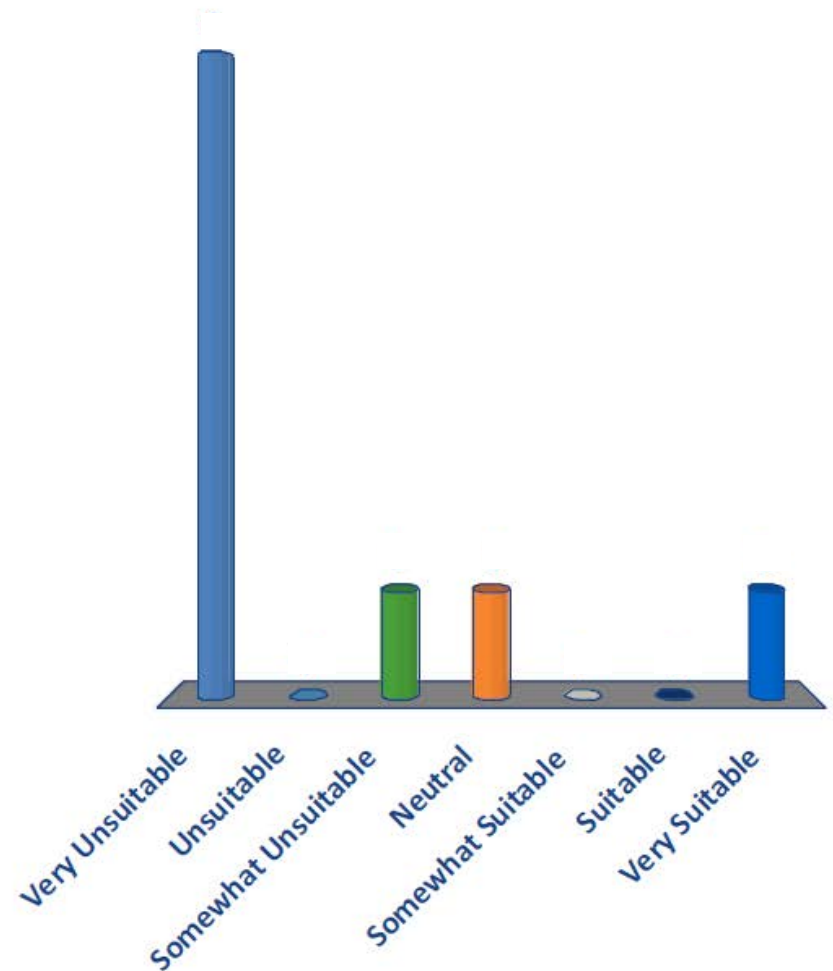
Southeast



You Didn't Think Much of Concept 1

1. Very Unsuitable
2. Unsuitable
3. Somewhat Unsuitable
4. Neutral
5. Somewhat Suitable
6. Suitable
7. Very Suitable

Mean = 2.22



Clifton Heights CSO Basin Concept #2: Partially Above Ground

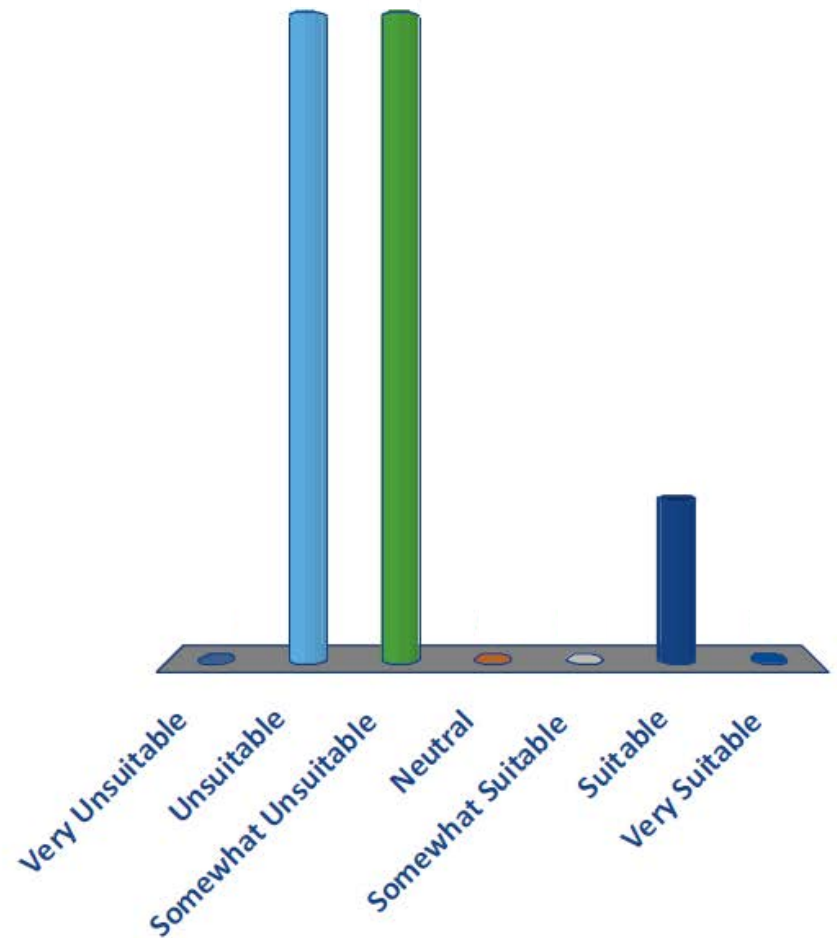
Southeast



Concept 2 Fared a Little Better

1. Very Unsuitable
2. Unsuitable
3. Somewhat Unsuitable
4. Neutral
5. Somewhat Suitable
6. Suitable
7. Very Suitable

Mean = 2.89



Clifton Heights CSO Basin Concept #3: Below Ground

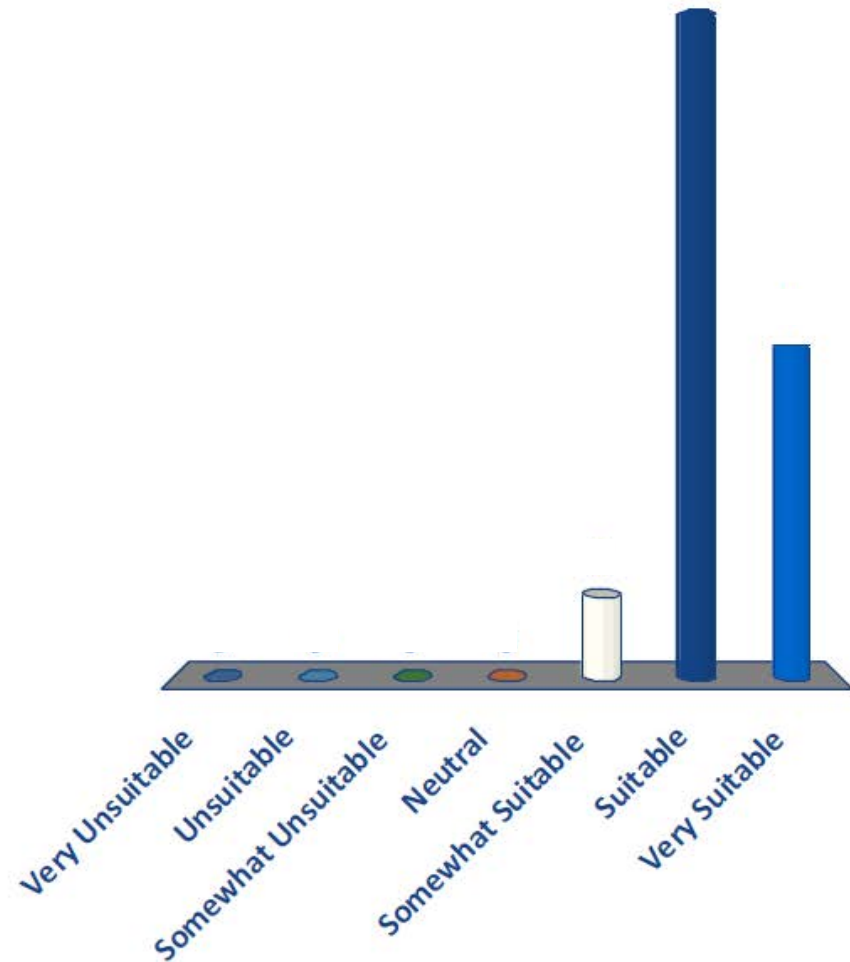
Southeast



Concept 3 Was Clearly Preferred

1. Very Unsuitable
2. Unsuitable
3. Somewhat Unsuitable
4. Neutral
5. Somewhat Suitable
6. Suitable
7. Very Suitable

Mean = 6.23



Clifton Heights CSO Basin Concept #3: Below Ground

Southeast



Considerations Important to You

- Should be visually aesthetic
- Should be environmentally friendly
- The surface should be useable
- Cost is important

Advanced Design Meeting Agenda

1. Consent Decree Background
2. Getting to Know You: Demographic and Clifton and Clifton Heights Area Use Questions
3. Update on Clifton Heights Design Process
 - Results from the Conceptual Design Meeting
- 4. Present Design Options to You**
5. Gather Your Ideas & Preferences on Design Options
6. Collect Comments from You (Cards Provided)

Remaining Design Options

- Fencing
 - What are the screening / appearance options?
- Security / Access
 - What kind of access should there be to the basin area?



Fencing, Screening, and Appearance

- Much of the basin area is screened by existing trees.
- A portion would be visible without additional screening.
- Options include:
 - Chain link fence with or without green screening
 - Decorative metal fence
 - No fencing: View of grassed field



Option #1: Chain link fencing



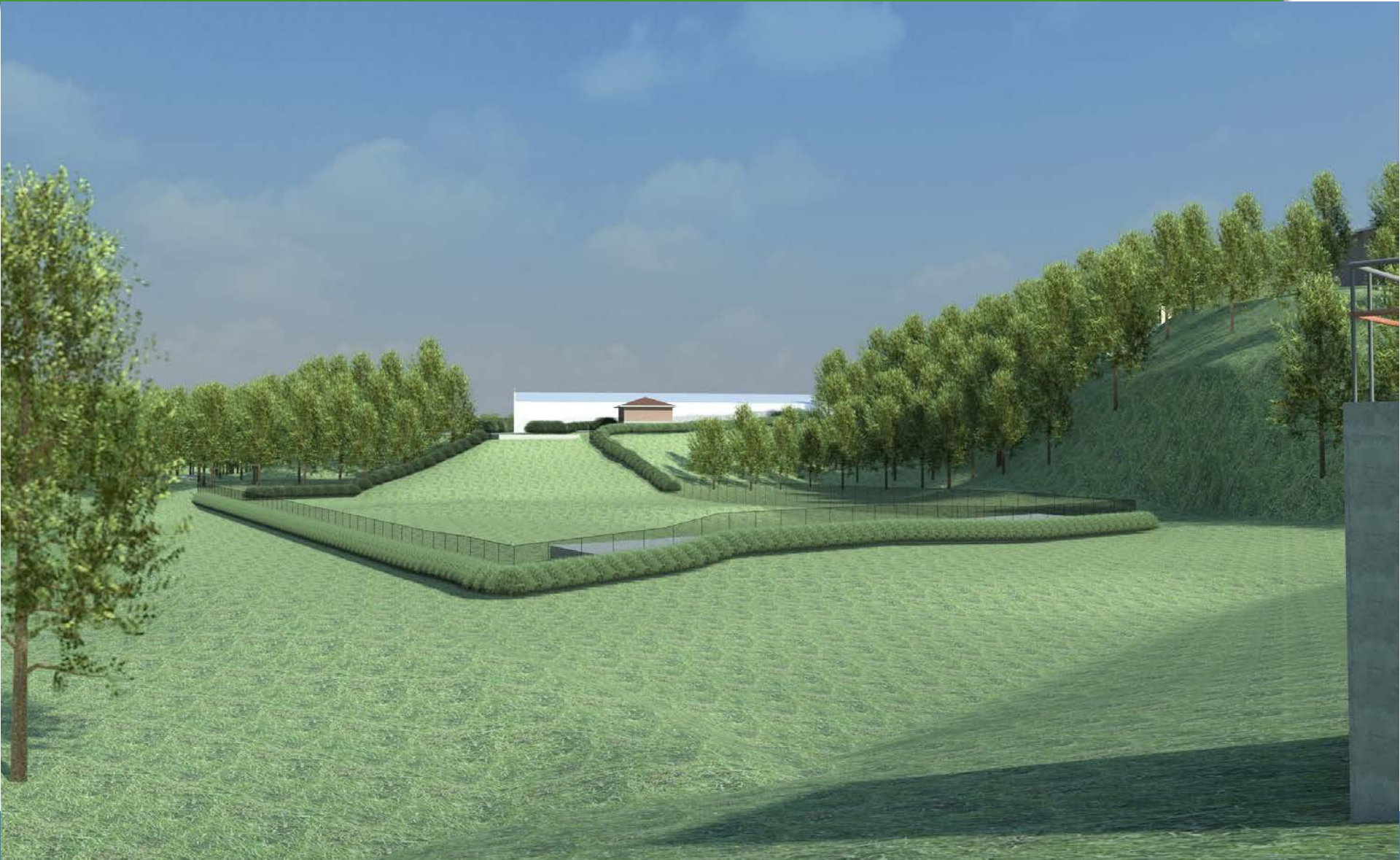
Option #1: Chain link fencing



Option #2: Chain link fencing with screening



Option #2: Chain link fencing with screening



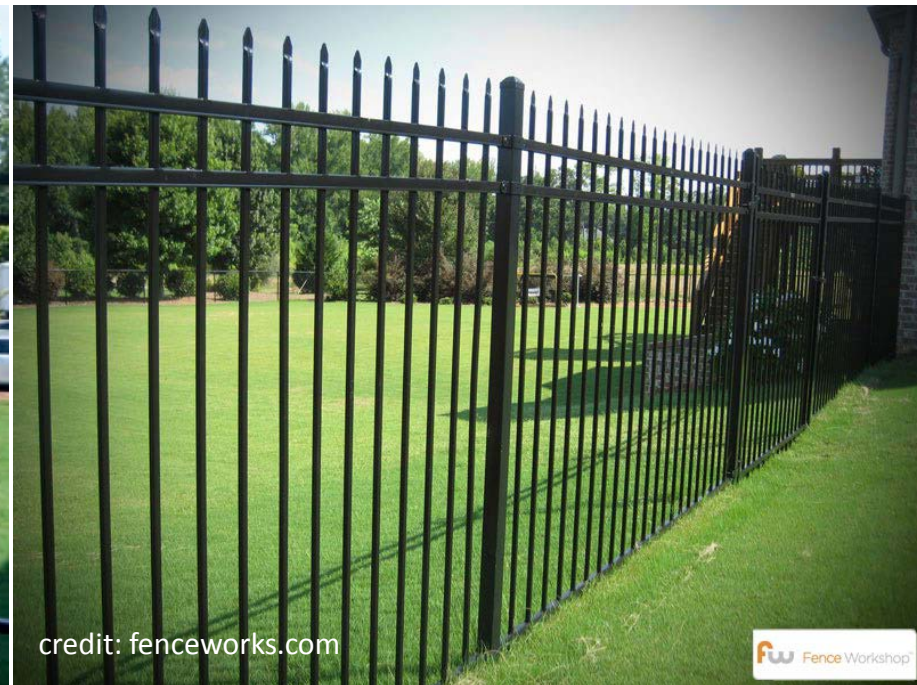
Option #2: Chain link fencing with screening



Option #3: Decorative metal fencing



Option #3: Decorative metal fencing

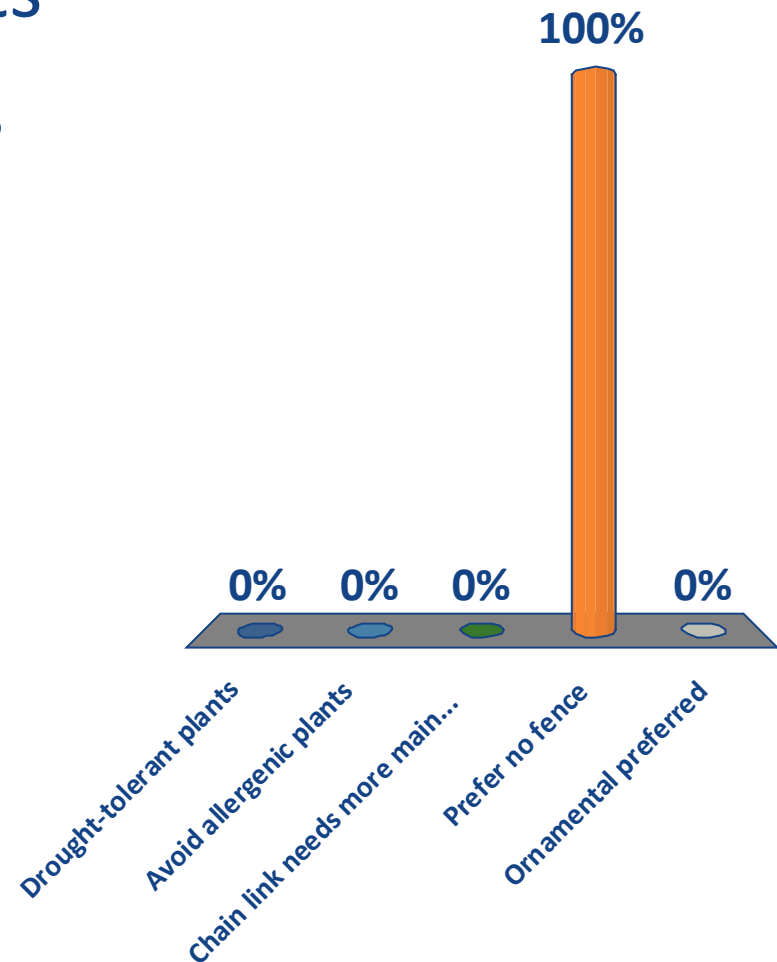


Advanced Design Meeting Agenda

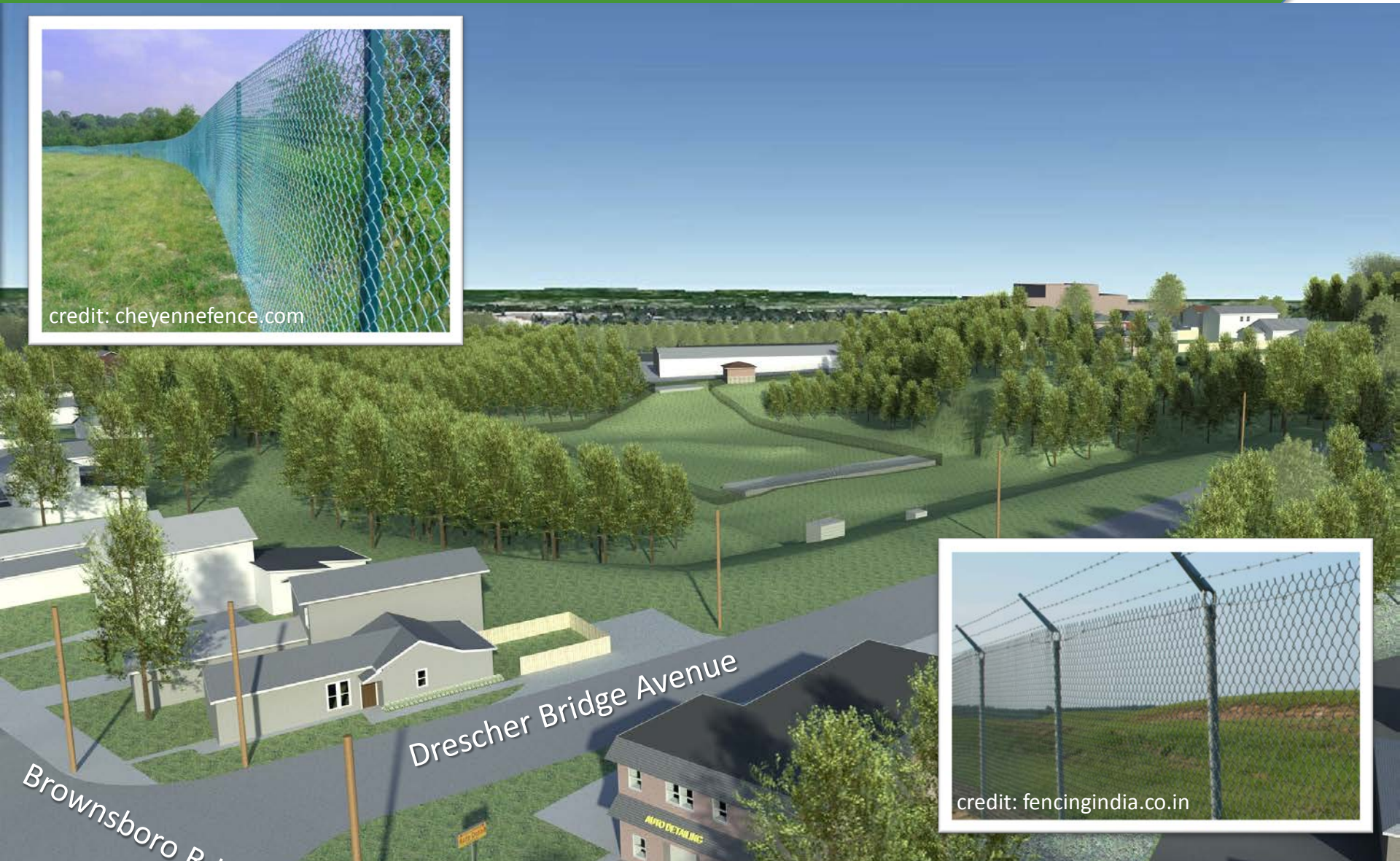
1. Consent Decree Background
2. Getting to Know You: Demographic and Clifton and Clifton Heights Area Use Questions
3. Update on Clifton Heights Design Process
 - Results from the Conceptual Design Meeting
4. Present Design Options to You
5. **Gather Your Ideas & Preferences on Design Options**
6. Collect Comments from You (Cards Provided)

Pluses or Minuses About Any of These? (3)

1. Drought-tolerant plants
2. Avoid allergenic plants
3. Chain link needs more maintenance
4. Prefer no fence
5. Ornamental preferred

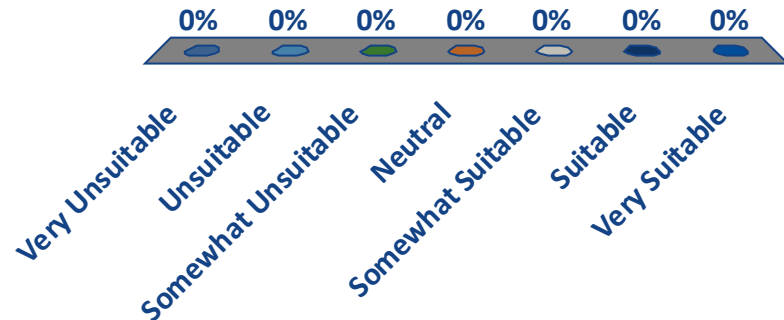


Option #1: Chain link fencing



Suitability of Option 1?

1. Very Unsuitable
2. Unsuitable
3. Somewhat Unsuitable
4. Neutral
5. Somewhat Suitable
6. Suitable
7. Very Suitable



Option #2: Chain link fencing with screening



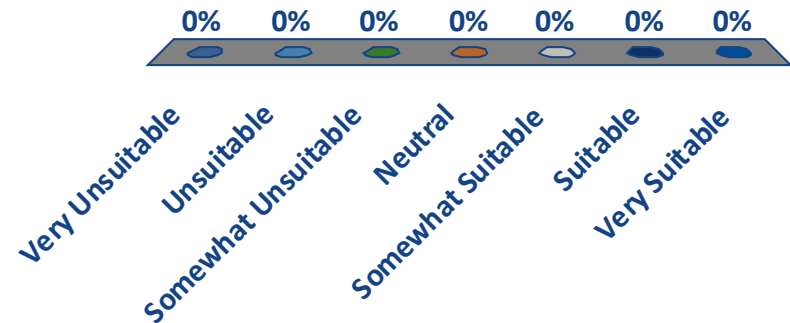
credit: diamondkingfencing.ca



credit: pinterest.com

Suitability of Option 2 ?

1. Very Unsuitable
2. Unsuitable
3. Somewhat Unsuitable
4. Neutral
5. Somewhat Suitable
6. Suitable
7. Very Suitable

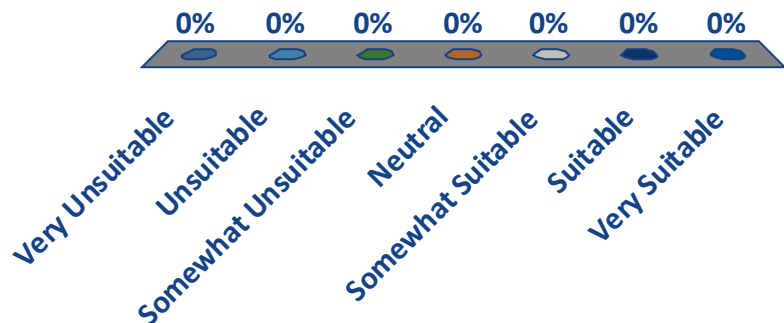


Option #3: Decorative metal fencing



Suitability of Option 3 ?

1. Very Unsuitable
2. Unsuitable
3. Somewhat Unsuitable
4. Neutral
5. Somewhat Suitable
6. Suitable
7. Very Suitable



Security and Access Questions

- Open grassed area.
- No trees or large shrubs on the basin cover.
- No motorized access.
- No amenities.
- MSD control building in one corner, secured.

Should we install fence to restrict access?

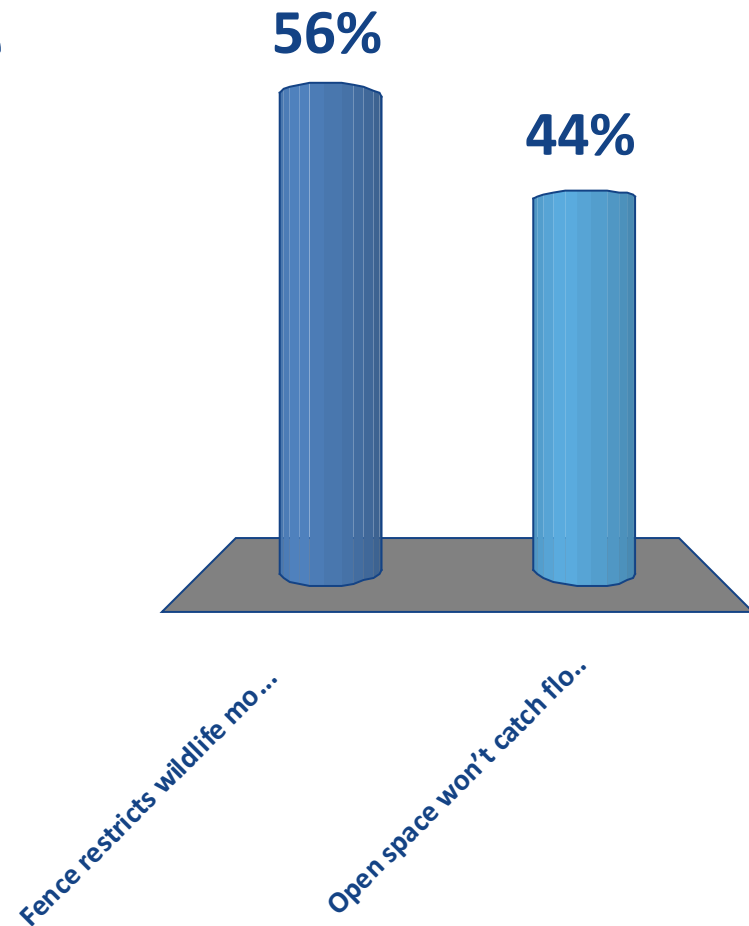


Clifton Heights CSO Basin



Thoughts About Granting or Restricting Access? (3)

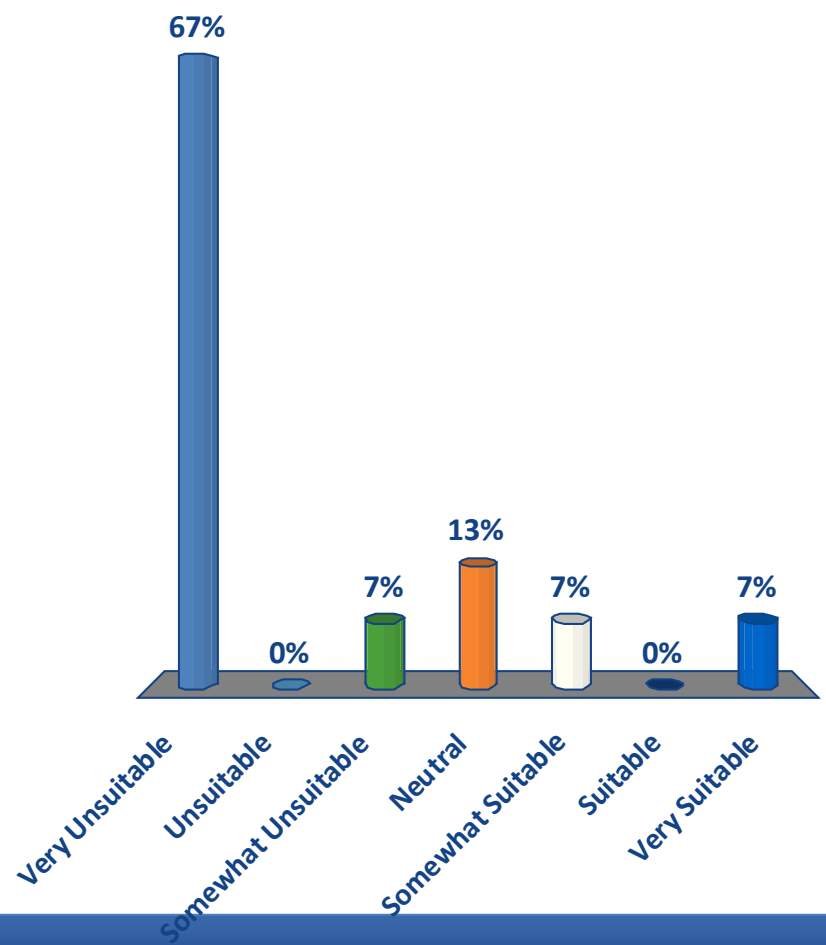
1. Fence restricts wildlife movement
2. Open space won't catch flood debris



How Suitable is a Fence for This Location?

1. Very Unsuitable
2. Unsuitable
3. Somewhat Unsuitable
4. Neutral
5. Somewhat Suitable
6. Suitable
7. Very Suitable

Mean = 2.20



THANK YOU. That helps us.

Next Steps

- Evaluate your input
- Finalize the design
- Advertise the project for construction
- Meet with you before construction begins
 - Show you the final design
 - Tell you what to expect during the construction process
- Goal: Complete by Fall 2018
- To be put on the email list **for this project**, send a note mentioning **this project** to:

commentsIOAP@msdlouky.org

Anticipated Schedule

- Project Design
 - Conceptual Design Public Input Meeting Dec 2014
 - Advanced Design Public Input Meeting May 2015
 - Advanced Design Public Input Meeting September 2015
- **Final Design Completion** *Winter 2015*
- Pre-Construction Public Meeting *Spring 2016*
- Construction Start *Summer 2016*
- **Construction Completion Deadline** **Dec. 31, 2018**



Advanced Design Meeting Agenda

1. Consent Decree Background
2. Getting to Know You: Demographic and Clifton and Clifton Heights Area Use Questions
3. Update on Clifton Heights Design Process
 - Results from the Conceptual Design Meeting
4. Present Design Options to You
5. Gather Your Ideas & Preferences on Design Options
6. **Collect Comments from You (Cards Provided)**

Working Together for Public Health and Safety

If you see this...

Call MSD Immediately!

502-587-0603



MSD
Metropolitan Sewer District

**PROJECT
WIN**
Waterway Improvements Now

Find Out More at msdprojectwin.org

Online Survey Available Within One Week at:

<http://tinyurl.com/MSDCliftonHeights3>

The screenshot displays the MSD Project Win website interface. At the top left is the 'PROJECT WIN Waterway Improvements Now' logo. The main navigation bar includes links for 'Home', 'About Us', 'How You Can Help', 'Project Library', and 'Public Input', with 'Public Input' circled in red. A large red arrow points from the 'Public Input' link to a map of Clifton Heights. The map features a legend with four categories: 'Storage Basin' (red square), 'Green Solution' (green circle), 'Eliminated Basin' (orange X), and 'Overflow Location' (blue circle). The map shows various infrastructure projects across the area, with labels for specific basins and solutions. Below the map is a 'Read More' button.

PROJECT WIN
Waterway Improvements Now

Improving Our Community Waterways Together

MSD
Metropolitan Sewer District

Home | About Us | How You Can Help | Project Library | **Public Input**

You are here: Home

search keywords go

MSD In Your Area

Rainwater can enter the sewer system during rain events and cause a mixture of sewage and rainwater to flow untreated into our waterways. MSD is using storage basins and green infrastructure to control and decrease the amount of rainwater entering the system, thus reducing overflows into our waterways. Click "Read More" to find out about projects near you.

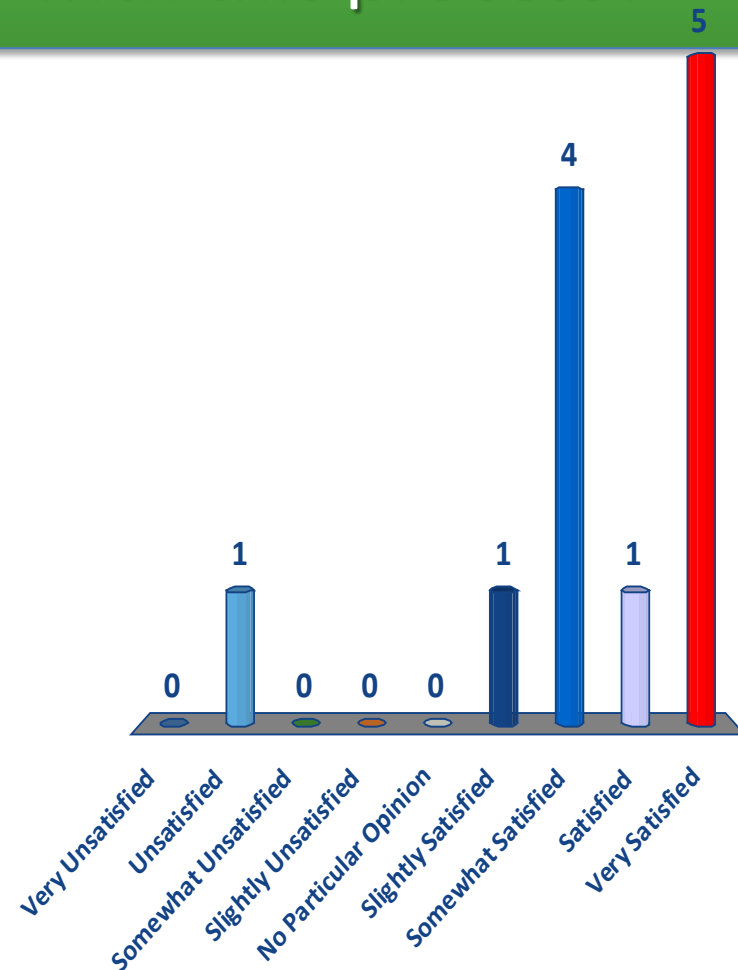
[Read More](#)

COLLABORATING PROJECTS

← [8 project images] →

How satisfied are you with this process?

1. Very Unsatisfied
2. Unsatisfied
3. Somewhat Unsatisfied
4. Slightly Unsatisfied
5. No Particular Opinion
6. Slightly Satisfied
7. Somewhat Satisfied
8. Satisfied
9. Very Satisfied




Mean = 7.42



THANK YOU
FOR YOUR TIME AND ASSISTANCE!

Watch the MSD website for updates and the online feedback version of this meeting, coming soon.



For *general information or emergencies* regarding the MSD system, call:

502-587-0603

Your Call Will be Answered

- By an MSD Staff Member
- Around the Clock
- Every Day of the Year

