

Paddy's Run Wet Weather Treatment Facility

Integrated Overflow Abatement Program
Public Input Meeting
May 10, 2012



Overview

- Communicate
 - Original Plan
 - Proposed Changes
 - Path Forward
- Provide Input Opportunity During Design



Combined Sewer Overflow Long Term Control Plan (LTCP) Program

- **19 Gray Infrastructure Projects**

- 4 Sewer Separations
- 13 Storage basins

- Replacement and expansion of Nightingale Pump Station

Paddy's Run Project

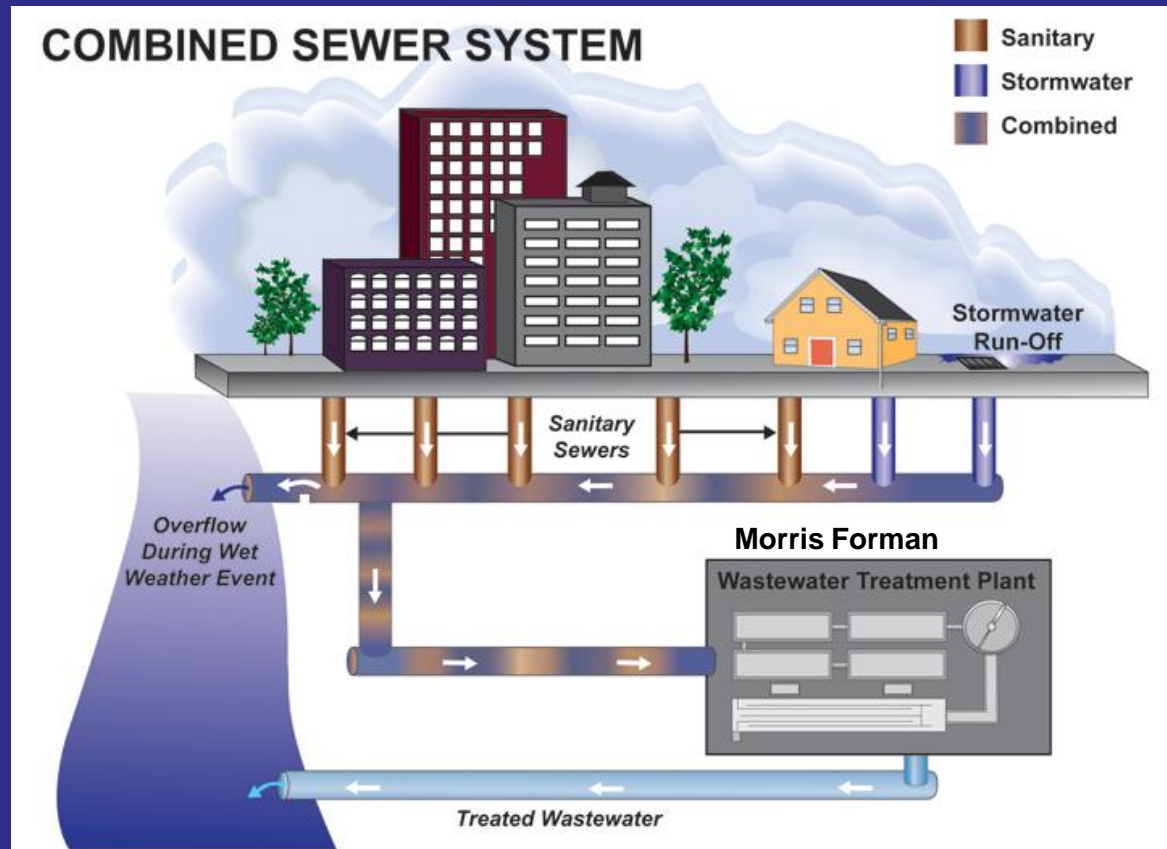
- ***1 High-Rate Wet Weather Treatment Facility***

- **Green Infrastructure Projects**

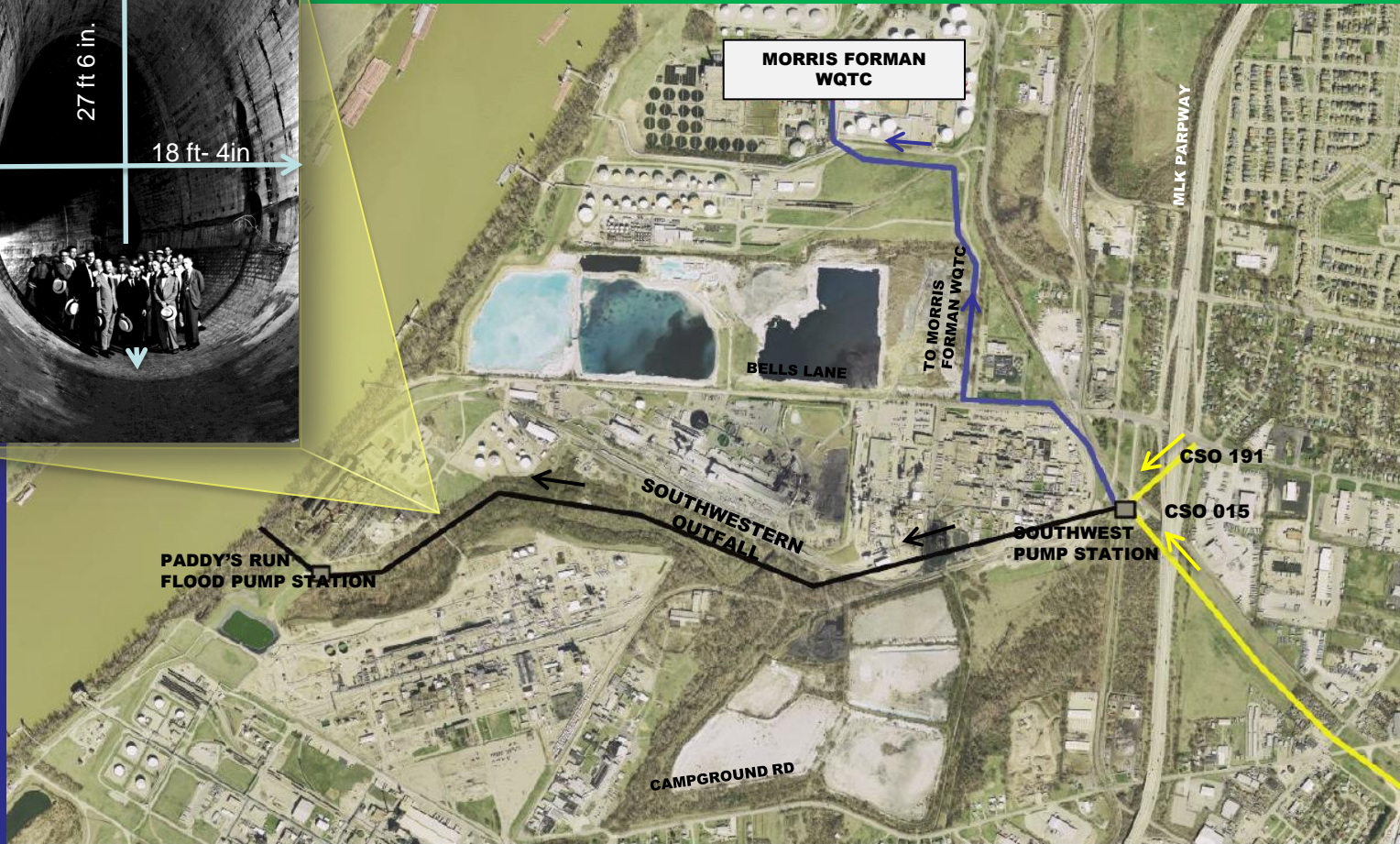
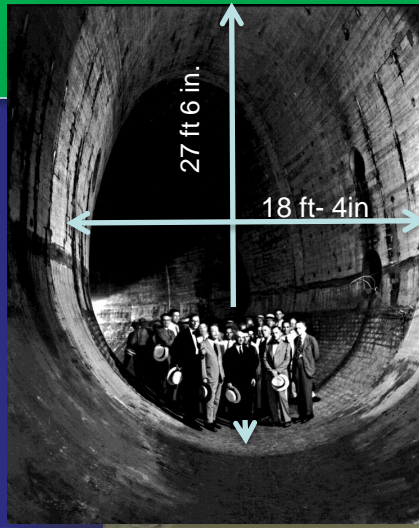
- **9 Flood Pump Station Projects**



Current Condition



Bells Lane Area



Project Background

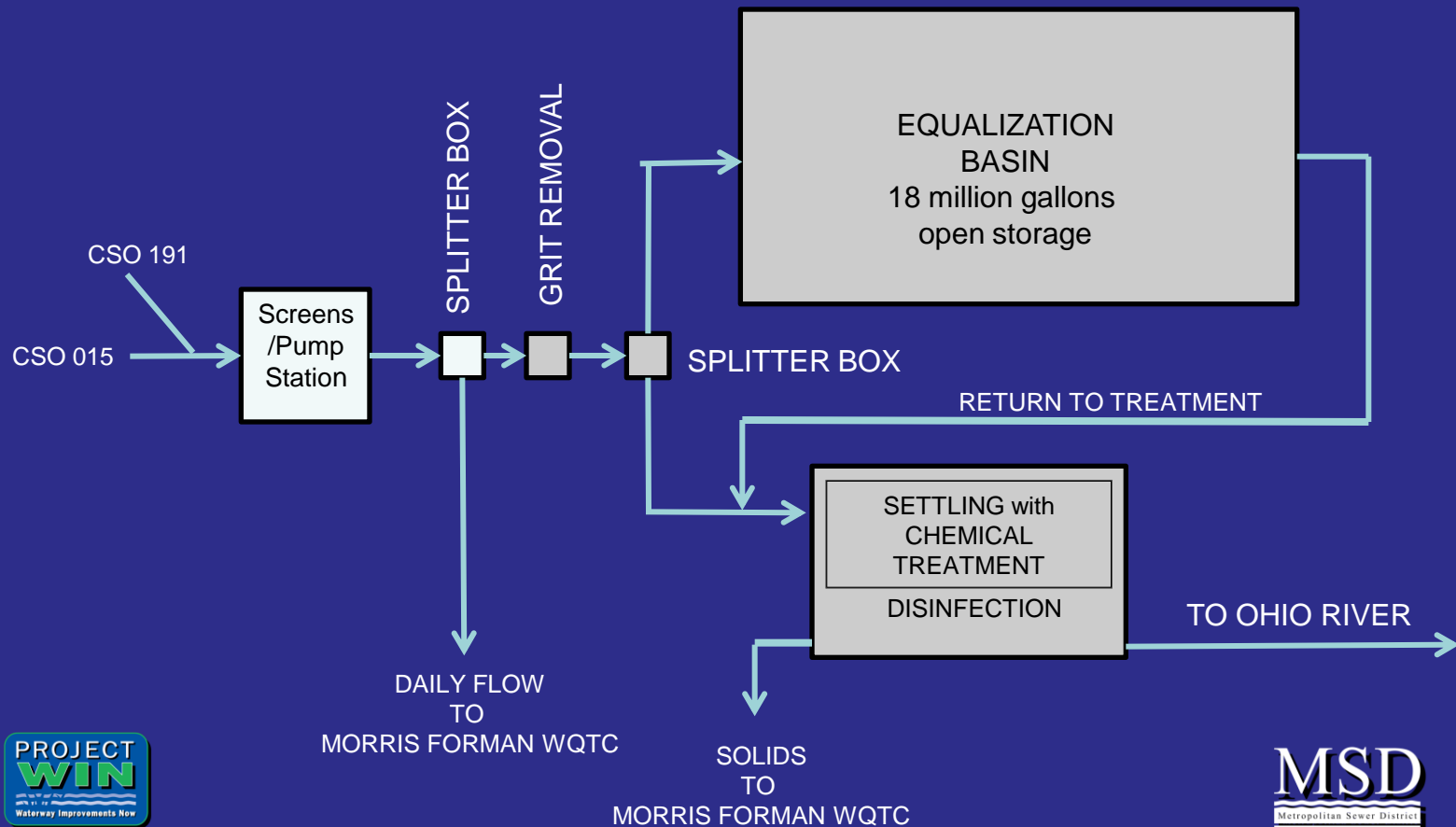
- Project Goal:
 - Reduce CSOs to max. of 8 per year.
 - Empty all storage within 24 hrs.
- Alternative analysis:
 - Treatment (550 MGD) –vs- Storage (68 million gals).
- Cost Effective Balance
 - 50 MGD High-Rate Treatment Facility
& 18.5 MG off-line storage
 - Treated water flows to Southwestern Outfall
 - Solids pumped to Morris Forman WQTC

High Rate Treatment Process

- Screen large material
- Remove grit
- Settle solids
- Disinfect liquids
- Discharge treated water to Ohio River
- Collect solids & pump to Morris Forman WQTC
- Equalization Basin to store water if needed



Paddy's Run Wet Weather Treatment Proposed Process Diagram



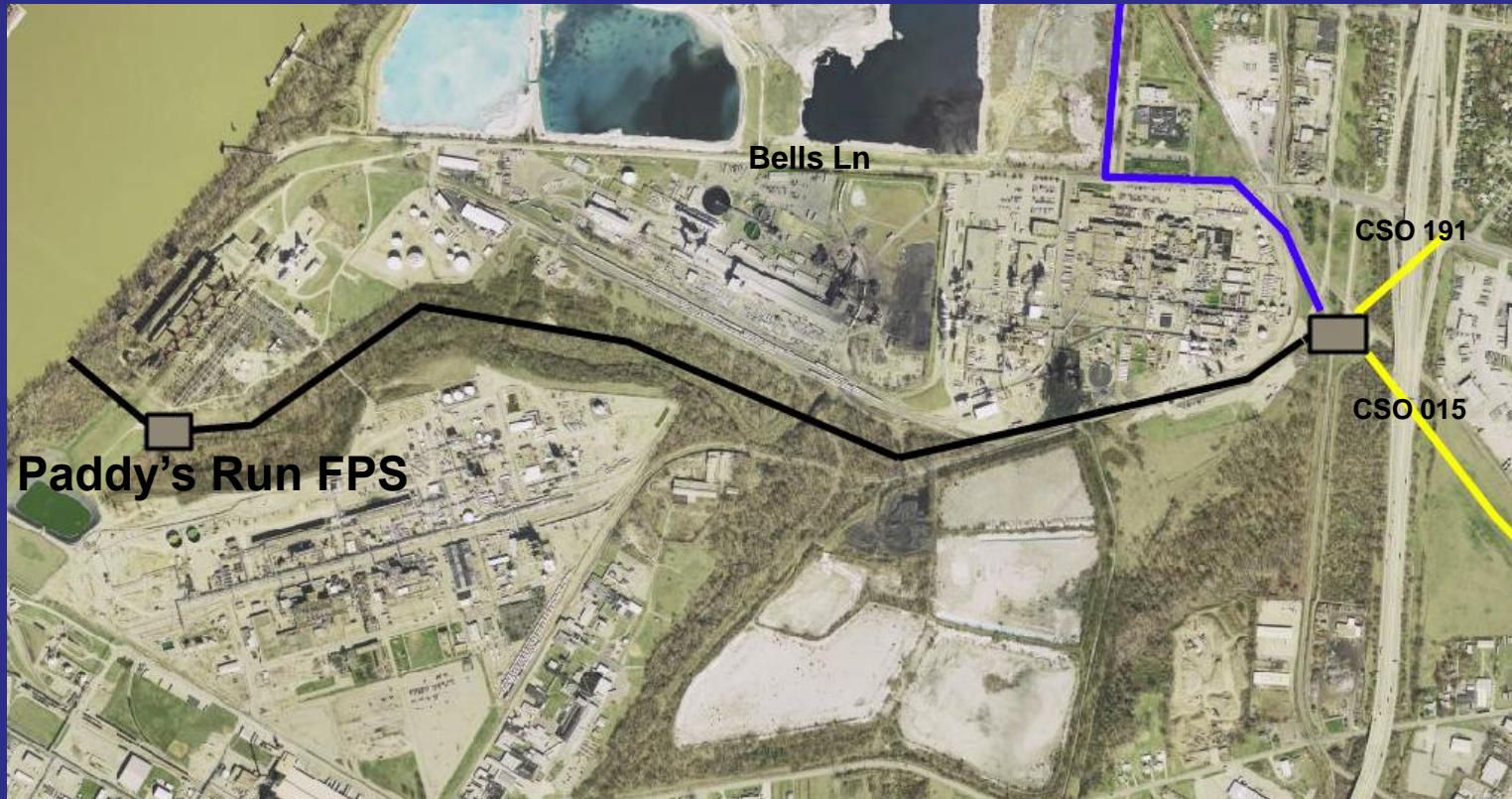
Project Challenges

Original location at Flood Pump Station

- Reviewed / approved by stakeholders
- Negotiations began in 2010
- Access limitations
- Security measures
- Environmental concerns



Southwestern Outfall



Collecting Public Input

Expand search for plant site & basin

- Vicinity of CSOs 015 and 191
- Tied to Southwestern Outfall pipe
- Property size 15 acres minimum
- Access for truck traffic
- Buffer zone to residential property



Project Schedule

- Preliminary Design
- Acquire property and easements
- Final Design
- Advertise for construction contract
- Construction Phase
- Accept wet weather flows

December 2016



Moving Forward

- Public involvement – Today
 - Communicate Site Requirements
 - Solicit Feedback/Suggestions
- Public Involvement – Next Phase
 - Communicate Site Selection & Facility Design
 - Solicit Feedback/Suggestions



Public Input Sought

- Provide written comments by June 15, 2012
- Send comments via email
commentsIOAP@msdlouky.org

- Mail comments

MSD IOAP Project Comments

Attention: Project WIN Program Manager

700 West Liberty St.

Louisville, KY 40203



The End

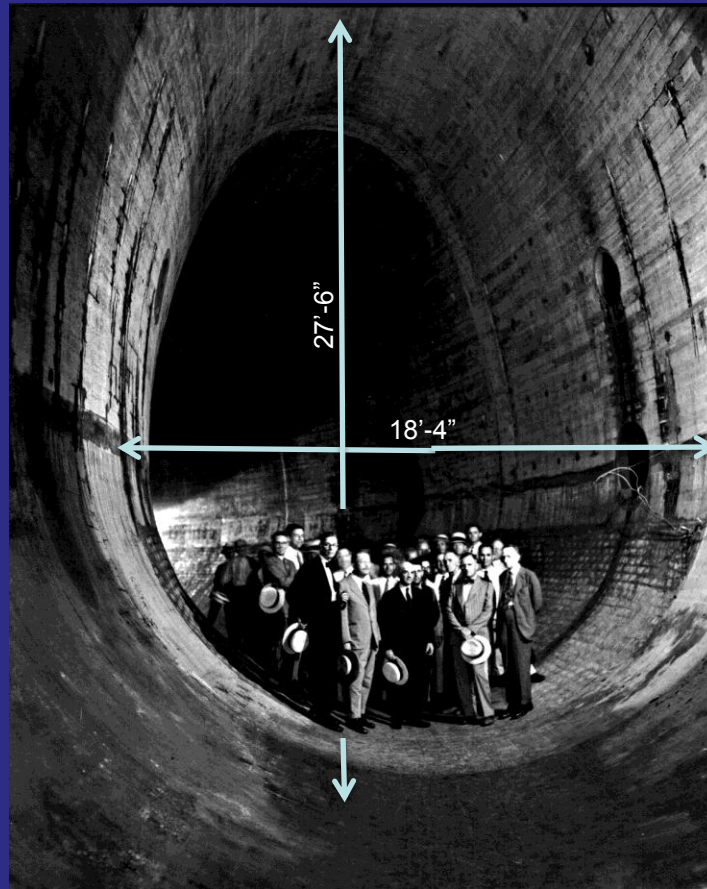


CSO Characteristics

	CSO 015	CSO 191
Upstream area:	7,500 acres	340 acres
Typical Year Overflow Amt.:	495 million gallons	32 million gallons
Typical Year Frequency:	61 events	19 events

Southwestern Outfall Pipe

Can you
show
dimensions of
18 ft 4 in x 27
ft 6 inches?



CAN U adjust line so not going thru oxyvinyl?



ZOOM to PR Flood PS

