



## Appendix 4.5-1 Plumbing Modification Program and Sump Pump Disconnection Program Packet Information



700 West Liberty Street | Louisville, KY 40203-1911  
Phone: 502.540.6000 | LouisvilleMSD.org

Dear Customer:

Thank you for inquiring about MSD's Plumbing Modification Program. MSD initiated this voluntary program in 1993 as a way to reduce basement backups by removing improper connections to the sanitary sewer system. To date, this program has helped more than 17,000 property owners protect their basements from sewer backups, reduced sewer system overflows and improved water quality throughout Metro Louisville. This program is offered to MSD customers at no charge, **provided they meet the criteria for approval and budgeted funds are available.**

This program is available to MSD customers that have experienced a rain-related sewer backup through a basement plumbing fixture or who live in an area with a documented history of wet-weather backups. This does not include:

- Backups through a fixture above the basement level of your home,
- Blockages caused by grease, roots, etc. (Private Property Issue)
- Ground water entering the basement through walls, cracks, floor, etc.

Please read the enclosed information. A complimentary list of licensed plumbing contractors is included. These plumbers are familiar with the program and MSD's specifications and requirements. You may contact any licensed plumber to obtain a bid. The plumbing contractors you select to obtain the required two bids will make the determination on which application best fits with your particular plumbing layout. MSD will select the lowest bid for approval.

Once MSD receives the signed Release and the two plumbers' bids, we will evaluate your eligibility and issue either a letter approving you for the program or a letter explaining why you were denied for the program. The approval letter will approve you for the amount shown on the lowest bid. If approved and as a requirement for receiving payment, you, as the property owner agree to provide safe and unrestricted access to the devices for inspection by MSD. An adult (18+) must be present during the inspection and pets must be on a leash or otherwise restrained. Any issues that would inhibit, impact or compromise the safety of the MSD employee inspecting the installation, must be brought to the attention of the inspector at the time of arrival.

If you have any questions, please contact me via email at [Vikki.huelsman@louisvillemsd.org](mailto:Vikki.huelsman@louisvillemsd.org) or by phone at 540-6984.

Sincerely,

Vikki Huelsman  
Plumbing Modification Program Administrator

Included in this packet:

- Program Information
- Plumbing Modification Program Release
- Frequently Asked Questions
- List of Plumbing Contractors

### **PMP Program Information**

- The device(s) installed will protect your home from sanitary sewer backups through your basement floor drain, sink, toilet, shower drain or washing machine standpipe.
- Existing sump pumps discharging to the sewer system will be disconnected and routed to the outside of your home.
- Any downspouts on your home that are connected to the sewer system will be disconnected to discharge to the surface, provided the disconnection won't result in a safety hazard (i.e. to a walkway or driveway).
- These devices will be owned and maintained by you as the property owner.
- These devices will not impact any issues you may currently be having as a result of surface flooding, groundwater issues or problems with your private connection from your home to the main sewer line.

The following photo's represent the typical devices installed under this program. The downspout photo depicts a typical downspout that would be disconnected.

#### ***Sump photo***



#### ***Sump Discharge on Exterior of House***



*Inside valve photo*



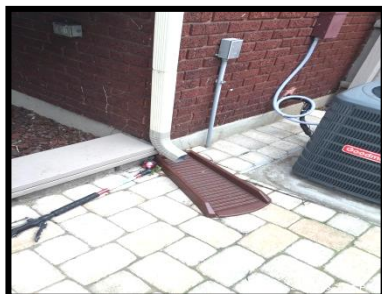
*Washer Valves*



*Outside valve photo*



*Disconnected downspout photo*





## Basement Backflow Prevention Program Checklist

- Please review all the information in this package and keep for future reference.
- Contact two licensed plumbing contractors to obtain bids (see attached list). Please do not share the bid price of one plumber with another. In an effort to be competitive, the plumber may not recommend the most appropriate solution for your situation. Keep a copy of both bids for your records.
- Complete and sign the enclosed Plumbing Modifications Program Release. The form must be signed by both legal owner(s) of the property.
- **Mail the original completed and signed Release form and the two plumbing bids to:**

Plumbing Modification Program  
Metropolitan Sewer District  
P.O. Box 740011  
Louisville, KY. 40201-7411

- MSD will review your eligibility for the Program once the information is received. If approved, you will receive a letter from MSD approving the **dollar amount** shown on the lowest bid. This is the amount MSD will pay for installation of the backflow prevention devices. This approval is valid for **90 days from the date shown on the letter**.
- If it is determined your property is not eligible for the Program, you will receive a letter from MSD explaining the reasons for denial.
- If you would like MSD to email the letter to you please send an email to one of the two contacts shown below with your name and the address of the property included.
- Once you have received the approval letter, contact the plumbing contractor of your choice to schedule the installation. The plumbing contractor is responsible for obtaining all necessary permits. If the backflow prevention device(s) have not been **installed** within the 90-day period, you must reapply for the Program. Prior approval does not guarantee you will be reapproved at a later date.
- After the work is completed, the plumbing contractor will submit the final invoice to MSD for payment.
- Upon receipt of the invoice, a representative of the Plumbing Modification Department will contact you to schedule an inspection. **MSD is required to inspect the installation prior to issuing payment to the plumbing contractor.**
- Once MSD has inspected and approved the installation, MSD will issue payment to the plumbing contractor in the amount shown on the approval letter. **You are responsible for any charges that exceed the approved amount.** Please note that any work required to bring your current plumbing to code or repairs of existing conditions/problems are not covered under the Program. Any costs associated with additional repairs are your responsibility.



## **PLUMBING MODIFICATIONS PROGRAM RELEASE**

This Agreement, requested this \_\_\_\_\_ day of \_\_\_\_\_, 2021

between \_\_\_\_\_  
***Printed Name of Legal Homeowner(s)***

(hereinafter referred to as "Owners"), for their property located at

\_\_\_\_\_, Louisville, Kentucky 402\_\_\_\_,  
***( Property Address for Plumbing Installation )***

and the Louisville and Jefferson County Metropolitan Sewer District (hereinafter referred to as "MSD").

Whereas the Owners have experienced a sewer backup at the property listed above or have an improper connection to the sewer system and MSD does seek to maintain a good relationship with our customers and to assist them in the possible prevention or elimination of sewer backups;

Now, therefore, MSD and the Owners do hereby agree to the following terms:

1. MSD shall pay a maximum of \$4,000.00 for a single family residential property installation of approved backflow prevention devices or disconnection of improper sump pump and downspout connections at the Owners property listed above;
2. Owners agree to the permanent disconnection of any and all downspouts, sump pumps or other surface or groundwater collection devices at the said property from the MSD sewer system as a requirement for receiving payment;
3. Owners agree that said payment is not to be considered as an admission of liability by MSD for any purpose whatsoever;
4. Owners shall provide all utilities necessary for installation, shall have the installation performed in accordance with MSD specifications, shall permit inspection of the installation by MSD and shall assume the operation of and responsibility for all future maintenance of any devices installed. Owners understand that the installations may protrude above the basement floor and may experience groundwater seepage in areas with high groundwater.
5. Owners do hereby release MSD from any and all claims and liability that may occur as a result of the installation of or the failure of Owners to maintain said devices.

The Owner(s) agree to the terms of this agreement and have signed below.

\_\_\_\_\_  
***( Owner's Signature & Date )***

\_\_\_\_\_  
***( Owner's Mailing Address )***

\_\_\_\_\_  
***( Owner's Signature & Date )***

\_\_\_\_\_  
***( Owner's Mailing Address )***

*If you would like for MSD to email future correspondence to you, please provide your email address here:*

\_\_\_\_\_  
***Email Address***





## Frequently Asked Questions

- Q: Once I send the Release and plumbers bids to MSD how long will the review process take?
- A: Currently the review process takes one to two weeks. After periods of heavy rainfall the number of applications increases as does the review time.
- Q: How will the plumber determine whether I need valves, a sump pump or an ejector pump?
- A: The plumbing contractors on the enclosed list are familiar with MSD's specifications and requirements. As master plumbers they will recommend the application that best fits your specific plumbing layout. Please discuss the proposals with your plumber including any modifications to your existing plumbing that may be required at your cost.
- Q: Does MSD pay all the costs associated with the installation of the devices?
- A: MSD will pay the amount shown on the approval letter. This cost includes all materials, labor, and restoration of any disturbed concrete, tile, walls, or restoration of the area around the installation of outside valves. MSD will not pay for work necessary to bring your existing plumbing to code.
- Q: Could I be responsible for any costs associated with the installation?
- A: You would be responsible for any costs that exceed the approved amount shown on the approval letter.
- Q: How long will the installation process take?
- A: All installations are specific to your home. In most cases, the installation takes two days to complete.
- Q: Am I responsible for the long-term maintenance of the devices?
- A: Yes, the homeowner is responsible for any maintenance required on the systems. Routine maintenance is required on the backwater valves. Please refer to the operations and maintenance manual that the MSD inspector will give you at the time of our inspection for information on maintenance requirements.
- Q: Where will these devices be installed?
- A: In most cases the devices, i.e. sump pump, ejector pump or valves, will be installed in the basement of your home. In some cases, valves are installed outside your home at the location of your homes sanitary sewer connection.
- Q: Will the installation of valves under my basement floor impact the stability of the floor?
- A: MSD's engineering evaluation has determined that the installation of the valves does not cause an increase in pressure on walls and floors. With over 15,000 installations over 23 years we have not received a single report of this issue.



700 West Liberty Street | Louisville, KY 40203-1911  
Phone: 502.540.6000 | LouisvilleMSD.org

**PLUMBING MODIFICATION PROGRAM**  
**Complimentary List Only**

*2021 Licensed Plumbing Contractors With Experience In The Program*

Company	Phone	Company	Phone
Venhoff Plumbing	447-4262	Bullseye Plumbing	239-1265
Schott, Schott & Schott	637-5664	Garcia Plumbing	419-7857
Vessels Plumbing	418-5300	Drainbusters Plumbing	812-288-4373
Leanhart Plumbing	935-9898	Tony's Plumbing	451-4085
J.C. Plumbing	778-1344	Springfield Plumbing	487-8281
Ratterman Plumbing	245-5521	Maintenance Management	379-1965
Dial One Plumbing	231-0490	Lee's Plumbing	509-5325
Blackburn & Davis Plumbing	893-5524	Pacific Plumbing	817-8351
Cox Plumbing	231-4562	Jim O'Neil Plumbing	773-972-4561
Keeling Plumbing	634-3630	Jay's Plumbing	449-0492
Thompson Bros. Plumbing	742-7500	John Heffley Plumbing	955-5620
Koppel Plumbing Services	500-7270	KB Plumbing	338-7960
Brother Smith's Plumbing	445-0631	Long's Plumbing	594-1421
Charles Guelda Plumbing	239-3469	Koestel Plumbing	451-3720
Mike Moser Plumbing	773-2173	Great Dane Plumbing	812-697-1491
Davis & Davis Plumbing	957-7606	B.C. Plumbing	634-9725
Tom Sondergeld Plumbing	955-4451	Nick Hooper Plumbing	551-2489
PlumbRight Services	239-4022	Huhn Plumbing	933-2606
Dauenhauer Plumbing	451-2233	Greenwell Plumbing	812-948-9000
John McVey Plumbing	239-5646	Parker Plumbing	239-1163
Roto Rooter of Louisville	583-1550	Professional Plumbing	451-8939
Charlie Sondergeld Plumbing	448-7104	T & S Plumbing	231-7330
Graham's Plumbing	966-8885	Kenneth Thacker Plumbing	277-1039
St. Matthews Plumbing	653-3384	E.J. Willman & Sons	585-4428
Derby City Plumbing	407-9557	Tom Drexler Plumbing	456-5982
Louisville Bluegrass Plumbing	724-6834	Green's Services	408-2041
Jacob Plumbing	419-0782	Brother's Plumbing	239-2880
Deckard Plumbing	812-227-3030	Griffin Plumbing	241-8311
Thoroughbred Plumbing	690-1746	R.L. Plumbing	641-4111
Meyers Plumbing	957-7772	3-D Plumbing	643-1036
Gallahue Plumbing	893-3998	A & S Plumbing	451-4955
CLMS Plumbing	396-8641	ASI Plumbing	271-1331
Ochsner Company	451-1509		

***This list is supplied by MSD as a courtesy only. The homeowner may choose any licensed plumber they wish as long as the plumber is aware of MSD's specifications for the Plumbing Modification Program. If your plumber would like a copy of our plumbing specifications, please have them call (502) 540-6984.***



Q: If there is a problem with the device whom do I contact?

A: You should contact the plumber that installed the device if you have issues or questions.

Q: If part of my current floor covering is removed to perform the installation will MSD pay to replace the floor covering in the entire room?

A: No, MSD will pay for replacing the area that was removed with a similar grade material.

Q: What if my downspouts are connected to the sanitary sewer?

A: MSD strives to keep rainwater out of the sanitary sewer systems. If your downspouts are connected to the sanitary sewer MSD requires that they be disconnected by your plumbing contractor as part of the Program requirements. However, if the disconnection would result in a safety hazard, i.e. releasing water across a walkway or driveway, then MSD would allow those downspouts to remain connected to the sewer.



## Appendix 4.5-1 Downspout Disconnection Program Packet Information



700 West Liberty Street | Louisville, KY 40203-1911  
Phone: 502.540.6000 | [LouisvilleMSD.org](http://LouisvilleMSD.org)

Dear Customer:

Thank you for inquiring about MSD's Downspout Disconnection Program. This program is offered to MSD customers whose homes have their downspouts connected to the sewer system.

One of the biggest problems MSD faces with both the combined and separated sanitary sewer systems in Louisville Metro is improperly connected clean water sources on private property. These connections have a serious impact on the capacity of the system and contribute to sewer overflows.

We invite you, as the property owner, to participate in this voluntary program to remove these improper connections. MSD will pay \$100 for each approved disconnected downspout. MSD does not require the disconnection of any downspouts that would create a safety issue (i.e. discharging to a walkway or driveway, etc.)

Please read the enclosed Downspout Disconnection Incentive Brochure. If you are interested, please give us a call at 540-6000. A MSD Inspector will contact you to schedule an appointment to inform you of the approved downspouts.

If you have any questions, please contact me via email at [Vikki.Huelsman@louisvillemsd.org](mailto:Vikki.Huelsman@louisvillemsd.org) or by phone at (502) 540-6984.

Sincerely,

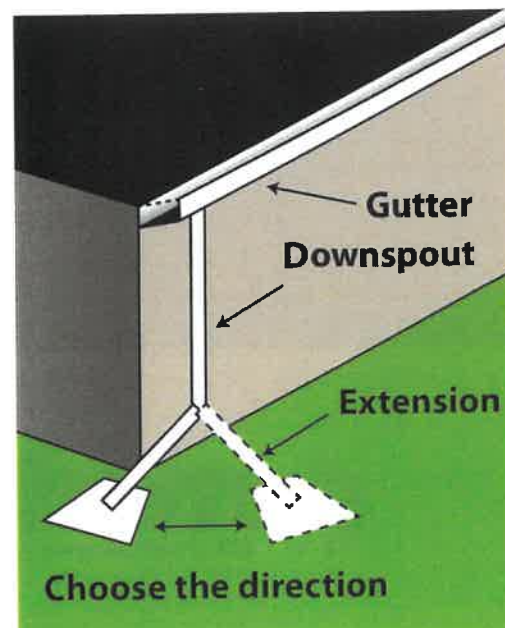
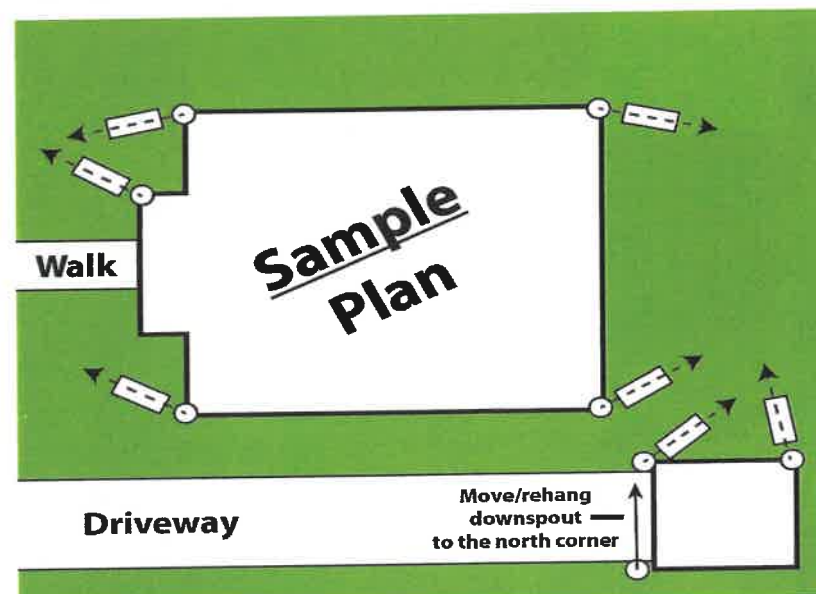
Vikki Huelsman  
Plumbing Modification Services Administrator  
[Vikki.Huelsman@louisvillemsd.org](mailto:Vikki.Huelsman@louisvillemsd.org)  
(502) 540-6984

The following is a step-by-step guide to assist with disconnecting downspouts from the sanitary sewer system.

This is a suggested guide.  
Your situation may vary from what is shown.

### Step 1 Draw a simple plan

Sketch a site plan of your home.  
Mark the locations of downspouts and the direction of flow.



### Step 2 Select the direction for flow of rainwater

You may have more than one option for directing each downspout. Consider any obstacles that may impede the flow of water away from house.

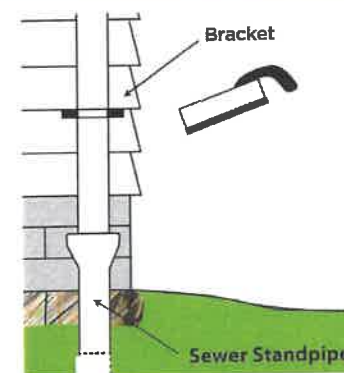
### Step 3 Materials and measurements needed

- Crimpers
- Drill
- Elbow pipe
- Extension pipe (6-foot pipe for a home with a basement, 2-foot pipe for a home with concrete slab or crawl space)
- Hacksaw
- Needle-nose pliers
- Newspaper
- Screw driver or nut driver
- Sheet metal screws/nuts
- Tape measure
- Concrete
- Bracket or strap (optional)
- Splash block (optional)

Measure the cross-section (width and depth) of the existing downspout. There are two standard sizes 3-inch x 2-inch and 4-inch x 3-inch. Some downspouts are attached only to the gutter and sewer standpipe. If this is the case, you may need a bracket or strap to secure the gutter after you disconnect it.

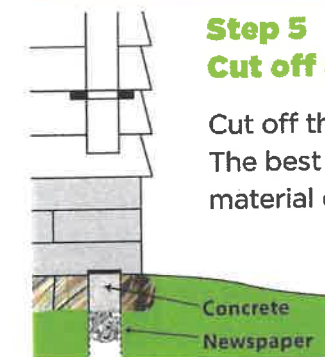
### Step 4 Cut off the downspout

Cut off and remove a portion of the downspout above ground at a height to allow adding an elbow pipe to the downspout.



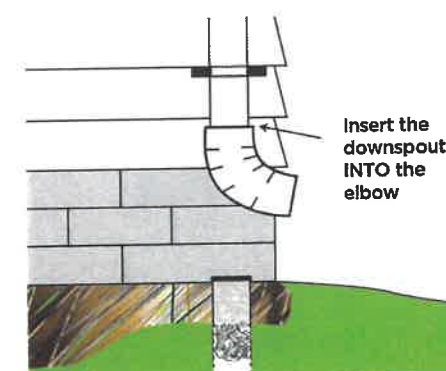
### Step 5 Cut off and plug the standpipe

Cut off the standpipe at ground level or below. The best tool to use for this will depend on the material of the standpipe. Fill the remaining portion of the standpipe with crumbled newspaper and top with concrete to seal the opening.

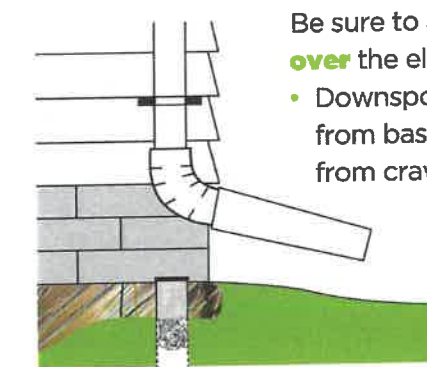


### Step 6 Attach the elbow pipe

Be sure to attach the elbow pipe **over** the downspout pipe. Do not insert the elbow inside the downspout or it will leak. If the elbow does not fit over the downspout, use crimpers or needle-nose pliers to crimp the end of the downspout so that it slides inside the elbow.



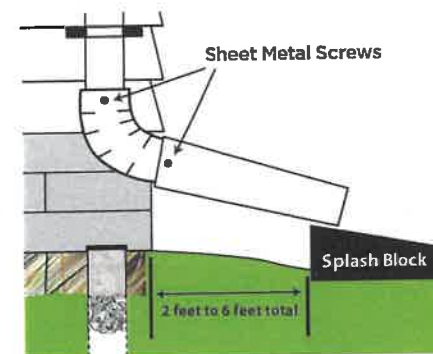
### Step 7 Measure and cut downspout extension pipe



- The end of the downspout should be at least 5 feet from your property line, and possibly more if your yard slopes toward your neighbor's house.

### Step 8 Secure connections and install splash block

Secure pipe connections with screws at each joint where the downspout, elbow and extension connect. It helps to pre-drill holes for screws. Using a splash block at the end of an extension is optional, but it will help prevent soil erosion.



### Step 9 Complete and return the Downspout Disconnection Agreement to MSD

Upon receipt of your agreement, an agent from MSD will contact you to schedule a post-disconnection inspection. Your reimbursement payment will be processed after the agent inspects and approves the downspout disconnection.





MSD strives to keep rainwater out of the sewer system through cost-effective methods like downspout disconnection. Keeping rainwater out of the sewer system helps prevent sewer overflows into our local waterways, and helps avoid sewer backups into homes.

MSD is improving the sanitary sewers in your neighborhood. We need your help disconnecting downspouts in order to fully complete the project. The sewers in your area are part of a separate sewer system. A two-pipe system runs under your neighborhood streets; one pipe for the rainwater and one pipe for the sanitary sewer.

Downspouts that are connected to the sanitary-sewer pipe let rainwater from gutters and downspouts flow directly into the sanitary system. A typical 8-inch neighborhood sanitary-sewer pipe can handle wastewater from approximately 200 homes. This pipe can become overwhelmed when as few as six homes have downspouts that are connected to the sanitary system.

This Downspout Disconnection Project will also help eliminate the need for a sewer overflow storage basin in the area.

MSD offers residential customers  
a one-time incentive of  
**\$100 per downspout**  
for disconnection from the sewer system

### Safety Considerations

**Slope:** Add or remove soil so that water will flow away from structures. Do not disconnect downspouts on slopes with a grade of more than 10 percent.

**Drainage:** Avoid disconnecting downspouts in an area that is too small for proper drainage.

**Extensions:** Downspout extensions and surrounding landscape surface should drain water away from structures. Disconnected downspouts should extend at least 6 feet from a structure with a basement and 2 feet from a crawl space or slab foundation.

**Property Lines:** The end of your downspout extension should be at least 5 feet from your neighbor's property line and 3 feet from the public sidewalk. You may need more space, if your yard slopes toward your neighbor's house or the sidewalk.

**Access:** Avoid disconnecting downspouts or adding downspout extensions across a walkway, patio, driveway or in front of a gate—this can be a tripping hazard.

**Other Hazards:** Do not direct water flow over a septic system, drain-field, or underground oil tank unless they have been decommissioned. Do not disconnect within 10 feet of a retaining wall.

### Other Suggestions

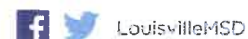
- Install a rain barrel to store rainwater for use on your lawn and garden.
- Create a space to extend a downspout by removing paved surfaces, such as concrete pathways, patios or unused driveway area.
- Replace pavement with pavers or gravel to allow for infiltration.
- Extend downspouts under a deck and direct rainwater to a landscaped area.
- To control erosion, help direct runoff and add visual interest—use splash blocks, rocks, flagstones or boulders at the end of downspouts.
- Incorporate rainwater management systems into your downspout disconnections—a garden, soaking trench or rainwater harvesting system.
- For more information see—[LouisvilleMSD.org/projectwin](http://LouisvilleMSD.org/projectwin).



700 West Liberty Street | Louisville, KY 40203-1911  
[LouisvilleMSD.org](http://LouisvilleMSD.org)

24/7/365

502.587.0603 • [CustomerRelations@LouisvilleMSD.org](mailto:CustomerRelations@LouisvilleMSD.org)



©2013 Louisville and Jefferson County Metropolitan Sewer District. All Rights Reserved.



## Downspout Disconnection Guide





Appendix 4.5-1  
Sewer Line Replacement Program  
Packet Information





700 West Liberty Street | Louisville, KY 40203-1911  
Phone: 502.540.6000 | [LouisvilleMSD.org](http://LouisvilleMSD.org)

Dear Customer:

Thank you for inquiring about MSD's Sanitary Sewer Line Replacement Program (SSLRP). The enclosed brochure explains the details of the program, the eligibility requirements and the payment terms. As noted in the brochure, only single-family residential properties are eligible to participate. The SSLRP is **not** related to any private utility insurance program and no monthly premiums are paid. MSD customers that participate in the Program pay only the interest-free cost of the sewer line replacement in monthly payments over the loan period **after** the new line is installed.

If you decide to participate in the Program, complete the enclosed Agreement for Sanitary Sewer Line Replacement and obtain at least two bids from plumbers shown on the enclosed Master Plumber List. The Agreement must be signed by both property owners (if applicable) and Social Security Numbers need to be included. Mail the signed original Agreement form and the two plumber's bids to the following address:

SSLRP  
MSD Customer Relations Department  
700 W. Liberty Street  
Louisville, KY 40203-1911

Once your application has been approved, you will receive a Promissory Note and Lien document with specifics regarding the loan. The loan amount will be based upon the lowest bid obtained for the replacement. Once the Promissory Note and Lien document has been signed, notarized and returned to MSD, you will be instructed to contact the plumber to schedule the installation. Once the installation is completed, the plumber will forward the invoice to MSD for payment.

If you have any questions, please contact me via email at [Vikki.huelsman@louisvillemsd.org](mailto:Vikki.huelsman@louisvillemsd.org) or by phone at (502) 540-6984.

Sincerely,

Vikki Huelsman  
Plumbing Modification Services Administrator  
[Vikki.Huelsman@louisvillemsd.org](mailto:Vikki.Huelsman@louisvillemsd.org)  
(502) 540-6984



## ABOUT THE PROGRAM

The pipes that take wastewater from your home to the main sewer line are called sewer service lines. These pipes were typically made of clay if your home was built before 1980. Clay service lines can crack and/or separate over time, causing leaks and allowing roots to enter. Even newer service lines can leak if they were improperly installed.

Repairs to these pipes can be costly, and you are responsible for maintaining your sewer service line out to your property line. That's why MSD is happy to introduce the **Sanitary Sewer Line Replacement Program**.

Under this program, you are loaned the cost (up to \$5,000) of replacing your sewer service line with PVC, a much more durable and efficient material. You then have up to three (3) years to repay the loan at zero percent (0%) interest, along with a \$270 fee for administrative costs.

## PROGRAM GUIDELINES

- The program is available only to single-family residential properties.
- Partial sewer line replacements are not eligible. The program applies to total replacement only.
- To be eligible for a loan, customers cannot be delinquent on any MSD billing
- The program can only be used once per property.
- All work will be inspected by MSD and the state plumbing inspector.
- A lien will be placed on the property to secure the MSD loan, therefore the owner of the property will need to sign all agreements.
- Once the loan has been repaid in full, MSD will release the lien on the property.

**NOTE:** The MSD Sanitary Sewer Line Replacement Program is **not** related to any private utility insurance program and no monthly premiums are paid. The MSD customer pays **only the interest-free cost** of the sanitary sewer line replacement in monthly payments over the approved loan period **after** the new sewer line is installed.

This program not only helps you cover the cost of replacing your older service lines, it also works to update and improve our city's entire sewer system.

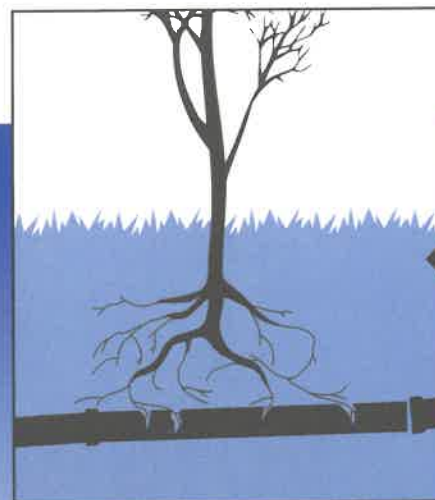
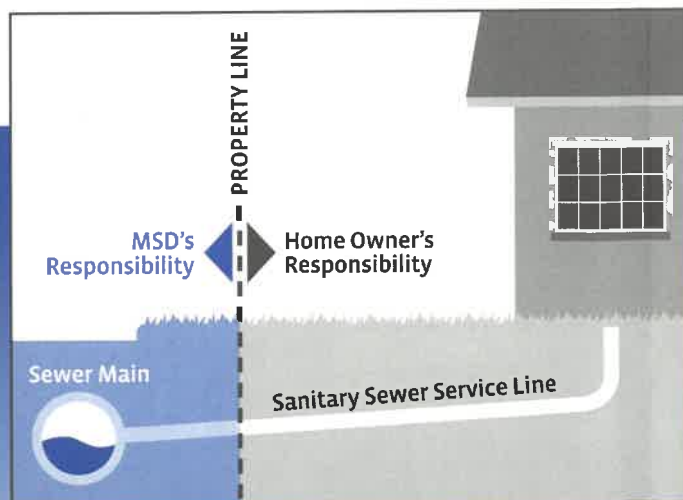
**Call MSD Customer Relations at (502) 587-0603 to have a packet of information mailed to you.**

## PAYMENT TERMS

Payment terms vary depending on the replacement cost as follows:

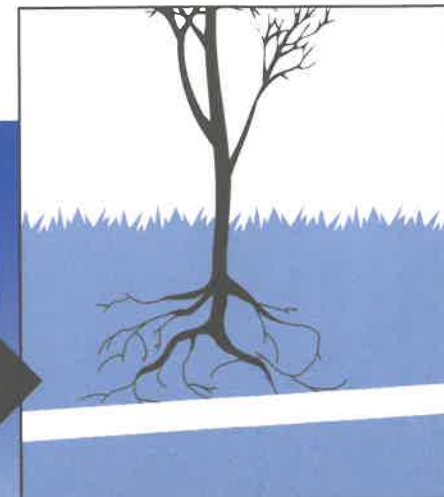
Cost	Term
\$0 – \$1,200	1 Year
\$1,201 – \$2,400	2 Years
\$2,401 – \$5,000	3 Years

The replacement cost will not appear on your water bill. You will receive a monthly bill from MSD approximately 30 days after the plumbing contractor has been paid.



*Clay pipes can crack and/or separate.*

*New PVC pipe is more efficient and durable.*



MSD signed an agreement with the Kentucky State Division of Water and the United States Environmental Protection Agency to address the problem of sewer overflows, as guided by the Federal Clean Water Act. This agreement is known as the Consent Decree.

The Consent Decree is an unfunded federal mandate and its projects are scheduled for completion by the end of 2024. The estimated cost to MSD and our customers is \$850 million.

To address these challenges, MSD has embarked on a comprehensive sewer improvement program called Project WIN, or Waterway Improvements Now. Project WIN's aim is to greatly reduce Louisville Metro's major sources of water pollution through public education and the rehabilitation of our 3,200 mile sewer system – a project that will affect nearly every neighborhood in our city.

Project WIN, once complete, will significantly improve water quality in Louisville Metro by reducing sewer overflows into our creeks and streams.



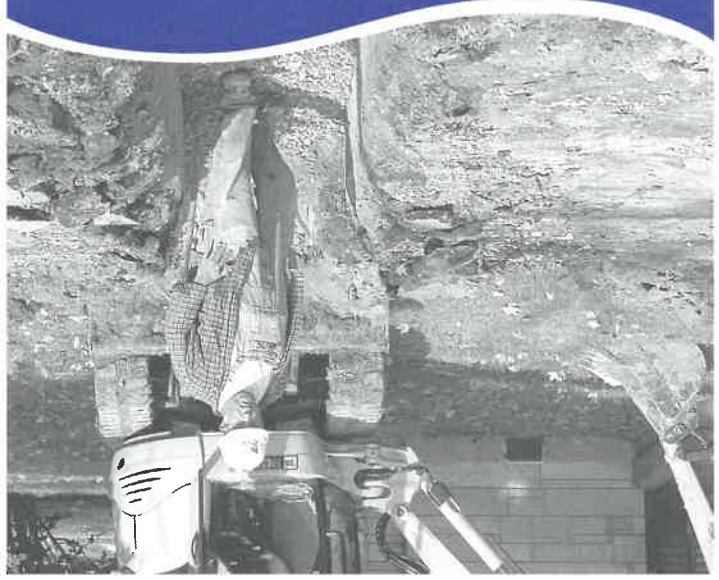
**MSD**  
Metropolitan Sewer District  
700 West Liberty Street  
Louisville, KY 40203-1911

# Sanitary Sewer Line Replacement Program % Financing



**MSD**  
Metropolitan Sewer District  
MSDLOUKY.ORG

Clean, Green, Growing Community





## AGREEMENT FOR SANITARY SEWER LINE REPLACEMENT

This Agreement, requested this \_\_\_\_\_ day of \_\_\_\_\_, 20\_\_\_\_,

between \_\_\_\_\_,  
(Printed Name of Legal Property Owner(s))

the owner(s) of a residence located at \_\_\_\_\_,

Louisville Metro, Kentucky, and the Louisville and Jefferson County Metropolitan Sewer District (hereinafter referred to as "MSD"), a political subdivision created by Kentucky Revised Statutes Chapter 76.

Whereas, the Property Owner(s) aforesaid are in need of replacing their Property Service Connection (PSC), the private sewer line which connects the said property to the MSD main sewer line; and

Whereas, MSD desires to make certain that all PSC's within it's service area are properly constructed and utilize the best available materials to ensure that the risk of blockages resulting in backups to residential properties is minimized; and

Whereas, MSD is willing to provide financial assistance to the Property Owner(s) in their service area who find it necessary to replace the PSC connecting their home to the MSD sewer facilities and will incur replacement costs of less than Five Thousand Dollars (\$5000.00);

NOW, THEREFORE, IT IS AGREED BETWEEN THE PARTIES HERETO AS FOLLOWS:

1. Property Owner(s) shall select at least two (2) plumbers from the Master Plumber List maintained by MSD for the purpose of obtaining bids for the replacement of their PSC, bids which shall be provided to MSD;
2. MSD will loan to the Property Owner(s), at 0% interest, an amount equal to the lowest of the bids received which sum shall be paid directly to the plumber submitting said bid for the replacement of the PSC upon completion, inspection and approval of the replacement.
3. Property Owner(s) shall enter into a Promissory Note and Lien in favor of MSD for repayment of all amounts paid on behalf of the Property Owner(s) for the replacement of their PSC as aforesaid plus an administrative fee of Two Hundred and Seventy Dollars (\$270.00) for all of which amounts Property Owner(s) shall grant a lien against said property to be held by MSD until repayment of all sums in full shall have been made by Property Owner(s);
4. If Property Owner(s) fail, for whatever reason, to enter into the Promissory Note and Lien as stated, MSD shall make no payment nor incur any costs for the replacement of the PSC for the property aforesaid and all such costs shall become the sole responsibility and obligation of the Property Owner(s).

IN TESTIMONY WHEREOF, witness the signatures of the Parties hereto:

\_\_\_\_\_  
(Owner's Signature and Social Security Number)

LOUISVILLE & JEFFERSON  
COUNTY METROPOLITAN  
SEWER DISTRICT

\_\_\_\_\_  
(Owner's Signature and Social Security Number)

AGENT: \_\_\_\_\_





700 West Liberty Street | Louisville, KY 40203-1911  
Phone: 502.540.6000 | LouisvilleMSD.org

## **Sanitary Sewer Line Replacement Program**

### **Master Plumber List**

Adam's Plumbing	(502) 995-4195
Venhoff Plumbing & Heating Co.	(502) 447-4262
Vessels Plumbing, Heating & Cooling	(502) 418-5300
Jarboe's Plumbing, Heating & Cooling	(502) 817-7019
PlumbRight Services	(502) 239-4022
Dauenhauer Plumbing	(502) 451-2233
Dial One Lawrence Lewis Plumbing	(502) 231-0490
Tom Drexler Plumbing	(502) 456-5982
Leanhart Plumbing	(502) 935-9898

(Updated 2/2021)