

POOL Manners

M a t t e r !

"Someone must have drained their swimming pool to the creek again."



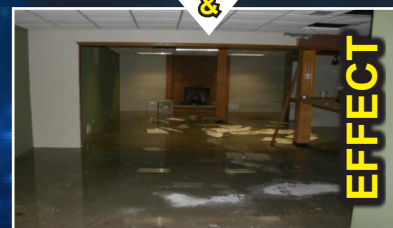
&



Hot pool water full of chemicals will kill fish if drained to a stream or drainage channel.



&



Draining your pool to the sewer too fast will cause **YOUR** basement to backup.

Mind Your Pool MANNERS... When You Drain Your Pool!

- Do not drain your pool during or up to 48 hours after a rain storm.
- Ensure the pH level is between 6 and 8.
- Allow chlorine to drop below 0.5 ppm.
- Drain pool to a grassy area on your property and allow the water to soak into the ground.
- Drain in-ground pool to the sanitary sewer at a maximum flow rate of 30 gallons per minute.



For additional information visit us at www.msdlouky.org or call us at 502-587-0603

